

**MATERIALS**

Patons® Decor™ (3.5 oz/100 g; 208 yds/190 m)
Aran (87602) **1 ball**

Size U.S. 7 (4.5 mm) knitting needles. Set of four size U.S. 7 (4.5 mm) double-pointed knitting needles **or size needed to obtain gauge.**
Cable needle. 3 small button toggles. Stitch holder.

ABBREVIATIONS: www.yarnspirations.com/abbreviations**Alt** = Alternate(ing)**Approx** =

Approximate(ly)

Beg = Beginning

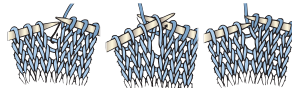
Dec = Decrease(ing)

Inc = Increase(ing)

M1 = Make 1 stitch by picking up horizontal loop lying before next stitch and knitting into back of loop.

M1P = Make 1

stitch by picking up horizontal loop lying before next stitch and purling into back of loop.

**K** = Knit**K2tog** = Knit next 2

stitches together

P = Purl**P2tog** = Purl next 2

stitches together

Rep = Repeat**Rnd** = Round**RS** = Right side**St(s)** = Stitch(es)**WS** = Wrong side**Yo** = Yarn over

INTERMEDIATE

SIZE

To fit 6-8 cup Tea Pot.

GAUGE

20 sts and 26 rows = 4" [10 cm].

SPECIAL TERMS

C6B = Slip next 3 stitches onto cable needle and leave at back of work. K3, then K3 from cable needle.

C6F = Slip next 3 stitches onto cable needle and leave at front of work. K3, then K3 from cable needle.

T5B = Slip next 2 stitches onto a cable needle and leave at back of work. K3, then P2 from cable needle.

T5F = Slip next 3 stitches onto a cable needle and leave at front of work. P2, then K3 from cable needle.

INSTRUCTIONS**BACK**

With pair of needles, cast on 38 sts.

1st row: (RS). P2. *K4. P2. Rep from * to end of row.

2nd row: K2. *P4. K2. Rep from * to end of row.

Rep last 2 rows 4 times more, then rep 1st row once.

Next row: (WS-Inc row). K2. *[P1. M1P. P2. M1P. P1. (M1P. K1) twice] twice. P1. M1P. P2. M1P. P1. K2. Rep from * once more. 58 sts.

Proceed in pat as follows: (See Chart on page 3).

1st row: (RS). P2. [(K6. P4) twice. K6. P2] twice.

2nd row: K2. [(P6. K4) twice. P6. K2] twice.

3rd row: P2. [(C6F. P4) twice. C6F. P2] twice.

4th row: As 2nd row.

5th to 12th rows: As 1st to 4th rows twice more.

13th row: P2. (K3. T5F. P2. K6. P2. T5B. K3. P2) twice.

14th and alt rows: Knit all knit sts and purl all purl sts as they appear.

15th row: P2. [(T5F) twice. K6. (T5B) twice. P2] twice.

17th row: [P4. T5F. (C6F) twice. T5B. P2] twice. P2.

19th row: [P6. (C6B) 3 times. P4] twice. P2.

21st row: [P4. T5B. (C6F) twice. T5F. P2] twice. P2.

23rd row: P2. [(T5B) twice. K6. (T5F) twice. P2] twice.



25th row: P2. (K3. T5B. P2. K6. P2. T5F. K3. P2) twice.

27th to 34th rows: As 1st to 4th rows twice more.

Next row: (RS-Dec row). P2. *[(K2tog. K1) twice. (P2tog) twice] twice. (K2tog. K1) twice. P2. Rep from * once more. 38 sts.

Next row: K2. *P4. K2. Rep from * to end of row. Leave all sts on a st holder.

RIGHT FRONT

With pair of needles, cast on 19 sts.

1st row: (RS). P1 (front edge). (K4. P2) 3 times.

2nd row: (K2. P4) 3 times. K1. Rep last 2 rows 4 times more, then rep 1st row once.

Next row: (WS-Inc row). K2. [P1. M1P. P2. M1P. P1. (M1P. K1) twice] twice. P1. M1P. P2. M1P. P1. K1. 29 sts.

Proceed in pat as follows:

1st row: (RS). P1. (K6. P4) twice. K6. P2.

2nd row: K2. (P6. K4) twice. P6. K1.

3rd row: P1. (C6B. P4) twice. C6B. P2.

4th row: As 2nd row.

5th to 12th rows: As 1st to 4th rows twice more.

13th row: P1. K3. T5F. P2. K6. P2. T5B. K3. P2.

14th and alt rows: Knit all knit sts and purl all purl sts as they appear.

15th row: P1. (T5F) twice. K6. (T5B) twice. P2.

17th row: P3. T5F. (C6F) twice. T5B. P4.

19th row: P5. (C6B) 3 times. P6.

21st row: P3. T5B. (C6F) twice. T5F. P4.

23rd row: P1. (T5B) twice. K6. (T5F) twice. P2.

25th row: P1. K3. T5B. P2. K6. P2. T5F. K3. P2.

27th to 34th rows: As 1st to 4th rows twice more.

Next row: (RS-Dec row). P1. [(K2tog. K1) twice. (P2tog) twice] twice. (K2tog. K1) twice. P2. 19 sts.

Next row: K2. (P4. K2) 2 times. P4. K1. Leave all sts on a st holder.

LEFT FRONT

With pair of needles, cast on 19 sts.

1st row: (RS). (P2. K4) 3 times. P1 (front edge).

2nd row: K1. (P4. K2) 3 times.

Rep last 2 rows 4 times more, then rep 1st row once.

Next row: (WS-Inc row). K1. [P1. M1P. P2. M1P. P1. (M1P. K1) twice] twice. P1. M1P. P2. M1P. P1. K2. 29 sts.

Proceed in pat as follows:

1st row: (RS). P2. (K6. P4) twice. K6. P1.

2nd row: K1. (P6. K4) twice. P6. K2.

3rd row: P2. (C6B. P4) twice. C6B. P1.

4th row: As 2nd row.

5th to 12th rows: As 1st to 4th rows twice more.

13th row: P2. K3. T5F. P2. K6. P2. T5B. K3. P1.

14th and alt rows: Knit all knit sts and purl all purl sts as they appear.

15th row: P2. (T5F) twice. K6. (T5B) twice. P1.

17th row: P4. T5F. (C6F) twice. T5B. P3.

19th row: P6. (C6B) 3 times. P5.

21st row: P4. T5B. (C6F) twice. T5F. P3.

23rd row: P2. (T5B) twice. K6. (T5F) twice. P1.

25th row: P2. K3. T5B. P2. K6. P2. T5F. K3. P1.

27th to 34th rows: As 1st to 4th rows twice more.

Next row: (RS-Dec row). P1. [(K2tog. K1) twice. (P2tog) twice]

twice. (K2tog. K1) twice. P2. 19 sts.

Next row: K2. (P4. K2) twice. P4. K1. Leave all sts on a st holder.

FINISHING

1st row: (RS-Joining row). Rib (K4. P2) across 18 sts from Right Front. P2tog over last st of Right Front and first st of Back. Rib across 36 sts of Back. P2tog over last st of Back and first st of Left Front. Rib across rem 18 sts of Left Front. 74 sts.

2nd row: Knit all knit sts and purl all purl sts as they appear. Rep last row for 1¼" [3 cm]. Cast off in pat.

Place markers 1¼" [3 cm] up from cast on edge and down from joining row at side edges of Back and Fronts.

Sew side seams to markers, leaving openings for spout and handle.

Buttonhole band: 1st row: (RS) Pick up and knit 42 sts up Right Front edge.

2nd row: P2. *K2. P2. Rep from * to end of row.

3rd row: (Rib across 8 sts. yo. Work 2tog) 3 times. Rib to end of row.

4th row: As 2nd row.



5th row: K2. *P2. K2. Rep from * to end of row.

Cast off in ribbing.

Button band: Work as given for Buttonhole band along Left Front edge, omitting all references to buttonholes.

Handle opening edging:

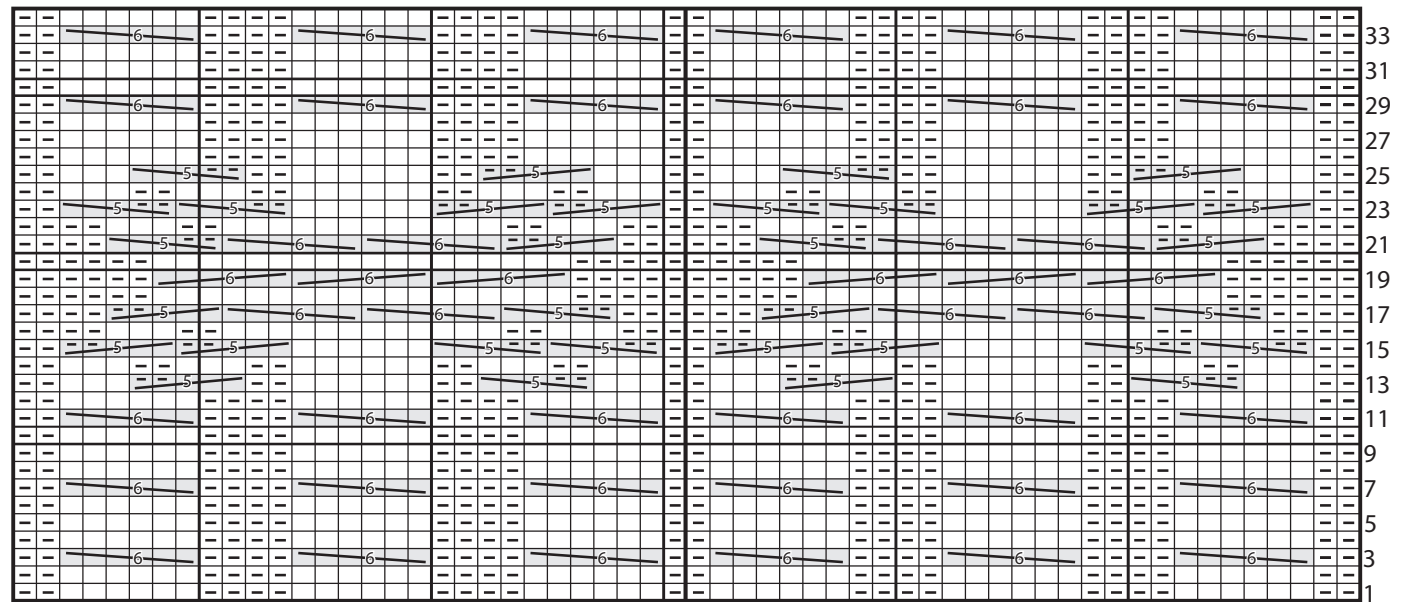
With RS facing and double-pointed needles, pick up and knit 44 sts evenly around handle opening. Divide onto 3 needles (15, 15, 14). Join in rnd, placing marker on first st.

1st rnd: *K2. P2. Rep from * around. Rep last rnd 4 times more.

Rep for spout opening.



CHART



Right Front:
Start here

Back and Left
Front: Start here

KEY

= Knit on RS rows. Purl on WS rows.

= Purl on RS rows. Knit on WS rows.

= T5B

= T5F

= C6B

= C6F