



Patons®
Canadiana

Patons®
DECOR

"BUM" CHAIR CUSHION

MEASUREMENT

Approx 9½ ins [24 cm] square.

MATERIALS

Patons Canadiana (100 g/3.5 oz) or
Patons Décor (100 g/3.5 oz)

Main Color (MC) (Blue) **2 balls**
Contrast A (Orange) **1 ball**

Size 4.5 mm (U.S. 7) knitting needles
or size needed to obtain tension.
Two size 4.5 mm (U.S. 7) double-
pointed needles. Stuffing.

TENSION

20 sts and 26 rows = 4 ins [10 cm] in
stocking st.

INSTRUCTIONS

Pillow Pieces (make 2)

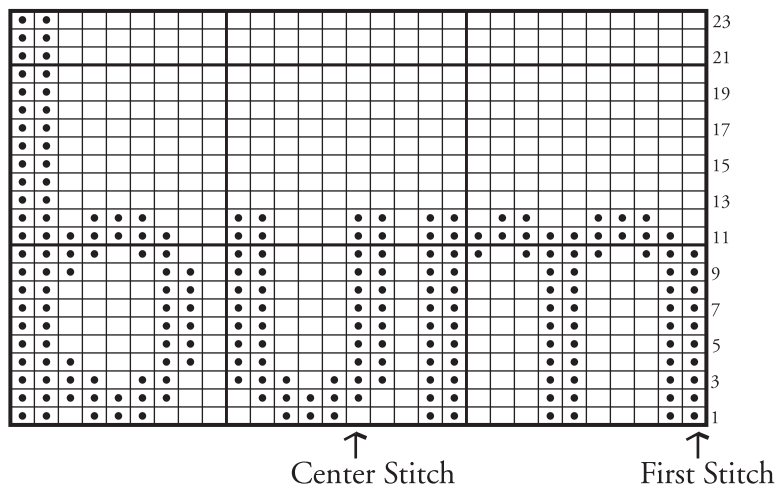
With MC, cast on 47 sts. Proceed in
stocking st for 62 rows. Cast off.

Embroider Chart onto Pillow Top
noting "First st" is placed 21 rows up
from cast on edge, and 9 sts in from
side edge. (First st is 10th st.)

Cord (make 2): With MC and
2 double pointed needles cast on 3 sts.
K3. *Slide sts to other end of needle
without turning work. K3. Rep from
* until cord measures 12 ins
[30.5 cm]. Cast off.

Sew 3 seams of pillow tog, attaching
1 cord at each back corner for ties.
Stuff lightly. Sew seam closed.

CHART



Key

□ = MC

● = Duplicate st with A



ABBREVIATIONS: www.patonsyarns.com/glossary

Patons®

... a part of your life.

P.O. Box 40, Listowel ON N4W 3H3