



Christmas Cables Pillow



INTERMEDIATE

MEASUREMENTS

Approx 16" [40.5 cm] square.

GAUGE

19 sts and 25 rows = 4" [10 cm]
in stocking st.

MATERIALS

Patons® Canadiana™ (3.5 oz/100 g; 205 yds/187 m)

Crantini (10522)

3 balls

Size U.S. 8 (5 mm) knitting needles **or size needed to obtain gauge.** Cable needle. 16" [40 cm] square pillow form.

ABBREVIATIONS: www.yarnspirations.com/abbreviations

Alt = Alternate(ing)

Approx = Approximately

Beg = Beginning

C2F = Slip next stitch onto cable needle and leave at front of work. K1, then K1 from cable needle.

C2B = Slip next stitch onto cable needle and leave at back of work. K1, then K1 from cable needle.

C6B = Slip next 3 stitches onto cable needle and leave at back of work. K3, then K3 from cable needle.

C6F = Slip next 3 stitches onto cable needle and leave at front of work. K3, then K3 from cable needle.

K = Knit

P = Purl

Pat = Pattern

Rep = Repeat(s)

Rem = Remaining

RS = Right Side

St(s) = Stitch(es)

INSTRUCTIONS

Cast on 97 sts.

1st row: (RS). P1. K1. P1. C2B. C2F. P1. K1. P1. (K12. P1) 6 times. K1. P1. C2B. C2F. P1. K1. P1.

2nd and alt rows: K1. P1. K1. P4. K1. P1. K1. (P12. K1) 6 times. P1. K1. P4. K1. P1. K1.

3rd row: P1. K1. P1. C2F. C2B. P1. K1. P1. (C6B. C6F. P1) 6 times. K1. P1. C2F. C2B. P1. K1. P1.

5th row: As 1st row.

7th row: P1. K1. P1. C2F. C2B. P1. K1. P1. (K12. P1) 6 times. K1. P1. C2F. C2B. P1. K1. P1.

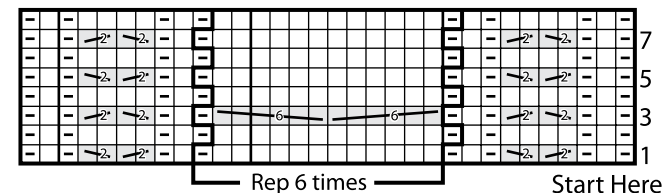
8th row: As 2nd row.

These 8 rows form pat.

Rep last 8 rows until work from beg measures approx 32" [81.5 cm], ending on 8th row. Cast off.

Sew 2 sides. Insert pillow form. Sew rem side closed.

Chart



Key

□ = Knit on RS rows. Purl on WS rows.

◻ = Purl on RS rows. Knit on WS rows.

◻ = C2B

◻ = C2F

◻ = C6B

◻ = C6F