



KNIT | SKILL LEVEL: **INTERMEDIATE**

ABBREVIATIONS

Alt = Alternat(ing).

Approx = Approximately.

Beg = Beginning.

C3F = Slip next 2 stitches onto cable needle and leave at front of work. K1, then K2 from cable needle.

C4B = Slip next 2 stitches onto cable needle and leave at back of work. K2, then K2 from cable needle.

C4F = Slip next 2 stitches onto cable needle and leave at front of work. K2, then K2 from cable needle.

Cont = Continue(ity).

Dec = Decrease(ing).

Inc = Increase 1 stitch by knitting into front and back of next stitch.

K = Knit.

P = Purl.

Pat = Pattern.

Rep = Repeat.

RS = Right side.

St(s) = Stitch(es).

T3B = Slip next stitch onto cable needle and leave at back of work. K2, then P1 from cable needle.

T3F = Slip next 2 stitches onto cable needle and leave at front of work. P1, then K2 from cable needle.

Tog = Together.

WS = Wrong side.

MEASUREMENTS

Approx 44" x 58" [112 x 147.5 cm].

GAUGE

11 sts and 16 rows = 4" [10 cm] in stocking stitch with 2 strands tog.

INSTRUCTIONS

Panel Pat (worked over 25 sts).

1st row: P2. T3B. T3F. (K1. P1) twice. T3B. C3F. P4. T3B.

2nd and alt rows: Knit all knit sts and purl all purl sts as they appear.

MATERIALS

Patons® Canadiana™ (3.5 oz/100 g; 205 yds/187 m)

Med. Teal (10744)

13 balls

Size U.S. 11 (8 mm) circular knitting needle 32" [81.5 cm] long **or size needed to obtain tension.** Cable needle.

3rd row: P1. T3B. P2. T3F. K1. P1. T3B. K1. P1. C3F. P2. T3B. P1.
5th row: T3B. P4. T3F. T3B. (K1. P1) twice. C3F. T3B. P2.
7th row: K2. P6. C4B. (K1. P1) 3 times. C4B. P3.
9th row: T3F. P4. T3B. C3F. (K1. P1) twice. T3B. T3F. P2.
11th row: P1. T3F. P2. T3B. K1. P1. C3F. K1. P1. T3B. P2. T3F. P1.
13th row: P2. T3F. T3B. (K1. P1) twice. C3F. T3B. P4. T3F.
15th row: P3. C4F. (K1. P1) 3 times. C4F. P6. K2.
 Last 16 rows form Panel Pat.

AFGHAN

Note: Afghan is worked with 2 strands of yarn tog throughout. With 2 strands of yarn tog, cast on 119 sts.

1st row: (RS). K1. *P1. K1. Rep from * to end of row.

2nd row: P1. *K1. P1. Rep from * to end of row.

3rd row: As 2nd row.

4th row: As 1st row.

Last 4 rows form Moss St Pat. Rep last 4 rows 3 times more, inc 12 sts evenly across last row. 131 sts.

Proceed as follows:

1st row: (RS). K1. (P1. K1) 5 times. P2. *Work 1st row of Panel Pat over

next 25 sts. P2. K1. (P1. K1) 5 times. P2. Rep from * once more. Work 1st row of Panel Pat over next 25 sts. P2. K1. (P1. K1) 5 times.

2nd row: P1. (K1. P1) 5 times. K2. *Work 2nd row of Panel Pat over next 25 sts. K2. P1. (K1. P1) 5 times. K2. Rep from * once more. Work 2nd row of Panel Pat over next 25 sts. K2. P1. (K1. P1) 5 times.

3rd row: P1. (K1. P1) 5 times. K2. *Work 3rd row of Panel Pat over next 25 sts. K2. P1. (K1. P1) 5 times. K2. Rep from * once more. Work 3rd row of Panel Pat over next 25 sts. K2. P1. (K1. P1) 5 times.

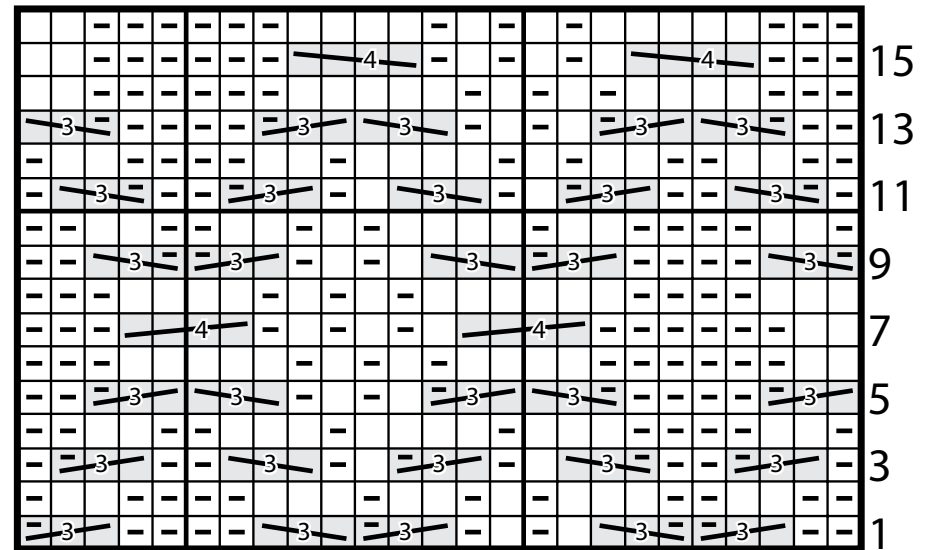
4th row: K1. (P1. K1) 5 times. P2. *Work 4th row of Panel Pat over next 25 sts. P2. K1. (P1. K1) 5 times. P2. Rep from * once more. Work 4th row of Panel Pat over next 25 sts. P2. K1. (P1. K1) 5 times.

Panel Pat is now in position. Last 4 rows form Moss St Pat at sides and between Panels.

Cont in pat until work from beg measures approx 56" [142 cm], ending with 16th row of Panel Pat and dec 12 sts evenly across last row. 119 sts.

Work 16 rows in Moss St Pat. Cast off in pat.

CHART I



Start Here

Key

- Knit on RS rows. Purl on WS rows.
- Purl on RS rows. Knit on WS rows.

 C3F

 T3B

 T3F

 C4B

 C4F