

Patons
Classic Wool

Patons
DECOR



NORTHERN MOTIFS AFGHAN AND PILLOW

MEASUREMENTS

AFGHAN: Approx 47 x 57 ins
[119.5 x 134.5 cm]

PILLOW: Approx 16 ins [41 cm]
square

MATERIALS

Patons Classic Wool (100 g/3.5 oz)
or **Patons Decor** (100 g/3.5 oz)

AFGHAN

Main color (MC) 4 balls
Contrast A 8 balls
Contrast B 2 balls

REINDEER PILLOW

Main color (MC) 2 balls

Contrast A 1 ball

SNOWFLAKE PILLOW

Main color (MC) 2 balls

Contrast A 1 ball

Size 4.5 mm (U.S. 7) knitting needles. Size 4.5 mm (U.S. 7) circular knitting needle 90 cm long for Afghan **or size needed to obtain tension.** Cable needle for Afghan. 16 ins [41 cm] square pillow form for Pillow.

TENSION

20 sts and 26 rows = 4 ins [10 cm]
in stocking st.

ABBREVIATIONS

C4B = slip next 2 sts onto a cable needle and leave at back of work. K2, then K2 from cable needle.

T3B = slip next st onto a cable needle and leave at back of work. K2, then P1 from cable needle.

T3F = slip next 2 sts onto a cable needle and leave at front of work. P1, then K2 from cable needle.

INSTRUCTIONS

Note: When working from Charts, carry yarn not in use loosely across wrong side of work but never over more than 5 sts. When it must pass over more than 5 sts, weave it over and under color in use on next st or at centre point of sts it passes over. The colors are never twisted around one another. Read all **knit** rows from **right** to left and **purl** rows from **left** to right.

STRIP A

With MC, cast on 23 sts.

**With MC, work Chart I to end of chart reading RS rows from right to left and wrong side rows from left to right. .

With A as Color 1 and B as Color 2, work Chart II to end of chart.

.With MC as Color 1 and A as Color 2, work Chart III to end of chart.

.With A, work Chart I to end of chart. With B as Color 1 and A as Color 2, work Chart II to end of chart.**

With A as Color 1 and MC as Color 2, work Chart III to end of chart.

Rep from ** to ** once more. With B, cast off.

STRIP B

With A, cast on 23 sts.

**With A as Color 1 and B as Color 2, work Chart II to end of chart.

With MC as Color 1 and A as Color 2, work Chart III to end of chart.

With A, work Chart I to end of chart.

With B as Color 1 and A as Color 2, work Chart II to end of chart .

With A as Color 1 and MC as Color 2, work Chart III to end of chart.**

With MC, work Chart I to end of chart. Rep from ** to ** once more. With A, cast off.

STRIP C

With MC, cast on 23 sts.

**With MC as Color 1 and A as Color 2, work Chart III to end of chart.

With A, work Chart I to end of chart.

With B as Color 1 and A as Color 2, work Chart II to end of chart.

With A as Color 1 and MC as Color 2, work Chart III to end of chart.



ABRÉVIATIONS: www.patonsyarns.com/glossary

With MC, work Chart I to end of chart.**

With A as Color 1 and B as Color 2, work Chart II to end of chart.

Rep from ** to ** once more. With MC, cast off.

STRIP D

With A, cast on 23 sts.

**With A, work Chart IV to end of chart.

With B as Color 1 and A as Color 2, work Chart II to end of chart.

With A as Color 1 and MC as Color 2, work Chart III to end of chart.

With MC, work Chart I to end of chart.

With A as Color 1 and B as Color 2, work Chart II to end of chart.**

With MC as Color 1 and A as Color 2, work Chart III to end of chart.

Rep from ** to ** once more. With A, cast off.

STRIP E

With B, cast on 23 sts.

**With B as Color 1 and A as Color 2, work Chart II to end of chart.

With A as Color 1 and MC as Color 2, work Chart III to end of chart.

With MC, work Chart I to end of chart.

With A as Color 1 and B as Color 2, work Chart II to end of chart.

With MC as Color 1 and A as Color 2, work Chart III to end of chart.**

With A, work Chart I to end of chart.

Rep from ** to ** once more. With MC, cast off.

STRIP F

With A, cast on 23 sts.

**With A as Color 1 and MC as Color 2, work Chart III to end of chart.

With MC, work Chart I to end of chart.

With A as Color 1 and B as Color 2, work Chart II to end of chart.

With MC as Color 1 and A as Color 2, work Chart III to end of chart.

With A, work Chart I to end of chart.**

With B as Color 1 and A as Color 2, work Chart II to end of chart.

Rep from ** to ** once more. With A, cast off.

CABLE PANEL (make 5)

With A, cast on 22 sts

1st row: (RS). P3. K2. P4. K4. P4. K2. P3.

2nd and alt rows: Knit all knit sts and purl all purl sts as they appear.

3rd row: P3. K2. P4. C4B. P4. K2. P3.

5th row: P3. (T3F. P2. T3B) twice. P3.

7th row: P4. T3F. T3B. P2. T3F. T3B. P4.

9th row: P5. C4B. P4. C4B. P5.

11th row: P5. K4. P4. K4. P5.

13th row: As 9th row.

15th row: P4. (T3B. T3F. P2.) twice. P2.

17th row: P3. (T3B. P2. T3F) twice. P3.

19th row: As 3rd row.

20th row: As 2nd row.

These 20 rows form pat.

Cont in pat until work from beg measures same length as any Strip (when slightly stretched) ending with RS facing for next row. Cast off.

Sew tog in the following sequence:

Strip A, Cable Panel, Strip B, Cable Panel, Strip C, Cable Panel, Strip D, Cable Panel, Strip E, Cable Panel, Strip F.

Side Edging: With right side of work facing, MC and circular needle, pick up and knit 271 sts along each side edge.

1st row: (Wrong side). K1. *P1. K1. Rep from * to end of row.

Rep last row for seed st pat 6 times more. Cast off in pat.

Top and Lower Edging: With right side of work facing, MC and circular needle, pick up and knit 241 sts across top or lower edge. Work 7 rows in seed st pat as given for Side Edging. Cast off in pat.

PILLOWS

Note: When working from chart, wind small balls of the colors to be used, one for each separate area of color in the design. Start new colors at appropriate points. To change colors, twist the two colors around each other where they meet, on WS, to avoid a hole.

REINDEER PILLOW

FRONT

With MC, cast on 81 sts.

Work 14 rows stocking st.

Place Chart IV: Next row: With MC, K8. Work 1st row of Chart IV across next 64 sts, reading row from **right** to left. With MC, knit to end of row.

Next row: With MC, P9. Work 2nd row of Chart IV across next 65 sts, reading row from **left** to right. With MC, purl to end of row.

Chart IV is now in position.

Cont working Chart IV to end of chart.

With MC, work 15 rows stocking st. Cast off.

BACK

With MC, cast on 81 sts.

Work 102 rows stocking st. Cast off.

SNOWFLAKE PILLOW

FRONT

With MC, cast on 81 sts.

Work 20 rows stocking st.

Place Chart V: **Next row:** With MC, K11. Work 1st row of Chart V across next 59 sts, reading row from **right** to left. With MC, knit to end of row.

Next row: With MC, P11. Work 2nd row of Chart V across next 59 sts, reading row from **left** to right. With MC, purl to end of row.

Chart V is now in position.

Cont working Chart V to end of chart.

With MC, work 19 rows stocking st. Cast off.

BACK

Work as given for Back of Reindeer Pillow.

BOTH VERSIONS

FINISHING


Sew Front and Back tog leaving one side open to insert pillow form. Insert pillow form. Sew opening closed.


Sew one tassel to each corner.

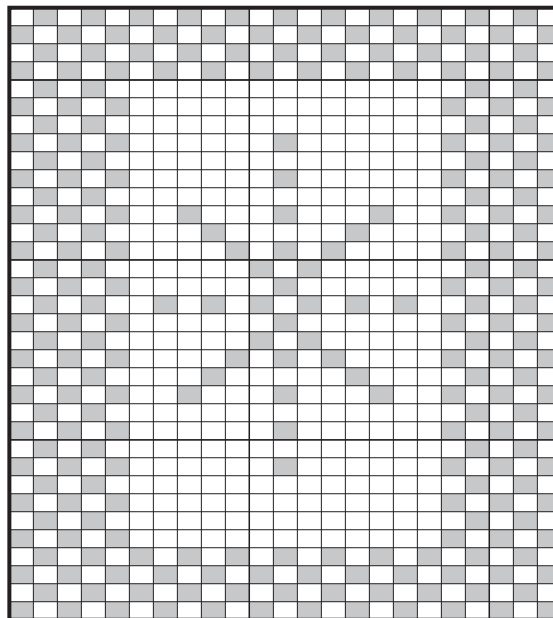
Make Tassel: Cut a piece of cardboard 5½ ins [14 cm] wide. Wind A around cardboard 35 times. Break yarn leaving a long end and thread end through a needle. Slip needle through all loops and tie tightly. Remove cardboard and wind yarn tightly around loops ¾ inch [2 cm] below fold. Fasten securely. Cut through rem loops and trim ends evenly.

Chart I

Key for Chart I

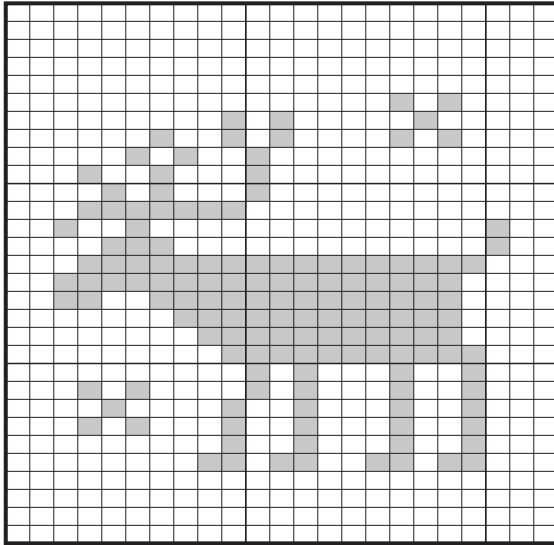
 = Purl on right side rows.
Knit on wrong side rows.

 = Knit on right side rows.
Purl on wrong side rows.



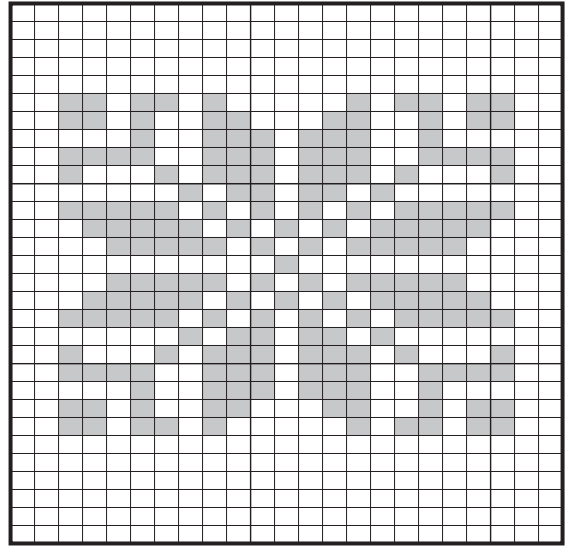
Start Here

Chart II



Start Here

Chart III



Start Here

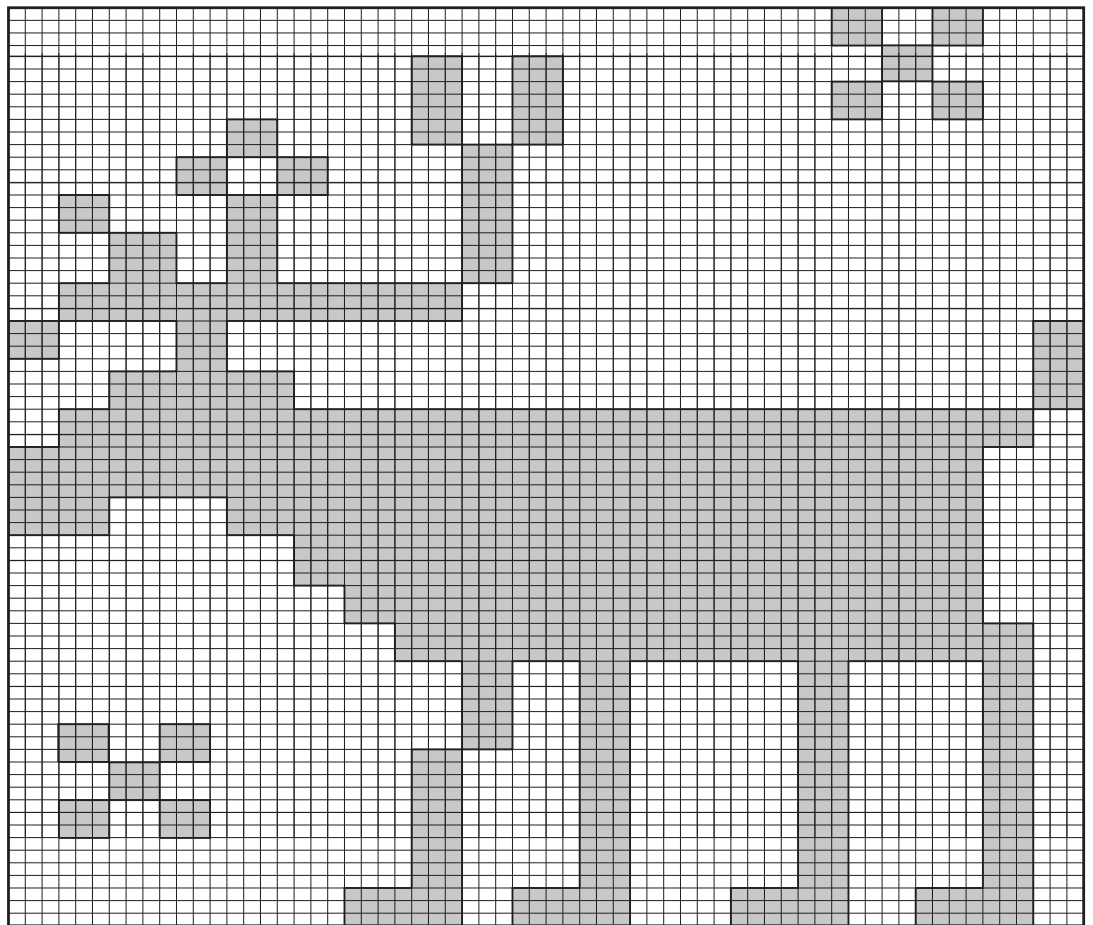
Key for Chart II and III

Key

□ = Color 1

■ = Color 2

Chart IV

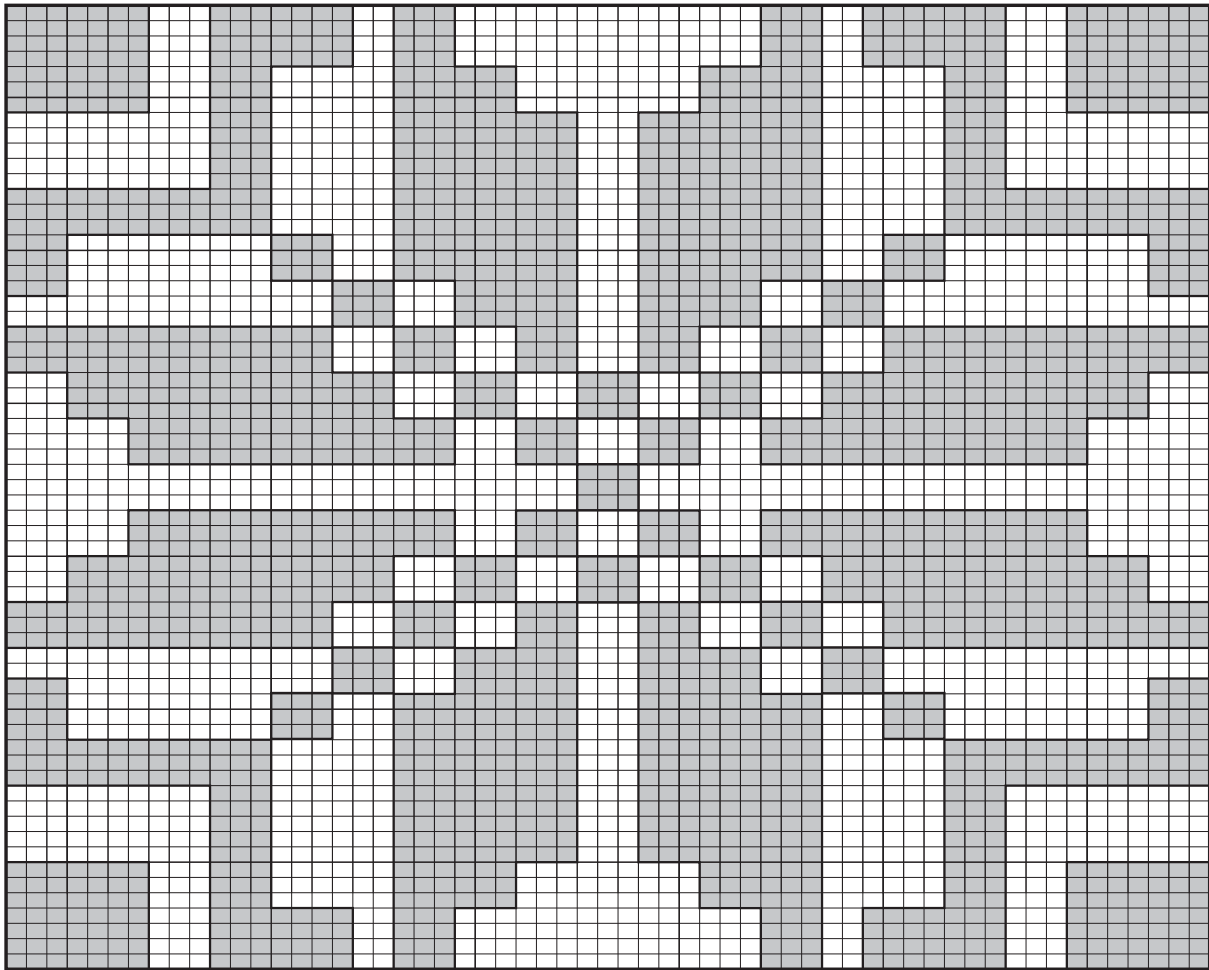


Key for Chart IV

□ = MC

■ = Contrast A

CHART V



Key for Chart V

□ = MC

■ = Contrast A

 **Patons**

... a part of your life.

P.O. Box 40, Listowel ON N4W 3H3