



KNIT | SKILL LEVEL: INTERMEDIATE

ABBREVIATIONS

Alt = Alternate(ing)
Approx = Approximately
Beg = Beginning
Cont = Continue(ity)
Dec(s) = Decrease(ing)
Inc = Increase 1 stitch by knitting into front and back of next stitch

Pat = Pattern
Rep = Repeat.
Rnd(s) = Round(s)
RS = Right side.
St(s) = Stitch(es)
Tog = Together
WS = Wrong side

MEASUREMENTS

Blanket: Approx 54 x 64" [137 x 162.5 cm]

Pillow: Approx 20" [51 cm] square.

GAUGE

20 sts and 26 rows = 4" [10 cm] in stocking st.

INSTRUCTIONS

BLANKET

Lower Edge Facing: With A, cast on 201 sts. **Do not** join in rnd. Working back and forth across needle in rows, beg with a knit row, work in stocking st, inc 1 st each end of 3rd and every following alt row 4 times more, then on every following 4th row 7 times more. 225 sts.

Work 2 rows even.

Next row: (WS). (Fold line). Knit.

Work Chart I in stocking st to end of chart, *reading knit rows from right to left and purl rows from left to right*, noting 20-st rep will be worked 10 times and side decs on 5th and every following 4th row 7 times more, then on every following alt row 4 times more. 201 sts.

Chart I is shown on page 3.

Next row: (WS). With MC, purl, dec 8 sts evenly across. 193 sts.

Next 2 rows: Knit. Place markers at each end of last row.

MATERIALS

Patons® Canadiana™ (3.5 oz/100 g; 205 yds/187 m)

	Blanket	Pillow	
Main Color (MC) Teal Heather (10747)	9	3	balls
Contrast A Rich Brown (10749)	5	1	ball(s)
Contrast B Toasty Gray (10012)	2	1	ball(s)
Contrast C Med. Teal (10744)	1	1	ball

Blanket: Size U.S. 7 (4.5 mm) circular knitting needle 36" [90 cm] long **or size needed to obtain gauge.**

Pillow: Size U.S. 7 (4.5 mm) knitting needles **or size needed to obtain gauge.** 20" [51 cm] square pillow form.

Work Chart II to end of chart, *reading RS rows from **right** to left and WS rows from **left** to right*, noting 16-st rep will be worked 12 times.

Last 34 rows of Chart II form Texture Pat.

Chart II is shown on page 3.

Cont in Texture Pat until work from markers measures approx 48" [122 cm], ending on a 34th row of Texture Pat.

Next row: (RS). Purl, inc 8 sts evenly across. 201 sts.

Next row: Knit.

Work Chart III in stocking st to end of chart, *reading **knit** rows from **right** to left and **purl** rows from **left** to right*, noting 20-st rep will be worked 10 times and side incs on 3rd and every following alt row 4 times more, then on every following 4th row 7 times more. 225 sts.

Chart III is shown on page 3.

Upper Edge Facing: Next row: (WS) (Fold line). With A, knit.

With A, cont in stocking st, dec 1 st each end of 5th and every following 4th row 7 times more, then on every following alt row 4 times more. 201 sts. Work 1 row even. Cast off.

Side Edging: With RS facing and MC, pick up and knit 241 sts evenly along side edge of Blanket. Change to A and work Chart III in stocking st to end of chart, noting 20-st rep will be worked 12 times and side incs on 3rd and every following alt row 4 times more, then on every following 4th row 7 times more. 265 sts.

Next row: Knit.

Side Edge Facing: Next row: (WS). (Fold line). With A, knit.

With A, cont in stocking st, dec 1 st each end of 5th and every following 4th row 7 times more, then on every following alt row 4 times more. 241 sts. Work 3 rows even. Cast off.

FINISHING

Sew corners of edgings. Fold facings to WS along fold lines and sew in position.

PILLOW FRONT

With A, cast on 77 sts.

Work Chart IV in stocking st to end of chart, *reading **knit** rows from **right** to left and purl rows from **left** to right*, noting 20-st rep will be worked 3 times and side decs on 3rd and every following alt row 7 times more. 61 sts.

Chart IV is shown on page 4.

Next row: (RS). With MC, knit, inc 4 sts evenly across. 65 sts.

Next row: Knit. Place markers at each end of last row.

Work Chart II to end of chart, *reading **RS** rows from **right** to left and **WS** rows from **left** to right*, noting 16-st rep will be worked 4 times.

Last 34 rows of Chart II form Texture Pat.

Chart II is shown on page 4.

Cont in Texture Pat until work from markers measures approx 12" [30.5 cm], ending on a 34th row of Texture Pat.

Next row: (RS). Purl, dec 4 sts evenly across. 61 sts.

Next row: Purl.

Work Chart V in stocking st to end of chart, *reading **knit** rows from **right** to left and purl rows from **left** to right*, noting 20-st rep will be worked 3 times and side incs on 3rd and every following alt row 7 times more. 77 sts. Cast off.

Chart V is shown on page 4.

Side Edging: With RS of work facing and MC, pick up and knit 61 sts evenly along side edge of Pillow.

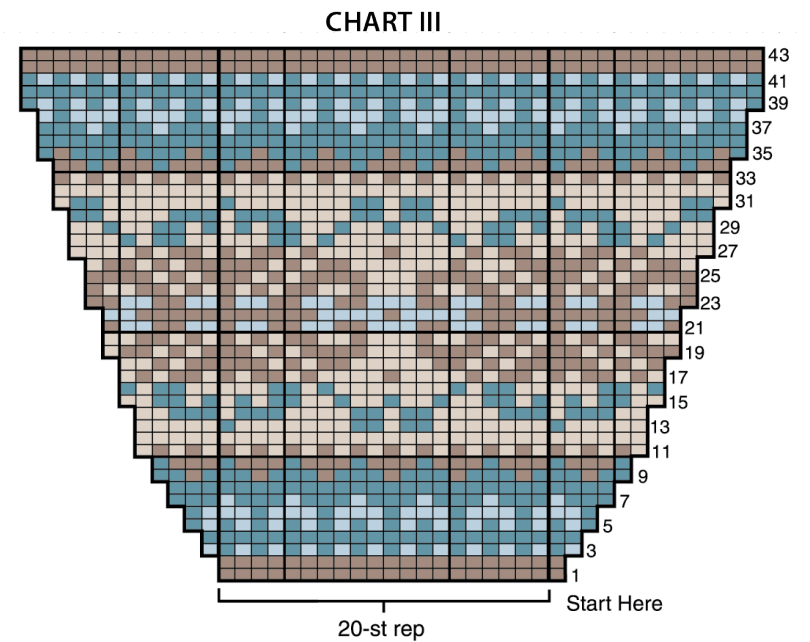
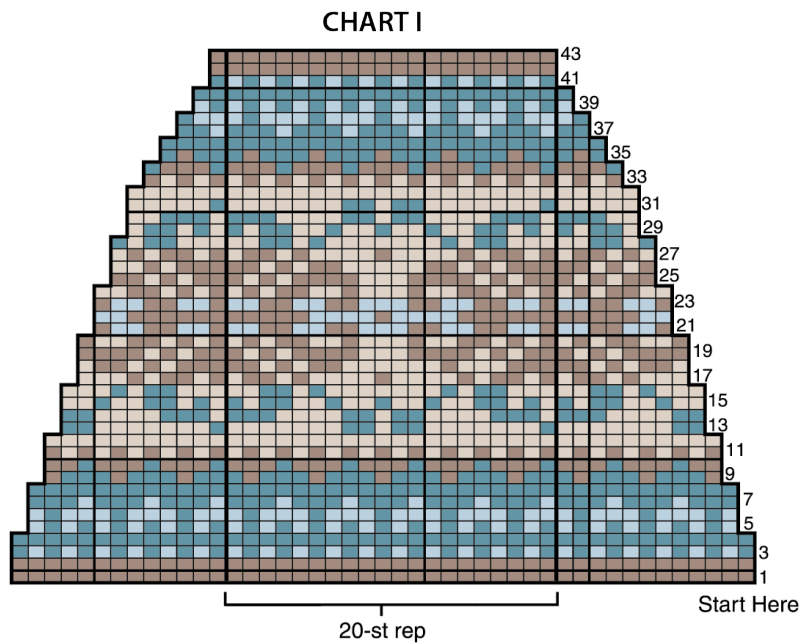
Change to A and work Chart V in stocking st to end of chart, noting 20-st rep will be worked 3 times and side incs on 3rd and every following alt row 7 times more. 77 sts. Cast off. Rep for opposite side.

BACK

With MC, cast on 94 sts. Work in stocking st until piece measures 20" [51 cm], ending with a purl row. Cast off.

FINISHING

Sew corners of edgings. Sew 3 sides of Pillow tog. Insert pillow form. Sew rem side closed.



Key





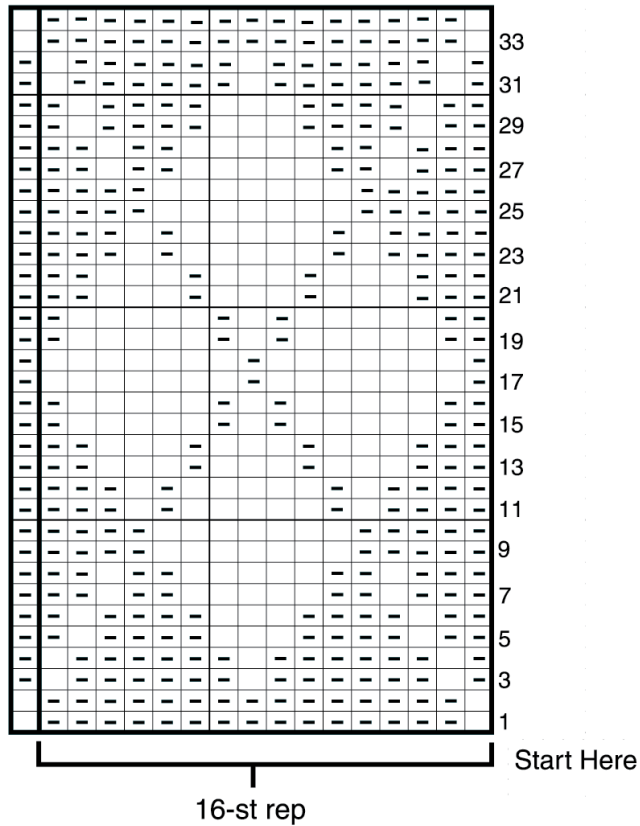
-  = Main color (MC)
-  = Contrast A
-  = Contrast B
-  = Contrast C

CHART II



Key

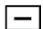
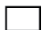
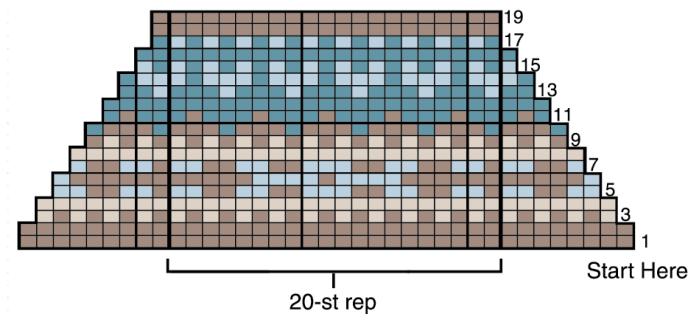
-  = With MC, purl on RS, knit on WS.
-  = With MC, knit on RS, purl on WS.

CHART IV



Key

-  = Main color (MC)
-  = Contrast A
-  = Contrast B
-  = Contrast C

CHART V

