

 **Patons**
Canadiana

 **Patons**
DECOR



NORDIC LAP BLANKET

MEASUREMENT

Approx 41½ x 53 ins [106 x 134.5 cm]

MATERIALS

Patons Canadiana (100 g/3.5 oz)
or **Patons Décor** (100 g/3.5 oz)

Main Color (MC) (Black) 6 balls
Contrast A (Aran) 3 balls
Contrast B (Red) 2 balls
Contrast C (Purple) 1 ball

Sizes 4.5 mm (U.S. 7) and 5 mm (U.S. 8) circular knitting needles 36 ins [90 cm] long or size needed to obtain tension.

TENSION

20 sts and 26 rows = 4 ins [10 cm]
with smaller needle in stocking st.

INSTRUCTIONS

Note: *When working from charts, carry yarn not in use loosely across WS of work but never over more than 5 sts. When it must pass over more than 5 sts, weave it over and under color in use on next st or at center point of sts it passes over. The colors are never twisted and one another.*

With MC and smaller needle, cast on 192 sts. **Do not join.**

Working back and forth across needle, proceed as follows:

Work 8 rows stocking st, ending with RS facing for next row.

Next 2 rows: (Fold line). With A, knit.

With MC, work 2 rows stocking st. Work Chart II in stocking st until row 4 of chart is complete, reading **knit** rows from **right** to left and **purl** rows from **left** to right, noting the 16 st rep will be worked 12 times.

With MC work 2 rows stocking st.

Change to larger needles and work Chart I in stocking st, reading **knit** rows from **right** to left and **purl** rows from **left** to right, noting the 32 st rep will be worked 6 times.

With MC, work 4 rows stocking st.

Work Chart II in stocking st to end of chart.

Rows 1 to 14 of Chart II form pat. Cont in pat until work from beg measures approx 37 ins [94 cm] ending with 14th row of Chart II.

Work Chart III in stocking st to end of chart, reading **knit** rows from **right** to left and **purl** rows from **left** to right, noting the 16 st rep will be worked 12 times.

Work 19th to 56th rows of Chart I. Beg with 3rd row of Chart III, work Chart III in stocking st to end of chart.

Work 1st and 2nd rows of Chart III.

Change to smaller needles and proceed as follows:

With MC, work 2 rows stocking st. Work 1st to 4th rows of Chart II in stocking st.

With MC, work 2 rows stocking st. **Next 2 rows:** (Fold line). With A, knit.

With MC, work 8 rows stocking st. Cast off.



ABBREVIATIONS: www.patonsyarns.com/glossary

Finishing

Fold top and bottom edgings along fold lines to WS and sew in position.

Side edging: With RS of work facing, MC and smaller needle, pick up and knit 256 sts evenly along each side edge, picking up through both layers of top and bottom edgings.

With MC, work 3 rows stocking st. Work 1st to 4th rows of Chart II in stocking st, noting the 16 st rep will be worked 16 times.

With MC, work 2 rows stocking st. **Next 2 rows:** (Fold line) With A, knit.

With MC, work 8 rows stocking st. Cast off.

Fold side edgings along fold lines to WS and sew in position. Sew ends of side edgings closed.

Pin Blanket to measurements. Cover with a damp cloth leaving to dry.

CHART I

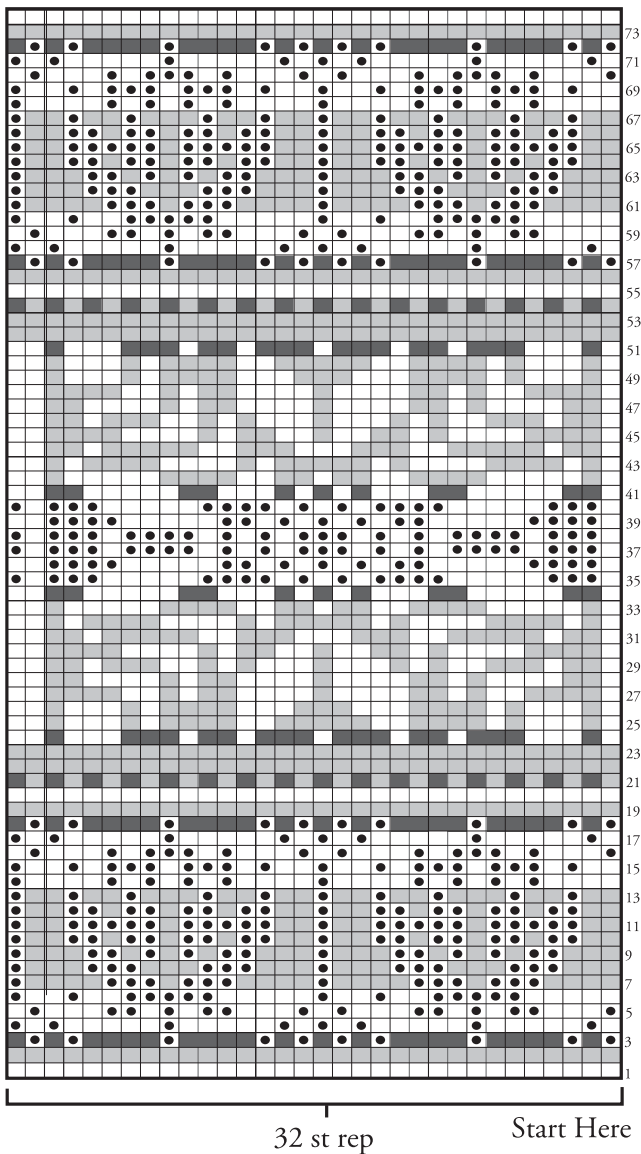


CHART II

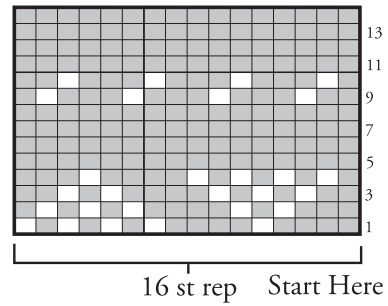
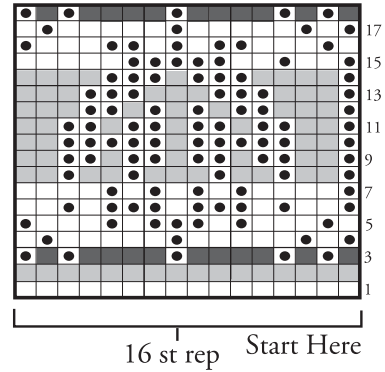






CHART III



Key

-  = MC
-  = Contrast A
-  = Contrast B
-  = Contrast C

Patons

... a part of your life.

P.O. Box 40, Listowel ON N4W 3H3