



## Trellis Squares (to knit)

### Measurement

Approx. 50 x 64 ins [127 x 162.5 cm]

### Materials

Patons® Decor (100 g/3.5 oz)

16 balls

Size 4½ mm (U.S. 7) knitting needles **or size needed to obtain tension.**

### Tension

18 sts and 36 rows = 4 ins [10 cm] in pat.  
One square = 14 ins [35.5 cm].

### Abbreviations

**Inc 1** = Knit into front and back of next st.  
**K1B** = Knit into back loop of next st.

### Instructions

#### Square (Make 12)

Cast on 3 sts and work Chart reading **right** side rows from **right** to left and working **wrong** side rows as follows:

**2nd and alt rows:** (Wrong side). K1. Inc 1.  
Knit to end of row.

Cont in this manner until row 87 is worked.

**88th and alt rows:** K1. Sl1. K1. pssso. Knit to end of row.

Cont in this manner until row 177 is worked. 1 st remains. Fasten off.

#### FINISHING

Sew squares into 3 strips, 4 squares long using a flat seam as illustrated.

**Edging:** Cast on 10 sts.

**1st row:** (Wrong side). K5. yfwd. K2tog. yfwd. K3. 11 sts.

**2nd and alt rows:** Knit.

**3rd row:** K5. yfwd. K2tog. yfwd. K4. 12 sts.

**5th row:** K5. yfwd. K2tog. yfwd. K5. 13 sts.

**7th row:** K5. yfwd. K2tog. yfwd. K6. 14 sts.

**9th row:** K5. yfwd. K2tog. yfwd. K7. 15 sts.

**11th row:** K5. yfwd. K2tog. yfwd. K8. 16 sts.

**13th row:** K5. yfwd. K2tog. yfwd. K9. 17 sts.

**15th row:** K5. yfwd. K2tog. yfwd. K10. 18 sts.

**17th row:** K5. yfwd. K2tog. yfwd. K11. 19 sts.

**19th row:** K5. yfwd. K2tog. yfwd. K12. 20 sts.

**21st row:** K5. yfwd. K2tog. yfwd. K13. 21 sts.

**23rd row:** K5. yfwd. K2tog. yfwd. K14. 22 sts.

**25th row:** K5. yfwd. K2tog. yfwd. K15. 23 sts.

**26th row:** Cast off 13 sts. Knit to end of row. 10 sts.

Rep rows 1-26, 5 more times.

**157th row:** K5. yfwd. K2tog. yfwd. K3. 11 sts.

**158th row:** K10. **Turn.**

**159th row:** K4. yfwd. K2tog. yfwd. K4. 12 sts.

**160th row:** As 158th row.

**161st row:** K3. yfwd. K2tog. yfwd. K5. 13 sts.

**162nd row:** As 158th row.

**163rd row:** K2. yfwd. K2tog. yfwd. K6. 14 sts.

**164th row:** As 158th row.

**165th row:** K1. yfwd. K2tog. yfwd. K7. 15 sts.

**166th row:** K12. **Turn.**

**167th row:** K2. yfwd. K2tog. yfwd. K8. 16 sts.

**168th row:** K14. **Turn.**

**169th row:** K3. yfwd. K2tog. yfwd. K9. 17 sts.

**170th row:** K16. **Turn.**

**171st row:** K4. yfwd. K2tog. yfwd. K10. 18 sts.

**172nd row:** K18.

**173rd row:** K5. yfwd. K2tog. yfwd. K11. 19 sts.

**174th row:** K19.

**175th row:** K5. yfwd. K2tog. yfwd. K12. 20 sts.

**176th row:** K20

**177th row:** K5. yfwd. K2tog. yfwd. K13. 21 sts.

**178th row:** K21.

**179th row:** K5. yfwd. K2tog. yfwd. K14. 22 sts.

**180th row:** K22.

**181st row:** K5. yfwd. K2tog. yfwd. K15. 23 sts.

**182nd row:** As 26th row.

Rep rows 1-26, 20 times.

Rep rows 157-182, once.

Rep rows 1-26, 12 times.

Rep rows 157-182, once.

Rep rows 1-26, 20 times.

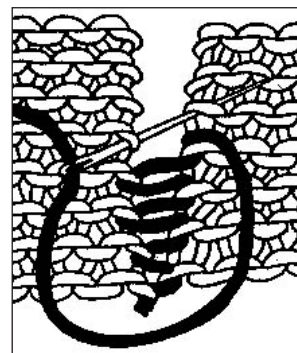
Rep rows 157-182, once.

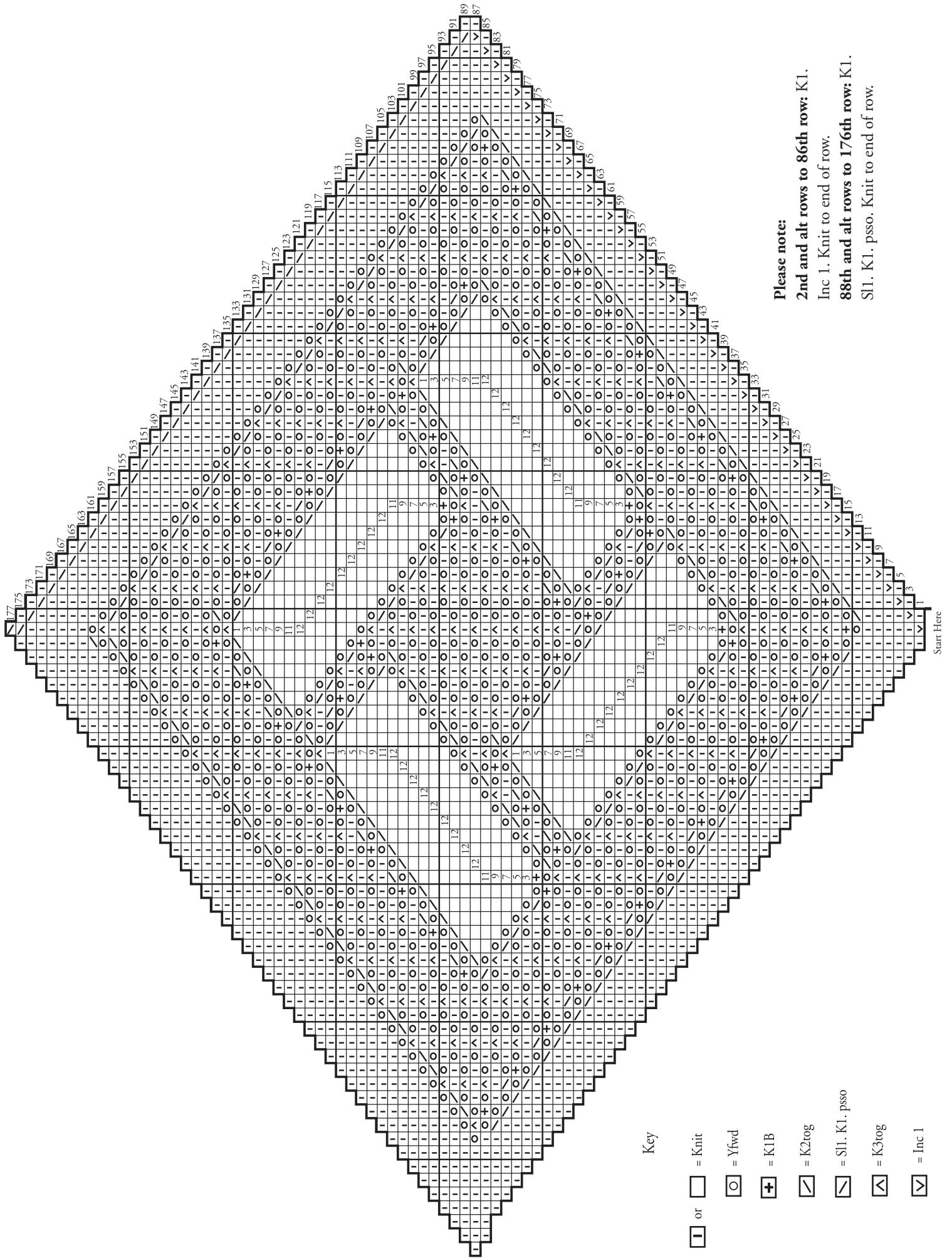
Rep rows 1-26, 6 times. Cast off.

Sew cast on and cast off edges together.

Sew edging around throw using a flat seam.

### Flat Seam





**Please note:**









**2nd and alt rows to 86th row: K1.**

Inc 1. Knit to end of row.

**88th and alt rows to 176th row: K1.**

Sl1. K1. pss0. Knit to end of row.

**Key**

-  or  = Knit
-  = Yfwd
-  = K1B
-  = K2tog
-  = Sl1. K1. pss0
-  = K3tog
-  = Inc 1

Start Here