



Gayle Bunn  
Designer



KNIT | SKILL LEVEL: INTERMEDIATE

### ABBREVIATIONS

**Alt** = Alternate(ing)  
**Beg** = Beginning  
**C4B** = Slip next 2 stitches onto cable needle and leave at back of work. K2, then K2 from cable needle  
**C4F** = Slip next 2 stitches onto cable needle and leave at front of work. K2, then K2 from cable needle

**Cont** = Continue(ity)  
**Dec** = Decrease  
**Inc** = Increase  
**K** = Knit  
**K2tog** = Knit next 2 stitches together  
**P** = Purl  
**Pat** = Pattern  
**Rem** = Remain(ing)  
**Rep** = Repeat  
**RS** = Right side  
**St(s)** = Stitch(es)

**T3B** = Slip next stitch onto cable needle and leave at back of work. K2, then P1 from cable needle  
**T3F** = Slip next 2 stitches onto cable needle and leave at front of work. P1, then K2 from cable needle  
**Tog** = Together  
**WS** = Wrong side

### SIZES

#### To fit chest measurement

**XS/S** 28-34" [71-86.5 cm]  
**M** 36-38" [91.5-96.5 cm]  
**L** 40-42" [101.5-106.5 cm]  
**XL** 44-46" [112-117 cm]  
**2/3XL** 48-54" [122-137 cm]  
**4/5XL** 56-62" [142-157.5 cm]

#### Finished chest

**XS/S** 37" [94 cm]  
**M** 41" [104 cm]  
**L** 44" [112 cm]  
**XL** 48" [122 cm]  
**2/3XL** 56" [142 cm]  
**4/5XL** 63" [160 cm]

### MATERIALS

Patons® Alpaca Blend™ (3.5 oz/100 g; 155 yds/142 m)

Sizes	XS/S	M	L	XL	2/3XL	4/5XL	
Baltic (01017)	6	6	7	8	9	10	balls

Sizes U.S. 9 (5.5 mm) and U.S. 10 (6 mm) knitting needles **or size needed to obtain gauge.** Cable needle. 4 st holders. Yarn needle.

## GAUGE

15 sts and 20 rows = 4" [10 cm] in stocking st with larger needles.

## INSTRUCTIONS

*The instructions are written for smallest size. If changes are necessary for larger sizes the instructions will be written thus (.). Numbers for each size are shown in the same color throughout the pattern. When only one number is given in black, it applies to all sizes.*

**CABLE PANEL A** (worked over 6 sts).

(See chart on page 4).

**1st row:** (RS). K2. P2. K2

**2nd row:** P2. K2. P2.

**3rd and 4th rows:** Rep 1st and 2nd rows.

**5th row:** T3F. T3B.

**6th row:** K1. P4. K1.

**7th row:** P1. C4F. P1.

**8th row:** As 6th row.

**9th row:** T3B. T3F.

**10th row:** As 2nd row.

These 10 rows form Cable Panel A.

**CABLE PANEL B** (worked over 16 sts).

(See chart on page 4).

**1st row:** (RS). K4. C4B. C4F. K4.

**2nd and alt rows:** P16.

**3rd row:** K2. C4B. K4. C4F. K2.

**5th row:** C4B. K8. C4F.

**6th row:** P16.

These 6 rows form Cable Panel B.

**CABLE PANEL C** (worked over 6 sts).

(See chart on page 4).

**1st row:** (RS). K2. P2. K2

**2nd row:** P2. K2. P2.

**3rd and 4th rows:** Rep 1st and 2nd rows.

**5th row:** T3F. T3B.

**6th row:** K1. P4. K1.

**7th row:** P1. C4B. P1.

**8th row:** As 6th row.

**9th row:** T3B. T3F.

**10th row:** As 2nd row.

These 10 rows form Cable Panel C.

## FRONT

\*\*With smaller needles, cast on **69 (77-83-91-105-119)** sts.

**1st row:** (RS). \*K1. P1. Rep from \* to last st. K1.

**2nd row:** \*P1. K1. Rep from \* to last st. P1.\*\*

Rep last 2 rows (K1. P1) ribbing for 3" [7.5 cm], ending on a 2nd row and inc **17 (17-25-23-29-29)** sts evenly across last row. **86 (94-108-114-134-148)** sts.

Change to larger needles and proceed in pat as follows:

**1st row:** (RS). **K7 (11-5-8-5-12)**. (P2. Work 1st row of Cable Panel A across next 6 sts. P2. K3) **2 (2-3-3-4-4)** times. P2. Work 1st row of Cable Panel B across next 16 sts. P2. (K3. P2. Work 1st row of Cable Panel C across next 6 sts. P2) **2 (2-3-3-4-4)** times. **K7 (11-5-8-5-12)**.

**2nd row:** **P7 (11-5-8-5-12)**. (K2. Work 2nd row of Cable Panel C across next 6 sts. K2. P3) **2 (2-3-3-4-4)** times. K2. Work 2nd row of Cable Panel B across next 16 sts. K2. (P3. K2. Work 2nd row of Cable Panel A across next 6 sts. K2) **2 (2-3-3-4-4)** times. **P7 (11-5-8-5-12)**.

Cable Panels are now in position.

Cont in pat, keeping cont of Cable Panels, until work from beg measures **17½ (17½-17½-18-18-18)" [44.5 (44.5-44.5-45.5-45.5-45.5) cm]**, ending on a WS row.

**Shape armholes:** Keeping cont of pat, cast off **4 (4-4-4-4-8)** sts beg next 2 rows. **78 (86-100-106-126-132)** sts rem.

Cont even in pat until armhole measures **6 (6½-7-7½-8-8)" [15 (16.5-18-19-20.5-20.5) cm]**, ending on a WS row.

**Shape neck: Next row:** (RS). Pat across **25 (28-35-37-47-49)** sts (neck edge). Turn. Leave rem sts on a st holder.

Work 1 row even in pat. Keeping cont of pat, dec 1 st at neck edge on next row and following RS rows 3 times more. **21 (24-31-33-43-45)** sts.

Cont even in pat until armhole measures **8½ (9-9½-10-10½-10½)" [21.5 (23-24.5-25-26.5-26.5) cm]**, ending on a WS row.

**Shape shoulder:** Keeping cont of pat, cast off **7 (8-10-11-14-15)** sts beg next and following alt row.

Work 1 row even.

Cast off rem **7 (8-11-11-15-15)** sts.

With RS facing, slip center **28 (30-30-32-32-34)** sts onto st holder.

Rejoin yarn to rem sts and pat to end of row.

Work 1 row even in pat.

Keeping cont of pat, dec 1 st at neck edge on next row and following RS rows 3 times more. **21 (24-31-33-43-45)** sts.

Cont even in pat until armhole measures **8½ (9-9½-10-10½-10½)" [21.5 (23-24.5-25-26.5-26.5) cm]**, ending on a RS row.

**Shape shoulder:** Keeping cont of pat, cast off **7 (8-10-11-14-15)** sts beg next and following alt row.

Work 1 row even.

Cast off rem **7 (8-11-11-15-15)** sts.

## BACK

Work from \*\* to \*\* as given for Front.

Rep last 2 rows (K1. P1) ribbing for 3" [7.5 cm], ending on a 2nd row and inc 1 st in center of last row. **70 (78-84-92-106-120)** sts.

Change to larger needles and proceed in stocking st until work from beg measures **17½ (17½-17½-18-18-18)" [44.5 (44.5-44.5-45-45-45) cm]**, ending on a purl row.

**Shape armholes:** Keeping cont of pat, cast off **4 (4-4-4-4-8)** sts beg next 2 rows. **62 (70-76-84-98-104)** sts rem.

Cont even until armhole measures **8½ (9-9½-10-10½-10½)" [21.5 (23-24.5-25-26.5-26.5) cm]**, ending on a purl row.

**Shape shoulders:** Cast off **6 (7-8-9-11-12)** sts at beg of next 4 rows, then **6 (7-8-9-12-12)** sts beg following 2 rows. Leave rem **26 (28-28-30-30-32)** sts on a st holder.

## SLEEVES

With smaller needles, cast on **37 (39-41-41-43-43)** sts.

Work 3" [7.5 cm] in (K1. P1) ribbing as given for Front, ending on a 2nd row and inc **4 (4-4-6-8-8)** sts evenly across last row. **41 (43-45-47-51-51)** sts.

Change to larger needles and proceed in stocking st for 4 rows.

Inc 1 st each end of next row and every following 4th row until there are **53 (57-61-71-75-75)** sts.

**Sizes XS/S, M and L only:** Inc 1 st each end of every following 6th row until there are **61 (63-67)** sts.

**All sizes:** Cont even until Sleeve measures **19½ (19½-20-19-19-19)" [49.5 (49.5-51-48.5-48.5-48.5) cm]**, ending on a purl row.

**Shape top:** Cast off **8 (9-9-10-10-10)** sts beg next 6 rows. Cast off rem **13 (9-13-11-15-15)** sts. Place markers on side edges of Sleeves **1 (1-1-1-1-2)" [2.5 (2.5-2.5-2.5-2.5-5) cm]** down from cast off edge.

## FINISHING

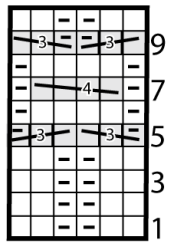
Pin all pieces to measurements. Cover with a damp cloth, leaving cloth to dry.

**Collar:** Sew right shoulder seam. With RS facing and smaller needles, pick up and knit 14 sts down left front neck edge. **K28 (30-30-32-32-34)** from front st holder, dec 5 sts evenly across. Pick up and knit 14 sts up right front neck edge. **K26 (28-28-30-30-32)** from back st holder. **77 (81-81-85-85-89)** sts.

Beg on a 2nd row, work 7½" [19 cm] in (K1. P1) ribbing as given for Front. Cast off loosely in ribbing. Sew left shoulder and collar seam.

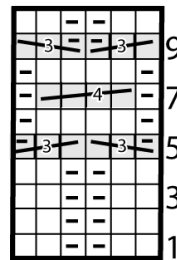
Sew in sleeves placing rows above markers along cast off sts of Front and Back to form square armholes. Sew side and sleeve seams.

Cable Panel A



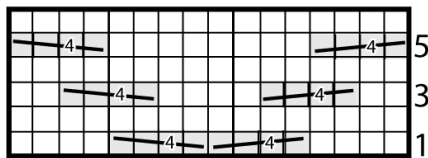
Start Here

Cable Panel C



Start Here

Cable Panel B



Start Here

### Key

☐ = Knit on RS rows. Purl on WS rows.

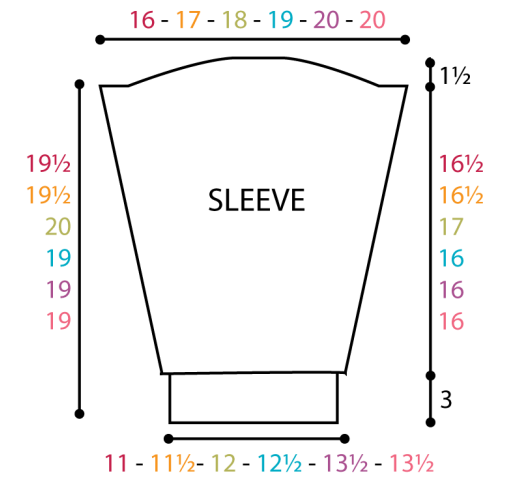
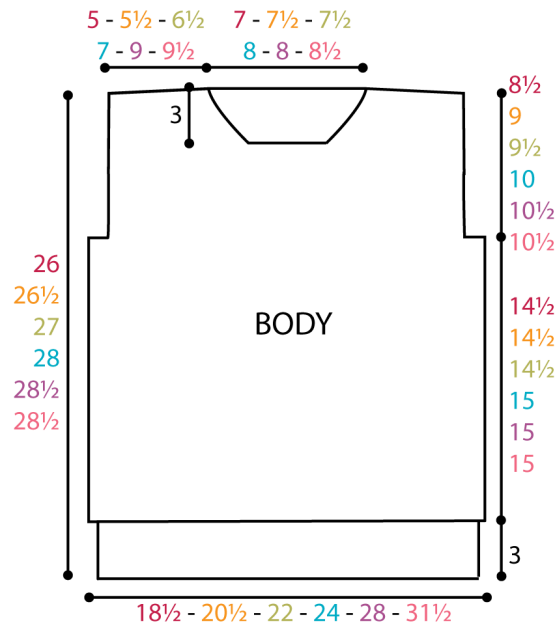
☐ = Purl on RS rows. Knit on WS rows.

= T3B

= T3F

= C4B

= C4F



FRONT



BACK