



INTERMEDIATE

MEASUREMENTS

Chest measurement

- S** 30-32" [76-81 cm]
- M** 34-36" [86-91 cm]
- L** 38-40" [97-102 cm]
- XL** 42-44" [107-112 cm]

Finished chest

- S** 40" [101.5 cm]
- M** 44" [112 cm]
- L** 47" [119.5 cm]
- XL** 51" [129.5 cm]

GAUGE

18 sts and 24 rows = 4" [10 cm] with larger needles in stocking st.

MATERIALS

Patons® Classic Wool™ (3.5 oz/100 g) or Patons® Décor™ (3.5 oz/100 g; 208 yds/190 m)

SIZES	S	M	L	XL	
Aran (87602)	10	10	11	12	balls

Sizes U.S. 6 (4 mm) and U.S. 8 (5 mm) knitting needles or size needed to obtain gauge. Cable needle. 6 buttons.

INSTRUCTIONS

The instructions are written for smallest size. If changes are necessary for larger sizes, the instructions will be written thus: ().

PANEL PAT A (worked over 20 sts).

1st row: P2. C2B. P2. C4B. C4F. P2. C2F. P2.

2nd row: K2. P2. K2. P8. K2. P2. K2.
3rd row: P2. C2B. P2. K8. P2. C2F. P2.

4th row: As 2nd row.

These 4 rows form Panel Pat A.

PANEL PAT B (worked over 20 sts).

1st row: P2. C4B. P2. K4. P2. C4B. P2.

2nd and alt row: Knit all knit sts and purl all purl sts as they appear.

3rd row: P2. K4. P2. C4B. P2. K4. P2.

5th row: As 1st row.

7th row: T4B. T4F. C4B. T4B. T4F.

9th row: K2. P4. (C4F) twice. P4. K2.

11th row: K2. P4. K2. C4B. K2. P4. K2.

13th row: As 9th row.

15th row: T4F. T4B. C4B. T4F. T4B.

16th row: As 2nd row.

These 16 rows form Panel Pat B.

BACK

With smaller needles, cast on **95 (105-115-125)** sts.

1st row: (RS). K1. *P1. K1. Rep from * to end of row.

2nd row: P1. *K1. P1. Rep from * to end of row.

Rep these 2 rows (K1.P1) ribbing for 2" [5 cm] ending on a 2nd row and inc **25 (27-25-27)** sts evenly across last row. **120 (132-140-152)** sts.

Change to larger needles and proceed in pat as follows:

1st row: (RS). (P1. KB1) **5 (8-10-13)** times. (Work 1st row of Panel Pat A. Work 1st row of Panel Pat B) twice. Work 1st row of Panel Pat A. (KB1. P1) **5 (8-10-13)** times.

2nd row: **K10 (16-20-26)**. (Work 2nd row of Panel Pat A. Work 2nd row of Panel Pat B) twice. Work 2nd row of Panel Pat A. **K10 (16-20-26)**.

These 2 rows form rice st pat.

Panel pats are now in position.

Cont in pat, keeping cont of panel pats, until work from beg measures

15 (15½-16-17)" [38 (39.5-40.5-43) cm], ending with RS facing for next row.



Shape raglans: Keeping cont of pat, cast off **4 (4-5-5)** sts beg next 2 rows. **112 (124-130-142)** sts.

Next row: K1. Sl1. K1. pss0. Pat to last 3 sts. K2tog. K1.

Next row: P2. Pat to last 2 sts. P2. Rep last 2 rows **22 (20-19-15)** times more. **66 (82-90-110)** sts.

Next row: K1. Sl1. K1. pss0. Pat to last 3 sts. K2tog. K1.

Next row: P1. P2tog. Pat to last 3 sts. P2togtbl. P1.

Rep last 2 rows **9 (12-13-18)** times more. **26 (30-34-34)** sts.

Size L only: Next row: (RS). K1. Sl1. K1. pss0. Pat to last 3 sts. K2tog. K1. 32 sts.

Next row: P2. Pat to last 2 sts. P2.

All Sizes: Cast off.

POCKET LININGS (Make 2).

With larger needles, cast on 24 sts and work 6 rows in stocking st, ending with RS facing for next row. Leave these sts on a spare needle.

LEFT FRONT

With smaller needles, cast on **49 (53-59-63) sts.

Work 2" [5 cm] in (K1. P1 ribbing as

given for Back ending on a 2nd row and inc **10 (12-10-12)** sts evenly across last row. **59 (65-69-75)** sts.**

Change to larger needles and proceed in pat as follows:

1st row: (RS). (P1. KB1) **5 (8-10-13)** times. Work 1st row of Panel Pat A. Work 1st row of Panel Pat B. (P2. C2B) twice. P1.

2nd row: K1. (P2. K2) twice.

Work 2nd row of Panel Pat B. Work 2nd row of Panel Pat A. **K10 (16-20-26)**.

These 2 rows form rice st pat.

Panel pats are now in position.

Cont in pat, keeping cont of panel pats for 4 more rows.

Divide for pocket: Next row: (RS). Pat across **10 (16-20-26)** sts. K24 from first pocket lining. Leave rem 49 sts on a spare needle.

Next row: P24 from first pocket lining. Pat across **10 (16-20-26)** sts.

Cont in pat on these **34 (40-44-50)** sts as established until 37 rows in total have been worked.

Next row: (WS). Cast off 24 sts. Pat to end of row. **10 (16-20-26)**

sts rem. **Do not** break yarn. Leave these sts on a spare needle.

With RS of work facing, join second ball of yarn to rem 49 sts. Pat to end of row.

Work a further 37 rows pat, thus ending with RS facing for next row. Break yarn.

Joining row: (RS). Pat across **10 (16-20-26)** sts from left side. Pat across 49 sts. **59 (65-69-75)** sts.

Cont in pat until work from beg measures **15 (15½-16-17)" [38 (39.5-40.5-43)** cm], ending with RS facing for next row.

Shape raglan and V-neck:

1st row: (RS). Cast off **4 (4-5-5)** sts (raglan edge). Pat to last 5 sts. Work 2tog (v-neck shaping). C2B. P1. **54 (60-63-69)** sts rem.

2nd row: Pat to last 2 sts. P2.

3rd row: K1. Sl1. K1. pss0. Pat to end of row.

Keeping cont of pat, dec 1 st at raglan edge as before on every following alt row from previous dec **22 (20-19-15)** times more, then every row **7 (11-19-27)**

times, AT THE SAME TIME, dec 1 st at V-neck edge on every following **6th (6th-4th-4th)** row from previous dec **9 (9-13-13)** times more. **15 (17-12-13)** sts rem.

Dec 1 st at raglan edge, as before, on every row **13 (15-10-11)** times more. 2 sts rem.

Size L only: Next row: (WS). P2.

All sizes: Next row: (RS). Sl1. K1. pss0. Fasten off.

RIGHT FRONT

Work from ** to ** as given for Left Front.

Change to larger needles and proceed in pat as follows:

1st row: (RS). P1. (C2F. P2) twice. Work 1st row of Panel Pat B. Work 1st row of Panel Pat A. (KB1. P1) **5 (8-10-13)** times.

2nd row: **K10 (16-20-26)**. Work 2nd row of Panel Pat A. Work 2nd row of Panel Pat B. (K2. P2) twice. K1.

These 2 rows form rice st pat.

Panel pats are now in position.

Cont in pat, keeping cont of panel pats for 4 more rows.



Divide for pocket: Next row: (RS). Pat across 49 sts. Turn. Leave rem **10 (16-20-26)** sts on a spare needle.

Work a further 37 rows pat, thus ending with RS facing for next row.

Do not break yarn.

With RS of work facing and second ball of yarn, K24 from 2nd pocket lining. Pat across rem **10 (16-20-26)** sts on spare needle.

Next row: Pat across **10 (16-20-26)** sts. P24 from second pocket lining.

Cont in pat on these **34 (40-44-50)** sts as established until 37 rows in total have been worked.

Next row: (WS). Pat across **10 (16-20-26)** sts. Cast off 24 sts.

Fasten off.

Joining row: (RS). Pat across 49 sts. Pat across **10 (16-20-26)** sts from left side. **59 (65-69-75)** sts. Cont in pat until work from beg measures **15 (15½-16-17)" [38 (39.5-40.5-43) cm]**, ending with WS facing for next row.

Shape raglan and V-neck:

1st row: Cast off **4 (4-5-5)** sts (raglan edge). Pat to end of row.

2nd row: P1.C2B.Work2tog(v-neck shaping). Pat to last 3 sts. K2tog. K1. **53 (59-62-68)** sts.

3rd row: Work even in pat.

Keeping cont of pat, dec 1 st at raglan edge as before on every following alt row from previous dec **22 (20-19-15)** times more, then every row **7 (11-19-27)** times, AT THE SAME TIME, dec 1 st at V-neck edge on every following **6th (6th-4th-4th)** row from previous dec **9 (9-13-13)** times more. **15 (17-12-13)** sts rem.

Dec 1 st at raglan edge, as before, on every row **13 (15-10-11)** times more. 2 sts rem.

Size L only: Next row: (WS). P2.

Next row: (RS). K2tog. Fasten off.

SLEEVES

With smaller needles, cast on 57 sts and work 2" [5 cm] in (K1. P1) ribbing as given for Back ending on a 2nd row and inc 15 sts evenly across last row. 72 sts.

Change to larger needles and proceed in pat as follows:

1st row: (RS). (P1. KB1) 3 times. Work 1st row of Panel Pat A. Work 1st row of Panel Pat B. Work 1st row of Panel Pat A. (KB1. P1) 3 times.

2nd row: K6. Work 2nd row of Panel Pat A. Work 2nd row of Panel Pat B. Work 2nd row of Panel Pat A. K6.

These 2 rows form rice st pat.

Panel pats are now in position.

Sizes L and XL only: Cont in pat, keeping cont of panel pats, inc 1 st each end of needle on next and following 4th rows until there are **(76-80)** sts, taking inc sts into rice pat. Work 5 rows even in pat.

All Sizes: Cont in pats, keeping cont of panel pats, inc 1 st each end of needle on next and following 6th rows until there are **98 (100-104-108)** sts taking inc sts into rice pat.

Cont even in pat until Sleeve from beg measures **18 (18½-19-19½)" [45.5 (47-48-49.5) cm]** ending with RS facing for next row.

Shape raglans: Keeping cont of pat, cast off **4 (4-5-5)** sts beg next

2 rows. **90 (92-94-98)** sts.

1st row: K2. Sl1. K1. pssso. Pat to last 4 sts. K2tog. K2.

2nd row: P2. Pat to last 2 sts. P2. Rep last 2 rows **30 (31-31-30)** times more. **28 (28-30-36)** sts.

Next row: K2. Sl1. K1. pssso. Pat to last 4 sts. K2tog. K2.

Next row: P2. P2tog. Pat to last 4 sts. P2togtbl. P2.

Rep last 2 rows **1 (1-1-3)** time(s) more. **20 (20-22-20)** sts.

Size L only: Next row: (RS). K2. Sl1. K1. pssso. Pat to last 4 sts. K2tog. K2. 20 sts.

Next row: P2. Pat to last 2 sts. P2.

All Sizes: Cast off.

FINISHING









Pin garment pieces to measurements. Cover with a damp cloth leaving to dry. Sew raglan seams.

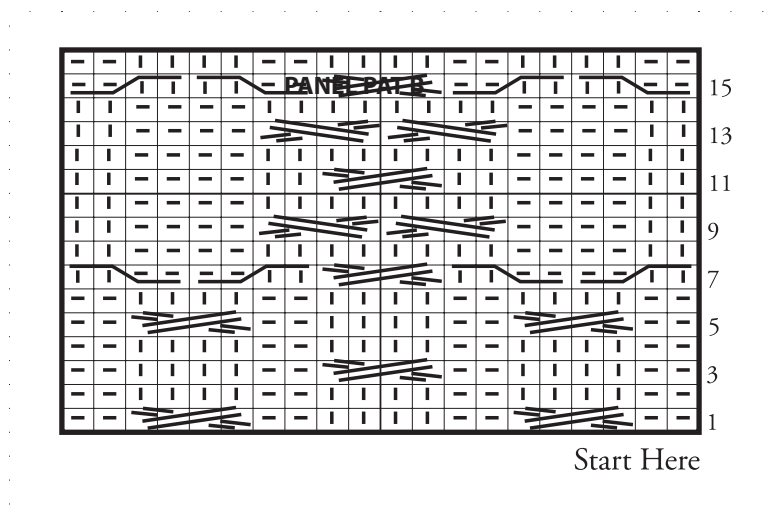
Button and Buttonhole Band:

With smaller needles, cast on 9 sts. Proceed in (K1. P1) ribbing as given for Back until band when slightly stretched, fits up Left Front for Her or Right Front for Him to shoulder, sewing in place as you



Key

-  = Knit on RS rows and purl on WS rows.
-  = Purl on RS rows and knit on WS rows.
-  = C2F
-  = C2B
-  = C4B
-  = C4F
-  = T4B
-  = T4F



ABBREVIATIONS: www.yarnspirations.com/abbreviations

Approx = Approximate(ly)

Beg = Begin(ning)

Cont = Continue(ity)

C2B = Knit into front of 2nd st on left hand needle, then knit into front of 1st st, slipping both sts off needle tog.

C2F = Working behind first st. Knit into front of 2nd st on left hand needle, then knit into front of first st, slipping both sts off needle tog.

C4B = Slip next 2 sts onto a cable needle

and leave at back of work. K2, then K2 from cable needle.

C4F = Slip next 2 sts onto a cable needle and leave at front of work. K2, then K2 from cable needle.

Dec = Decrease(ing)

Inc = Increase(ing)

K = Knit

KB1 = Knit into back of next st.

P = Purl

Pat = Pattern

Pss = Pass slipped stitch over

Rep = Repeat(ing)

RS = Right side

St(s) = Stitch(es)

T4B = Slip next 2 sts onto a cable needle and leave at back of work. K2, then P2 from cable needle.

T4F = Slip next 2 sts onto a cable needle and leave at front of work. P2, then K2 from cable needle.

WS = Wrong side