



MATERIALS

Patons® Canadiana™ (3.5 oz/100 g; 205 yds/187 m)

Sizes	XS/S	M	L	XL	2/3XL	4/5XL	
Main Color (MC) Cardinal (10707)	6	7	8	9	10	11	balls
Contrast A Winter White (10006)	2	2	2	2	3	3	balls

Sizes U.S. 5 (3.75 mm) and U.S. 7 (4.5 mm) knitting needles **or size needed to obtain gauge.** 2 stitch holders. 2 stitch markers.

ABBREVIATIONS: yarnspirations.com/abbreviations

Alt = Alternate(ing)

Approx = Approximate(ly)

Beg = Begin(ning)

Cont = Continue

Dec = Decrease(ing)

Inc = Increase(ing)

K = Knit

P = Purl

Pat = Pattern

Rem = Remain(ing)

Rep = Repeat

RS = Right side

St(s) = Stitch(es)

WS = Wrong side



INTERMEDIATE

SIZES

To fit bust/chest measurement

XS/S 28-34" [71-86.5 cm]

M 36-38" [91.5-96.5 cm]

L 40-42" [101.5-106.5 cm]

XL 44-46" [112-117 cm]

2/3XL 48-54" [122-137 cm]

4/5XL 56-62" [142-157.5 cm]

Finished bust/chest

XS/S 38" [96.5 cm]

M 42" [107 cm]

L 46" [117 cm]

XL 49" [124 cm]

2/3XL 57" [144.5 cm]

4/5XL 64" [162.5 cm]

INSTRUCTIONS

The instructions are written for smallest size. If changes are necessary for larger sizes the instructions will be written thus (). When only one number is given, it applies to all sizes. For ease in working, circle all numbers pertaining to your size.

Note: When working from charts with Fair Isle technique, carry color not in use loosely across WS of work but never over more than 5 sts. When it must pass over more than 5 sts, weave it loosely over and under color in use on WS.

GAUGE

20 sts and 26 rows = 4" [10 cm] in stocking stitch with larger needles.



Work Maple Leaf Motif Chart using intarsia technique. When working from chart, wind small balls of the colors to be used, one for each separate area of color in the design. Start new colors at appropriate points. To change colors, twist the two colors around each other where they meet, on WS, to avoid a hole.

FRONT

With MC and smaller needles, cast on **95 (**103-111-119-137-161**) sts.

1st row: (RS). K1. *P1. K1. Rep from * to end of row.

2nd row: P1. *K1. P1. Rep from * to end of row.

Rep last 2 rows of (K1. P1) ribbing for **3** (**3-3-3-2-2**)" [**7.5** (**7.5-7.5-7.5-5-5**) cm], ending on a WS row and inc **4** (**4-4-4-8-8**) sts evenly across last row. **99** (**107-115-123-149-169**) sts.

Change to larger needles and work Chart I to end of chart, reading **knit** rows from **right** to left and **purl** rows from **left** to right (**do not** work 'Canada' – it should be embroidered in duplicate st after sweater is complete). See charts on page 4.

Work Chart II in Fair Isle technique as follows: Carry color not in use loosely across WS of work but never over more than 5 sts. When it must pass over more than 5 sts, weave it loosely over and under color in use on WS.

Work Chart II to end of chart, reading **knit** rows from **right** to left and **purl** rows from **left** to right and noting 8-st rep will be worked **12** (**13-14-15-18-21**) times.**

Rep 1st and 2nd rows of Chart II once more.

Work Maple Leaf Motif Chart III using intarsia technique. Keeping cont of Chart II Fair Isle Pat, place Chart III as follows:

1st row: (RS). Pat **17** (**17-25-25-34-40**) sts. Knit 1st row of Chart III across next 19 sts, reading row from **right** to left. Pat to end of row.

2nd row: Pat **63** (**71-71-79-96-110**) sts. Purl 2nd row of Chart III across next 19 sts, reading row from **left** to right. Pat to end of row.

Chart III is now in position.

Cont in pat to end of Chart III.

Cont even in Chart II Fair Isle Pat until work from beg measures approx 18" [46 cm], ending on a 2nd row of Chart II.

Work Maple Leaf Motif Chart III using intarsia technique.

Keeping cont of Chart II Fair Isle Pat, place Chart III as follows:

1st row: (RS). Pat **65** (**73-73-81-98-112**) sts. Knit 1st row of Chart III across next 19 sts. Pat to end of row.

2nd row: Pat **15** (**15-23-23-32-38**) sts. Purl 2nd row of Chart III across next 19 sts. Pat to end of row.

Chart III is now in position.

Cont in pat to end of Chart III.

Cont in Chart II Fair Isle Pat until work from beg measures approx **21½** (**23-23½-25¾-24¾-25**)" [**54.5** (**58.5-59.5-65-63-63.5**) cm], ending on a purl row.

Shape neck: 1st row: (RS). Pat across **37** (**40-44-46-57-67**) sts (neck edge). **Turn.** Leave rem sts on a spare needle.

Dec 1 st at neck edge on next 4 rows, then every following alt row twice. **31** (**34-38-40-51-61**) sts. Cont even in Chart II Fair Isle Pat until work from beg measures approx **24½** (**26-26½-29-28-28½**)" [**62** (**66-67.5-73.5-71-72.5**) cm], ending on a purl row.

Shape shoulder: Cast off **10** (**11-13-13-17-20**) sts beg next and following alt row. Purl 1 row even. Cast off rem **11** (**12-12-14-17-21**) sts.

With RS facing, slip next **25** (**27-27-31-35-35**) sts onto a st holder. Join yarn to rem sts and pat to end of row.

Dec 1 st at neck edge on next 4 rows, then every following alt row twice. **31** (**34-38-40-51-61**) sts.

Cont in Chart II Fair Isle Pat until work from beg measures approx **24½** (**26-26½-29-28-28½**)" [**62** (**66-67.5-73.5-71-72.5**) cm], ending on a knit row.



Shape shoulder: Cast off 10 (11-13-13-17-20) sts beg next and following alt row. Knit 1 row even. Cast off rem 11 (12-12-14-17-21) sts.

BACK

Note: Back does not have Maple Leaves (Chart III).

Work from ** to ** as given for Front.

Cont in Chart II Fair Isle Pat until work from beg measures same length as Front to beg of shoulder shaping, ending on a purl row.

Shape shoulders: Cast off 10 (11-13-13-17-20) sts beg next 4 rows, then cast off 11 (12-12-14-17-21) sts beg following 2 rows. Leave rem 37 (39-39-43-47-47) sts onto a st holder.

SLEEVES

With MC and smaller needles, cast on 43 (43-47-47-55-55) sts. Work 3 (3-3-2-2-2)" 7.5 (7.5-7.5-5-5-5) in (K1. P1) ribbing as given for Front, inc 5 sts evenly across last row. 48 (48-52-52-60-60) sts.

Change to larger needles and work Chart IV in stocking st, reading knit rows from **right** to left and

purl rows from **left** to right, noting side incs at each end of 5th (5th-3rd-3rd-3rd-3rd) row and every following 4th (4th-2nd-2nd-2nd-2nd) row to 80 (86-64-64-72-78) sts, then every following 6th (6th-4th-4th-4th-4th) row to 86 (90-94-100-100-106) sts, taking inc sts into Chart IV Fair Isle Pat.

Cont even in Chart IV Fair Isle Pat until work from beg measures approx 17 (17½-18-18½-16-16)" [43(44.5-45.5-47-40.5-40.5)cm], ending on a WS row. Cast off.

FINISHING

Pin pieces to measurements. Cover with damp cloth, leaving cloth to dry.

Neckband: Sew right shoulder seam. With RS facing, MC and smaller needles, pick up and knit 20 (20-20-24-24-25) sts down left front neck edge. K25 (27-27-31-35-35) from Front st holder. Pick up and knit 20 (20-20-24-24-25) sts up right front neck edge. K37 (39-39-43-47-47) from Back st holder, dec 1 st at center. 99 (103-103-119-127-129) sts.

Work 3" [7.5 cm] in (K1. P1) ribbing as given for Front, ending on a WS row. Cast off loosely in ribbing.

Sew left shoulder and neckband seam. Fold neckband in half to WS and sew loosely in position. Place markers 8½ (9-9½-10-10-10½)" [21.5(23-24-25.5-25.5-26.5)] down from shoulders for armholes. Sew in sleeves between markers. Sew side and sleeve seams.

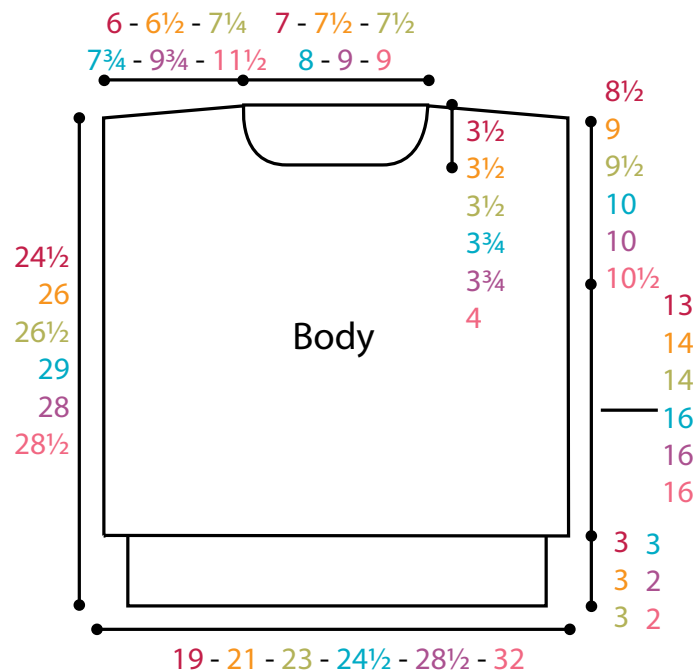
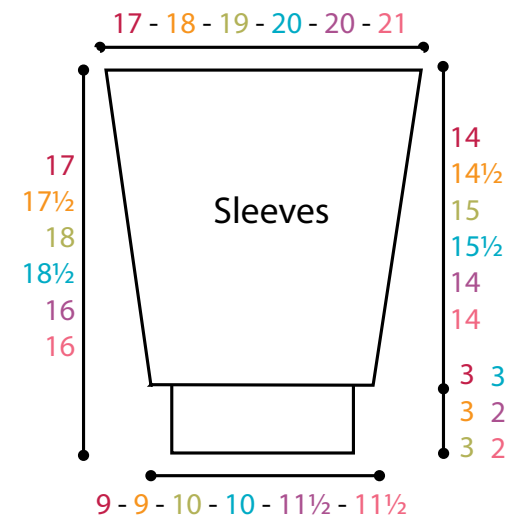
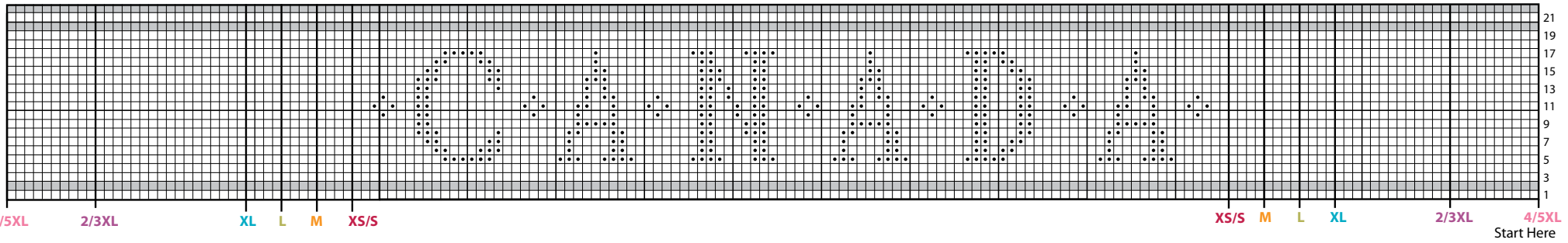




Chart I



Key

- MC
- Contrast A
- ▣ MC in duplicate st

Chart II

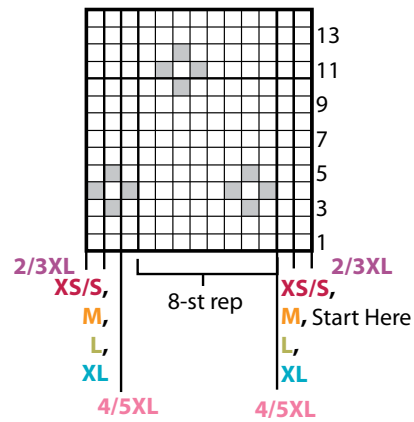


Chart III

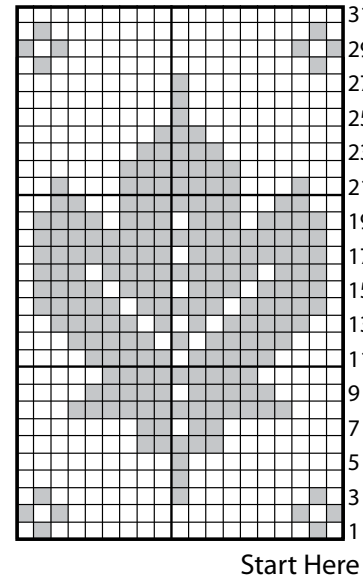
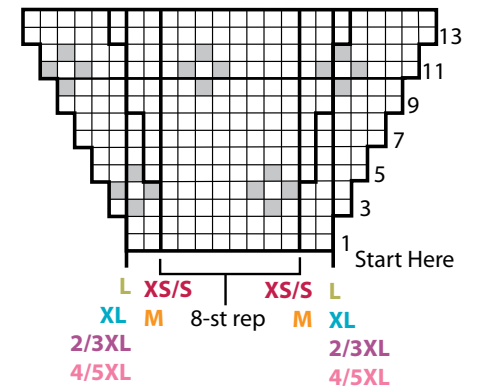
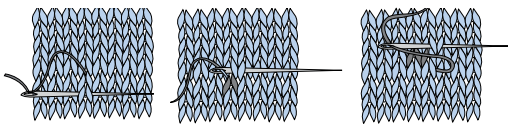


Chart IV (Sleeve)



Key

- MC
- ▣ Contrast A



Duplicate Stitch Diagram