



Emily Berney
Designer



KNIT | SKILL LEVEL: INTERMEDIATE

ABBREVIATIONS

Approx = Approximately

Beg = Beginning

C2B = Slip next stitch onto cable needle and leave at back of work. K1, then K1 from cable needle.

C2F = Slip next stitch onto cable needle and leave at front of work. K1, then K1 from cable needle.

Cr4B = Slip next 2 stitches onto cable needle and leave at back of work. K2, then (P1. K1) from cable needle.

Cr4F = Slip next 2 stitches onto cable needle and leave at front of work. K1. P1, then K2 from cable needle.

Dec = Decrease(ing)

Inc = Increase(ing)

K = Knit

P = Purl

Pat = Pattern

Rep = Repeat

RS = Right side

St(s) = Stitch(es)

Tw4B = Slip next 2 stitches onto cable needle and leave at back of work. K2, then P2 from cable needle.

Tw4F = Slip next 2 stitches onto cable needle and leave at front of work. P2, then K2 from cable needle.

Tw2R = Knit into front of 2nd stitch on needle, then knit into front of first stitch and slip both stitches off needle together

MATERIALS

Patons® Classic Wool Worsted™ (3.5 oz/100 g; 194 yds/177 m)

Gray Mix (00224)

3 balls

Size U.S. 7 (4.5 mm) knitting needles **or size needed to obtain gauge.** Cable needle.

MEASUREMENTS

Approx 8" x 80" [20.5 x 203 cm]

GAUGE

20 sts and 26 rows = 4" [10 cm] in stocking st.

INSTRUCTIONS

Cast on 37 sts.

Knit 4 rows (garter st), inc 3 sts evenly across last row. 40 sts.

Proceed in Cable Pat as follows:

1st row: (RS). K4. P1. C2B. P1. Tw4F. Tw4B. P3. Tw2R. P3. Tw4F. Tw4B. P1. C2F. P1. K4.

2nd row: K5. P2. K3. P4. K5. P2. K5. P4. K3. P2. K5.

3rd row: K4. P1. K2. P3. Tw4B. P4. C2B. C2F. P4. Tw4F. P3. K2. P1. K4.

4th row: K5. P2. K3. P2. K6. P4. K6. P2. K3. P2. K5.

5th row: K4. P1. C2B. P1. Tw4B. P4. Cr4B. Cr4F. P4. Tw4F. P1. C2F. P1. K4.

6th row: K5. P2. K1. P2. K6. P2. K1. P2. K1. P2. K6. P2. K1. P2. K5.

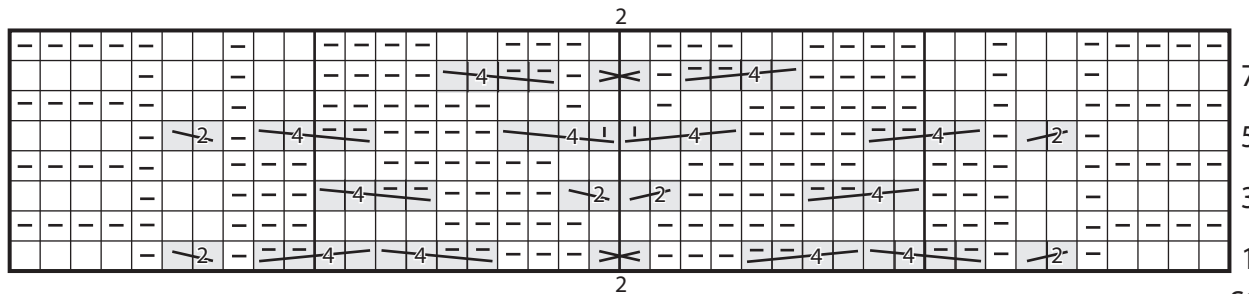
7th row: K4. P1. K2. P1. K2. P4. Tw4B. P1. Tw2R. P1. Tw4F. P4. K2. P1. K2. P1. K4.

8th row: K5. P2. K1. P2. K4. P2. K3. P2. K3. P2. K4. P2. K1. P2. K5.

Rep 1st to 8th rows for Cable Pat until work from beg measures approx 79" [200.5 cm], ending on an 8th row of pat.

Next row: (RS). Knit, dec 3 sts evenly across row. 37 sts.

Knit 3 rows (garter st).
Cast off.



Key

□ = Knit on RS rows. Purl on WS rows

▣ = Purl on RS rows. Knit on WS rows.

▤ = C2B

▥ = C2F

▧ = Cr4B

▨ = Cr4F

▩ = Tw4B

▪ = Tw4F

▬ = Tw2R

