



MATERIALS

Patons® Classic Wool Worsted™ (3.5 oz/100 g; 210 yds/192 m)

Main Color (MC) Dark Grey Mix (00225) **2 balls**

Contrast A Winter White (00201) **1 ball**

Size U.S. 7 (4.5 mm) knitting needles **or size needed to obtain gauge.**

ABBREVIATIONS: www.yarnspirations.com/abbreviations

Approx = Approximately

K = Knit

P = Purl

Pat = Pattern

Rep = Repeat

RS = Right side

St(s) = Stitch(es)

WS = Wrong side



INTERMEDIATE

MEASUREMENTS

Approx 8" x 51½" [20.5 x 131 cm].

GAUGE

20 sts and 26 rows = 4" [10 cm] in stocking st.

INSTRUCTIONS

Note: When working from chart, wind small balls of colors to be used, one for each separate area of color in the design. Start new colors at appropriate points. To change colors, twist the two colors around each other where they meet, on WS, to avoid a hole.

With MC cast on 41 sts.

1st row: (RS). K1. *P1. K1. Rep from * to end of row.

2nd row: K1. *K1. P1. Rep from * to last 2 sts. K2.

3rd row: (K1. P1) twice. Knit to last 4 sts. (P1. K1) twice.

4th row: K2. P1. K1. Purl to last 4 sts. K1. P1. K2.

5th row: With MC, (K1. P1) twice. K7. Knit 1st row of Chart across next 19 sts. With MC, K7. (P1. K1) twice.

6th row: With MC, K2. P1. K1. P7. Purl 2nd row of Chart across next 19 sts. With MC, P7. K1. P1. K2. Chart is now in position. Keeping 4 sts at each side in rib pat as established, work Chart to end of chart.

Chart is shown on Page 2.

Rep 3rd to 38th rows of Chart, 8 times more. Break A.

Next row: (RS). With MC, (K1. P1) twice. Knit to last 4 sts. (P1. K1) twice.

Next row: K2. P1. K1. Purl to last 4 sts. K1. P1. K2.

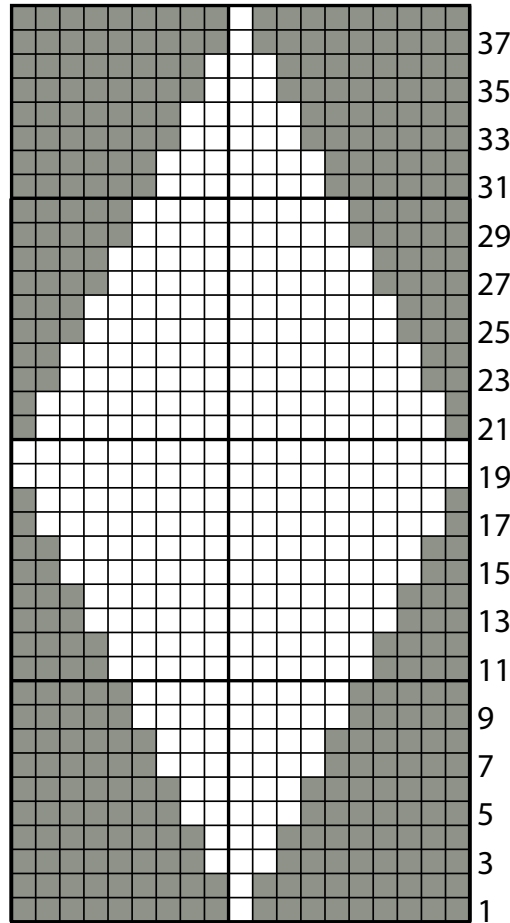
Next row: K1. *P1. K1. Rep from * to end of row.

Next row: K1. *K1. P1. Rep from * to last 2 sts. K2.

Cast off in pat.



Chart



Start Here

Key

- = Main Color (MC)
- = Contrast A