



Katherine Poole-Fournier  
*Designer*



KNIT | SKILL LEVEL: **INTERMEDIATE**

## ABBREVIATIONS

**Alt** = Alternate(ing)

**Beg** = Beginning

**BrDecR** = (Worked over 3 stitches)

Slip next stitch knit-wise with yarn at back of work. Knit next stitch.

Pass slipped stitch over just knit stitch and move stitch to left-hand needle. Pass second stitch on

left-hand needle over first stitch. Move stitch to right hand needle.

2 stitches decreased. (See photos on page 4)

**BrK1** = Brioche knit stitch. Knit the next stitch together with accompanying yarn over. (See photos on page 3).

**BrP1** = Brioche purl stitch. Purl the next stitch together with accompanying yarn over. (See photos on page 3).

**Cont** = Continue(ity)

**K** = Knit

**K1tbl** = Knit next stitch through back loop

**K2tog** = Knit next 2 stitches together

**Pat** = Pattern

**Rem** = Remain(ing)

**Rnd(s)** = Round(s)

**Sl1K** = Slip next st knitwise

**Sl1yo** = Slip next stitch purl-wise with yarn in front of work, bringing yarn over needle (and over slipped st) to back of work. Yarn is in place to work a knit stitch. If Sl1yo precedes a purl stitch, bring yarn under needle to front of work to maintain yo before working purl stitch. (See photos on page 3).

**P1tbl** = Purl next stitch through back loop

**St(s)** = Stitch(es)

## MATERIALS

**Patons® Inspired™** (5.3 oz/150 g; 222 yds/203 m)

**Contrast A** Rich Teal (92023) **1 ball or 125 yds/114 m**

**Contrast B** Fuchsia Tourmaline (92011) **1 ball or 90 yds/82 m**

Size U.S. 10 [6 mm] Susan Bates® circular knitting needles 16" [40.5 cm] long. Set of 4 size U.S. 10 (6 mm) Susan Bates® double-pointed knitting needles **or size needed to obtain gauge.** Susan Bates® stitch marker. Susan Bates® yarn needle.



## SIZE

One size to fit average Adult.

## GAUGES

12 sts and 32 rows = 4" [10 cm] in brioche pat on smaller needles.  
13 sts and 20 rows = 4" [10 cm] in twisted rib pat on larger needles.

## INSTRUCTIONS

**Note:** The wrap (yarn over) created by Sl1yo **does not** count as a separate stitch and should be treated as one stitch along with slipped stitch it accompanies.

## HAT

With A and larger circular needle, cast on 64 sts. Join in rnd, placing marker on first st.

**1st to 8th rnds:** \*K1tbl. P1tbl. Rep from \* around.

**Set up Brioche Pat: 1st rnd:** With A, \*K1. Sl1yo. Rep from \* around.  
**2nd rnd:** With B, \*Sl1yo. BrP1. Rep from \* around.

Proceed in Brioche Cable Pat as follows, noting that all odd-numbered rows are worked in A, and all even-numbered rows are worked in B. (see *Chart I on page 5*)

**1st rnd:** \*BrK1. Sl1yo. BrDecR. Sl1yo. (BrK1. Sl1yo) 5 times. Rep from \* around. 56 sts.

**2nd rnd:** \*Sl1yo. BrP1. Rep from \* around.

**3rd rnd:** \*BrK1. Sl1yo. Rep from \* around.

**4th rnd:** As 2nd rnd.

**5th rnd:** \*BrDecR. Sl1yo. (BrK1. yo. BrK1) all in next st. Sl1yo. (BrK1. Sl1yo) 4 times. Rep from \* around.

**6th rnd:** \*Sl1yo. BrP1. Sl1yo. P1. (Sl1yo. BrP1) 5 times. Rep from \* around.

**7th rnd:** As 3rd rnd.

**8th rnd:** As 2nd rnd.

**9th rnd:** \*BrK1. Sl1yo. (BrK1. yo. BrK1) all in next st. Sl1yo. (BrK1. Sl1yo) 5 times. Rep from \* around. 64 sts.

**10th rnd:** \*Sl1yo. BrP1. Sl1yo. P1. (Sl1yo. BrP1) 6 times. Rep from \* around.

**11th rnd:** As 3rd rnd.

**12th rnd:** As 2nd rnd.

**13th rnd:** \*(BrK1. Sl1yo) 5 times. BrDecR. Sl1yo. BrK1. Sl1yo. Rep from \* around. 56 sts.

**14th rnd:** As 2nd rnd.

**15th rnd:** As 3rd rnd.

**16th rnd:** As 2nd rnd.

**17th rnd:** \*(BrK1. Sl1yo) 4 times. BrDecR. Sl1yo. (BrK1. yo. BrK1) all in next st. Sl1yo. BrK1. Sl1yo. Rep from \* around.

**18th rnd:** \*(Sl1yo. BrP1) 5 times. Sl1yo. P1. Sl1yo. BrP1. Rep from \* around.

**19th rnd:** As 3rd rnd.

**20th rnd:** As 2nd rnd.

**21st rnd:** \*(BrK1. Sl1yo) 5 times. (BrK1. yo. BrK1) all in next st. Sl1yo. BrK1. Sl1yo. Rep from \* around. 64 sts.

**22nd rnd:** \*(Sl1yo. BrP1) 5 times. Sl1yo. P1. (Sl1yo. BrP1) twice. Rep from \* around.

**23rd rnd:** As 3rd rnd.

**24th rnd:** As 2nd rnd.

These 24 rnds form Brioche Cable Pat.

Rep 1st to 22nd rnds of Brioche Cable Pat once more.

**Note:** Change to set of 4 smaller needles during crown shaping as necessary.

**Shape Crown:** (see *Chart II on page 5*)

**1st rnd:** \*BrK1. Sl1yo. Rep from \* around.

**2nd and alt rnds:** With E, \*Sl1yo. BrP1. Rep from \* around.

**3rd rnd:** \*BrK1. Sl1yo. BrDecR. Sl1yo. (BrK1. Sl1yo) 5 times. Rep from \* around. 56 sts.

**5th rnd:** \*BrDecR. Sl1yo. (BrK1. Sl1yo) 5 times. Rep from \* around. 48 sts.

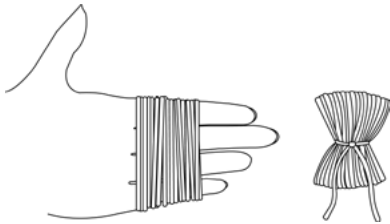
**7th rnd:** \*BrDecR. Sl1yo. (BrK1. Sl1yo) 4 times. Rep from \* around. 40 sts.

**9th rnd:** \*(BrK1. Sl1yo) twice. BrDecR. Sl1yo. BrK1. Sl1yo. Rep from \* around. 32 sts.

**11th rnd:** \*BrK1. Sl1yo. BrDecR. Sl1yo. BrK1. Sl1yo. Rep from \* around. 24 sts.

**12th rnd:** As 2nd rnd. Break yarn, leaving a long end. Draw end tightly through rem 24 sts and fasten securely.

**Pompom:** Wind A and B held together around 4 fingers approx 60 times. Remove from fingers and tie tightly in center. Cut through each side of loops. Trim to a smooth round shape. Sew pompom to top of Hat.



**Sl1yo** = Slip next stitch purl-wise with yarn in front of work, bringing yarn over needle (and over slipped stitch) to back of work. Yarn is in place to work a BrK1 stitch. If Sl1yo precedes a BrP1 stitch, bring yarn under needle to front of work to maintain yo before working BrP1 stitch.



**BrK1** = Knit next stitch together with accompanying yarn over.



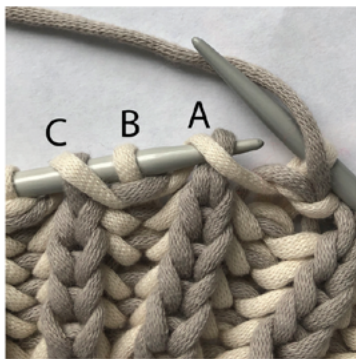
**BrP1** = Purl next stitch together with accompanying yarn over.



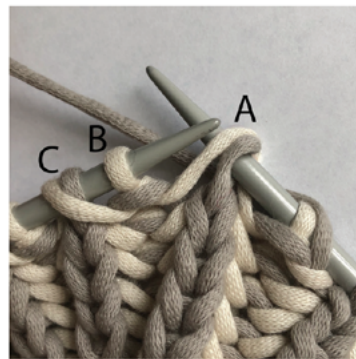


## BRIOCHE RIGHT DECREASE

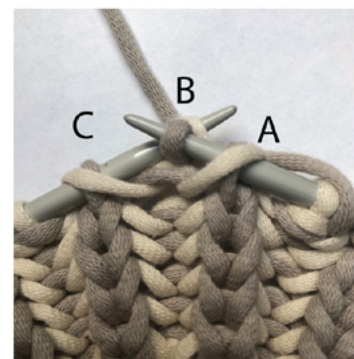
**BrDecR** = Worked over 3 stitches (A, B, C).



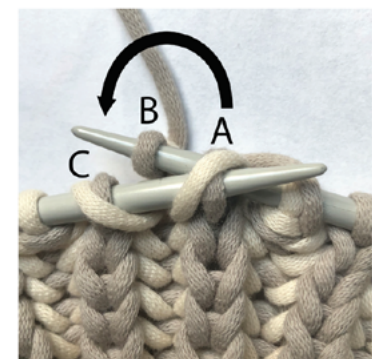
**1)** Slip next stitch (A) knit-wise with yarn at back of work (Sl1yo).



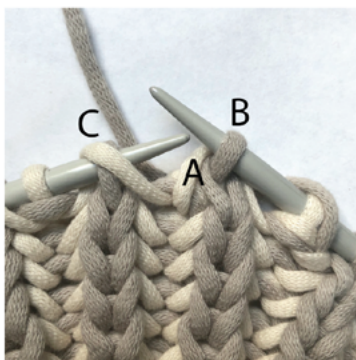
**3)** Knit next stitch (B).



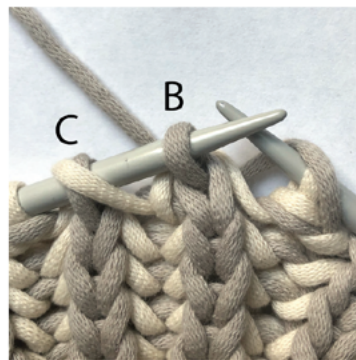
**4a)** Pass slipped stitch (A) over stitch just knit (B)...



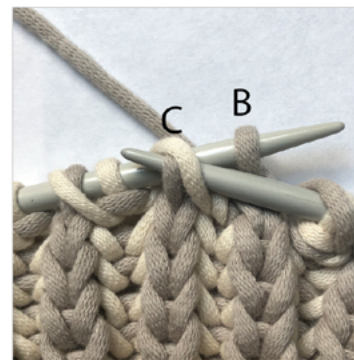
**4b)** ...



**5)** ... and move stitch to left-hand needle.



**6)** Pass second stitch on left-hand needle (C) over first stitch (B).



**7)** Move stitch to right-hand needle. 2 stitches decreased.



Chart I: Brioche Cable

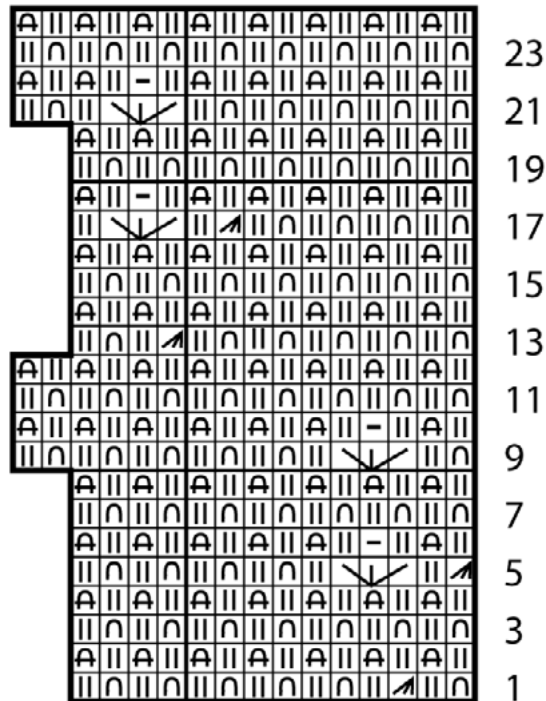
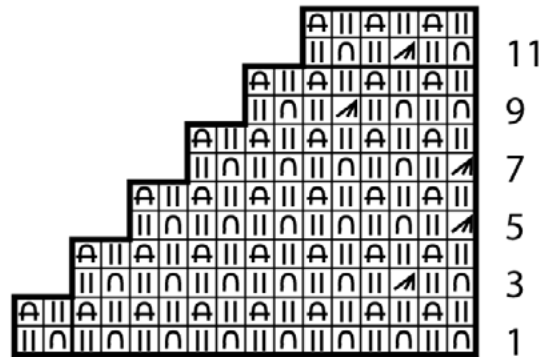

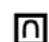
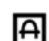

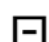



Chart II: Crown Shaping



Key

-  = BrDecR
-  = BrK1
-  = BrK1. yo. BrK1.
-  = BrP1
-  = Knit
-  = Purl
-  = Sl1yo