



KNIT | SKILL LEVEL: INTERMEDIATE

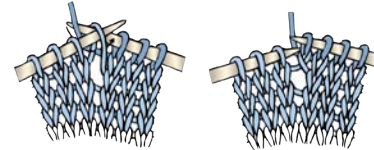
ABBREVIATIONS

Approx = Approximate(ly)

K = Knit

K2tog = Knit next 2 stitches together

M1 = Make 1 stitch by picking up horizontal loop lying before next stitch and knitting into back of loop



P = Purl

Pat = Pattern

Rep = Repeat

Rnd(s) = Round(s)

Ssk = Slip next 2 stitches knitwise one at a time. Pass them back onto left-hand needle, then knit through back loops together

St(s) = Stitch(es)

Tog = Together

WS = Wrong side

SIZE

One size to fit average man's head.

GAUGE

20 sts and 26 rows = 4" [10 cm] with larger needles in stocking st.

INSTRUCTIONS

Note: When working from chart, carry yarn not in use loosely across WS of work but never over more than 5 sts. When it must pass over more than 5 sts, weave it over and under color in use on next st at center point of sts it passes over. The colors are never twisted around one another.

With smaller circular needle and MC, cast on 100 sts. Join in rnd, placing marker on first st.

1st to 26th rnds: *K2. P2. Rep from * around.

Change to larger circular needle and proceed as follows:

Next rnd: With MC, (K25. M1) 4 times. 104 sts.

Next rnd: Knit 1st rnd of Chart I, reading rnd from right to left, noting 26-st rep will be worked 4 times. Chart I is now in position. Chart I is shown on page 2.

Cont working Chart I to end of chart.

MATERIALS

Patons® Classic Wool Worsted™ (3.5 oz/100 g; 210 yds/192 m)

Main Color (MC) Black (00226) **1 ball**

Contrast A Aran (00202) **1 ball**

Sizes U.S. 6 (4 mm) and U.S. 7 (4.5 mm) circular knitting needles 16" [40.5 cm] long. Set of four size U.S. 7 (4.5 mm) double-pointed knitting needles **or size needed to obtain gauge.** Stitch marker.

Shape top: Knit Chart II to end of chart, reading rnds from right to left and shaping top as follows:

Note: Change to set of doublepointed needles when necessary.

1st rnd: Knit 1st rnd of Chart II, reading rnd from right to left, noting 13-st rep will be worked 8 times.

2nd rnd: *ssk. Pat across 8 sts. K2tog. With MC, K1. Rep from * 7 times more. 88 sts.

3rd and 4th rnds: Knit in pat.

5th rnd: *ssk. Pat across 6 sts. K2tog. With MC, K1. Rep from * 7 times more. 72 sts.

6th and 7th rnds: Knit in pat.

8th rnd: *ssk. Pat across 4 sts. K2tog. With MC, K1. Rep from * 7 times more. 56 sts.

9th and 10th rnds: Knit in pat.

11th rnd: *ssk. Pat across 2 sts. K2tog. With MC, K1. Rep from * 7 times more. 40 sts.

12th and 13th rnds: Knit in pat.

14th rnd: *ssk. K2tog. With MC, K1. Rep from * 7 times more. 24 sts.

15th rnd: Knit in pat. Break yarn, leaving a long end. Draw end through rem sts tightly and fasten securely.

Pompom: Wind A around 4 fingers approx 100 times. Remove from fingers and tie tightly in center. Cut through each side of loops. Trim to smooth round shape. Attach Pompom to top of Hat as shown.

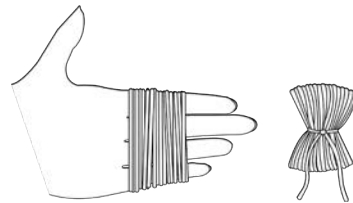
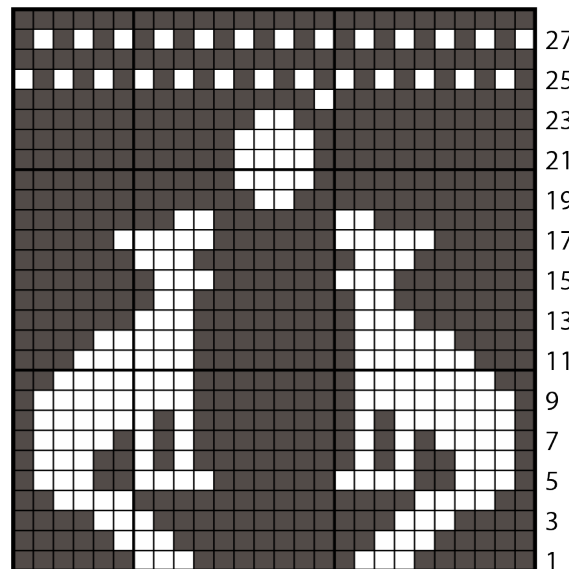


Chart I



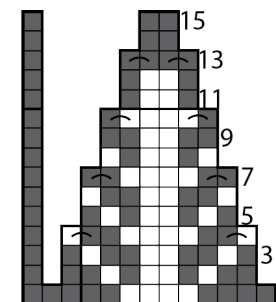
27
25
23
21
19
17
15
13
11
9
7
5
3
1

Start here

Key

- = MC
- = A

Chart II



Start here

Key

- = MC
- = A
- ⊠ = ssk or K2tog