



PATONS® ASTRA SNOWFLAKE HAT AND MITTENS (TO KNIT)

SIZES

Hat/Mittens/Fingerless Mittens: To fit kids 2/4 yrs (6/10 yrs-Lady).

MATERIALS

Patons® Astra (50 g/1.75 oz; 122 m/133 yds)

| | Hat | Mittens | Set |
|---|-----|---------|-----------|
| Main Color (MC) (08734 Griffin Blue) | 1 | 1 | 1 ball |
| Contrast A (08742 Hot Blue) | 1 | 1 | 2 ball(s) |
| Contrast B (08317 Hot Lilac) | 1 | 1 | 1 ball |
| Contrast C (02751 White) | 1 | 1 | 1 ball |

Note: Amounts are given for all sizes.

Fingerless Mittens are written for Lady's size only.

Sizes 3.75 mm (U.S. 5) and 4 mm (U.S. 6) knitting needles for Hat. Set of four sizes 3.5 mm (U.S. 4) and 3.75 mm (U.S. 5) double-pointed knitting needles for Mittens **or size needed to obtain tension**. Safety pin.

TENSIONS

Hat: 22 sts and 30 rows = 4" [10 cm] with 4 mm needles in stocking st.

Mittens/Fingerless Mittens: 24 sts and 32 rows = 4" [10 cm] with 3.75 mm needles in stocking st.

STITCH GLOSSARY

www.patonsyarns.com/abbreviations

Alt = Alternate(ing).

Beg = Beginning.

Cont = Continue(ity).

Dec = Decrease(ing).

Inc = Increase 1 stitch by knitting into front and back of next stitch.

K = Knit.

K2tog = Knit next 2 stitches together.

P = Purl.

Pat = Pattern.

Rem = Remaining.

Rep = Repeat.

Rnd(s) = Round(s).

RS = Right side.

Ssk = Slip next 2 stitches knitwise one at a time. Pass them back onto left-hand needle, then knit through back loops together.

St(s) = Stitch(es).

Tog = Together.

WS = Wrong side.

INSTRUCTIONS

The instructions are written for smallest size. If changes are necessary for larger sizes the instructions will be written thus (). Numbers for each size are shown in the same color throughout the pattern. When only one number is given in black, it applies to all sizes.

Note: When working from charts, carry yarn not in use loosely across WS of work but never over more than 5 sts. When it must pass over more than 5 sts, weave it over and under color in use on next st at center point of sts it passes over. The colors are never twisted around one another.

Stripe Pat

With MC, work 2 rows.

With A, work 2 rows.

With B, work 2 rows.

These 6 rows form Stripe Pat.

HAT

With 3.75 mm needles and A, cast on **95** (**101-115**) sts.

1st row: (WS). K1. *P1. K1. Rep from * to end of row.

2nd row: P1. *K1. P1. Rep from * to end of row.

Rep last 2 rows (K1. P1) ribbing for 3" [7.5 cm], ending with 1st row.



P.O. Box 40, Listowel ON N4W 3H3
P.O. Box 40, Listowel ON N4W 3H3

www.patonsyarns.com

Mittens/
Fingerless Mittens



INTERMEDIATE

Hat



INTERMEDIATE

SNOWFLAKE HAT AND MITTENS

Change to larger needles and beg with a purl row, work in stocking st for 5 rows, inc **3 (5-9)** sts evenly across last row. **98 (106-124)** sts.

Proceed as follows:

1st row: (RS). With MC, K1 (**5-2**). Work 1st row of Chart I, reading row from **right** to left, noting 24-st rep will be worked **4 (4-5)** times. With MC, K1 (**5-2**).

2nd row: With MC, P1 (**5-2**). Work 2nd row of Chart I, reading row from **left** to right. With MC, P1 (**5-2**).

Chart I (shown on page 3) is now in position.

Cont working Chart I to end of chart.

Beg with a purl row, cont even in Stripe Pat until work from last row of ribbing measures **4½ (5-5½)" [11.5 (12.5-14) cm]**, ending with a purl row.

Next row: (RS). Knit, dec **1 (1-3)** st(s) evenly across. **97 (105-121)** sts.

Keeping cont of Stripe Pat, proceed as follows:

Shape top: 1st row: (RS). *K10 (**11-13**). K2tog. Rep from * to last st. K1. **89 (97-113)** sts.

2nd and alt rows: Purl.

3rd row: *K9 (**10-12**). K2tog. Rep from * to last st. K1. **81 (89-105)** sts.

5th row: *K8 (**9-11**). K2tog. Rep from * to last st. K1. **73 (81-97)** sts.

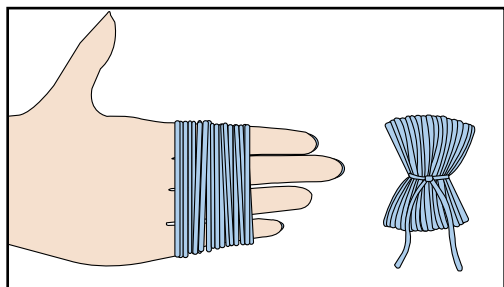
7th row: *K7 (**8-10**). K2tog. Rep from * to last st. K1. **65 (73-89)** sts.

8th row: Purl.

Cont in same manner, dec 8 sts on next and every following alt row as before to **17 (25-25)** sts. Break yarn leaving a long end. Draw end through rem sts tightly and fasten securely. Sew center back seam, reversing 2" [5 cm] at bottom for turn back.

Make pom-pom: Wind A and C around 4 fingers approx 90 times. Remove from fingers and tie tightly in center. Cut through each side of loops. Trim to a smooth round shape.

Attach to top of Hat.



MITTENS

Right Mitten: **With A and set of 4 smaller needles, cast on **32 (36-40)** sts. Divide onto 3 needles: **10 (12-14)** sts on 1st needle, **11 (12-13)** sts on 2nd and 3rd needles. Join in rnd, placing a marker on first st.

1st rnd: *K1. P1. Rep from * around.

Rep last rnd of (K1. P1) ribbing once more.

With C, rep last rnd twice more.

Rep last 4 rnds **1 (2-2)** time(s) more.

With MC, rep last rnd **1 (2-3)** time(s), inc 2 sts evenly across last rnd. **34 (38-42)** sts.**

Change to set of 4 larger needles and proceed as follows:

Knit to **13th (15th-24th)** rnds of Chart II, reading rnds from **right** to left. Chart II shown on page **4 (4-5)**.

Thumb opening: 1st rnd: Pat **26 (29-32)** sts. Slip last **6 (7-8)** sts onto a safety pin. Pat to end of rnd.

2nd rnd: Pat **20 (22-24)** sts. **Turn.** Cast on **6 (7-8)** sts. **Turn.** Pat to end of rnd.

***Cont even in pat until row **27 (32-41)** of Chart II has been completed. Keeping cont of Stripe Pat, proceed as follows:

Shape top: 1st rnd: With appropriate color, *K1. ssk. K11 (**13-15**). K2tog. K1. Rep from * once more.

2nd and alt rnds: Knit.

3rd rnd: *K1. ssk. K9 (**11-13**). K2tog. K1. Rep from * once more.

5th rnd: *K1. ssk. K7 (**9-11**). K2tog. K1. Rep from * once more.

7th rnd: *K1. ssk. K5 (**7-9**). K2tog. K1. Rep from * once more.

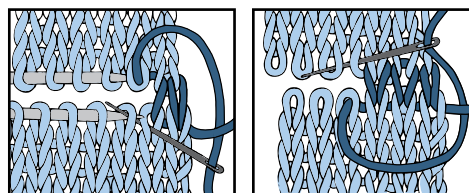
8th rnd: Knit.

Sizes 6/10 and Lady's only: 9th rnd: *K1. ssk. K(**5-7**). K2tog. K1. Rep from * once more.

10th rnd: Knit.

All sizes: Graft 2 sets of **9 (9-11)** sts tog across top edge.

Grafting Diagram



Make thumb: With MC only, K6 (**7-8**) from safety pin for thumb. Pick up and knit **6 (7-8)** sts at base of thumb. Divide these **12 (14-16)** sts onto 3 needles. Join in rnd, placing a marker on first st.

Knit **11 (15-20)** rnds even.

Next rnd: (K2. K2tog) **3 (3-4)** times. (K2tog) **0 (1-0)** time. **9 (10-12)** sts.

Next rnd: (K2tog) **4 (5-6)** times. K1 (**0-0**). Break yarn. Thread end through rem **5 (5-6)** sts. Draw up and fasten securely.***

Left Mitten: Work from ** to ** as given for Right Mitten.

Change to larger needles and proceed as follows:

Knit 1st to **13th (18th-24th)** rnds of Chart II, reading rnds from left to right.

Thumb opening: 1st rnd: Pat **15 (17-19)** sts. Slip last **6 (7-8)** sts onto a safety pin. Pat to end of rnd.

2nd rnd: Pat **9 (10-11)** sts. **Turn.** Cast on **6 (7-8)** sts. **Turn.** Pat to end of rnd.

Work from *** to *** as given for Right Mitten.



... a part of your life.
P.O. Box 40, Listowel ON N4W 3H3
P.O. Box 40, Listowel ON N4W 3H3

www.patonsyarns.com

Mittens/
Fingerless Mittens



INTERMEDIATE

Hat



INTERMEDIATE

SNOWFLAKE HAT AND MITTENS

FINGERLESS MITTENS (Lady's size only).

Right Mitten: **With A and set of 4 smaller needles, cast on 40 sts. Divide onto 3 needles: (13, 13, 14). Join in rnd, placing a marker on first st.
1st rnd: *K1. P1. Rep from * around.
 Rep last rnd of (K1. P1) ribbing once more.
 With C, rep last rnd twice more.
 Rep last 4 rnds twice more.
 With MC, rep last rnd 3 times more.

Change to set of 4 larger needles and proceed as follows:
 Knit 1st to 20th rnds of Chart III, reading rnds from **right** to left.**
 Chart III is shown on page 5.

Thumb opening: 1st rnd: Pat 32 sts. Slip last 8 sts onto a safety pin. Pat to end of rnd.
2nd rnd: Pat 24 sts. **Turn.** Cast on 8 sts. **Turn.** Pat to end of rnd.
 ***Cont even to end of Chart III.
 Cont in Stripe Pat only, work 6 rnds even.

Proceed as follows:

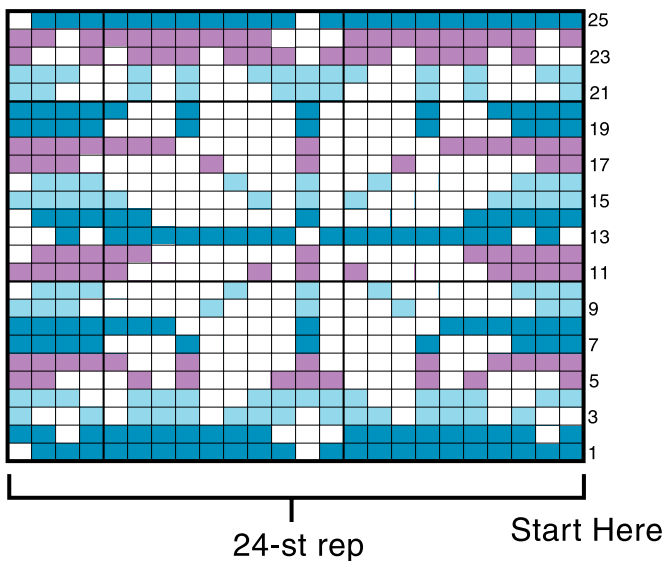
Next rnd: With A, knit.
Next rnd: Purl.

Make thumb: With MC, K8 from safety pin for thumb. Pick up and knit 8 sts at base of thumb. Divide these 16 sts onto 3 needles. Join in rnd, placing a marker on first st.
 Cont in Stripe Pat, knit 8 rnds even.
Next rnd: With A, knit.
Next rnd: Purl.
 Rep last 2 rnds once more, then rep 1st rnd once. Cast off purlwise.***

Left Mitten: Work from ** to ** as given for Right Mitten.

Thumb opening: 1st rnd: Pat 19 sts. Slip last 8 sts onto a safety pin. Pat to end of rnd.
2nd rnd: Pat 11 sts. **Turn.** Cast on 8 sts. **Turn.** Pat to end of rnd.
 Work from *** to *** as given for Right Mitten.

CHART I



KEY

- = MC
- = A
- = B
- = C



P.O. Box 40, Listowel ON N4W 3H3
 P.O. Box 40, Listowel ON N4W 3H3

www.patonsyarns.com

Mittens/
Fingerless Mittens



INTERMEDIATE

Hat



INTERMEDIATE

SNOWFLAKE HAT AND MITTENS

CHART II
Size 2/4 yrs

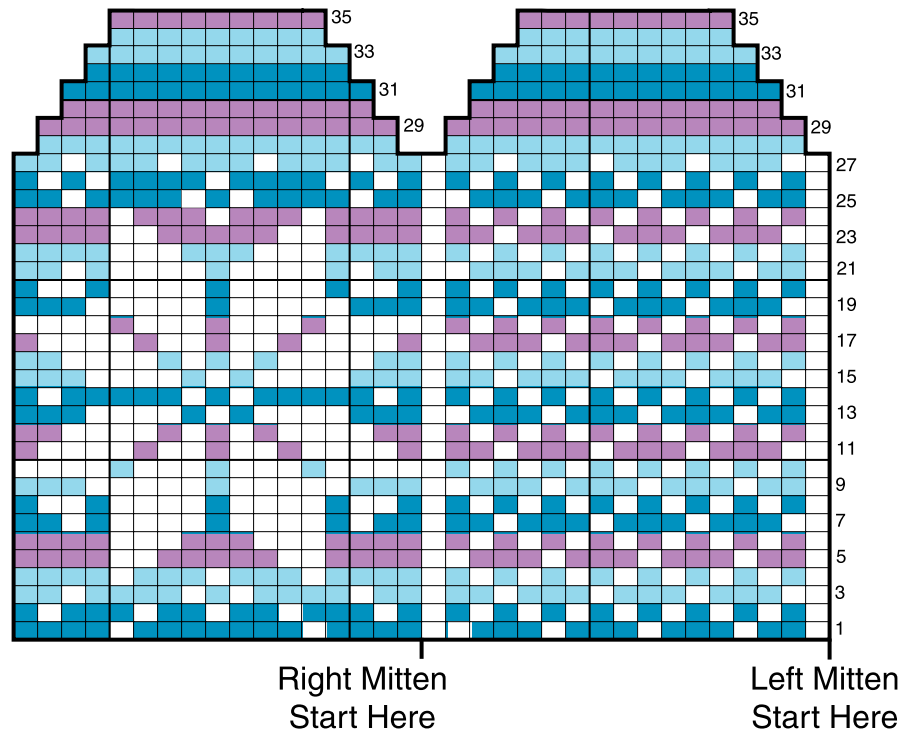
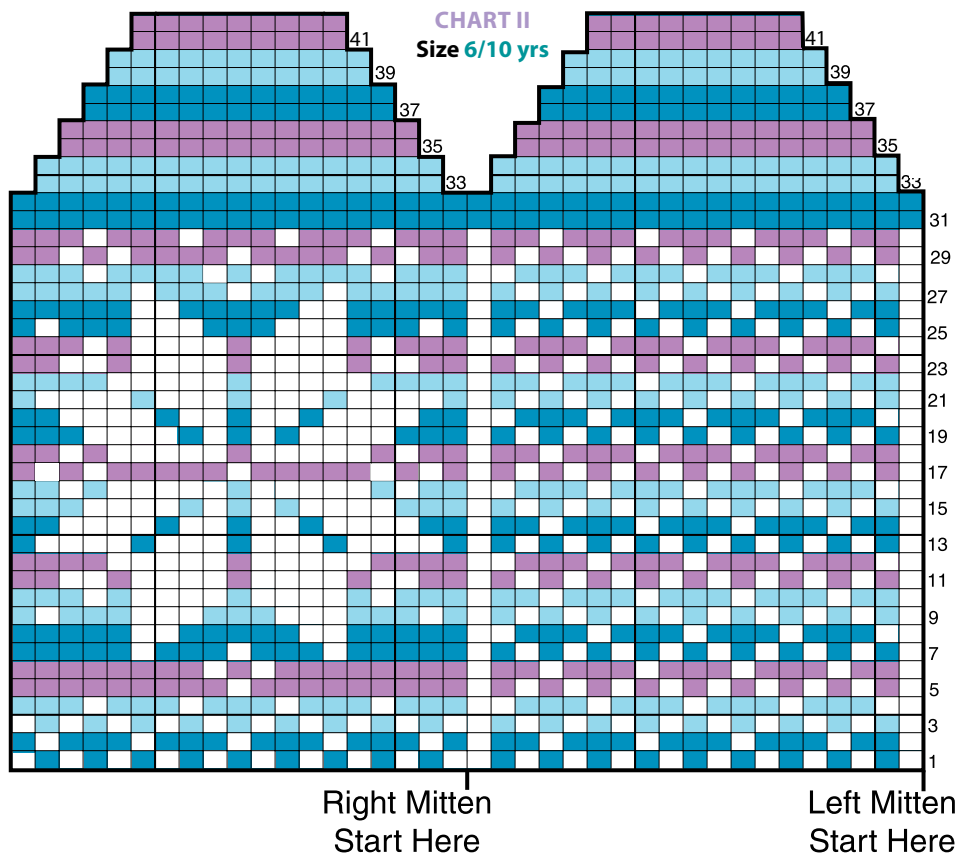


CHART II
Size 6/10 yrs



... a part of your life.
P.O. Box 40, Listowel ON N4W 3H3
P.O. Box 40, Listowel ON N4W 3H3

www.patonsyarns.com

Mittens/
Fingerless Mittens



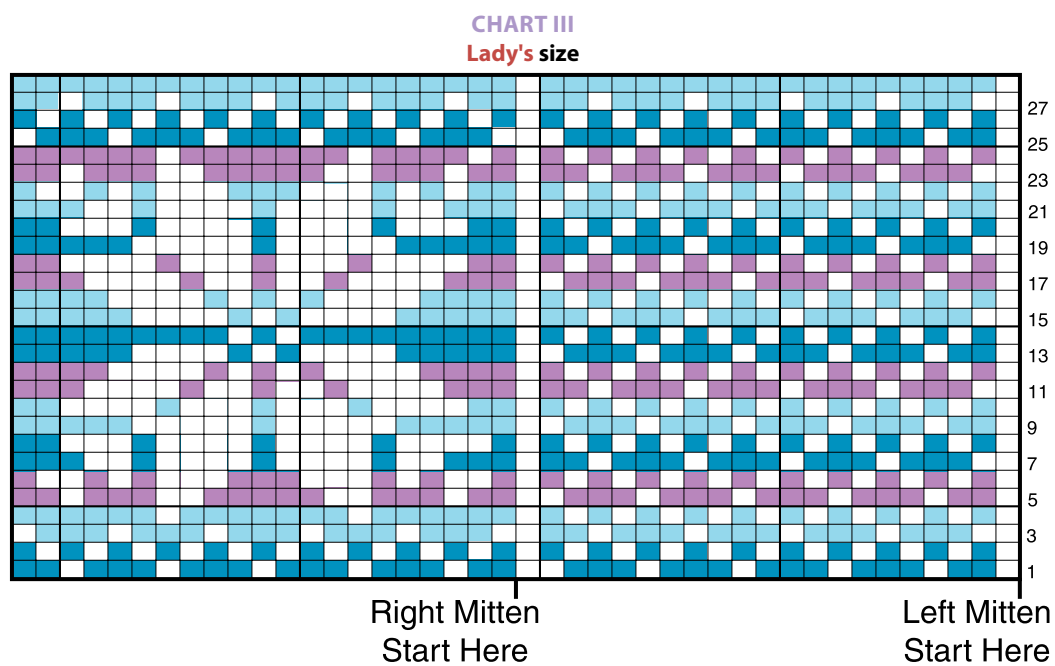
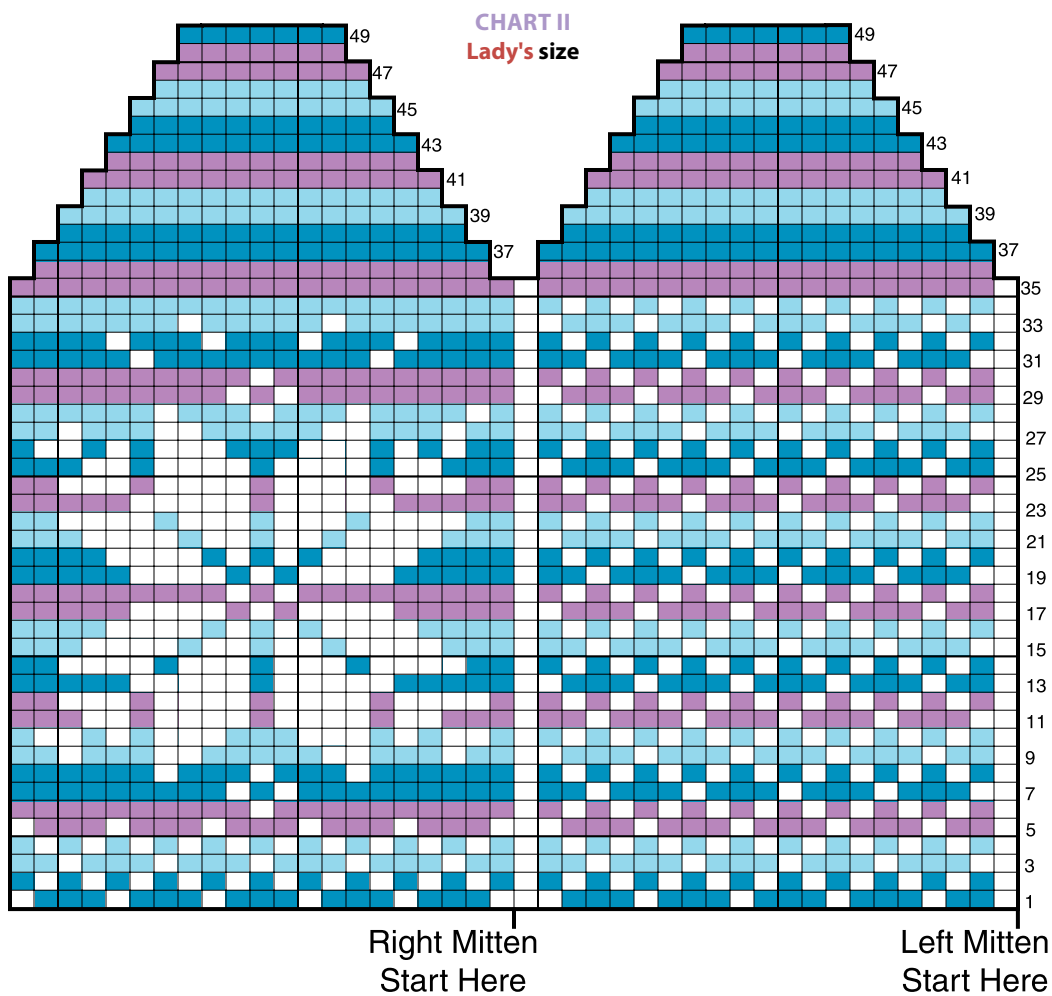
INTERMEDIATE

Hat



INTERMEDIATE

SNOWFLAKE HAT AND MITTENS



... a part of your life.
P.O. Box 40, Listowel ON N4W 3H3
P.O. Box 40, Listowel ON N4W 3H3

www.patonsyarns.com

Mittens/
Fingerless Mittens



INTERMEDIATE
SNOWFLAKE HAT AND MITTENS

Hat



INTERMEDIATE