



KNIT | SKILL LEVEL: INTERMEDIATE

ABBREVIATIONS

Alt = Alternate(ing)

Approx = Approximately

Beg = Beginning

Cont = Continue(ity)

Dec = Decreasing

Inc = Increasing

K = Knit

K2(3)tog = Knit next 2 (3) stitches together

Kfb = Increase 1 stitch by knitting into front and back of next stitch

M1 = Make 1 stitch by picking up horizontal loop lying before next stitch and knitting into back of loop

P = Purl

P2(3)tog = Purl next 2(3) stitches together

P2togtbl = Purl next 2 stitches together through back loops

PM = Place marker

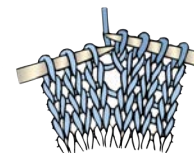
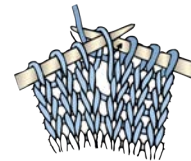
Rem = Remaining

RS = Right side

Ssk = Slip next 2 stitches knitwise one at a time. Pass them back onto left-hand needle, then knit through back loops together

St(s) = Stitch(es)

WS = Wrong side



MATERIALS

Patons® Canadiana™ (3.5 oz/100 g; 205 yds/187 m)

Main Color MC Purple Glow (10753) **2 balls**

Contrast A Grape Jelly (10307) **1 ball**

Contrast B Winter White (10006) **1 ball**

Contrast C Black (10040) **1 ball**

Size U.S. 6 (4 mm) knitting needles **or size needed to obtain gauge.**
Stuffing. Yarn needle.

MEASUREMENT

Approx 20" [51 cm] high.

GAUGE

21 sts and 27 rows = 4" [10 cm] in stocking st.

INSTRUCTIONS

Note: When working with more than 1 color within a row, wind small balls of the colors to be used, one for each separate area of color in the design. Start new colors at appropriate points. To change colors, twist the two colors around each other where they meet, on WS, to avoid a hole.

Left Leg

****Sole of Foot:** With A, cast on 5 sts.

1st row: (RS). Knit.

Cont in garter st (knit every row), inc 1 st at each end of next 3 rows, then on following alt rows twice. 15 sts.

Cont in garter st until work from beg measures approx 3¼" [8.5 cm]. Break A. Join B.

Proceed as follows:

1st row: (RS). With B, knit.

2nd row: Purl.

Cont in stocking st, dec 1 st at each end of next row and following alt rows twice. 9 sts.

Dec 1 st at each end of next 2 rows. 5 sts.

Cast off.

Top of Foot: With MC, cast on 23 sts. With B, cast on 28 sts. With MC, cast on 23 sts. 74 sts.

1st row: (RS). With MC, K23. With B, K28. With MC, K23.

2nd row: With MC, P23. With B, P28. With MC, P23.

Shape toes: 3rd row: (RS). With MC, K23. *With B, K8. With MC, K2. Rep from * twice more. With MC, K21.

4th row: With MC, P23. *With B, P2tog. P4. P2togtbl. With MC, P2. Rep from * twice more. With MC, P21. 68 sts.

5th row: With MC, K23. *With B, K6. With MC, K2. Rep from * twice more. With MC, K21.

6th row: With MC, P23. *With B, P2tog. P2. P2togtbl. With MC, P2. Rep from * twice more. With MC, P21. 62 sts.

7th row: With MC, K21. (M1. K1) twice. * With B, ssk. K2tog. With MC, K1. M1. K1. Rep from * twice more. With MC, M1. K21. 62 sts. Break B. With MC only, starting with a purl row, work 7 rows stocking st.

Shape ankle: Next row: (RS). K17. K2tog. (K3tog) 9 times. K16. 43 sts. Work 3 rows even.

Next row: (RS). K7. *M1. K2. Rep from * to last 8 sts. M1. K8. 58 sts.** Cont even in stocking st for another 24 rows, ending on a knit row.

Shape thigh and tail opening: 1st row: (WS). Cast off 29 sts. PM on st left on needle after cast off. Purl to end of row of row. 29 sts.

2nd row: Cast off 3 sts. K2 (including st on needle after cast off). M1. K4. M1. K3. M1. Knit to end of row of row. 29 sts.

3rd and alt rows: Purl.

4th row: Cast off 2 sts. K4 (including st left on needle after cast off). M1. K6. M1. Knit to end of row of row. 29 sts.

6th row: Cast off 2 sts. K3 (including st on needle after cast off). M1. K3. M1. K4. M1. Knit to end of row. 30 sts.

Work 11 rows even, ending on a purl row.

Cast on 2 sts at beg of next and following alt row. 34 sts.

Next row: (WS). Cast off 2 sts. Purl to end of row. 32 sts.

Next row: Cast on 3 sts. Knit to end of row. 35 sts.

Cast off 6 sts at beg of next and every alt row until 5 sts rem. Cast off.

Right Leg

Work from ** to ** as given for Left Leg.

Work 23 rows in stocking st, ending with purl row.

Shape thigh and tail opening: 1st row: (RS). Cast off 29 sts. PM on st left on needle after cast off. Knit to end of row. 29 sts.

2nd row: Cast off 3 sts. P2 (including st on needle after cast off). M1. P4. M1. P3. M1. Purl to end of row. 29 sts.

3rd and alt rows: Knit.

4th row: Cast off 2 sts. P4 (including st on needle after cast off). M1. P6. M1. Purl to end of row. 29 sts.

6th row: Cast off 2 sts. P3 (including st on needle after cast off). M1. P3. M1. P4. M1. Purl to end of row. 30 sts.

Work 11 rows even, ending on a knit row.

Cast on 2 sts at beg of next and following alt row. 34 sts.

Next row: (RS). Cast off 2 sts. Knit to end of row. 32 sts.

Next row: Cast on 3 sts. Purl to end of row. 35 sts.

Cast off 6 sts beg of next and every alt row until 5 sts rem.

Purl 1 row. Cast off.

Tail

With MC, cast on 3 sts. With A, cast on 4 sts. With MC cast on 3 sts. 10 sts.

1st row: (RS). With MC, K3. With A K4. With MC K3.

2nd row: With MC P3. With A P4. With MC P3.

Rep last 2 rows twice more.

7th row: With MC, K2. M1. K1. With A, K1. M1. K2. M1. K1. With MC, K1. M1. K2. 14 sts.

Keeping colors in place, work 5 rows in stocking st.

Proceed in stocking st as follows:

13th row: (RS). With MC, K3. M1. K1. With A, K1. M1. K4. M1. K1. With MC, K1. M1. K3. 18 sts.

Work 3 rows even.

17th row: With MC, K5. With A (K2tog) 4 times. With MC K5. 14 sts. Work 1 row even.

19th row: With MC, K4. M1. K1. With A, Kfb. M1. (Kfb) twice. M1. Kfb. With MC, K1. M1. K4. 22 sts. Work 3 rows even.

23rd row: With MC, K5. M1. K1. With A, K1. M1. K8. M1. K1. With MC, K1. M1. K5. 26 sts.

Work 1 row even.

25th row: With MC, K7. With A, (K2tog) 6 times. With MC, K7. 20 sts. Work 1 row even.

27th row: With MC, K6. M1. K1. With A, Kfb. M1. (Kfb) 4 times. M1. Kfb. With MC, K1. M1. K6. 30 sts.

Work 3 rows even.

31st row: With MC, K7. M1. K1. With A, K1. M1. K12. M1. K1. With MC, K1. M1. K7. 34 sts.

Work 1 row even.

33rd row: With MC, K9. With A, (K2tog) 8 times. With MC, K9. 26 sts. Work 1 row even.

35th row: With MC, K8. M1. K1. With A, Kfb. M1. (Kfb) 6 times. M1. Kfb. With MC, K1. M1. K8. 38 sts.

Work 3 rows even.

39th row: With MC, K9. M1. K1. With A, K1. M1. K16. M1. K1. With MC, K1. M1. K9. 42 sts.

Work 1 row even.

41st row: With MC, K11. With A, (K2tog) 10 times. With MC, K11. 32 sts.

Work 1 row even.

43rd row: With MC, K10. M1. K1. With A, Kfb. M1. (Kfb) 8 times. M1. Kfb. With MC, K1. M1. K10. 46 sts.

Work 3 rows even.

47th row: With MC, K11. M1. K1. With A, K1. M1. K20. M1. K1. With MC, K1. M1. K11. 50 sts.

Work 1 row even.

49th row: With MC, K13. With A, (K2tog) 12 times. With MC, K13. 38 sts.

Work 1 row even.

51st row: With MC, K12. M1. K1. With A, Kfb. M1. (Kfb) 10 times. M1. Kfb. With MC, K1. M1. K12. 54 sts.

Work 1 row even.

53rd row: With MC, K13. M1. K1. With A, K1. M1. K24. M1. K1. With A, K1. M1. K13. 58 sts.

Work 1 row even.

55th row: With MC, K14. M1. K1. With A, K1. M1. K26. M1. K1. With MC, K1. M1. K14. 62 sts.

Work 1 row even.

57th row: With MC, K8. PM for Chart I between last 2 sts. K7. *M1. K1. With A, (K2tog) 15 times. With MC, K1. M1. Rep from * to * once more. 49 sts.

Work 1 row even.

59th row: With MC, K16. M1. K1. With A, (Kfb. M1) twice. (Kfb) 11 times. (M1. Kfb) twice. With MC, K1. M1. K16. 70 sts. Work 3 rows even.

Keeping colors correct, cast off 6 sts beg next 10 rows. Cast off rem 10 sts.

Gusset

With A, cast on 26 sts.

Beg with a knit row, work 2 rows stocking st.

Cont in stocking st, dec 1 st each end of next 9 rows, then on following alt row. 6 sts.

Work 3 rows even.

Next row: (RS). Kfb. Knit to last 2 sts. Kfb. K1.

Next row: Purl.

Inc 1 st at each end of next 5 rows, then on following alt rows 4 times. 26 sts.

Work 1 row even. PM at each end of last row.

Inc 1 st at each end of next and following alt rows twice, then on following 4th row.

Work 3 rows even. Leave rem 34 sts on a spare needle.

Sew Gusset to front of Thighs, matching top edges and matching markers on Gusset to markers on Legs. Sew rem of Gusset to cast off sts of Legs.

Upper Body

With RS facing and MC, pick up and knit 37 sts across top of shaped edge of left Thigh. with A, 34 sts across top of Gusset, with MC, 37 sts up shaped edge of right Thigh to top. 108 sts.

Next row: With MC, P30. With A, P47. With MC, P30.

Keeping colors in place, work 2 rows stocking st.

Proceed as follows:

1st row: (RS). With MC, K30. With A, K48. With MC, K30.

2nd and alt rows: Purl, keeping colors in place.

3rd row: With MC, K28. K2tog. With A, ssk. K44. K2tog. With MC, ssk. K28. 104 sts.

5th row: With MC, K29. With A, K1. (K2tog. K1) 15 times. With MC, K29. 89 sts.

7th row: With MC, K27. K2tog. With A, K3. (Kfb. K1) 13 times. K2. With MC, ssk. K27. 100 sts.

9th row: With MC, K28. With A, K44. With MC, K28.

11th row: With MC, K26. K2tog. With A, ssk. K40. K2tog. With MC, ssk. K26. 96 sts.

13th row: With MC, K27. With A, ssk. (K2tog. K1) 12 times. (K2tog) twice. With MC, K27. 81 sts.

15th row: With MC, K25. K2tog. With A, K1. (Kfb. K1) 13 times. With MC, ssk. K25. 92 sts.

17th row: With MC, K26. With A, K40. With MC, K26.

19th row: With MC, K24. K2tog. With A, ssk. K36. K2tog. With MC, ssk. K24. 88 sts.

21st row: With MC, K25. With A, K1. (K2tog. K1. K2tog) 7 times. K2. With MC, K25. 74 sts.

23rd row: With MC, K23. K2tog. With A, K3. *(Kfb) twice. K1. Rep from * 5 times more. K3. With MC, ssk. K23. 84 sts.

25th row: With MC, K24. With A, K36. With MC, K24.

27th row: With MC, K22. K2tog. With A, ssk. K32. K2tog. With MC, ssk. K22. 80 sts.

29th row: With MC, K10. K2tog. K9. K2tog. With A, (K2tog) 17 times. With MC. ssk. K9. ssk. K10. 59 sts.

31st row: With MC, K8. K2tog. K9. K2tog. With A, K2. (Kfb) 13 times. K2. With MC, ssk. K9. ssk. K8. 68 sts.

33rd row: With MC, K8. K2tog. K7. K2tog. With A, K30. With MC, ssk. K7. ssk. K8. 64 sts.

35th row: With MC, K8. K2tog. K5. K2tog. With A, K30. With MC, ssk. K5. ssk. K8. 60 sts.

37th row: With MC, K15. With A, (K2tog) 15 times. With MC, K15. 45 sts.

39th row: With MC, K15. With A, K2. (Kfb) 11 times. K2. With MC, K15. 56 sts.

41st and 43rd rows: With MC, K15. With A, K26. With MC, K15.

45th row: With MC, K15. With A, (K2tog) 13 times. With MC, K15. 43 sts.

47th row: With MC, K15. With A, (Kfb) 13 times. With MC, K15. 56 sts. Work 5 rows even.

Shape neck: Next row: (RS). Keeping colors in place, K28. Turn. Leave rem sts on a spare needle. Cont on these 28 sts as follows: Cast off 4 sts beg next row, then cast off 3 sts beg every following alt row until 15 sts rem.

Next row: (RS). K9. PM between last 2 sts for Chart I. K6. PM on last st for Head.

Work 5 rows even. Dec 1 st at end of next and every alt row until 9 sts rem, then at same edge on next 3 rows. 6 sts. Cast off.

With RS facing, rejoin A to rem sts. Cast off 4 sts. Keeping colors correct, knit to end of row. 24 sts. Work 1 row even.

Cast off 3 sts beg of next and every following alt row until 15 sts rem.

Work 1 row even.

Next row: K1. PM on last st for Head. K7. PM between last 2 sts for spots. K7.

Work 5 rows even.

Dec 1 st at beg of next and every alt row until 9 sts rem, then at same edge on next 3 rows. 6 sts. Cast off.

Fold Neck in half to form a tube. Sew back neck seam tog for 1¼" [3 cm] from top where sts were cast off.

Head

With RS of work facing and MC, pick up and knit 20 sts up right side of head from second marker and across cast off sts to back neck seam, then 20 sts across cast off sts and down left side of head to first marker. 40 sts.

Next row: (WS). Purl.

Beg with a knit row, work in stocking st and cast on 3 sts beg of next 6 rows, then cast on 4 sts at beg of following 2 rows. 66 sts.

Work 1 row even.

Next row: (WS). P21. PM on last st for Chart IV. P25. PM on last st for Chart V. P20.

Shape eyes: Next row: (RS). K27. *(Kfb) 4 times. K4. Rep from * once more. K23. 82 sts.

Next row: P26. PM on last st for Chart II. P31. PM on last st for Chart III. P25.

Work 5 rows even.

Next row: P27. *(P3tog) 4 times. P4. Rep from * once more. P23. 66 sts. Work 8 rows even.

Next row: K2tog. K2. *K2tog. K3. Rep from * to last 2 sts. K2tog. 52 sts. Work 9 rows even.

Next row: K12. K2tog. (K3tog) 8 times. K2tog. K12. 34 sts.

Next row: Purl.

Next row: (K3tog) 4 times. K2tog. K6. K2tog. (K3tog) 4 times. 16 sts.

Next row: Purl.

Cast off.

Arms (make 2 alike)

With B, cast on 7 sts and purl 1 row.

Next row: (RS). (Kfb) 7 times. 14 sts. Beg with a purl row, work 3 rows in stocking st. Break B.

With MC work 5 rows in stocking st.

Next row: (WS). P8. PM between last 2 sts. P6.

Work 4 rows even.

Inc 1 st at each end of next and every following 4th row until there are 22 sts.

Work 3 rows even.

Shape top: Cast off 4 sts beg of next 4 rows. Cast off rem 6 sts.

FINISHING

With C, work Chart I, duplicate st spots on each side of Neck and Tail, below markers.

With 2 strands of B and C, using markers for eyes on head as a guide, duplicate st eyes from Charts II and III.

With strands of B, using markers for teeth on head as a guide, duplicate st teeth from charts IV and V.

With C used double, duplicate st on either side of nose for nostrils as illustrated.

Secure a boll of stuffing into each eye with small stitches, to make them protrude.

Join under seam of head, then sew cast on sts of head to cast off sts of neck. Place center of cast off edge of nose to head seam and join seam at end of nose.

With C, embroider mouth in stem st as illustrated.

Join back seam of each leg. Sew soles of feet to base of legs, matching top part of soles to toes of legs.

Join tail seam. Sew tail in place all round tail opening.

Join neck and back seam, leaving an opening at base for stuffing. Stuff toy and sew opening closed.

Raised spots (make 12)

With C, cast on 7 sts.

Work in garter st (knit every row), dec 1 st each end of 3rd and 4th rows. Cast off rem 3 sts.

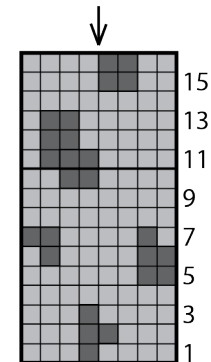
Sew cast on edge of spots to back of Toy, first to come ¾" [2 cm] from end of tail and rem spaced evenly between.

Sew arm seams. Sew cast on edges of arms, matching seam to center of cast on edge. Stuff arms lightly. Sew a tight running st through both thicknesses of arm from center of cast on edge to marker, forming 2 fingers.

Sew arms to each side of body as illustrated.

Chart I

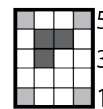
Marker



Key

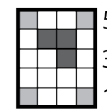
- = MC
- = B
- = C

Chart II



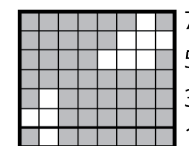
Marked st

Chart III



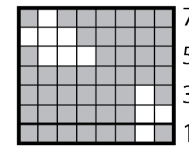
Marked st

Chart V



Marked st

Chart IV



Marked st