



PATONS® CLASSIC WOOL DK SUPERWASH™
CHILD'S V-NECK FAIR ISLE VEST (TO KNIT)

SIZES

To fit chest measurement

2	21"	[53.5 cm]
4	23"	[58.5 cm]
6	25"	[63.5 cm]
8	26½"	[67.5 cm]

Finished chest

2	24"	[61 cm]
4	26"	[66 cm]
6	28"	[71 cm]
8	30"	[76 cm]

MATERIALS

Patons® Classic Wool DK Superwash™
(50 g/1.75 oz; 114 m/125 yds)

Sizes **2 4 6 8**

Main Color (MC)

Mallard Teal (12203) **2 3 3 4 balls**

Contrast A Flagstone (12011) **1 1 1 1 ball**

Contrast B Pumpkin (12630) **1 1 1 1 ball**

Contrast C Mocha (12013) **1 1 2 2 ball(s)**

Contrast D Cork (12012) **1 1 2 2 ball(s)**

Sizes 3.75 mm (U.S. 5) and 4 mm (U.S. 6) circular knitting needles 16" [40 cm] long **or size needed to obtain tension.** Size 3.75 mm (U.S. 5) circular knitting needle 12" [30 cm] long. 1 stitch holder. Stitch marker.

TENSION

22 sts and 28 rows = 4" [10 cm] in stocking st with larger needles.

24 sts and 26 rows = 4" [10 cm] in Fair Isle Pat with larger needles.

STITCH GLOSSARY
www.patonsyarns.com/abbreviations

Beg = Beginning	P = Purl
Cont = Continue(ity)	Pat = Pattern
Dec = Decrease(ing)	P2tog = Purl next 2 stitches together
Inc(s) = Increase 1 stitch by knitting into front and back of next stitch	Rem = Remaining
K = Knit	Rep = Repeat
K2tog = Knit next 2 stitches together	Rnd(s) = Round(s)
M1 = Make 1 stitch by picking up horizontal loop lying before next stitch and knitting into back of loop	RS = Right side
	Ssk = Slip next 2 stitches knitwise one at a time. Pass them back onto left-hand needle, then knit through back loops together
	St(s) = Stitch(es)
	WS = Wrong side

INSTRUCTIONS

The instructions are written for smallest size. If changes are necessary for larger sizes the instructions will be written thus (). Numbers for each size are shown in the same color throughout the pattern. When only one number is given in black, it applies to all sizes.

Note: Body is worked in rnds in one piece to armholes, then Front and Back are worked back and forth across needle in rows.

BODY

With MC and smaller needle, cast on **136 (148-156-168) sts. Join in rnd, placing a marker on first st.

1st rnd: *K2. P2. Rep from * around. Rep last rnd (K2. P2) ribbing for **2 (2-2½-2½)" [5 (5-6-6) cm]**, inc **8 (8-12-12)** sts evenly around last rnd. **144 (156-168-180)** sts.

Change to larger needle and work Chart I (I-II-II) See Charts on Page 3. To end of chart, noting 6-st rep will be worked **24 (26-28-30)** times. Work Chart III until row 8 of chart is complete, noting chart will be repeated twice around.

Divide for armholes: Next row: With A, cast off 3 sts. Work chart across next **66 (72-78-84)** sts. Cast off 6 sts. Work chart across next **66 (72-78-84)** sts. Cast off last 3 sts.

Back: Keeping cont of chart, rejoin yarn and proceed back and forth in rows across needle on last **66 (72-78-84)** sts.

Next row: (WS). Purl.
Next row: K1. K2tog. Pat to last 3 sts. ssk. K1. Rep last 2 rows **3 (3-4-4)** times more. **58 (64-68-74)** sts.

Cont even from chart until row **44 (48-50-54)** of chart is complete.

Shape shoulders: Keeping cont of chart, cast off **6 (7-8-9)** sts beg next 2 rows, then **7 (8-9-10)** sts beg following 2 rows. Leave rem **32 (34-34-36)** sts on a st holder.

Front: With WS facing, rejoin yarn to rem **66 (72-78-84)** sts.

Keeping cont of chart, proceed back and forth in rows across needle as follows:

Next row: (WS). Purl.
Next row: K1. K2tog. Pat to last 3 sts. ssk. K1. Rep last 2 rows once more. **62 (68-74-80)** sts.
Next row: Purl.

Shape neck: Next row: (RS). K1. K2tog. Pat across **26 (29-32-35)** sts. K2tog (neck edge).

Turn. Leave rem sts on a spare needle.
Next row: P2tog. Pat to end of row.
Next row: K1. K2tog. Pat to last 2 sts. K2tog. **26 (29-32-35)** sts rem.

Sizes 6 and 8 only: Rep last 2 rows once more. **(29-32)** sts.

Next row: Purl.
Sizes 2 and 4 only: Next row: P2tog. Pat to end of row. **25 (28)** sts.

All sizes: Next row: (RS). Pat to last 2 sts. K2tog.

Next row: Purl. Rep last 2 rows **11 (12-11-12)** times more. **13 (15-17-19)** sts.

Cont even until row **44 (48-50-54)** of chart is complete.

Shape shoulder: Keeping cont of chart, cast off **6 (7-8-9)** sts beg next row. Work 1 row even. Cast off rem **7 (8-9-10)** sts.



P.O. Box 40, Listowel ON N4W 3H3

www.patonsyarns.com



With RS facing, rejoin yarn to rem sts. K2tog. Pat to last 3 sts. ssk. K1.

Next row: Pat to last 2 sts. P2tog.

Next row: K2tog. Pat to last 3 sts. ssk. K1. **26 (29-32-35)** sts rem.

Sizes 6 and 8 only: Rep last 2 rows once more. (29-32) sts.

Next row: Purl.

Sizes 2 and 4 only: Next row: Pat to last 2 sts. P2tog. **25 (28)** sts.

All sizes: Next row: (RS). K2tog. Pat to end of row.

Next row: Purl.

Rep last 2 rows **11 (12-11-12)** times more. **13 (15-17-19)** sts.

Cont even until row **45 (49-51-55)** of chart is complete.

Shape shoulder: Keeping cont of chart, cast off **6 (7-8-9)** sts beg next row. Work 1 row even. Cast off rem **7 (8-9-10)** sts.

FINISHING

Sew right shoulder seam.

V-neckband: With RS facing, MC and smaller needle, pick up and knit **34 (38-38-42)** sts down left front neck edge. M1 at center V (place marker on this st for center st). Pick up and knit **34 (38-38-42)** sts up right front neck edge. K**32 (34-34-36)** from back neck st holder inc **0 (2-2-0)** sts evenly across. **101 (113-113-121)** sts.

Do not join. Working back and forth across needle in rows, proceed as follows:

1st row: (WS). *P2. K2. Rep from * **15 (17-17-18)** times. P2tog. P1 (center st). P2tog. **K2. P2. Rep from ** to end of row.

2nd row: *K2. P2. Rep from * to 3 sts before center st. K1. P2tog. K1 (center st). P2tog. K1. Rib to end of row.

3rd row: *P2. K2. Rep from * to 2 sts before center st. K2tog. P1 (center st). K2tog. Rib to end of row.

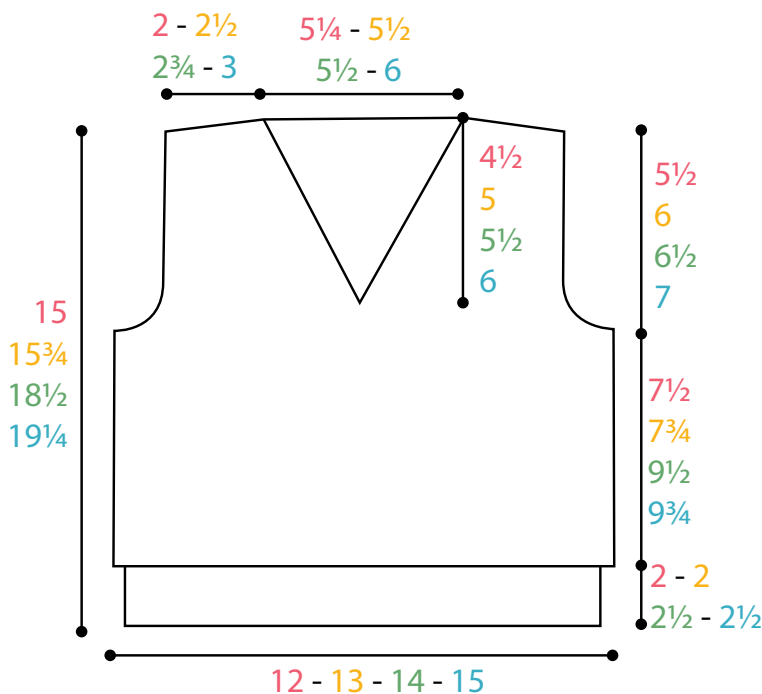
Rep last 2 rows twice more. Cast off in ribbing, dec as before.

Sew left shoulder and neckband seam.

Armbands: With RS facing, MC and 12" [30.5 cm] smaller needle, pick up and knit **80 (84-92-96)** sts around armhole edge. Join in rnd, placing a marker on first st.

1st rnd: *K2. P2. Rep from * around.

Rep last rnd (K2. P2) ribbing 6 times more. Cast off in ribbing.



Patons
Classic Wool
 DK SUPERWASH™
...a part of your life.

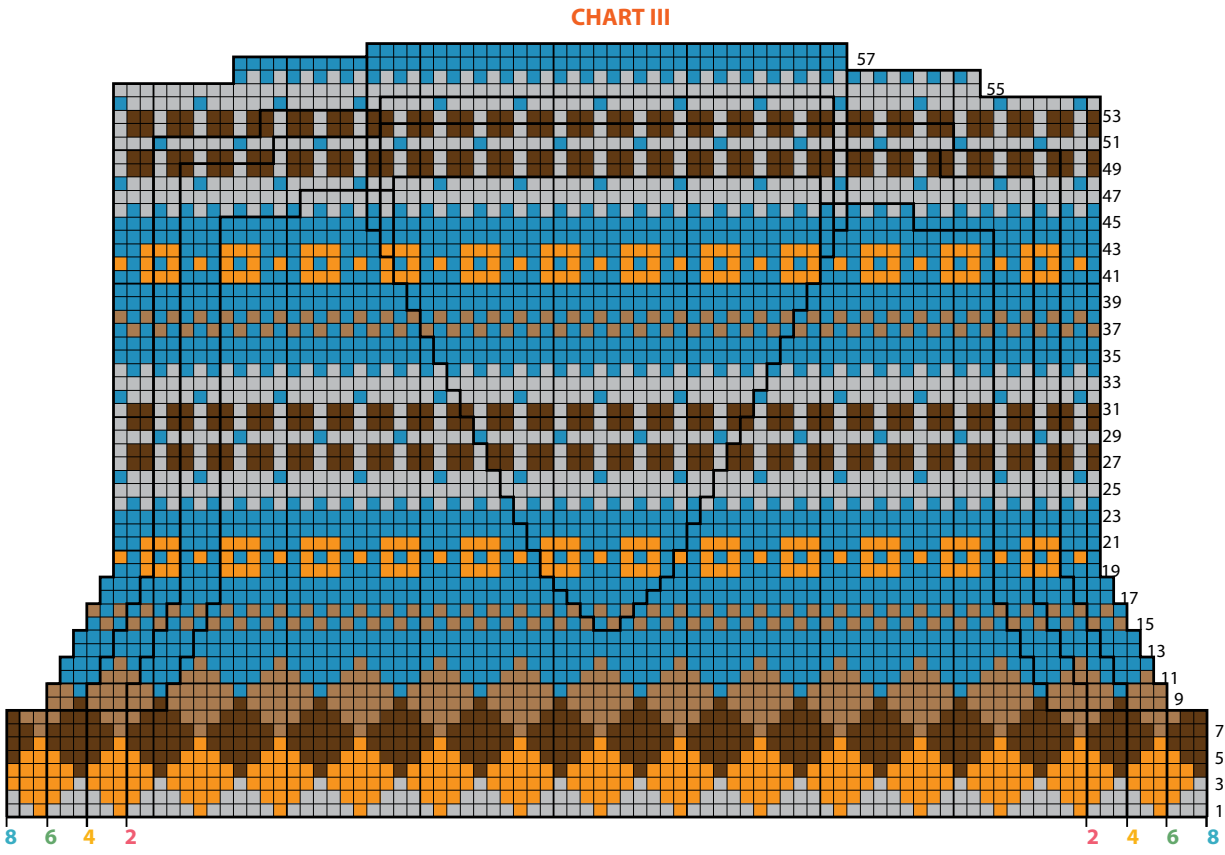
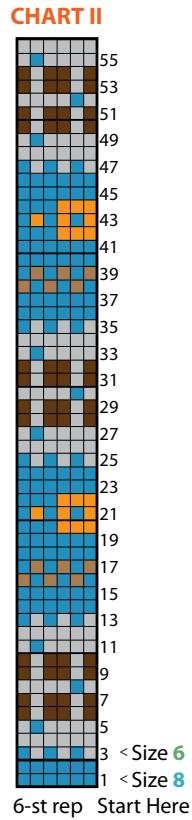
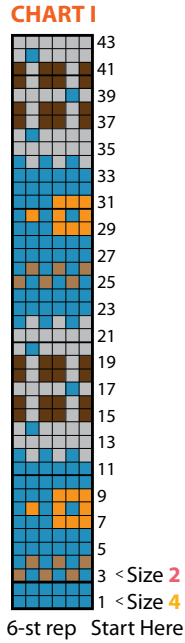
P.O. Box 40, Listowel ON N4W 3H3

www.patonsyarns.com



CHILD'S V-NECK FAIR ISLE VEST 2 of 3

- KEY**
- = Main Color (MC)
 - = Contrast A
 - = Contrast B
 - = Contrast C
 - = Contrast D



Patons
Classic Wool
 DK SUPERWASH™
...a part of your life.

P.O. Box 40, Listowel ON N4W 3H3

www.patonsyarns.com

CHILD'S V-NECK FAIR ISLE VEST 3 of 3

