



CABLES AND HEARTS CHILD'S PULLOVER

SIZES

Chest measurement

4	24	ins	[61	cm]
6	25	ins	[63.5	cm]
8	27	ins	[68.5	cm]
10	29	ins	[73.5	cm]

Finished chest

4	26	ins	[66	cm]
6	28	ins	[71	cm]
8	30	ins	[76	cm]
10	34	ins	[86.5	cm]

TENSION

18 sts and 24 rows = 4 ins [10 cm] in stocking st with larger needles

MATERIALS

Patons Classic Wool (100 g/3.5 oz)
or Patons Décor (100 g/3.5 oz)

Size 4 6 8 10
4 5 5 6 balls

Sizes 4 mm (U.S. 6) and 5 mm (U.S. 8) knitting needles or size needed to obtain tension. Cable needle.

ABBREVIATIONS

T3B = slip next st onto cable needle and leave at back of work. K2, P1 from cable needle.

T3F = slip next 2 sts onto cable needle and leave at front of work. P1, then K2 from cable needle.

MB = (K1, P1) twice into next st. **Turn.** P4. **Turn.** Sl2. K2tog. p2sso. Bobble complete.

C2B = knit into front of 2nd st on needle, then knit the first st slipping both sts off needle tog.

Sl Wrap K = bring yarn forward, slip next st onto right-hand needle, take yarn back, return slipped st to left-hand needle. **Turn.** Leave slipped st on what is now right-hand needle (see diagram on page 35).

Sl Wrap P = take yarn back, slip next st onto right-hand needle, bring yarn forward, return slipped st to left-hand needle. **Turn.** Leave slipped st on what is now right-hand needle.

INSTRUCTIONS

The instructions are written for smallest size. If changes are necessary for larger sizes, the instructions will be written thus: ().

PANEL PAT A (worked over 8 sts).

1st row: (RS). P2. MB. P1. T3B. P1.

2nd row: K2. P2. K4.

3rd row: P3. T3B. P2.

4th row: K3. P2. K3.

5th row: P2. T3B. P3.

6th row: K4. P2. K2.

7th row: P1. T3B. P4.

8th row: K5. P2. K1.

9th row: P1. T3F. P1. MB. P2.

10th row: K4. P2. K2.

11th row: P2. T3F. P3.

12th row: K3. P2. K3.

13th row: P3. T3F. P2.

14th row: K2. P2. K4.

15th row: P4. T3F. P1.

16th row: K1. P2. K5.

These 16 rows form Panel Pat A.

BACK

**With smaller needles cast on 68 (72-76-88) sts.

1st row: (RS). *K2. P2. Rep from * to end of row.

Rep last row until work from beg measures 2 ins [5 cm] ending on a 2nd row and inc 6 sts evenly across last row. 74 (78-82-94) sts.

Change to larger needles and proceed in pat as follows:

1st row: (RS). K2 (0-2-0). (P2. K2) 1 (2-2-4) time(s). Work 1st row of Chart, reading row from **right** to left. (P2. K2) 3 times. P2. Work 1st row of Panel Pat A. P2. (K2. P2) 3 times. Work 1st row of Chart. (K2. P2) 1 (2-2-4) time(s). K2 (0-2-0).

2nd row: P2 (0-2-0). (K2. P2) 1 (2-2-4) time(s). Work 2nd row of Chart, reading row from **left** to right. (K2. P2) 3 times. K2. Work 2nd row of Panel Pat A. K2. (P2. K2) 3 times. Work 2nd row of Chart. (P2. K2) 1 (2-2-4) time(s). P2 (0-2-0).



ABBREVIATIONS: www.patonsyarns.com/glossary

3rd row: P2 (0-2-0). (K2. P2) 1 (2-2-4) time(s). Work 3rd row of Chart. (P2. C2B) 3 times. P2. Work 3rd row of Panel Pat A. P2. (C2B. P2) 3 times. Work 3rd row of Chart. (P2. K2) 1 (2-2-4) time(s). P2 (0-2-0).

4th row: K2 (0-2-0). (P2. K2) 1 (2-2-4) time(s). Work 4th row of Chart. (K2. P2) 3 times. K2. Work 4th row of Panel Pat A. K2. (P2. K2) 3 times. Work 4th row of Chart. (K2. P2) 1 (2-2-4) time(s). K2 (0-2-0).

These 4 rows form pat.

Chart and Panel Pat A are now in position.**

Cont in pat keeping cont of Chart and Panel Pat A, until work from beg measures 16 (18-20-21) ins [40.5 (45.5-51-53.5) cm] ending with RS facing for next row.

Shoulder shaping: Cast off 6 (6-7-9) sts beg next 4 rows, then 6 (7-6-8) sts beg following 2 rows. Cast off rem 38 (40-42-42) sts.

FRONT

Work from ** to ** as given for Back.

Cont in pat keeping cont of Chart and Panel Pat A, until work from beg measures 14½ (16½ -18½ -19½) ins [37 (42-47-49.5) cm] ending with RS facing for next row.

Neck shaping: Next row: Pat across 31 (32-34-40) sts (neck edge). **Turn.** Leave rem sts on a spare needle.

Keeping cont of pat, dec 1 st at neck edge on next 13 (13-14-14) rows. 18 (19-20-26) sts.

Cont even in pat until work from beg measures same length as Back to beg of shoulder shaping ending with RS facing for next row.

Shoulder shaping: Cast off 6 (6-7-9) sts beg next and following alt row. Work 1 row even. Cast off rem 6 (7-6-8) sts. With RS of work facing, rejoin yarn and cast off 12 (14-14-14) sts from spare needle. Pat to end of row.

Keeping cont of pat, dec 1 st at neck edge on next 13 (13-14-14) rows. 18 (19-20-26) sts.

Cont even in pat until work from beg measures same length as Back to beg of shoulder shaping ending with WS facing for next row.

Shoulder shaping: Cast off 6 (6-7-9) sts beg next and following alt row. Work 1 row even. Cast off rem 6 (7-6-8) sts.

SLEEVES

With smaller needles cast on 40 (44-44-48) sts.

Work 2 ins [5 cm] in (K2. P2) ribbing as given for Back ending on a 2nd row and inc 12 (8-16-12) sts evenly across last row. 52 (52-60-60) sts.

Change to larger needles and proceed in pat as follows:

1st row: (K2. P2) 2 (2-3-3) times. (P2. K2) 3 times. P2. Work 1st row of Panel Pat A. P2. (K2. P2) 3 times. (P2. K2) 2 (2-3-3) times.

2nd row: (P2. K2) 2 (2-3-3) times. (K2. P2) 3 times. K2. Work 2nd row of Panel Pat A. K2. (P2. K2) 3 times. (K2. P2) 2 (2-3-3) times.

3rd row: (P2. K2) 2 (2-3-3) times. (P2. C2B) 3 times. P2. Work 3rd row of Panel Pat A. P2. (C2B. P2) 3 times. (K2. P2) 2 (2-3-3) times.

4th row: (K2. P2) 5 (5-6-6) times. K2. Work 4th row of Panel Pat A. K2. (P2. K2) 5 (5-6-6) times.

These 4 rows form pat. Panel Pat A is now in position.

Cont in pat keeping cont of Panel Pat A, inc 1 st each end of needle on next and following 4th rows to 70 (72-72-86) sts, then every following 6th row to 76 (80-84-90) sts, taking inc sts into side pat.

Cont even in pat until work from beg measures 10½ (12-14-15) ins [26.5 (30.5-35.5-39.5) cm] ending with RS facing for next row. Cast off.

Collar: With smaller needles, cast on 120 (124-132-132) sts.

Proceed in (K2. P2) ribbing as follows:

1st row: *K2. P2. Rep from * to end row.

2nd row: Rib to last 2 sts, work Sl Wrap K or Sl Wrap P on next st on needle and slip it back to left hand needle. **Turn.**

Rep last row (leaving 2 more sts unworked on every row) until 28 (28-32-32) sts are unworked on each end.

Turn.

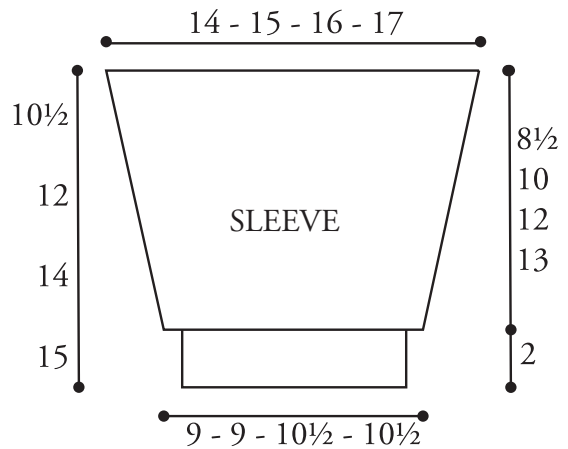
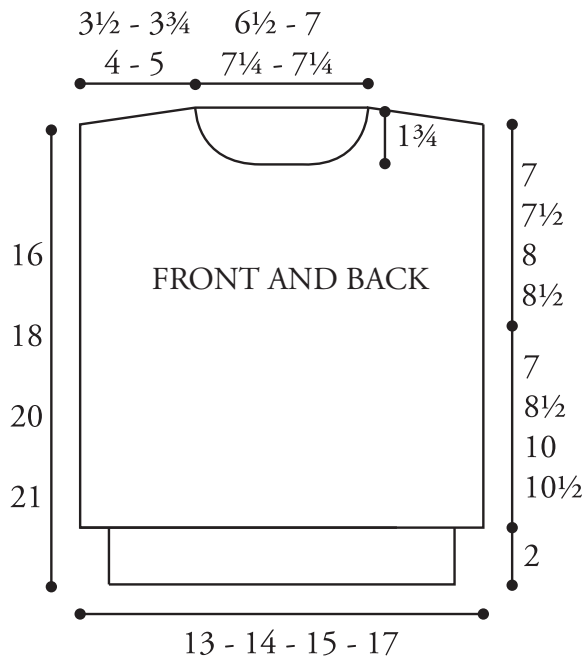
Next 2 rows: Rib across row, working K wrap tog or P wrap tog around wrapped sts.

Cast off in ribbing.

FINISHING

Pin pieces to measurements and cover with a damp cloth leaving to dry.

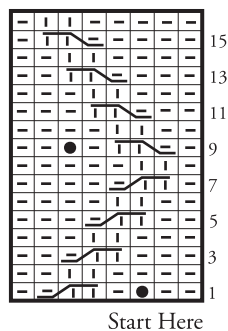
Sew shoulder seams. Place markers for Front and Back side edges 7 (7½-8-8½) ins [18 (19-20.5-21.5) cm] down from shoulders. Sew in sleeves between markers. Sew side and sleeve seams. Sew cast on edge of collar to neckline, leaving a 1½ inch [3 cm] overlap at front.



Key

- = Knit on RS rows and purl on WS rows.
- = Purl on RS rows and knit on WS rows.
- = T3F
- = T3B
- = MB

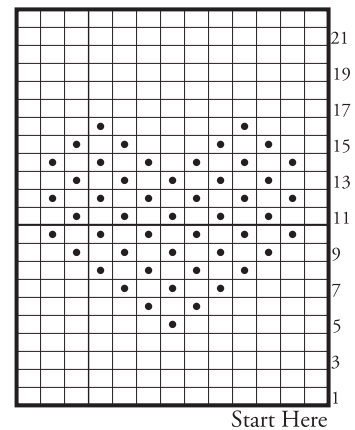
PANEL PAT A



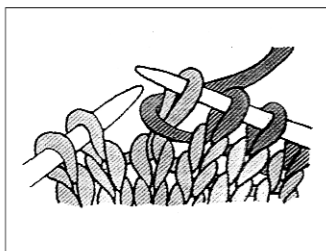
Key

- = Knit on RS rows and purl on WS rows.
- = Purl on RS rows and knit on WS rows.

CHART

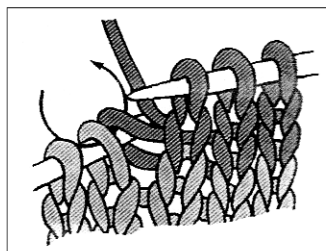


DIAGRAMS FOR COLLAR



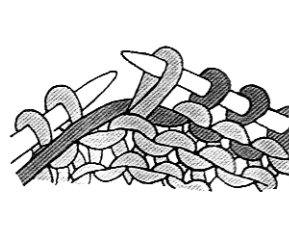
Sl wrap on knit stitches

Bring yarn forward, slip next stitch onto right-hand needle, take yarn back, return slipped stitch to left-hand needle. **Turn.** Leave slipped stitch on what is now right-hand needle, do not work.



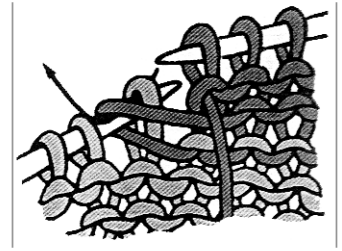
K wrap tog

Work to just before the wrapped stitch. Insert the right-hand needle under the wrap and knitwise into the wrapped stitch. Knit them together.



Sl wrap on purl stitches

Take yarn back, slip next stitch onto right-hand needle, bring yarn forward, return slipped stitch to left-hand needle. **Turn.** Leave slipped stitch on what is now right-hand needle, do not work.



P wrap tog

Work to just before the wrapped stitch. Insert the right-hand needle from behind into the back loop of the wrap and place it on left-hand needle. Purl it together with the stitch on the left-hand needle.

Patons

... a part of your life.

P.O. Box 40, Listowel ON N4W 3H3