

**Patons**  
**Canadiana**

**Patons**  
*Classic Wool*

**Patons**  
**DECOR**



**Just Like Mom (to knit)**

### SIZES

#### Chest/bust measurement

**6:** 26 ins [66 cm]  
**8:** 28 ins [71 cm]  
**10:** 30 ins [76 cm]  
**Extra-Small:** 32 ins [81 cm]  
**Small:** 34 ins [86.5 cm]  
**Medium:** 36 ins [91.5 cm]  
**Large:** 38 ins [96.5 cm]  
**Extra-Large:** 40 ins [101.5 cm]

#### Finished chest/bust

**6:** 33 ins [84 cm]  
**8:** 36 ins [91.5 cm]  
**10:** 39 ins [99 cm]  
**Extra-Small:** 42 ins [106.5 cm]  
**Small:** 44½ ins [113 cm]  
**Medium:** 47 ins [119.5 cm]  
**Large:** 49½ ins [125.5 cm]  
**Extra-Large:** 52 ins [132 cm]

### MATERIALS

**Patons® Canadiana** (100 g/3.5 oz)  
**or Patons® Classic Wool** (100 g/3.5 oz)  
**or Patons® Decor** (100 g/3.5 oz)

**Sizes 6 (8-10-XS-S-M-L-XL)**

**4 (5-5-6-7-8-9-9) balls**

Sizes 4 mm (U.S. 6) and 4½ mm (U.S. 7) knitting needles **or size needed to obtain tension.** Cable needle.

### TENSION

20 sts and 26 rows = 4 ins [10 cm] with larger needles in stocking st.

### ABBREVIATIONS

**MB** = (K1, P1) twice into next st. Pass 2nd, 3rd and 4th sts on right needle separately over first st. Bobble complete.

**Cr3L** = slip next 2 sts onto a cable needle and leave at front of work. P1, then K2 from cable needle.

**Cr3R** = slip next st onto a cable needle and leave at back of work. K2, then P1 from cable needle.

**Cr4L** = slip next 3 sts onto a cable needle and leave at front of work. P1, then K3 from cable needle.

**Cr4R** = slip next st onto a cable needle and leave at back of work. K3, then P1 from cable needle.

**C4F** = slip next 2 sts onto a cable needle and leave at front of work. K2, then K2 from cable needle.

**C4B** = slip next 2 sts onto a cable needle and leave at back of work. K2, then K2 from cable needle.

**C6F** = slip next 3 sts onto a cable needle and leave at front of work. K3, then K3 from cable needle.

**C6B** = slip next 3 sts onto a cable needle and leave at back of work. K3, then K3 from cable needle.

**M1** = pick up horizontal loop lying before next st and knit into back of it.



### INSTRUCTIONS

*The instructions are written for smallest size. If changes are necessary for larger sizes, the instructions will be written thus ( ).*

**PANEL PAT A** (worked over 21 sts)

**Foundation row 1:** (RS). P3. K2. P6. K2. P2. MB. P3. K2.

**Foundation row 2:** Knit all knit sts and purl all purl sts as they appear.

Proceed in pat as follows:

**1st row:** (RS). P3. K2. P6. K2. (P1, MB) twice. P2. K2.

**2nd and following alt rows:** Knit all knit sts and purl all purl sts as they appear.

**3rd row:** P3. Cr3L. P4. Cr3R. P2. MB. P3. K2.

**5th row:** P4. Cr3L. P2. Cr3R. P6. Cr3R.

**7th row:** P2. MB. P2. Cr3L. Cr3R. P6. Cr3R. P1.

**9th row:** (P1, MB) twice. P2. C4F. P6. Cr3R. P2.

**11th row:** P2. MB. P2. Cr3R. Cr3L. P4. Cr3R. P3.

**13th row:** P4. Cr3R. P2. Cr3L. P2. Cr3R. P4.

**15th row:** P3. Cr3R. P4. Cr3L. Cr3R. P2. MB. P2.

**17th row:** P2. Cr3R. P6. C4B. P2. (MB, P1) twice.

**19th row:** P1. Cr3R. P6. Cr3R. Cr3L. P2. MB. P2.

**21st row:** Cr3R. P6. Cr3R. P2. Cr3L. P4.

**23rd row:** K2. P3. MB. P2. Cr3R. P4. Cr3L. P3.

**25th row:** K2. P2. (MB, P1) twice. K2. P6. K2. P3.

**27th row:** K2. P3. MB. P2. Cr3L. P4. Cr3R. P3.

**29th row:** Cr3L. P6. Cr3L. P2. Cr3R. P4.

**31st row:** P1. Cr3L. P6. Cr3L. Cr3R. P2. MB. P2.

**33rd row:** P2. Cr3L. P6. C4B. P2. (MB, P1) twice.

**35th row:** P3. Cr3L. P4. Cr3R. Cr3L. P2. MB. P2.

**37th row:** P4. Cr3L. P2. Cr3R. P2. Cr3L. P4.

**39th row:** P2. MB. P2. Cr3L. Cr3R. P4. Cr3L. P3.

**41st row:** (P1, MB) twice. P2. C4F. P6. Cr3L. P2.

**43rd row:** P2. MB. P2. Cr3R. Cr3L. P6. Cr3L. P1.

**45th row:** P4. Cr3R. P2. Cr3L. P6. Cr3L.

**47th row:** P3. Cr3R. P4. Cr3L. P2. MB. P3. K2.

**48th row:** As 2nd row.

These 48 rows form Panel Pat A.



ABBREVIATIONS: [www.patonsyarns.com/glossary](http://www.patonsyarns.com/glossary)

**PANEL PAT B** (worked over 24 sts)

**Foundation row 1:** (RS). P3. K3. P6. K3. P2. MB. P3. K3.

**Foundation row 2:** Knit all knit sts and purl all purl sts as they appear.

Proceed in pat as follows:

**1st row:** (RS). P3. K3. P6. K3. (P1. MB) twice. P2. K3.

**2nd and following alt rows:** Knit all knit sts and purl all purl sts as they appear.

**3rd row:** P3. Cr4L. P4. Cr4R. P2. MB. P3. K3.

**5th row:** P4. Cr4L. P2. Cr4R. P6. Cr4R.

**7th row:** P2. MB. P2. Cr4L. Cr4R. P6. Cr4R. P1.

**9th row:** (P1. MB) twice. P2. C6F. P6. Cr4R. P2.

**11th row:** P2. MB. P2. Cr4R. Cr4L. P4. Cr4R. P3.

**13th row:** P4. Cr4R. P2. Cr4L. P2. Cr4R. P4.

**15th row:** P3. Cr4R. P4. Cr4L. Cr4R. P2. MB. P2.

**17th row:** P2. Cr4R. P6. C6B. P2. (MB. P1) twice.

**19th row:** P1. Cr4R. P6. Cr4R. Cr4L. P2. MB. P2.

**21st row:** Cr4R. P6. Cr4R. P2. Cr4L. P4.

**23rd row:** K3. P3. MB. P2. Cr4R. P4. Cr4L. P3.

**25th row:** K3. P2. (MB. P1) twice. K3. P6. K3. P3.

**27th row:** K3. P3. MB. P2. Cr4L. P4. Cr4R. P3.

**29th row:** Cr4L. P6. Cr4L. P2. Cr4R. P4.

**31st row:** P1. Cr4L. P6. Cr4L. Cr4R. P2. MB. P2.

**33rd row:** P2. Cr4L. P6. C6B. P2. (MB. P1) twice.

**35th row:** P3. Cr4L. P4. Cr4R. Cr4L. P2. MB. P2.

**37th row:** P4. Cr4L. P2. Cr4R. P2. Cr4L. P4.

**39th row:** P2. MB. P2. Cr4L. Cr4R. P4. Cr4L. P3.

**41st row:** (P1. MB) twice. P2. C6F. P6. Cr4L. P2.

**43rd row:** P2. MB. P2. Cr4R. Cr4L. P6. Cr4L. P1.

**45th row:** P4. Cr4R. P2. Cr4L. P6. Cr4L.

**47th row:** P3. Cr4R. P4. Cr4L. P2. MB. P3. K3.

**48th row:** As 2nd row.

These 48 rows form Panel Pat B.

## BACK

With smaller needles, cast on 83 (91-99-106-112-118-124-130) sts.

Work in garter st (knit every row) for 3 rows, ending with WS facing for next row.

**Next row:** (WS). K34 (38-42-43-46-49-52-55).

(M1. K4) 4 (4-4-0-0-0-0) times. (K2. M1. K3)

0 (0-0-4-4-4-4) times. K33 (37-41-43-46-49-52-55). 87 (95-103-110-116-122-128-134) sts.

Change to larger needles and proceed in pat as follows:

**1st row:** (RS). P23 (27-31-33-36-39-42-45). MB. P9. Work next 21 (21-21-24-24-24-24-24) sts as foundation row 1 of Panel Pat A (A-A-B-B-B-B). P9. MB. P23 (27-31-33-36-39-42-45).

**2nd row:** K33 (37-41-43-46-49-52-55). Work next 21 (21-21-24-24-24-24-24) sts as foundation row 2 of Panel Pat A (A-A-B-B-B-B). K33 (37-41-43-46-49-52-55).

Panel pat is now in position.

Keeping cont of panel pat, proceed in pat as follows:

**3rd row:** P22 (26-30-32-35-38-41-44). MB.

P1. MB. P8. Work appropriate row of panel pat

across next 21 (21-21-24-24-24-24-24) sts. P8. MB. P1. MB. P22 (26-30-32-35-38-41-44).

**4th and every following alt row:** K33 (37-41-43-46-49-52-55). Work appropriate row of panel pat across next 21 (21-21-24-24-24-24-24) sts. K33 (37-41-43-46-49-52-55).

**5th row:** P23 (27-31-33-36-39-42-45). MB. P9. Work appropriate row of panel pat across next 21 (21-21-24-24-24-24-24) sts. P9. MB. P23 (27-31-33-36-39-42-45).

**7th row:** P33 (37-41-43-46-49-52-55). Work appropriate row of panel pat across next 21 (21-21-24-24-24-24-24) sts. P33 (37-41-43-46-49-52-55).

**9th row:** P7 (11-15-17-20-23-26-29). MB. P25. Work appropriate row of panel pat across next 21 (21-21-24-24-24-24-24) sts. P25. MB. P7 (11-15-17-20-23-26-29).

**11th row:** P6 (10-14-16-19-22-25-28). MB. P1. MB. P24. Work appropriate row of panel pat across next 21 (21-21-24-24-24-24-24) sts. P24. MB. P1. MB. P6 (10-14-16-19-22-25-28).

**13th row:** As 9th row.

**15th row:** As 7th row.

**17th row:** P33 (37-41-2-5-8-11-14). (MB. P40) 0 (0-0-1-1-1-1) time. Work appropriate row of panel pat across next 21 (21-21-24-24-24-24-24) sts. (P40. MB) 0 (0-0-1-1-1-1) time. P33 (37-41-2-5-8-11-14).

**19th row:** P33 (37-41-1-4-7-10-13). (MB. P1. MB. P39) 0 (0-0-1-1-1-1) time. Work appropriate row of panel pat across next 21 (21-21-24-24-24-24-24) sts. (P39. MB. P1. MB) 0 (0-0-1-1-1-1) time. P33 (37-41-1-4-7-10-13).

**21st row:** As 17th row.

**23rd row:** As 7th row.

**24th row:** As 4th row.

These 24 rows form Bobble Pat at either side of Panel Pat.

Cont in pat until Back from beg measures 12¼ (13¾-15-16½-18-18½-18½-19) ins [31 (35-38-42-46-47-47-48) cm], ending with RS facing for next row.

**Shape armholes:** Keeping cont of pat, cast off 5 (5-5-6-6-6-6) sts beg next 2 rows. 77 (85-93-98-104-110-116-122) sts.

Cont even in pat until armhole measures 7½ (8¼-9-9½-10-10-10½-10½) ins [19 (21-23-24-25-25-26-26) cm], ending with RS facing for next row.

**Shape shoulders and back neck:** Cast off 8 (9-10-11-11-12-13-14) sts beg next 2 rows. 61 (67-73-76-82-86-90-94) sts.

**Next row:** (RS). Cast off 8 (9-10-11-11-12-13-14) sts. Pat across until there are 11 (13-14-14-16-17-17-18) sts on right hand needle. **Turn** and work this side first.

Cast off 4 sts beg next row.

Cast off rem 7 (9-10-10-12-13-13-14) sts.

With RS facing, rejoin yarn to rem sts. Cast off center 23 (23-25-26-28-28-30-30) sts, dec 4 sts evenly across top of Panel Pat. Pat to end of row. Cast off 8 (9-10-11-11-12-13-14) sts beg next row. Cast off 4 sts beg next row.

Cast off rem 7 (9-10-10-12-13-13-14) sts.

## FRONT

Work as for Back until 10 (10-10-12-12-12-12-12) rows less than Back have been worked to beg of shoulder shaping, thus ending with RS facing for next row.

**Shape neck: Next row:** (RS). Pat 31 (35-38-40-42-45-47-50) sts. **Turn** and work this side first. Cast off 4 (4-4-3-3-3-3) sts at beg of next row. 27 (31-34-37-39-42-44-47) sts.

Dec 1 st at neck edge on next 2 rows, then on following alt rows 2 (2-2-3-3-3-3) times. 23 (27-30-32-34-37-39-42) sts.

Work 2 rows even in pat, thus ending with RS facing for next row.

**Shape shoulder:** Cast off 8 (9-10-11-11-12-13-14) sts beg of next and following alt row. Work 1 row even.

Cast off rem 7 (9-10-10-12-13-13-14) sts.

With RS facing, rejoin yarn to rem sts. Cast off center 15 (15-17-18-20-20-22-22) sts, dec 4 sts evenly across top of Panel Pat. Pat to end of row. 31 (35-38-40-42-45-47-50) sts.

Work 1 row even.

Cast off 4 (4-4-3-3-3-3) sts at beg of next row. 27 (31-34-37-39-42-44-47) sts.

Dec 1 st at neck edge on next 2 rows, then on following alt rows 2 (2-2-3-3-3-3) times. 23 (27-30-32-34-37-39-42) sts.  
Work 2 rows even in pat, thus ending with WS facing for next row.

**Shape shoulder:** Cast off 8 (9-10-11-11-12-13-14) sts beg of next and following alt row. Work 1 row even.  
Cast off rem 7 (9-10-10-12-13-13-14) sts.

**SLEEVES**

With smaller needles, cast on 41 (47-51-55-59-59-61-61) sts.  
Work 4 rows in garter st, ending with RS facing for next row.

Change to larger needles and proceed in pat as follows:

**1st row:** (RS). Inc 1 st in first st. P19 (22-24-26-28-28-29-29). MB. P19 (22-24-26-28-28-29-29). Inc 1 st in last st. 43 (49-53-57-61-61-63-63) sts.

**2nd and every following alt row:** Knit.

**3rd row:** P20 (23-25-27-29-29-30-30). MB. P1. MB. P20 (23-25-27-29-29-30-30).

**5th row:** Inc 1 st in first st. P20 (23-25-27-29-29-30-30). MB. P20 (23-25-27-29-29-30-30). Inc 1 st in last st. 45 (51-55-59-63-63-65-65) sts.

**7th row:** Purl.

**9th row:** Inc 1 st in first st. P5 (8-10-12-14-14-15-15). MB. P31. MB. P5 (8-10-12-14-14-15-15). Inc 1 st in last st. 47 (53-57-61-65-65-67-67) sts.

**11th row:** P6 (9-11-13-15-15-16-16). MB. P1. MB. P29. MB. P1. MB. P6 (9-11-13-15-15-16-16).

**13th row:** Inc 1 st in first st. P6 (9-11-13-15-15-16-16). MB. P31. MB. P6 (9-11-13-15-15-16-16). Inc 1 st in last st. 49 (55-59-63-67-67-69-69) sts.

**15th row:** Purl.

**17th row:** (Inc 1 st in first st) 1 (1-1-1-0-0-1-1) time. P47 (53-57-61-1-1-1-1). (MB. P63. MB. P1) 0 (0-0-0-1-1-1-1) time. (Inc 1 st in last st) 1 (1-1-1-0-0-1-1) time. 51 (57-61-65-67-67-71-71) sts.

**19th row:** (Inc 1 st in first st) 0 (0-0-0-1-1-0-0) time. P51 (57-61-65-1-1-2-2). (MB. P61. MB. P1) 0 (0-0-0-1-1-0-0) time. (MB. P1. MB. P61. MB. P1. MB. P2) 0 (0-0-0-0-1-1) time. (Inc 1 st in last st) 0 (0-0-0-1-1-0-0) time. 51 (57-61-65-69-69-71-71) sts.

**21st row:** (Inc 1 st in first st) 1 (1-1-1-0-0-1-1) time. P49 (55-59-63-2-2-2-2). (MB. P63. MB. P2) 0 (0-0-0-1-1-1-1) time. (Inc 1 st in last st) 1 (1-1-1-0-0-1-1) time. 53 (59-63-67-69-69-73-73) sts.

**23rd row:** Purl.

**24th row:** Knit.

These 24 rows form Bobble Pat and beg sleeve shaping.

Cont in pat, shaping sides by inc 1 st at each end of every following 4th row from previous inc until there are 81 (69-75-75-99-99-103-103) sts, taking inc sts into pat.

**Sizes 8, 10 and Extra-Small only:** Inc 1 st at each end of every following 6th row until there are (83-91-95) sts, taking inc sts into pat.

**All Sizes:** Cont even in pat until Sleeve from beg measures 12½ (14¼-16-17½-18¼-18¾-19-19) ins [32 (36-40.5-44.5-46.5-47.5-48-48) cm], ending with RS facing for next row.

Cast off in pat.

Place markers along side edges of Sleeves 1 (1-1-1¼-1¼-1¼-1¼-1¼) ins [2.5 (2.5-2.5-3-3-3-3) cm] down from cast-off edge.

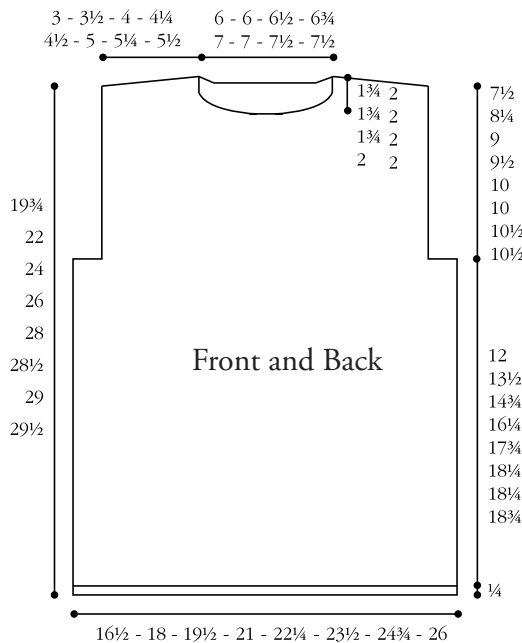
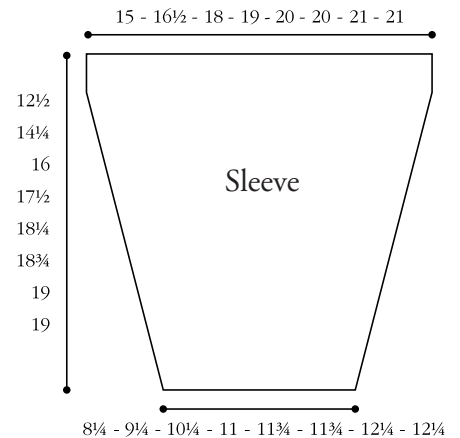
**FINISHING**

Pin garment pieces to measurements. Cover with a damp cloth leaving to dry.  
Join right shoulder seam.

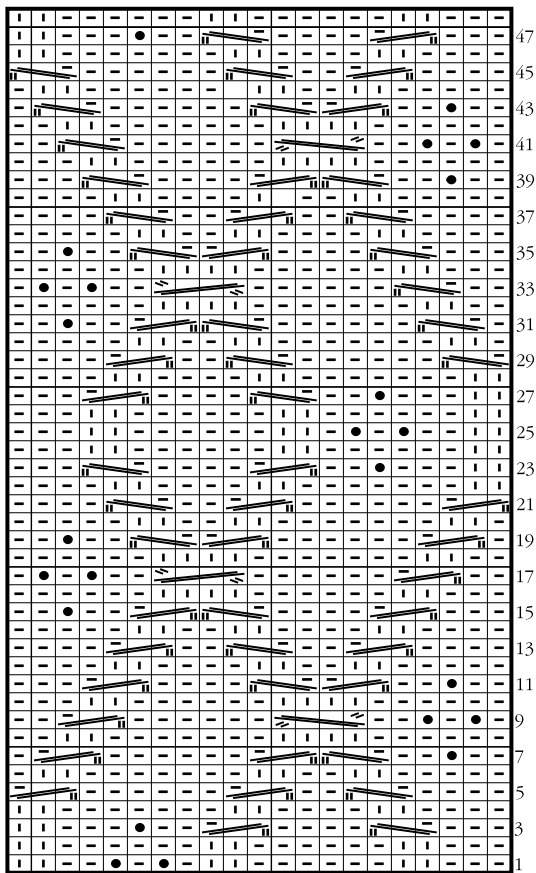
**Neckband:** With RS of work facing and smaller needles, pick up and knit 14 (14-14-16-16-16-16) sts down left front neck edge, 11 (11-13-14-16-16-18-18) sts across center front, 14 (14-14-16-16-16-16) sts up right front neck edge and 27 (27-29-30-32-32-34-34) sts around back neck edge. 66 (66-70-76-80-80-84-84) sts.

Work in garter st for 2 rows, ending with WS facing for next row. Cast off knitwise (WS).

Sew left shoulder and neckband seam. Sew side seams. Sew in sleeves placing rows above markers along cast off sts of Front and Back to form square armholes.

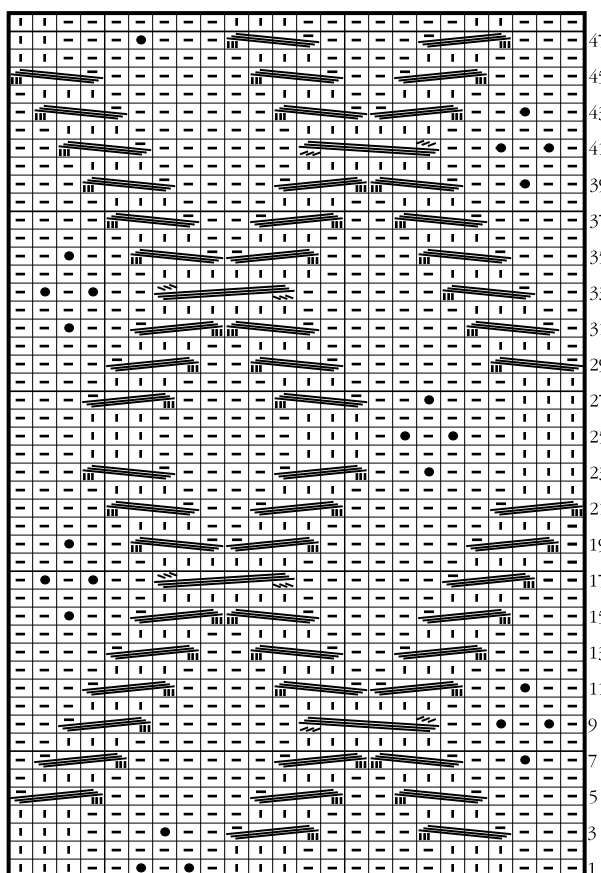


### Panel Pat A



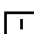
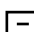





Start Here

### Panel Pat B

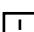

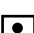






Start Here

#### Pat A Key

-  = Knit on RS, purl on WS
-  = Purl on RS, knit on WS
-  = MB
-  = Cr3L
-  = Cr3R
-  = C4F
-  = C4B

#### Pat B Key

-  = Knit on RS, purl on WS
-  = Purl on RS, knit on WS
-  = MB
-  = Cr4L
-  = Cr4R
-  = C6F
-  = C6B



... a part of your life.

P.O. Box 40, Listowel ON N4W 3H3