



INTERMEDIATE

### MEASUREMENTS

#### Chest measurement

**2 - 22" [ 56 cm ]**  
**4 - 24" [ 61 cm ]**  
**6 - 25" [ 63.5 cm ]**

#### Finished chest

**2 - 30" [ 76 cm ]**  
**4 - 34" [ 86.5 cm ]**  
**6 - 36" [ 91.5 cm ]**

### GAUGE

18 sts and 24 rows = 4" [10 cm] with larger needles in stocking st.

### MATERIALS

**Patons® Classic Wool™** (3.5 oz/100 g)  
**or Patons® Décor™** (3.5 oz/100 g; 208 yds/190 m)

<b>SIZES</b>	<b>2</b>	<b>4</b>	<b>6</b>	
	<b>4</b>	<b>5</b>	<b>5</b>	<b>balls</b>

Sizes U.S. 6 (4 mm) and U.S. 8 (5 mm) knitting needles **or size needed to obtain gauge.**  
Cable needle. **4 (5-5)** buttons.

### INSTRUCTIONS

*The instructions are written for smallest size. If changes are necessary for larger sizes, the instructions will be written thus: ( ).*

#### PANEL PAT A (worked over 20 sts).

**1st row:** P2. C2B. P2. C4B. C4F. P2. C2F. P2.  
**2nd row:** K2. P2. K2. P8. K2. P2. K2.  
**3rd row:** P2. C2B. P2. K8. P2. C2F. P2.  
**4th row:** As 2nd row.  
These 4 rows form Panel Pat A.

#### Panel Pat B (worked over 20 sts).

**1st row:** P2. C4B. P2. K4. P2. C4B. P2.  
**2nd and alt row:** Knit all knit sts and purl all purl sts as they appear.  
**3rd row:** P2. K4. P2. C4B. P2. K4. P2.  
**5th row:** As 1st row.  
**7th row:** T4B. T4F. C4B. T4B. T4F.  
**9th row:** K2. P4. (C4F) twice. P4. K2.  
**11th row:** K2. P4. K2. C4B. K2. P4. K2.  
**13th row:** As 9th row.  
**15th row:** T4F. T4B. C4B. T4F. T4B.  
**16th row:** As 2nd row.  
These 16 rows form Panel Pat B.

### BACK

With smaller needles, cast on **71 (79-83)** sts.  
**1st row:** (RS). K1. \*P1. K1. Rep from \* to end of row.  
**2nd row:** P1. \*K1. P1. Rep from \* to end of row. Rep these 2 rows (K1. P1) ribbing for 2" [5 cm] ending on a 2nd row and inc **17 (17-21)** sts evenly across last row. **88 (96-104)** sts.

Change to larger needles and proceed in pat as follows:

**1st row:** (RS). (P1. KB1) **7 (9-11)** times. Work 1st row of Panel Pat A. Work 1st row of Panel Pat B. Work 1st row of Panel Pat A. (KB1. P1) **7 (9-11)** times.

**2nd row:** **K14 (18-22)**. Work 2nd row of Panel Pat A. Work 2nd row of Panel Pat B. Work 2nd row of Panel Pat A. **K14 (18-22)**. These 2 rows form rice st pat. Panel pats are now in position. Cont in pat, keeping cont of panel pats, until work from beg measures **8½ (10½-11½)" [21.5 (26.5-29) cm]**, ending with RS facing for next row.

**Shape raglans:** Cast off 2 sts beg next 2 rows. **84 (92-100)** sts.

**Next row:** (RS). K1. Sl1. K1. pss0. Pat to last 3 sts. K2tog. K1.

**Next row:** P2. Pat to last 2 sts. P2. Rep last 2 rows **7 (8-9)** times more. **68 (74-80)** sts.

**Next row:** K1. Sl1. K1. pss0. Pat to last 3 sts. K2tog. K1.

**Next row:** P1. P2tog. Pat to last 3 sts. P2togtbl. P1. Rep last 2 rows **11 (12-13)** times more. **20 (22-24)** sts. Cast off.

### POCKET LININGS (Make 2)

With larger needles, cast on 18 sts and work 6 rows in stocking st, ending with RS facing for next row. Leave these sts on a spare needle.

### LEFT FRONT

\*\*With smaller needles, cast on **37 (41-43)** sts. Proceed in (K1. P1) ribbing as given for Back for 2" [5 cm] ending on a 2nd row and inc **7 (7-9)** sts evenly across last row. **44 (48-52)** sts.\*\*



Change to larger needles and proceed in pat as follows:

**1st row:** (RS). (P1. KB1) **6 (8-10)** times. P2. C2B. P2. Work 1st row of Panel Pat B. P2. C2F. P2.

**2nd row:** K2. P2. K2. Work 2nd row of Panel Pat B. K2. P2. K**14 (18-22)**.

These 2 rows form rice st pat.  
Panel pats are now in position.

Cont in pat, keeping cont of panel pats, for 4 more rows.

**Divide for pocket: Next row:** (RS). Pat across **12 (16-20)** sts. K18 from first pocket lining. Leave rem 32 sts on a spare needle.

**Next row:** P18 from first pocket lining. Pat across **12 (16-20)** sts.

Cont on these **30 (34-38)** sts, as established until 23 rows in total have been worked.

**Next row:** (WS). Cast off 18 sts. Pat to end of row. **12 (16-20)** sts rem. **Do not** break yarn. Leave these sts on a spare needle.

With RS of work facing, join second ball of yarn to rem 32 sts. Pat to end of row.

Work a further 23 rows pat, thus ending with RS facing for next row. Break yarn.

**Joining row:** (RS). Pat across **12 (16-20)** sts from left side. Pat across 32 sts. **44 (48-52)** sts.

Cont in pat until work from beg measures **8½ (10½-11½)" [21.5 (26.5-29) cm]**, ending with RS facing for next row.

**Shape raglan and V-neck: 1st row:** (RS). Cast off 2 sts (raglan edge). Pat to last 6 sts. Work 2tog (V-neck shaping). C2F. P2. **41 (45-49)** sts.

**2nd row:** Pat to last 2 sts. P2.

**3rd row:** K1. Sl1. K1. pss0. Pat to end of row.

**4th row:** As 2nd row.

Rep last 2 rows once more. **39 (43-47)** sts.

Proceed as follows:

**1st row:** (RS). K1. Sl1. K1. pss0. Pat to last 6 sts. Work 2tog. C2F. P2.

**2nd row:** Pat to last 2 sts. P2.

**3rd row:** K1. Sl1. K1. pss0. Pat to end of row.

**4th row:** As 2nd row.

**5th and 6th rows:** As 3rd and 4th rows.

Rep last 6 rows once more. **31 (35-39)** sts.

**Sizes 4 and 6 only: 1st row:** (RS). K1. Sl1. K1. pss0. Pat to last 6 sts. Work 2tog. C2F. P2.

**2nd row:** Pat to last 2 sts. P2. **(33-37)** sts.

**Size 6 only: 1st row:** K1. Sl1. K1. pss0. Pat to end of row.

**2nd row:** Pat to last 2 sts. P2. 36 sts.

**Sizes 4 and 6 only: 1st row:** (RS). K1. Sl1. K1. pss0. Pat to end of row.

**2nd row:** Pat to last 3 sts. P2togtbl. P1.

Rep last 2 rows **(1-0)** time more. **(29-34)** sts.

**Size 2 only: 1st row:** (RS). K1. Sl1. K1. pss0. Pat to last 6 sts. Work 2tog. C2F. P2.

**2nd row:** Pat to last 3 sts. P2togtbl. P1.

**3rd row:** K1. Sl1. K1. pss0. Pat to end of row.

**4th row:** As 2nd row.

**5th row:** As 1st row.

**6th row:** As 2nd row. 24 sts.

**All Sizes: 1st row:** (RS). K1. Sl1. K1. pss0. Pat to last 6 sts. Work 2tog. C2F. P2.

**2nd row:** Pat to last 3 sts. P2togtbl. P1.

**3rd row:** K1. Sl1. K1. pss0. Pat to end of row.

**4th row:** As 2nd row.

Rep last 4 rows **1 (2-3)** time(s) more. 14 sts.  
Proceed as follows:

**1st row:** K1. Sl1. K1. pss0. Pat to last 2 sts. K2tog.

**2nd row:** Pat to last 3 sts. P2togtbl. P1.

**3rd row:** K1. Sl1. K1. pss0. Pat to end of row.

**4th row:** As 2nd row.

**5th row:** K1. Sl1. K1. pss0. Pat to last 2 sts. K2tog.

**6th row:** Pat to last 3 sts. P2togtbl. P1. 6 sts.

**7th row:** Sl1. K1. pss0. Pat to end of row.

**8th row:** Pat to last 2 sts. P2tog.

**9th row:** Sl1. K1. pss0. K2tog.

**10th row:** P2tog. Fasten off.

### RIGHT FRONT

Work from \*\* to \*\* as given for Left Front.  
Change to larger needles and proceed in pat as follows:

**1st row:** (RS). P2. C2B. P2. Work 1st row of Panel Pat B. P2. C2F. P2. (KB1. P1) **6 (8-10)** times.

**2nd row:** K**14 (18-22)**. P2. K2. Work 2nd row of Panel Pat B. K2. P2. K2.

These 2 rows form rice st pat.  
Panel pats are now in position.

Cont in pat, keeping cont of panel pats, for 4 more rows.

**Divide for pocket: Next row:** (RS). Pat across 32 sts. **Turn**. Leave rem **12 (16-20)** sts on a spare needle.

Work a further 23 rows pat, thus ending with RS facing for next row. **Do not** break yarn.

With RS of work facing join second ball of yarn and K18 from 2nd pocket lining. Pat across rem **12 (16-20)** sts on spare needle.

**Next row:** Pat across **12 (16-20)** sts. P18 from second pocket lining.

Cont in pat on these **30 (34-38)** sts as established until 23 rows in total have been worked.

**Next row:** (WS). Pat across **12 (16-20)** sts. Cast off 18 sts. Fasten off.

**Joining row:** (RS). Pat across 32 sts. Pat across **12 (16-20)** sts from left side. **44 (48-52)** sts.

Cont in pat until work from beg measures **8½ (10½-11½)" [21.5 (26.5-29) cm]**, ending with WS facing for next row.

**Shape raglan and V-neck: 1st row:** (WS). Cast off 2 sts (raglan edge). Pat to end of row.

**2nd row:** P2. C2B. Work 2tog (V-neck shaping). Pat to last 3 sts. K2tog. K1.

**3rd row:** P2. Pat to end of row.

**4th row:** Pat to last 3 sts. K2tog. K1.

Rep 3rd row once. **39 (43-47)** sts.

Proceed as follows:

**1st row:** (RS). P2. C2B. Work 2tog. Pat to last 3 sts. K2tog. K1.

**2nd row:** P2. Pat to end of row.

**3rd row:** Pat to last 3 sts. K2tog. K1.

**4th row:** As 2nd row.

Rep last 2 rows rows once more.

Rep last 6 rows once more. **31 (35-39)** sts.

**Sizes 4 and 6 only: 1st row:** (RS). P2. C2B. Work 2tog. Pat to last 3 sts. K2tog. K1.

**2nd row:** P2. Pat to end of row. **(33-37)** sts.

**Size 6 only: 1st row:** Pat to last 3 sts. K2tog. K1.

**2nd row:** P2. Pat to end of row. 36 sts.

**Sizes 4 and 6 only: 1st row:** Pat to last 3 sts. K2tog. K1.

**2nd row:** P2. Work 2tog. Pat to end of row. Rep last 2 rows **(1-0)** time more. **(29-34)** sts.

**Size 2 only: 1st row:** (RS). P2. C2B. Work 2tog. Pat to last 3 sts. K2tog. K1.

**2nd row:** P1. P2tog. Pat to end of row.

**3rd row:** Pat to last 3 sts. K2tog. K1.

**4th row:** As 2nd row.



**5th row:** As 1st row.

**6th row:** As 2nd row. 24 sts.

**All Sizes: 1st row:** (RS). P2. C2B. Work 2tog. Pat to last 3 sts. K2tog. K1.

**2nd row:** P1. P2tog. Pat to end of row.

**3rd row:** Pat to last 3 sts. K2tog. K1.

**4th row:** As 2nd row.

Rep last 4 rows **1 (2-3)** time(s) more. 14 sts.

Proceed as follows:

**1st row:** Sl1. K1. pss0. Pat to last 3 sts. K2tog. K1.

**2nd row:** P1. P2tog. Pat to end of row.

**3rd row:** Sl1. K1. pss0. Pat to end of row.

**4th row:** As 2nd row.

**5th row:** As 1st row.

**6th row:** As 2nd row.

**7th row:** Pat to last 2 sts. K2tog.

**8th row:** P2tog. Pat to end of row.

**9th row:** Sl1. K1. pss0. K2tog.

**10th row:** P2tog. Fasten off.

### SLEEVES

With smaller needles, cast on **37 (41-45)** sts and work 2" [5 cm] in (K1. P1) ribbing as given for Back inc 7 sts evenly across last row. **44 (48-52)** sts.

Change to larger needles and proceed in pat as follows:

**1st row:** (RS). (P1. KB1) **3 (4-5)** times. P2. C2B. P2. Work 1st row of Panel Pat B. P2. C2F. P2. (KB1. P1) **3 (4-5)** times.

**2nd row:** **K8 (10-12)**. P2. K2. Work 2nd row of Panel Pat B. K2. P2. **K8 (10-12)**.

These 2 rows form rice st pat.

Panel pats are now in position.

Cont in pat, keeping cont of panel pats, inc 1 st each end of needle on next and every alt row until there are **52 (52-56)** sts, then every following 4th row until there are **64 (70-78)** sts, taking inc sts into rice st pat.

Cont even in pat until Sleeve from beg measures **8½ (10½-12)" [21.5 (26.5-30.5) cm]** ending with RS facing for next row.

**Shape raglans:** Cast off 2 sts beg next 2 rows. **60 (66-74)** sts.

**1st row:** K1. Sl1. K1. pss0. Pat to last 3 sts. K2tog. K1.

**2nd row:** P2. Pat to last 2 sts. P2.

Rep last 2 rows **13 (14-14)** times more. **32 (36-44)** sts.

**Next row:** K1. Sl1. K1. pss0. Pat to last 3 sts. K2tog. K1.

**Next row:** P1. P2tog. Pat to last 3 sts. P2togtbl. P1.

Rep last 2 rows **5 (6-8)** times more. 8 sts. Cast off.

### FINISHING

Pin garment pieces to measurements. Cover with a damp cloth leaving to dry.

**Button and Buttonhole band:** Sew raglan seams. With smaller needles, cast on 7 sts. Proceed in (K1. P1) ribbing as given for Back until band, when slightly stretched, fits up Left Front for Her or Right Front for Him to shoulder, sewing in place as you work. Mark position for **4 (5-5)** buttons, having the top button ½ inch [1 cm] below beg of front shaping and the bottom button ½ inch [1 cm] above lower edge.

Cont in ribbing around back neck edge and down opposite front edge working buttonholes to correspond to button positions as follows:

**His Version:** (RS). Rib 3. Cast off 2 sts. Rib to end of row.

**Her Version:** (RS). Rib 2. Cast off 2 sts. Rib to end of row.

**Both Versions: Next row:** Rib, casting on 2 sts over cast off sts. Cast off in ribbing.

**Pocket Edging:** With RS of work facing and smaller needles, pick up and knit 23 sts along pocket opening. Beg on a 2nd row, work 5 rows in (K1. P1) ribbing as given for Back. Cast off in ribbing. Sew sides of Pocket Edging in position. Sew Pocket Lining in position to WS.

Sew side and sleeve seams. Sew buttons to correspond to buttonholes.

### ABBREVIATIONS: [www.yarnspirations.com/abbreviations](http://www.yarnspirations.com/abbreviations)

**C2B** = Knit into front of 2nd st on left hand needle, then knit into front of 1st st, slipping both sts off needle tog.

**C2F** = Working behind first st. Knit into front of 2nd st on left hand needle, then knit into front of first st, slipping both sts off needle tog.

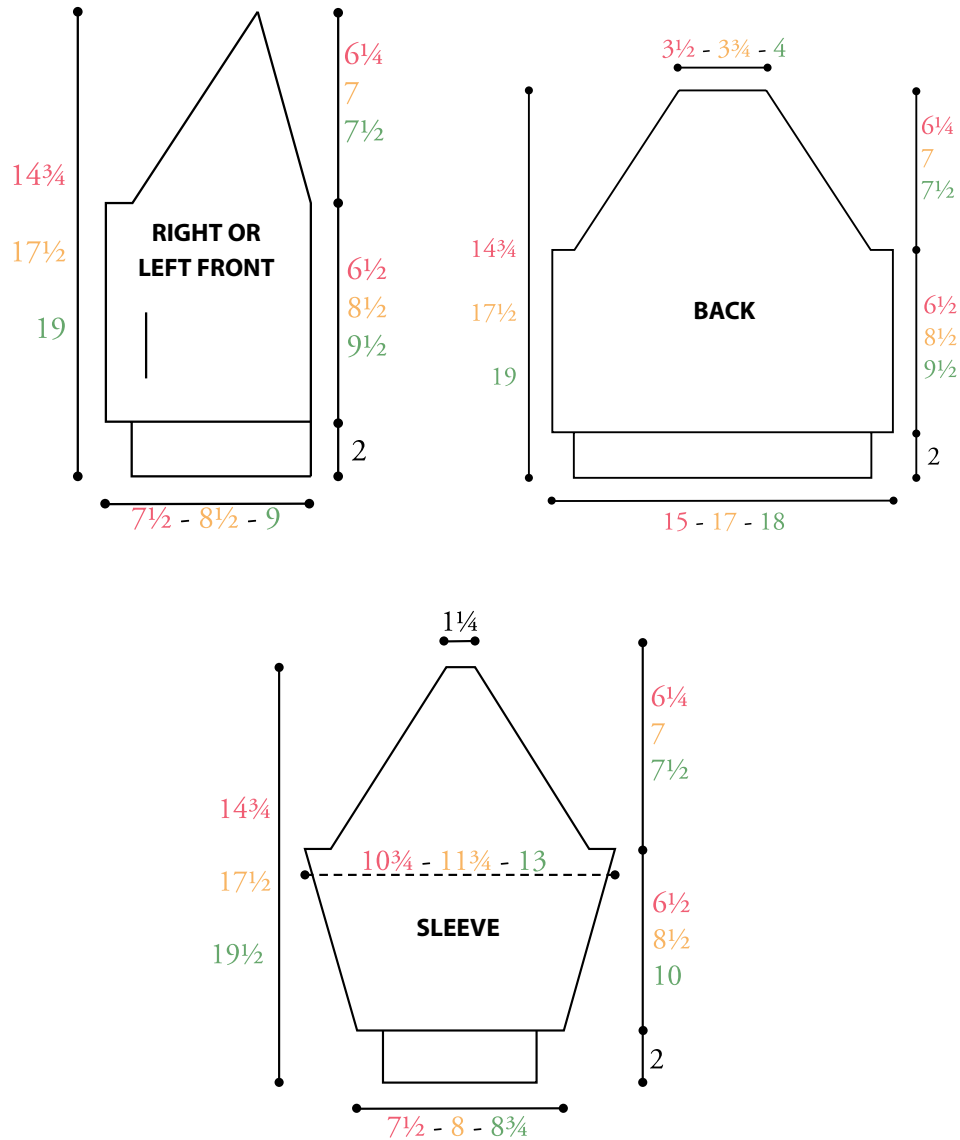
**C4B** = Slip next 2 sts onto a cable needle and leave at back of work. K2, then K2 from cable needle.

**C4F** = Slip next 2 sts onto a cable needle and leave at front of work. K2, then K2 from cable needle.

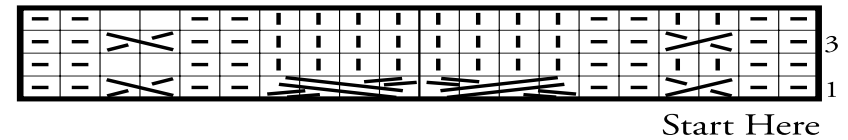
**KB1** = Knit into back of next st.

**T4B** = Slip next 2 sts onto a cable needle and leave at back of work. K2, then P2 from cable needle.

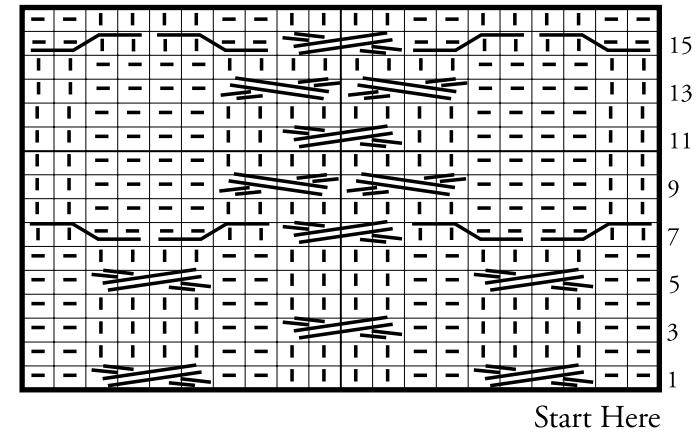
**T4F** = Slip next 2 sts onto a cable needle and leave at front of work. P2, then K2 from cable needle.



**PANEL PAT A**



**PANEL PAT B**



**KEY**

- = Knit on RS rows and purl on WS rows.
- = Purl on RS rows and knit on WS rows.
- = C2F
- = C2B
- = C4B
- = C4F
- = T4B
- = T4F