



Fair Isle Classic

SIZES

2: 21 ins [53.5 cm]
4: 23 ins [58.5 cm]
6: 25½ ins [65 cm]

Finished chest

2: 27 ins [68.5 cm]
4: 29 ins [73.5 cm]
6: 32 ins [81.5 cm]

MATERIALS

Patons® Astra (50 g/1.75 oz)

Sizes: 2 (4-6)

Main Color (MC) (Lilac) 4 (5-5) **balls**

Contrast A (Deep Pink) 1 (1-1) **ball**

Contrast B (Aran) 1 (1-1) **ball**

Contrast C (Yellow) 1 (1-1) **ball**

Contrast D (Aqua) 1 (1-1) **ball**

Sizes 3¼ mm (U.S. 3) and 4 mm (U.S. 6) circular knitting needles. Sizes 3¼ mm (U.S. 3) and 4 mm (U.S. 6) knitting needles **or size needed to obtain tension.** 5 buttons.

TENSION

22 sts and 30 rows = 4 ins [10 cm] with larger needles in stocking st.

INSTRUCTIONS

The instructions are written for smallest size. If changes are necessary for larger sizes, the instructions will be written thus ().

Note: When working from charts, carry colors not in use **loosely** across WS of work but never over more than 3 sts. When it must pass over more than 3 sts, weave it over and under center st of sts it passes over. The colors are never twisted around one another.

BODY (make in one piece)

With C and smaller circular needle, cast on 137 (147-163) sts.

****1st row:** (WS). Knit.

2nd and 3rd rows: With D, knit.

4th and 5th rows: With A, knit.

6th row: *With MC, K1. With A, K1. Rep from * to last st. With MC, K1.**

7th row: With MC, purl, inc 6 (8-8) sts evenly across. 143 (155-171) sts.

With MC, change to larger needles and proceed in stocking st until work from beg measures 7½ (8½-9) ins [19 (21.5-23) cm], ending with RS facing for next row.

Shape armholes: Next row: K33 (36-40). Cast off 6 sts. K65 (71-79) (including st on needle after cast off). Cast off 6 sts. Knit to end of row.

Left Front: 1st row: (WS). P33 (36-40). **Turn.**

2nd row: K2. Sl1. K1. pssso. Knit to end of row.

3rd row: Purl.

Rep last 2 rows 3 (5-7) times more. 29 (30-32) sts.

Left Front shaping: 1st row: K2. Sl1. K1. pssso. K20 (21-22). **Turn.** Leave rem 5 (5-6) sts unworked.

2nd and alt rows: Sl1. Purl to end of row.

3rd row: K2. Sl1. K1. pssso. K16 (17-18). **Turn.** Leave rem 3 sts unworked.

5th row: K2. Sl1. K1. pssso. K12 (13-14). **Turn.** Leave rem 3 sts unworked.

7th row: K2. Sl1. K1. pssso. K8 (9-10). **Turn.** Leave rem 3 sts unworked.

8th row: Sl1. Purl to end of row. 11 (12-13) sts. Break yarn. Leave rem sts on a spare needle.

Back: With WS of work facing, rejoin MC to Back sts. P65 (71-79).

Next row: K2. Sl1. K1. pssso. Knit to last 4 sts. K2tog. K2.

Next row: Purl.

Rep last 2 rows 7 (9-11) times more. 49 (51-55) sts. Break yarn.

Right Front: With WS of work facing, rejoin MC to Right Front sts. P33 (36-40).

Next row: Knit to last 4 sts. K2tog. K2.

Next row: Purl.

Rep last 2 rows 3 (5-7) times more. 29 (30-32) sts.



Right Front shaping: 1st row: Knit to last 4 sts. K2tog. K2.

2nd row: P23 (24-25). **Turn.** Leave rem 5 (5-6) sts unworked.

3rd and alt rows: Sl1. Knit to last 4 sts. K2tog. K2.

4th row: P19 (20-21). **Turn.** Leave rem 3 sts unworked.

6th row: P15 (16-17). **Turn.** Leave rem 3 sts unworked.

8th row: P11 (12-13). Break yarn. Leave rem sts on a spare needle.

SLEEVES

With C and pair of smaller needles, cast on 39 (41-43) sts.

Work from ** to ** as given for Body.

Next row: With MC, purl, inc 4 sts evenly across row. 43 (45-47) sts.

Change to larger needles and proceed in stocking st, inc 1 st each end of needle on next and every following 4th row to 69 (73-79) sts.

Cont even until work from beg measures 8½ (10½-11½) ins [21.5 (26.5-29) cm], ending with RS facing for next row.

Armhole shaping: Cast off 4 sts beg next 2 rows. 61 (65-71) sts.

Next row: K2. Sl1. K1. pssso. Knit to last 4 sts. K2tog. K2.

Next row: Purl.

Rep last 2 rows 7 (9-11) times more. 45 (45-47) sts. Break yarn.

YOKE

With RS of work facing, MC and larger circular needle, [Sl1. K1. pssso. K21 (22-24). K2tog] across Right Front. [Sl1. K1. pssso. K41 (41-43). K2tog] across Right Sleeve. [Sl1. K1. pssso. K45 (47-51). K2tog] across Back. [Sl1. K1. pssso.

K41 (41-43). K2tog] across Left Sleeve. [Sl1. K1. pssso. K21 (22-24). K2tog] across Left Front. 179 (183-195) sts.

Next row: (WS). *With MC, P1. With C, P1. Rep from * to last st. With MC, P1.

Next row: With C, knit.

Next row: With C, P3 (3-11). *P2tog. P6 (7-7). Rep from * to last 0 (0-4) sts. P0 (0-4). 157 (163-175) sts.

Next row: (RS). Work 1st row of Chart I, reading row from **right** to left, noting 6 st rep will be worked 26 (27-29) times.

Next row: Work 2nd row of Chart I, reading row from **left** to right. Chart I is now in position. Work Chart I to end of chart.

Next row: With C, K10 (6-12). *K2tog. K4. Rep from * to last 3 (1-7) st(s). K3 (1-7). 133 (137-149) sts.

Next row: (WS). Work 1st row of Chart II, reading row from **left** to right, noting 4 st rep will be worked 33 (34-37) times.

Next row: Work 2nd row of Chart II, reading row from **right** to left. Chart II is now in position. Work Chart II to end of chart.

Next row: With A, knit.

Next row: With A, P4 (6-11). *P2tog. P2. Rep from * to last 1 (3-10) st(s). P1 (3-10). 101 (105-117) sts.

Next row: Work 1st row of Chart III, reading row from **right** to left, noting 4 st rep will be worked 25 (26-29) times.

Next row: Work 2nd row of Chart III, reading row from **left** to right. Chart III is now in position. Work Chart III to end of chart.

Next row: (RS). With A, K4 (6-4). *K2tog. K2. Rep from * to last 1 (3-1) st(s). K1 (3-1). 77 (81-89) sts.

Next row: *With A, P1. With MC, P1. Rep from * to last st. With A, P1.

Next row: With MC, knit.

Next row: With MC, P3 (2-3). *P2tog. P1. Rep from * to last 2 (1-2) st(s). P2 (1-2). 53 (55-61) sts.

Change to smaller needles and work 5 rows garter st (knit every row). Cast off knitways (WS).

Buttonhole Band: With RS of work facing, MC and smaller needles, pick up and knit 69 (75-81) sts.

Knit 3 rows.

Next row: (RS). (Buttonhole row). K3 (2-3). [Cast off 2 sts. K13 (15-16) (including st on needle after cast off)] 4 times. Cast off 2 sts. K4 (3-4).

Next row: Knit, casting on 2 sts over cast off sts.

Knit 1 row. Cast off knitways (WS).

Button Band: Work as given for Buttonhole Band, omitting all references to buttonholes.

FINISHING

Pin garment pieces to measurements and cover with a damp cloth allowing cloth to dry.

Sew sleeve seams. Sew raglan and underarm seams. Sew buttons to correspond to buttonholes.

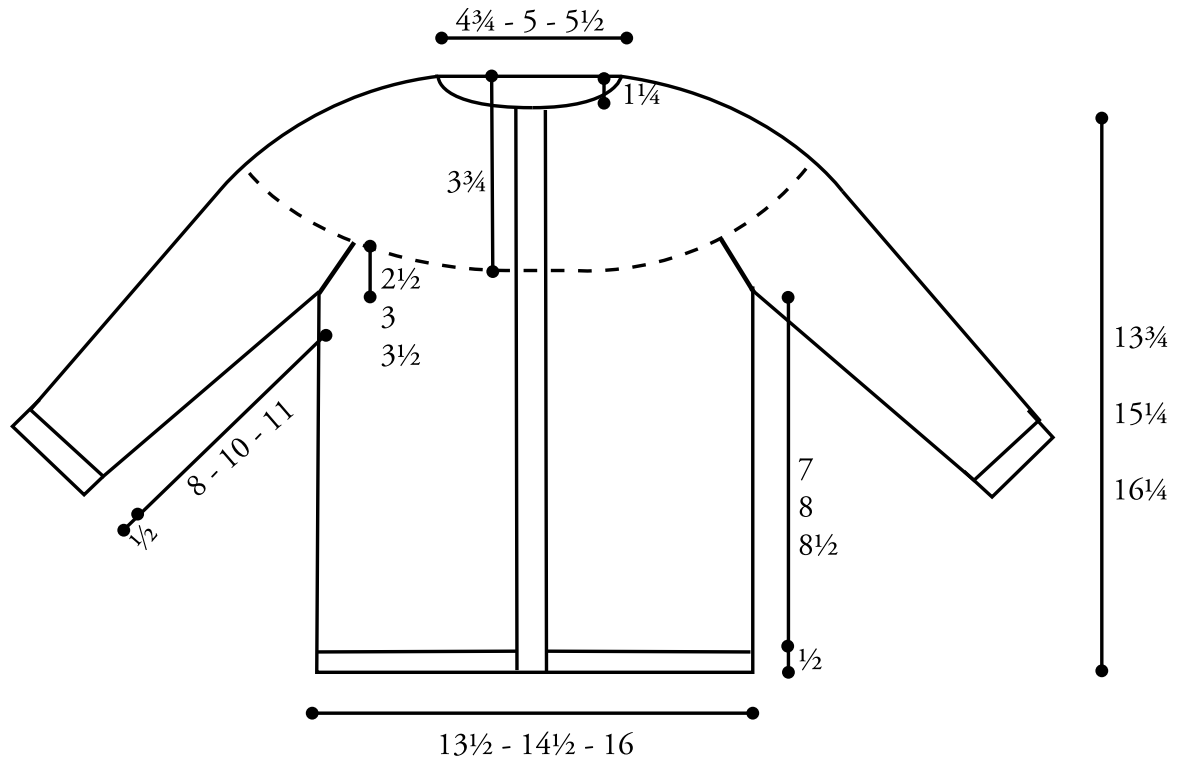


Chart I

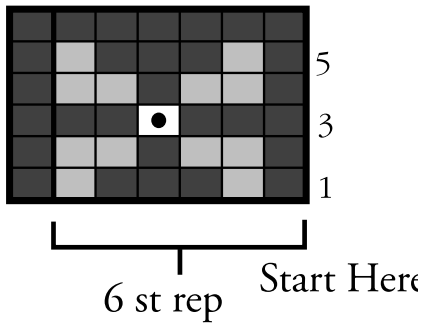


Chart II

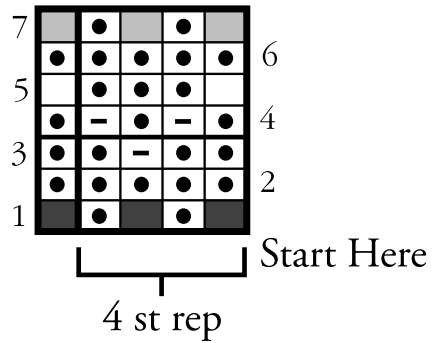
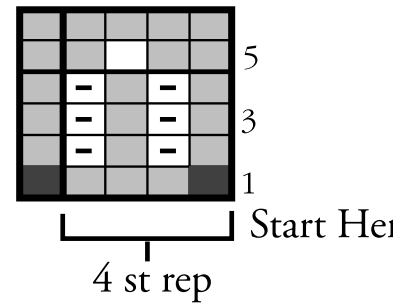


Chart III



Key

- = MC
- = Contrast A
- = Contrast B
- = Contrast C
- = Contrast D

Patons

... a part of your life.

P.O. Box 40, Listowel ON N4W 3H3