



KNIT | SKILL LEVEL: INTERMEDIATE

### ABBREVIATIONS

**Alt** = Alternate(ing)  
**Beg** = Beginning  
**Cont** = Continue(ity)  
**Dec** = Decreasing  
**Inc** = Increasing  
**K** = Knit  
**K2tog** = Knit next 2 stitches together  
**P** = Purl  
**Pat** = Pattern

**PM** = Place marker  
**Rem** = Remaining  
**Rep** = Repeat  
**RS** = Right side  
**St(s)** = Stitch(es)  
**Ssk** = Slip next 2 stitches knitwise one at a time. Pass them back onto left-hand needle, then knit through back loops together  
**Yo** = Yarn over

### SIZES

To fit chest measurement

**2 yrs**      **21" [53.5 cm]**  
**4 yrs**      **23" [58.5 cm]**  
**6 yrs**      **25" [63.5 cm]**  
**8 yrs**      **26½" [67.5 cm]**  
**10 yrs**     **28" [71 cm]**

### GAUGE

22 sts and 28 rows = 4 ins [10 cm] with larger needles in stocking st.

### INSTRUCTIONS

*The instructions are written for smallest size. If changes are necessary for larger size(s) the instructions will be written thus (.). Numbers for each size are shown in the same color throughout the pattern. When only one number is given in black, it applies to all sizes.*

### Finished chest

**2 yrs**      **26" [66 cm]**  
**4 yrs**      **27½" [70 cm]**  
**6 yrs**      **30 ins [76 cm]**  
**8 yrs**      **32" [81.5 cm]**  
**10 yrs**     **34½" [87.5 cm]**

### MATERIALS

Patons® Astra (1.75 oz/50 g; 161 yds/147 m)

Sizes	2	4	6	8	10	yrs
Main Color (MC) Black	4	5	5	6	6	balls
Contrast A Pink	1	1	2	2	2	ball(s)

Sizes 3.75 mm (U.S. 5) and 4 mm (U.S. 6) knitting needles **or size needed to obtain gauge.** 2 st holders. 6 buttons for sizes 2 and 4. Stitch markers. Yarn needle.

**Note:** When working from chart, carry yarn not in use loosely across WS of work but never over more than 5 sts. When it must pass over more than 5 sts, weave it over and under color in use on next st or at center point of sts it passes over. The colors are never twisted around one another.

## BACK

\*\*With MC and smaller needles, cast on **71** (75-83-87-95) sts.

**1st row:** (RS). K1. \*P1. K1. Rep from \* to end of row.

**2nd row:** P1. \*K1. P1. Rep from \* to end of row.

Rep last 2 rows once more.

Change to larger needles and beg with a knit row, proceed in stocking st until work from beg measures **1½** (2½-3½-4½-5½)" [**4** (6-9-11.5-14) cm], ending with RS facing for next row and inc 2 sts evenly across last row. **73** (77-85-89-97) sts.

**Next 14 rows:** Work rows 1 to 14 of Chart in stocking st, *reading knit rows from right to left and purl rows from left to right*, noting 4 st rep will be worked **18** (19-21-22-24) times.

See Chart on page 4.

**Shape armholes: Next row:** Keeping cont of chart, cast off **4** (4-8-8-8) sts beg of next 2 rows. **65** (69-69-73-81) sts. Cont working in Chart to end of chart.

**Next row:** (RS). With MC, knit, dec 2 sts evenly across **63** (67-67-71-79) sts.\*\*

Cont even until armhole measures **5** (5½-6-6-6½)" [**12.5** (14-15-15-16.5) cm], ending on RS row.

**Shape shoulders:** Cast off **18** (19-19-19-22) sts beg next 2 rows. Leave rem **27** (29-29-33-35) sts on a st holder.

## FRONT

Work from \*\* to \*\* as given for Back. With MC, cont even until armhole measures **4** (4-4½-4¾-5)" [**10** (10-11.5-12-12.5) cm], ending on RS row.

**Shape neck: Next row:** **K23** (25-25-25-29). K2tog (neck edge).

**Turn.** Leave rem sts on a spare needle.

Dec 1 st at neck edge on next **6** (4-4-4-4) rows, then on every following alt row **0** (1-4-4-4) time(s). **18** (19-19-19-22) sts.

Cont even until armhole measures **4** (4½-7-7½-8)" [**10** (11.5-18-19-20.5) cm], ending on RS row. Cast off.

With RS of work facing, slip next **13** (13-13-17-17) sts onto st holder for front neck. Rejoin MC to rem sts: ssk. Knit to end of row. **23** (25-26-27-31) sts.

Dec 1 st at neck edge on next **6** (6-4-4-4) rows, then on every following alt row **0** (1-3-4-4) time(s). **18** (19-19-19-22) sts.

Cont even until armhole measures **4** (4½-6-6-6½)" [**10** (11.5-15-15-16.5) cm], ending on WS row. Cast off.

## SLEEVES

With MC and smaller needles, cast on **51** (51-51-55-55) sts. Work 2 rows in (K1. P1) ribbing as given for Back.

Change to larger needles and beg with a knit row, work **4** (4-6-6-6) rows in stocking st.

**Next row:** (RS). K5. K2tog. [K**11** (11-11-12-12). K2tog] 3 times. K**5** (5-5-6-6). **47** (47-47-51-51) sts.

Work **1** (1-3-3-3) row(s) even.

**Next row:** K4. K2tog. [K**10** (10-10-11-11). K2tog] 3 times. K**5** (5-5-6-6). **43** (43-43-47-47) sts.

Work **1** (1-3-3-3) row(s) even.

**Next row:** K3. K2tog. [K**9** (9-9-10-10). K2tog] 3 times. K**5** (5-5-6-6). **39** (39-39-43-43) sts.

Inc 1 st at each end of needle on every following 4th row to **53** (57-59-47-53) sts, then every following 6th row to **55** (59-63-63-71) sts.

Cont even until work from beg measures **7½** (9½-11½-13-14½)" [**19** (24-29-33-37) cm], ending on RS row and inc 2 sts evenly across last row. **57** (61-65-65-73) sts.

Work rows 1 to 10 of Chart, *reading knit rows from right to left and purl rows from left to right*, noting 4 st rep will be worked **14** (15-16-16-18) times. PM at each end of last row.

**Sizes 2 and 4 only:** Work 11th to 14th rows of Chart. With MC, cast off.

**Sizes 6, 8 and 10 only:** Work 11th to 20th rows of Chart. Cast off.

**FINISHING:** Pin garment pieces to measurements. Cover with a damp cloth, leaving cloth to dry.

**Sizes 2 and 4 only: Back neckband:** With RS of Back facing, MC and smaller needles, K27 (29) from back st holder, dec 2 sts evenly across. 25 (27) sts.

**\*\*\*1st row:** (WS). P2. \*K1. P1. Rep from \* to last st. P1.

**2nd row:** K2. \*P1. K1. Rep from \* to last st. K1.

Rep last 2 rows once more, then 1st row once. Cast off in pat.\*\*\*

**Front neckband:** With RS of Front facing, MC and smaller needles, pick up and knit 12 (15) sts down left neck edge. K13 from front st holder, dec 2 sts evenly across. Pick up and knit 12 (15) sts up right neck edge. 35 (41) sts.

Work from \*\*\* to \*\*\* as given for Back neckband.

**Buttonhole bands:** With RS of Front facing, smaller needles and MC, pick up and knit 23 (25) sts evenly along right shoulder and side edge of neckband.

**1st to 3rd rows:** Work as given for Back neckband.

**4th row:** Rib 5 sts. [yo. K2tog. Rib 4 (5) sts] twice. yo. K2tog. Rib 4 sts.

**5th to 7th rows:** Work as given for Back neckband. Cast off in pat. Rep for left shoulder.

**Button bands:** With RS of Back facing, work as given for Buttonhole band, omitting all references to buttonholes.

Lap Buttonhole bands over Button bands. Sew buttons to correspond to buttonholes.

**Sizes 6, 8 and 10 only: Neckband:** Sew right shoulder seam.

With RS of work facing, MC and smaller needles, pick up and knit (15-15-16) sts down left front neck edge. K(13-17-17) from front st holder, dec 2 sts evenly across. Pick up and knit (15-15-16) sts up right front neck edge. K(29-33-35) from back st holder, dec 1 st at center. (69-77-81) sts.

**1st row:** (WS). P1. \*K1. P1. Rep from \* to end of row.

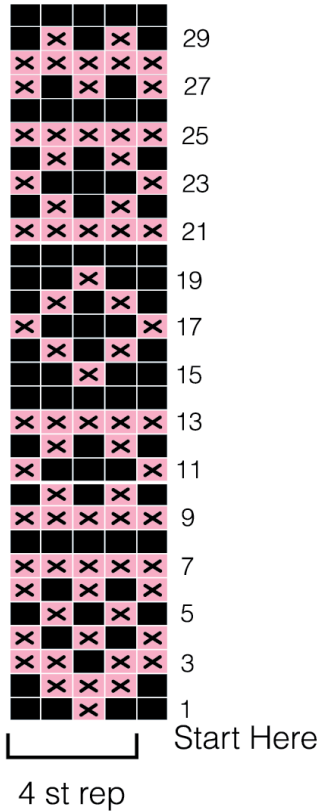
**2nd row:** K1. \*P1. K1. Rep from \* to end of row.

Rep last 2 rows twice more, then 1st row once. Cast off in pat.

Sew right shoulder and neckband seam.

**All sizes:** Sew in sleeves, placing rows above markers against cast off sts of armholes to form square armholes. Sew side and sleeve seams.

## Chart



### Key

- Main Color (MC)
- Contrast A

