

# Patons® Classic Wool



## Patons® Classic Wool CHILD'S SNOWFLAKE SWEATER

### SIZES

#### Chest measurement

|    |         |           |
|----|---------|-----------|
| 4  | 23 ins  | [58.5 cm] |
| 6  | 25½ ins | [65 cm]   |
| 8  | 27½ ins | [70 cm]   |
| 10 | 29 ins  | [73.5 cm] |

#### Finished chest

|    |        |           |
|----|--------|-----------|
| 4  | 28 ins | [71 cm]   |
| 6  | 30 ins | [76 cm]   |
| 8  | 32 ins | [81.5 cm] |
| 10 | 34 ins | [86.5 cm] |

### MATERIALS

Patons® Classic Wool (100 g)

#### Sizes

4 (6-8-10)

**Main color (MC)**

(77115 New Denim)

**3 (3-4-4) balls**

**Contrast A**

(229 Natural Mix)

**1 (1-1-1) ball**

**Contrast B**

(77117 Worn Denim)

**1 (1-1-1) ball**

Sizes 4 mm (U.S. 6) and 4½ mm (U.S. 7) knitting needles **or size needed to obtain tension.** 1 st holder and 7 buttons.

### TENSION

20 sts and 26 rows = 4 ins [10 cm] with larger needles in stocking st.

### INSTRUCTIONS

*The instructions are written for smallest size. If changes are necessary for larger sizes the instructions will be written thus ( ).*

**Note:** When working from chart, carry yarn not in use loosely across WS of work but never over more than 5 sts. When it must pass over more than 5 sts, weave it over and under color in use on next st or at center point of sts it passes over. The colors are never twisted around one another.

#### BACK

With MC and smaller needles, cast on 71 (75-81-85) sts.

**1st row:** (RS). K1. \*P1. K1. Rep from \* to end of row.

Rep last row for seed st pat until work from beg measures 1¼ (1¼-1½-1½) ins [3 (3-4-4) cm], ending with RS facing for next row.

Change to larger needles and proceed in stocking st until work from beg measures 10¼ (11¼-12½-13½) ins [26 (28.5-32-34.5) cm], ending with RS facing for next row.

**Shape armholes:** Cast off 8 (8-9-10) sts beg next 2 rows. 55 (59-63-65) sts.

Cont even until armhole measures 5¼ (5¾-6½-7½) ins [13 (14.5-16.5-19) cm], ending with RS facing for next row.

**Shape shoulders:** Cast off 7 (7-8-8) sts beg next 2 rows, then cast off 7 (8-8-8) sts beg following 2 rows. Leave rem 27 (29-31-33) sts on a st holder.

#### LEFT FRONT

\*\*With MC and smaller needles, cast on 39 (41-43-45) sts.

Work 1¼ (1¼-1½-1½) ins [3 (3-4-4) cm] in seed st pat as given for Back, ending with RS facing for next row.\*\*

Change to larger needles and proceed as follows:

**Next row:** Knit to last 7 sts. Seed st pat across last 7 sts.

**Next row:** Seed st pat across first 7 sts. Purl to end of row.

Rep last 2 rows until work from beg measures 10¼ (11¼-12½-13½) ins [26 (28.5-32-34.5) cm], ending with RS facing for next row.

**Shape armhole:** Cast off 8 (8-9-10) sts beg next row. 31 (33-34-35) sts.

Cont even (keeping 7 sts at front edge in seed st pat) until armhole measures 3¼ (3¾-4¼-5¼) ins [8.5 (9.5-11-13) cm], ending with WS facing for next row.

**Shape neck: Next row:** Cast off 9 (10-10-10) sts. Place a marker on 4th st along cast off edge. Purl to end of row.

Dec 1 st at neck edge on next 8 (8-8-9) rows. 14 (15-16-16) sts.

Cont even until armhole measures same length as Back to beg of shoulder shaping, ending with RS facing for next row.

**Shape shoulder:** Cast off 7 (7-8-8) sts beg next row. Work 1 row even. Cast off rem 7 (8-8-8) sts.

Place markers for 7 buttons along front edge, having bottom button 1 inch [2.5 cm] above cast on edge, top button ½ inch [1 cm] below neck edge and rem 5 buttons spaced evenly between.

## RIGHT FRONT

**Note:** Work buttonholes on Right Front to correspond to markers on Left Front as follows:

**Next row:** (RS). K1. P1. K1. Cast off 2 sts. K1. P1. Knit to end of row.

**Next row:** Work in pat, casting on 2 sts over cast off sts.

Work from \*\* to \*\* as given for Left Front (working buttonhole as noted above).

Change to larger needles and proceed as follows:

**Next row:** Seed st pat across first 7 sts. Knit to end of row.

**Next row:** Purl to last 7 sts. Seed st pat across last 7 sts.

Rep last 2 rows until work from beg measures 10¼ (11¼-12½-13½) ins [26 (28.5-32-34.5) cm] (working buttonholes as before), ending with WS facing for next row.

**Shape armhole:** Cast off 8 (8-9-10) sts beg next row. 31 (33-34-35) sts.

Cont even (keeping 7 sts at front edge in seed st pat and working buttonholes as before) until armhole measures 3¼ (3¾-4¼-5¼) ins [8.5 (9.5-11-13) cm], ending with RS facing for next row.

**Shape neck: Next row:** Cast off 9 (10-10-10) sts. Place a marker on 4th st along cast off edge. Knit to end of row.

Work 1 row even.

Dec 1 st at neck edge on next 8 (8-8-9) rows. 14 (15-16-16) sts.

Cont even until armhole measures same length as Back to beg of shoulder shaping, ending with WS facing for next row.

**Shape shoulder:** Cast off 7 (7-8-8) sts beg next row. Work 1 row even. Cast off rem 7 (8-8-8) sts.

## SLEEVES

With MC and smaller needles cast on 39 (41-43-45) sts. Work 1¼ (1¼-1½-1½) ins [3 (3-4-4) cm] in seed st pat as given for Back, ending with RS facing for next row.

Change to larger needles and proceed in stocking st, inc 1 st each end of needle on 9th (9th-13th-5th) row, then every following 8th (8th-6th-6th) row until there are 49 (53-61-71) sts.

Cont even until work from beg measures 10 (11-13-15) ins [25.5 (28-33-38) cm], ending with RS facing for next row. Place markers at each end of last row.

Work a further 10 (10-10-12) rows even.

**Shape top:** Cast off 9 (10-12-14) sts beg next 4 rows. Cast off rem 13 (13-13-15) sts.

## POCKETS (make 2)

With MC and smaller needles, cast on 25 (25-27-27) sts. Work 2 rows in seed st pat as given for Back.

Change to larger needles and work Chart in stocking st to end of chart reading **knit** rows from **right** to left and **purl** rows from **left** to right.

Change to smaller needles and proceed as follows:

**Next row:** (WS). With MC, purl. Work 4 rows in seed st pat. Cast off in pat.

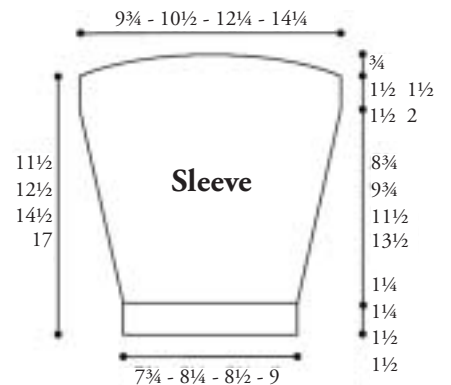
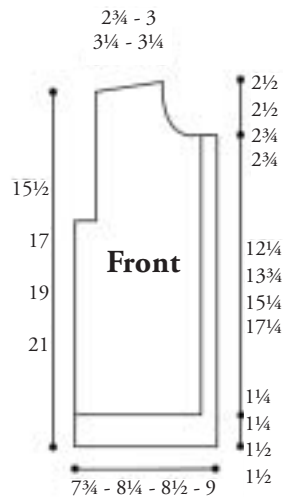
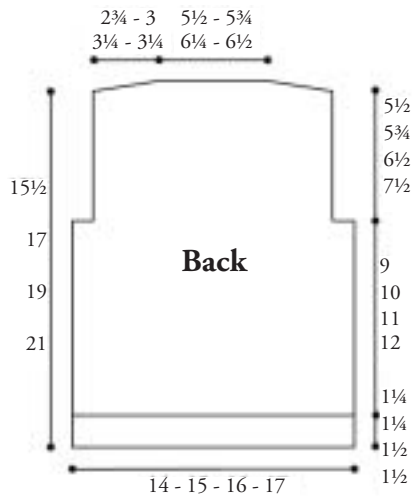
**Pocket Side Edging:** With RS of Pocket facing, MC and smaller needles, pick up and knit 24 sts along side edge of Pocket. Cast off knitways (WS).

## FINISHING

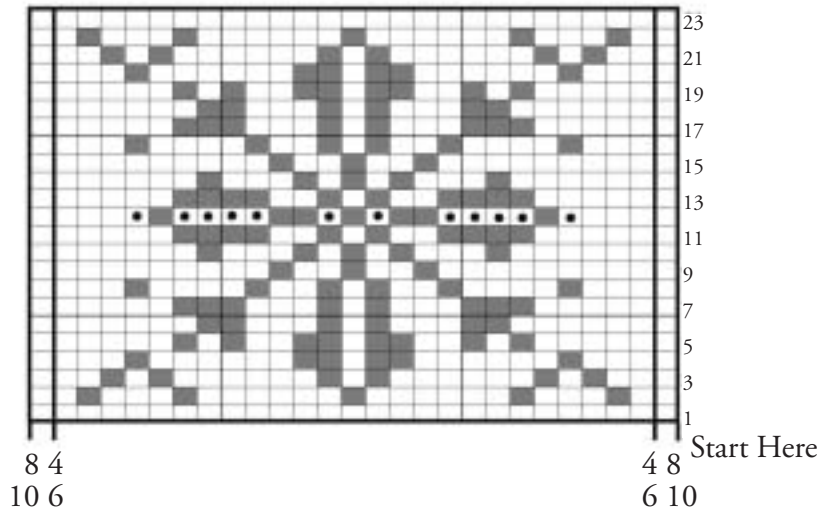
Pin garment pieces to measurements and cover with a damp cloth, leaving cloth to dry.

**Collar:** Sew shoulder seams. With RS of work facing, MC and smaller needles, pick up and knit 17 (18-19-19) sts up right front neck edge from marker to shoulder. K27 (29-31-33) from Back st holder, dec 2 sts evenly across. Pick up and knit 17 (18-19-19) sts from shoulder to marker on left front neck edge. 59 (63-67-69) sts. Work 3¼ (3¼-3½-3¾) ins [8.5 (8.5-9-9.5) cm] in seed st pat as given for Back. Cast off in pat.





Sew in sleeves placing rows above markers along cast off edges of Fronts and Back to form square armholes. Sew side and sleeve seams. Sew on pockets in position as illustrated. Sew buttons to correspond to buttonholes.



**Chart**



**Key**

-  = MC
-  = Contrast A
-  = Contrast B
-  = With B, purl on RS and knit on WS



... a part of your life.

P.O. Box 40 Listowel ON N4W 3H3