



INTERMEDIATE

SIZES

To fit chest measurement

4	23" [58 cm]
6	24½" [62 cm]
8	26" [66 cm]
10	28" [71 cm]

Finished chest

4	28" [71 cm]
6	30" [76 cm]
8	32" [81 cm]
10	34" [86 cm]

GAUGE

20 sts and 26 rows = 4" [10 cm] in stocking stitch with larger needles.

INSTRUCTIONS

The instructions are written for smallest size. If changes are necessary for larger sizes the instructions will be written thus (). When only one number is given, it applies to all sizes. For ease in working, circle all numbers pertaining to your size.

Note: When working from charts with Fair Isle technique, carry color not in use loosely across WS of work but never over more than 5 sts. When it must pass over more than 5 sts, weave it loosely over and under color in use on WS.

Work Maple Leaf Motif Chart using intarsia technique. When working from chart, wind small balls of the colors to be used, one for each separate area of color in the design. Start new colors at appropriate points. To change colors, twist the two colors around each other where they meet, on WS, to avoid a hole.

FRONT

**With MC and smaller needles, cast on 67 (73-77-83) sts.

1st row: (RS). K1. *P1. K1. Rep from * to end of row.

2nd row: P1. *K1. P1. Rep from * to end of row.

Rep last 2 rows of (K1. P1) ribbing for 2 (2-2½-2½)" [5 (5-6-6) cm], ending on a WS row and inc 4 sts evenly across last row. 71 (77-81-87) sts.

MATERIALS

Patons® Canadiana™ (3.5 oz/100 g; 205 yds/187 m)

Sizes	4	6	8	10	
Main Color (MC) Cardinal (10707)	3	4	4	5	balls
Contrast A Winter White (10006)	1	1	1	1	ball

Sizes U.S. 5 (3.75 mm) and U.S. 7 (4.5 mm) knitting needles **or size needed to obtain gauge.** 2 stitch holders. 2 stitch markers.

ABBREVIATIONS: yarnspirations.com/abbreviations

Alt = Alternate(ing)	Dec = Decrease(ing)	Rem = Remain(ing)
Approx = Approximate(ly)	Inc = Increase(ing)	Rep = Repeat
Beg = Begin(ning)	K = Knit	RS = Right side
Cont = Continue(ity)	P = Purl	St(s) = Stitch(es)
	Pat = Pattern	WS = Wrong side



Change to larger needles and work Chart I to end of chart, reading **knit** rows from **right** to left and **purl** rows from **left** to right (**do not** work 'Canada'—it should be embroidered in duplicate st after sweater is complete). See charts on page 4.

Note: Work Fair Isle Pat below as follows: carry color not in use loosely across WS of work but never over more than 5 sts. When it must pass over more than 5 sts, weave it loosely over and under color in use on WS.

Proceed in pat as follows:

1st row: (RS). With MC, knit.

2nd row: With MC, purl.

3rd row: With MC, K3 (6-0-3).

*With A, K1. With MC, K7. Rep from to last 4 (7-1-4) st(s). With A, K1. With MC, K3 (6-0-3).

4th row: With MC, P2 (5-1-2). (With A, P1. With MC, P5) 0 (0-1-0) time. *With A, P1. With MC, P1. With A, P1. With MC, P5. Rep from * to last 5 (0-2-5) sts. (With A, P1. With MC, P1. With A, P1) 1 (0-0-1) time. With A, P0 (0-1-0). With MC, P2 (0-1-2).

5th row: As 3rd row.

6th row: As 2nd row.

7th row: As 1st row.

8th and 9th rows: Rep last 2 rows once more.

10th row: With MC, P7 (2-4-7). *With A, P1. With MC, P7. Rep from * to last 0 (3-5-0) sts. With A, P0 (1-1-0). With MC, P0 (2-4-0).

11th row: With MC, K6 (1-3-6).

*With A, K1. With MC, K1. With A, K1. With MC, K5. Rep from * to last 1 (4-6-1) st(s). With A, K0 (1-1-0). With B, K1. With A, K0 (1-1-0). With MC, K0 (1-3-0).

12th row: As 10th row.

13th row: As 1st row.

14th row: As 2nd row.

These 14 rows complete Fair Isle Pat.**

Work 2 rows more in Fair Isle pat, ending on a 2nd row of pat.

Note: Work Maple Leaf Motif Chart II using intarsia technique.

Keeping cont of pat, place Chart II as follows:

1st row: (RS). Pat across 10 (13-15-18) sts. Knit 1st row of Chart II across next 19 sts, reading row from **right** to left. Pat to end of row.

2nd row: Pat across 42 (45-47-50) sts. Purl 2nd row of Chart II across next 19 sts, reading row from **left** to right. Pat to end of row. Chart II is now in position.

Size 4 only: Cont in pat, keeping cont of Chart II, until 14 rows of chart have been completed, ending on a WS row.

Keeping cont of Fair Isle pat, place second Chart II as follows:

1st row: (RS). Pat across 10 sts. Knit 15th row of Chart II across next 19 sts. Pat across next 13 sts. Knit 1st row of Chart II across next 19 sts. Pat to end of row.

2nd row: Pat across 10 sts. Purl 2nd row of Chart II across next 19 sts. Pat across next 13 sts. Purl 16th row of Chart II across next 19 sts. Pat to end of row.

Chart II is now in position.

Keeping cont of Chart II, work 4 rows more in pat. [First Leaf (Chart II) is complete].

Next row: Pat across 42 sts. Knit 7th row of Chart II across next 19 sts. Pat to end of row.

Next row: Pat across 10 sts. Purl 8th row of Chart II across next 19 sts. Pat to end of row.

Work 2 rows more in pat, ending on a WS row.

All sizes: Cont even in pat until Chart II is complete.

Sizes 6, 8 and 10 only: Work a further (8-8-22) rows of Fair Isle pat, ending on a 2nd row of pat.

Keeping cont of pat, place second Chart II as follows:

1st row: (RS). Pat across (45-47-58) sts. Knit 1st row of Chart II across next 19 sts. Pat to end of row.

2nd row: Pat across (13-15-10) sts. Purl 2nd row of Chart II across next 19 sts. Pat to end of row.

Charts II is now in position.

Cont in pat, working appropriate rows of Chart II until (16-20-18) rows of Chart II have been completed.

Size 8 only: Work 2 rows even in Fair Isle pat, ending on a WS row.

Sizes 6 and 10 only: During neck shaping, keep cont of Chart II. When Chart II has been completed, cont in Fair Isle pat only.

All sizes: Shape neck: 1st row: (RS). Pat across 30 (33-35-38) sts (neck edge). **Turn.** Leave rem sts on a spare needle.

Dec 1 st at neck edge on next 4 rows, then every following alt row 3 (3-4-5) times more. 23 (26-27-29) sts.

Work 5 rows even in pat, ending on a WS row.



Shape shoulder: Cast off 8 (9-9-10) sts beg next and following alt row. Purl 1 row even. Cast off rem 7 (8-9-9) sts.

With RS facing, slip next 11 sts onto a st holder. Join yarn to rem sts and pat to end of row.

Dec 1 st at neck edge on next 4 rows, then every following alt row 3 (3-4-5) times more. 23 (26-27-29) sts.

Work 6 rows even in pat, ending on a RS row.

Shape shoulder: Cast off 8 (9-9-10) sts beg next and following alt row. Knit 1 row even. Cast off rem 7 (8-9-9) sts.

BACK

Note: Back does not have Maple Leaves (Chart II).

Work from ** to ** as given for Front.

Cont even in pat until work from beg measures same length as

Front to beg of shoulder shaping, ending on a WS row.

Shape shoulders: Cast off 8 (9-9-10) sts beg next 4 rows, then cast off 7 (8-9-9) sts beg next 2 rows. Leave rem 25 (25-27-29) sts on a st holder.

SLEEVES

With MC and smaller needles, cast on 39 (41-43-45) sts.

Work 2 (2-2½-2½)" [5 (5-6-6) cm] in (K1, P1) ribbing as given for Front, ending on a WS row and inc 8 (10-8-10) sts evenly across last row. 47 (51-51-55) sts.

Change to larger needles and proceed in pat as follows:

1st row: (RS). With MC, knit.

2nd row: With MC, purl.

3rd row: With MC, K0 (1-1-3). With A, K0 (1-1-1). *With MC, K7. With A, K1. Rep from * to last 7 (1-1-3) st(s). With MC, K7 (1-1-3).

4th row: (With A, P1. With MC, P5) 1 (0-0-0) time. With MC, P0 (0-0-2). *With A, P1. With MC, P1. With A, P1. With MC, P5. Rep from * to last 1 (3-3-5) st(s). With A, P1. With

MC, P0 (1-1-1). With A, P0 (1-1-1). With MC, P0 (0-0-2).

Fair Isle Pat is now in position. Cont in Fair Isle Pat as placed in last 4 rows, inc 1 st each end of needle on next and every following 6th (8th-6th-6th) row to 61 (65-71-81) sts, taking inc sts into pat.

Cont even in Fair Isle Pat until work from beg measures 11 (12½-14-16)" [28 (32-35-41) cm], ending on a WS row. Cast off.

FINISHING

Pin pieces to measurements. Cover with damp cloth, leaving cloth to dry.

Neckband: Sew right shoulder seam. With RS facing, MC and smaller needles, pick up and knit 16 (16-20-20) sts down left front neck edge. K11 from Front st holder. Pick up and knit 16 (16-20-20) sts up right front neck edge. K25 (25-27-29) from back st holder, dec 1 st at center. 67 (67-77-79) sts.

Work 2 (2-2½-2½)" [5 (5-6-6) cm] in (K1, P1) ribbing as given for Front, ending on a WS row. Cast off loosely in ribbing.

Sew left shoulder seam and neckband seam. Fold neckband in half to WS and sew loosely in position. Place markers on front and back side edges 6 (6½-7-8)" [15 (17-18-20) cm] down from shoulder seams. Sew in sleeves between markers. Sew side and sleeve seams.

Chart I

- Key
- MC
 - Contrast A
 - ▣ MC in duplicate st

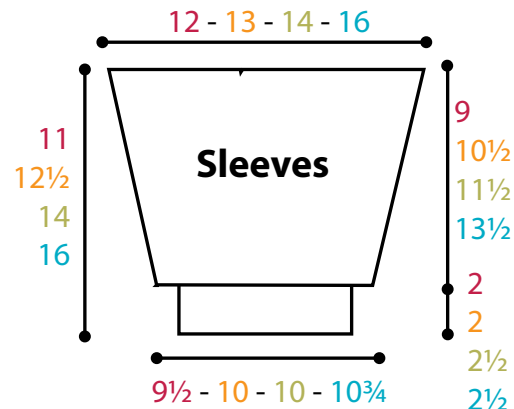
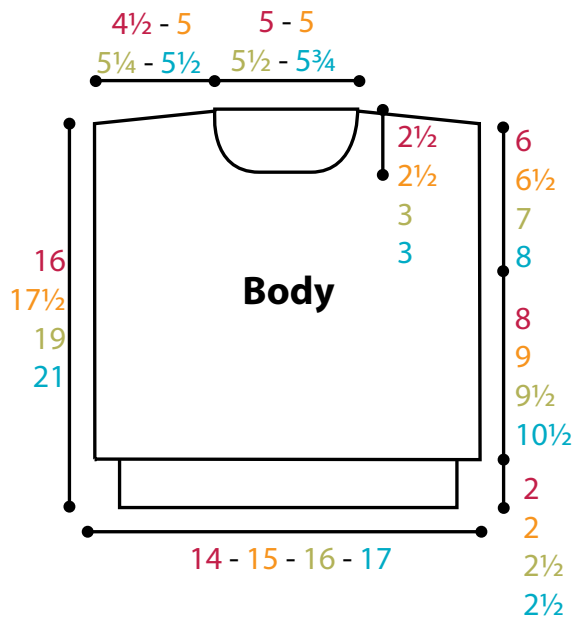
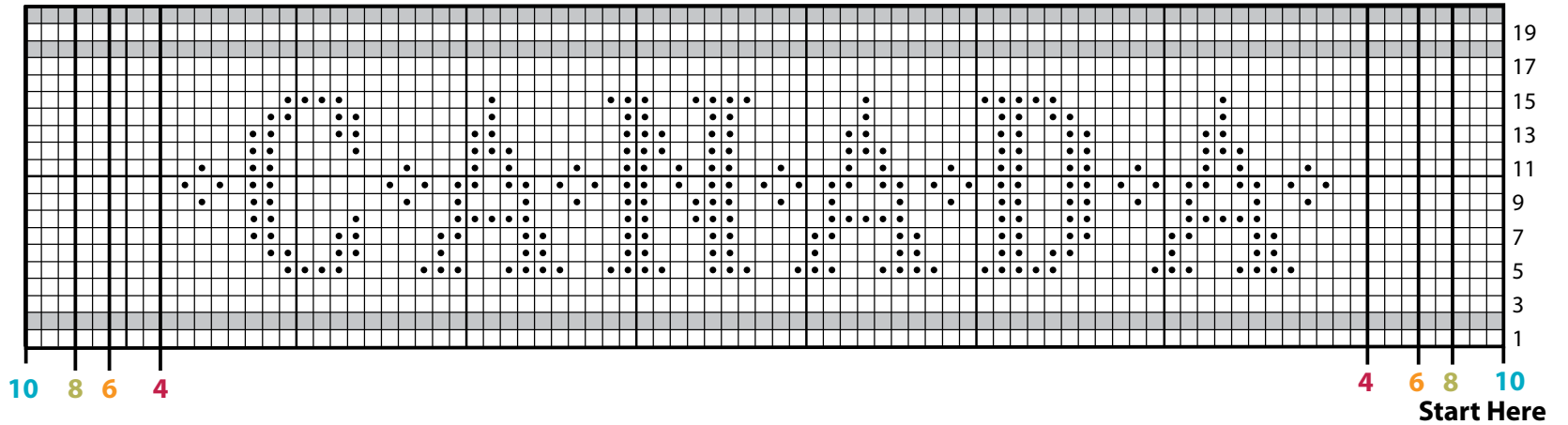
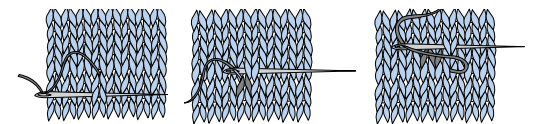
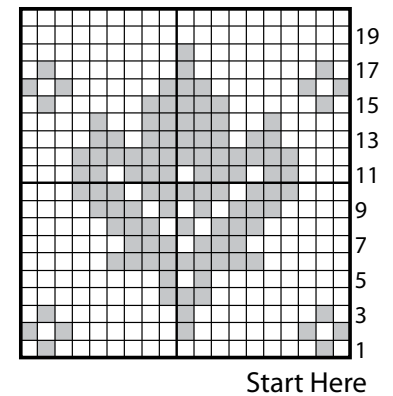


Chart II

- Key
- MC
 - Contrast A



Duplicate Stitch Diagram