



### SIZES

#### Pullover

##### To fit chest measurement

4	23"	[58.5 cm]
6	25"	[63.5 cm]
8	26½"	[67.5 cm]
10	28"	[71 cm]
12	30"	[76 cm]

##### Finished chest

4	26"	[66 cm]
6	28½"	[72.5 cm]
8	30½"	[77.5 cm]
10	32½"	[82.5 cm]
12	35"	[89 cm]

**Hat:** To fit 4/6 (8/12) yrs.

### GAUGE

22 sts and 28 rows = 4" [10 cm] with larger needles in stocking st.

### INSTRUCTIONS

*The instructions are written for smallest size. If changes are necessary for larger sizes the instructions will be written thus (.). Numbers for each size are shown in the same color throughout the pattern. When only one number is given in black, it applies to all sizes.*

### PULLOVER

**Note:** Garment is worked from neck edge down in one piece.

### YOKE

**Neckband:** With set of four smaller double-pointed needles and A, cast on **84** (84-92-104-112) sts. Join in rnd, placing marker on first st.

**1st rnd:** \*K2. P2. Rep from \* around. Rep this rnd of (K2. P2) ribbing for 2" [5 cm]. Break A.

Change to larger set of needles.

**1st rnd:** With MC, knit.  
**2nd rnd:** \*K**14** (14-18-20-28). M1. Rep from \* to last **0** (0-2-4-0) sts. K**0** (0-2-4-0). **90** (90-97-109-116) sts.

**Sizes 8, 10 and 12 only:** **3rd rnd:** Knit.  
**4th rnd:** \*K(19-20-29). M1. Rep from \* to last (2-9-0) sts. K(2-9-0). (102-114-120) sts.

**All sizes:** Work Chart I to end of chart, reading rows from **right** to **left**, noting 6-st rep will be worked **15** (15-17-19-20) times. **240** (240-272-304-320) sts. See Chart I on page 2.

**Note:** Move sts to larger circular needle when necessary.

### MATERIALS

Patons® Classic Wool DK Superwash™ (1.75 oz /50 g; 125 yds /114 m)

#### PULLOVER

Sizes	4	6	8	10	12	
Main Color (MC) Red (12705)	3	4	4	5	5	balls
Contrast A Black (12040)	2	2	3	3	3	balls
Contrast B Aran (12008)	1	2	2	2	2	ball(s)

#### HAT

Sizes	4/6	8/12	yrs	
Main Color (MC) Red (12705)	1	1	ball	
Contrast A Black (12040)	1	1	ball	
Contrast B Aran (12008)	1	1	ball	

Sizes U.S. 4 (3.5 mm) and U.S. 6 (4 mm) circular knitting needles 20" [50 cm] long. Set of four sizes U.S. 4 (3.5 mm) and U.S. 6 (4 mm) double-pointed knitting needles **or size needed to obtain gauge**. 4 stitch markers.



**Sizes 4 and 10 only:** With MC, knit **2 (10)** rnds even.

**Sizes 6, 8 and 12 only: Next rnd:** With MC, \*K(**20-68-80**). M1. Rep from \* around. (**252-276-324**) sts.

Knit (**4-6-10**) rnds even.

**Next rnd:** With MC, \*K(**21-69-81**). M1. Rep from \* around. (**264-280-328**) sts.

**All sizes: Divide for Body and Sleeves:** Slip first **52 (58-62-68-74)** sts onto length of yarn for right sleeve. Cast on **4 (4-6-6-6)** sts. K**68 (74-78-84-90)** for front. Slip next **52 (58-62-68-74)** sts onto length of yarn for left sleeve. Cast on **4 (4-6-6-6)** sts. K**68 (74-78-84-90)** for back. Join in rnd, placing marker on first st. **144 (156-168-180-192)** for Body sts.

**Body:** With MC, knit in rnds until work from dividing rnd measures **6½ (7½-8-9-10½)" [16.5 (19-20.5-23-26.5) cm]**.

**Sizes 6 and 10 only:** \*K(**39-45**). M1. Rep from \* around. (**160-184**) sts.

**All sizes:** Work Chart II to end of chart, *reading rows from right to left*, noting 8-st rep will be worked **18 (20-21-23-24)** times. Break MC and B.

Change to smaller needle, A and knit 2 rnds.

Proceed in (K2. P2) ribbing as given for neckband for 2" [5 cm]. Cast off in ribbing.

### SLEEVES

Join MC to right sleeve sts and with larger set of double-pointed needles, K**52 (58-62-68-74)**. Pick up and knit **4 (4-6-6-6)** sts. Join in rnd, placing marker after **2nd (2nd-3rd-3rd-3rd)** picked up st. **56 (62-68-74-80)** sts.

Knit **16 (12-12-6-6)** rnds even.

Dec 1 st at each side of marker on next and every following 6th rnd until there are **50 (54-60-62-66)** sts, then every following 4th rnd until there are **44 (44-48-48-48)** sts.

Knit even in rnds until work from dividing rnd measures **7 (8-9-10-11½)" [18 (20.5-23-25.5-29) cm]**.

Work Chart III to end of chart, *reading rows from right to left*, noting 2-st rep will be worked **22 (22-24-24-24)** times. Break MC and B.

Change to smaller set of needles and with A, knit 2 rnds.

Proceed in (K2. P2) ribbing as given for neckband for 2" [5 cm]. Cast off in ribbing.

### HAT

With A and set of 4 smaller needles, cast on **96 (100)** sts. Divide sts on 3 needles.

Join in rnd, placing a marker on first st.

Work 2½" [6 cm] in (K2. P2) ribbing, inc **0 (4)** sts evenly around last rnd. **96 (104)** sts. Place a marker at end of last rnd.

Change to set of 4 larger needles.

Knit 2 rnds.

Work Chart II to end of chart, *reading rows from right to left* and noting 8-st rep will be worked **12 (13)** times. Break A and B.

With MC, knit in rnds until work from marker measures **4½ (5)" [11.5 (12.5) cm]**.

**Shape top: 1st rnd:** \*K6. K2tog. Rep from \* around. **84 (91)** sts.

**2nd and alt rnds:** Knit.

**3rd rnd:** \*K5. K2tog. Rep from \* around. **72 (78)** sts.

**5th rnd:** \*K4. K2tog. Rep from \* around. **60 (65)** sts.

**7th rnd:** \*K3. K2tog. Rep from \* around. **48 (52)** sts.

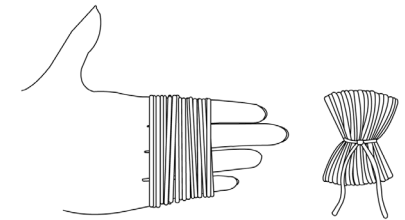
**9th rnd:** \*K2. K2tog. Rep from \* around. **36 (39)** sts.

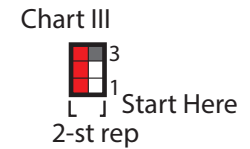
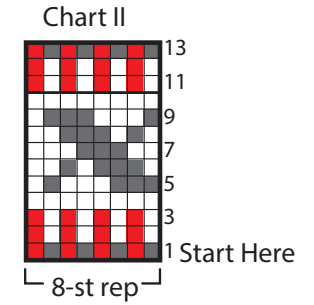
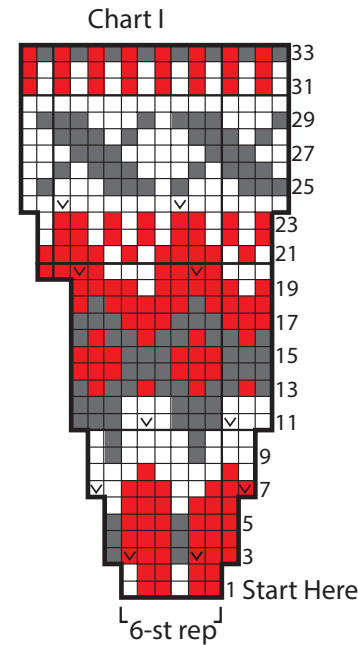
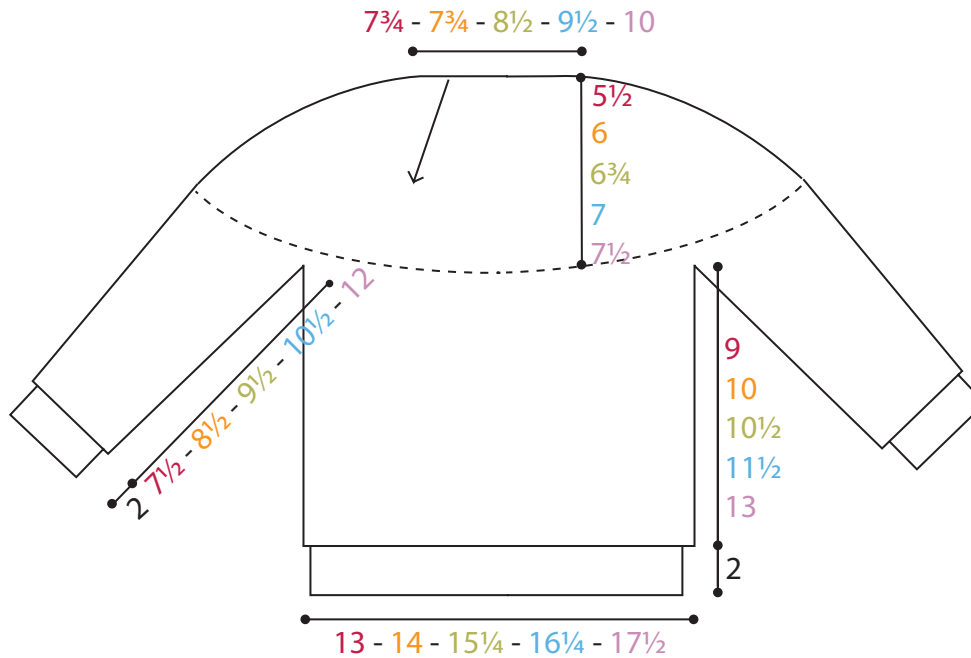
**11th rnd:** \*K1. K2tog. Rep from \* around. **24 (26)** sts.

**12th rnd:** \*K2tog. Rep from \* around. **12 (13)** sts.

Break yarn, leaving a long end. Draw end tightly through rem sts.

**Pompom:** Wind 2 strands of A around 4 fingers 100 times. Remove from fingers and tie tightly in center. Cut through both sides of loops. Trim to a smooth round shape. Sew securely to top of Hat.





Key

- = Main Color (MC)
- = Contrast A
- = Contrast B
- ☒ = M1

ABBREVIATIONS: [www.yarnspirations.com/abbreviations](http://www.yarnspirations.com/abbreviations)

- Alt** = Alternate
- Dec** = Decrease(ing)
- Inc** = Increase(ing)
- Inc1** = Increase 1 stitch by knitting into front and back of next stitch
- K** = Knit
- K2tog** = Knit next 2 stitches together
- M1** = Make 1 stitch by picking up horizontal loop lying before next stitch and knitting into back of loop.
- P** = Purl
- Rem** = Remaining
- Rep** = Repeat
- Rnd(s)** = Round(s)
- St(s)** = Stitch(es)

