



PATONS® CLASSIC WOOL DK SUPERWASH™ BUS STOP CARDIGAN (TO KNIT)

SIZES

To fit chest measurement

4	23"	[58.5 cm]
6	25"	[63.5 cm]
8	26½"	[67.5 cm]
10	28"	[71 cm]
12	30"	[76 cm]

Finished chest

4	26"	[66 cm]
6	28"	[71 cm]
8	30"	[76 cm]
10	32"	[81.5 cm]
12	34"	[86.5 cm]

MATERIALS

Patons® Classic Wool DK Superwash™

(50 g/1.75 oz; 114 m/125 yds)

Sizes **4 6 8 10 12** yrs
Pumpkin (12630) **7 7 8 9 10** balls

Sizes U.S. 4 (3.5 mm) and U.S. 6 (4 mm) knitting needles. Size U.S. 4 (3.5 mm) circular knitting needle 20" [50 cm] long **or size needed to obtain tension.** Cable needle. Stitch holder. 5 buttons.

TENSION

22 sts and 28 rows = 4" [10 cm] with larger needles in stocking st.

STITCH GLOSSARY: www.patonsyarns.com/abbreviations

- Alt** = Alternate(ing)
- Approx** = Approximately
- Beg** = Beginning
- C4B** = Slip next 2 stitches onto cable needle and leave at back of work. K2, then K2 from cable needle.
- C4F** = Slip next 2 stitches onto cable needle and leave at front of work. K2, then K2 from cable needle.
- C6B** = Slip next 3 stitches onto cable needle and leave at back of work. K3, then K3 from cable needle.
- C6F** = Slip next 3 stitches onto cable needle and leave at front of work. K3, then K3 from cable needle.
- Cont** = Continue(ity)
- Dec** = Decrease(ing)
- Inc** = Increase(ing)
- Inc1** = Increase 1 stitch by knitting into front and back of next stitch
- K1tbl** = Knit into back of next stitch
- K** = Knit
- K2tog** = Knit next 2 stitches together

M1 = Make 1 stitch by picking up horizontal loop lying before next stitch and knitting into back of loop



- P** = Purl
- P1tbl** = Purl into back of next stitch
- Pat** = Pattern
- Rem** = Remaining
- Rep** = Repeat
- RS** = Right side
- St(s)** = Stitch(es)
- T4B** = Slip next 2 stitches onto cable needle and leave at back of work. K2, then P2 from cable needle.
- T4F** = Slip next 2 stitches onto cable needle and leave at front of work. P2, then K2 from cable needle.
- WS** = Wrong side

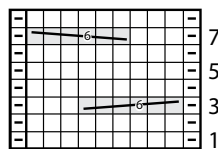
INSTRUCTIONS

The instructions are written for smallest size. If changes are necessary for larger sizes the instructions will be written thus (.). Numbers for each size are shown in the same color throughout the pattern. When only one number is given in black, it applies to all sizes.

Panel Pat A (worked over 11 sts).

- 1st row:** (RS). P1. K9. P1.
 - 2nd and alt rows:** K1. P9. K1.
 - 3rd row:** P1. C6B. K3. P1.
 - 5th row:** As 1st row.
 - 7th row:** P1. K3. C6F. P1.
 - 8th row:** As 2nd row.
- These 8 rows form Panel Pat A.

Panel Pat A Chart



Start Here

Key

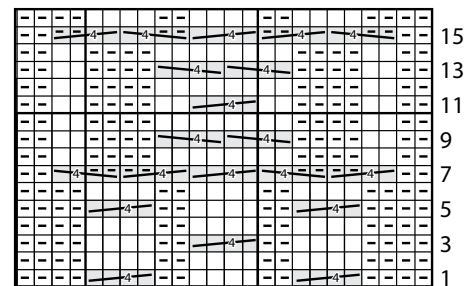
- ☐ = Knit on RS rows. Purl on WS rows.
- ☒ = Purl on RS rows. Knit on WS rows.

- = C4B
- = C4F
- = C6B
- = C6F
- = T4B
- = T4F

Panel Pat B (worked over 24 sts).

- 1st row:** P4. C4B. P2. K4. P2. C4B. P4.
 - 2nd row:** K4. P4. K2. P4. K2. P4. K4.
 - 3rd row:** P4. K4. P2. C4B. P2. K4. P4.
 - 4th row:** As 2nd row.
 - 5th and 6th rows:** As 1st and 2nd rows.
 - 7th row:** P2. T4B. T4F. C4B. T4B. T4F. P2.
 - 8th row:** K2. P2. K4. P8. K4. P2. K2.
 - 9th row:** P2. K2. P4. (C4F) twice. P4. K2. P2.
 - 10th row:** As 8th row.
 - 11th row:** P2. K2. P4. K2. C4B. K2. P4. K2. P2.
 - 12th row:** As 8th row.
 - 13th and 14th rows:** As 9th and 10th rows.
 - 15th row:** P2. T4F. T4B. C4B. T4F. T4B. P2.
 - 16th row:** As 2nd row.
- These 16 rows form Panel Pat B.

Panel Pat B Chart



Start Here

Patons®
Classic Wool
DK SUPERWASH
...a part of your life.

P.O. Box 40, Listowel ON N4W 3H3

www.patonsyarns.com



BUS STOP CARDIGAN 1 of 3

BACK

With smaller needles, cast on **78 (82-86-90-94)** sts.

1st row: (RS). *K2. P2. Rep from * to last 2 sts. K2.

2nd row: *P2. K2. Rep from * to last 2 sts. P2. Rep last 2 rows of (K2. P2) ribbing for 2" [5 cm], ending on a 1st row.

Next row: (WS). *Rib across 3 sts. M1. Rep from * to last **15 (7-11-3-7)** sts. Rib to end of row. **99 (107-111-119-123)** sts.

Change to larger needles and proceed in pat as follows:

1st row: (RS). P2. (K1tbl. P1) **4 (6-7-9-10)** times. K1tbl. Work 1st row Panel Pat B across next 24 sts. (K1tbl. P1) 4 times. K1tbl. Work 1st row Panel Pat A across next 11 sts. (K1tbl. P1) 4 times. K1tbl. Work 1st row Panel Pat B across next 24 sts. (K1tbl. P1) **5 (7-8-10-11)** times. P1.

2nd row: **K10 (14-16-20-22)**. P1tbl. Work 2nd row Panel Pat B across next 24 sts. P1tbl. K7. P1tbl. Work 2nd row Panel Pat A across next 11 sts. P1tbl. K7. P1tbl. Work 2nd row Panel Pat B across next 24 sts. P1tbl. **K10 (14-16-20-22)**.

These 2 rows form pat. Panel Pats A and B are now in position.

Cont in pat, keeping cont of Panel Pats, until work from beg measures **10¼ (11½-12-12½-13½)" [26 (29-30.5-32-34.5) cm]**, ending on a WS row.

Shape armholes: Keeping cont of pat, cast off **5 (6-6-7-8)** sts at beg of next 2 rows. **89 (95-99-105-107)** sts.

Dec 1 st each end of next and every following alt row **3 (4-4-6-6)** times more. **81 (85-89-91-93)** sts.

Cont even in pat until armhole measures **5¼ (5½-6-6½-7¼)" [13 (14-15-16.5-18.5) cm]**, ending on a WS row.

Shape shoulders: Keeping cont of pat, cast off **10 (10-11-11-11)** sts at beg of next 2 rows, then **10 (11-11-11-11)** sts at beg of following 2 rows. Leave rem **41 (43-45-47-49)** sts on a st holder.

LEFT FRONT

With smaller needles, cast on **39 (43-47-47-51)** sts.

1st row: (RS). *K2. P2. Rep from * to last 3 sts. K3.

2nd row: K1. *P2. K2. Rep from * to last 2 sts. P2. Rep last 2 rows of (K2. P2) ribbing for 2" [5 cm], ending on a 1st row.

Next row: (WS). *Rib across **3 (3-4-3-4)** sts. M1. Rep from * to last **6 (10-11-8-7)** sts. Rib to end of row. **50 (54-56-60-62)** sts.

Change to larger needles and proceed in pat as follows:

1st row: (RS). P2. (K1tbl. P1) **4 (6-7-9-10)** times. K1tbl. Work 1st row Panel Pat B across next 24 sts. K1tbl. Work 1st row Panel Pat A across next 11 sts. K1tbl. P2.

2nd row: K2. P1tbl. Work 2nd row Panel Pat A across next 11 sts. P1tbl. Work 2nd row Panel Pat B across next 24 sts. P1tbl. **K10 (14-16-20-22)**.

These 2 rows form pat. Panel Pats A and B are now in position.

Cont in pat, keeping cont of Panel Pats, until work from beg measures **10¼ (11½-12-12½-13½)" [26 (29-30.5-32-34.5) cm]**, ending on a WS row.

Shape armhole and front: Keeping cont of pat, cast off **5 (6-6-7-8)** sts beg of next row. **45 (48-50-53-54)** sts.

Work 1 row even in pat.

Dec 1 st at front edge on next **7 (9-9-13-13)** rows, AT SAME TIME, dec 1 st at armhole edge on next and every following alt row **3 (4-4-6-6)** times more. **34 (34-36-33-34)** sts.

Sizes 4, 6 and 8 only: Dec 1 st at front edge only on next **5 (3-3)** rows. **29 (31-33)** sts.

All sizes: Dec 1 st at front edge only on next and every following alt row until there are **20 (21-22-22-22)** sts.

Cont even in pat until armhole measures same length as Back to beg of shoulder shaping, ending on a WS row.

Shape shoulder: Keeping cont of pat, cast off **10 (10-11-11-11)** sts beg of next row. Work 1 row even in pat. Cast off rem **10 (11-11-11-11)** sts.

RIGHT FRONT

With smaller needles, cast on **39 (43-47-47-51)** sts.

1st row: (RS). K3. *P2. K2. Rep from * to end of row.

2nd row: *P2. K2. Rep from * to last 3 sts. P2. K1. Rep last 2 rows of (K2. P2) ribbing for 2" [5 cm], ending on a 1st row.

Next row: (WS). Rib across **6 (10-11-8-7)** sts. *M1. Rib across **3 (3-4-3-4)** sts. Rep from * to end of row. **50 (54-56-60-62)** sts.

Change to larger needles and proceed in pat as follows:

1st row: P2. K1tbl. Work 1st row Panel Pat A across next 11 sts. K1tbl. Work 1st row Panel Pat B across next 24 sts. (K1tbl. P1) **5 (7-8-10-11)** times. P1.

2nd row: **K10 (14-16-20-22)**. P1tbl. Work 2nd row Panel Pat B across next 24 sts. P1tbl. Work 2nd row Panel Pat A across next 11 sts. P1tbl. K2. These 2 rows form pat. Panel Pats A and B are now in position.

Cont in pat, keeping cont of Panel Pats, until work from beg measures **10¼ (11½-12-12½-13½)" [26 (29-30.5-32-34.5) cm]**, ending on a RS row.

Shape armhole and front: Keeping cont of pat, cast off **5 (6-6-7-8)** sts at beg of next row. **45 (48-50-53-54)** sts.

Dec 1 st at front edge on next **7 (9-9-13-13)** rows, AT SAME TIME, dec 1 st at armhole edge on next and every following alt row **3 (4-4-6-6)** times more. **34 (34-36-33-34)** sts.

Sizes 4, 6 and 8 only: Dec 1 st at front edge only on next **5 (3-3)** rows. **29 (31-33)** sts.

All sizes: Dec 1 st at front edge only on next and every following alt row until there are **20 (21-22-22-22)** sts.

Cont even in pat until armhole measures same length as Back to beg of shoulder shaping, ending on a RS row.

Shape shoulder: Keeping cont of pat, cast off **10 (10-11-11-11)** sts at beg of next row. Work 1 row even in pat. Cast off rem **10 (11-11-11-11)** sts.

SLEEVES

With smaller needles, cast on **38 (42-42-46-46)** sts.

Work 2" [5 cm] in (K2. P2) ribbing as given for Back, ending on a 1st row.

Next row: (WS). *Rib across **6 (6-6-7-7)** sts. M1. Rep from * to last **2 (6-6-4-4)** sts. Rib to end of row. **44 (48-48-52-52)** sts.

Change to larger needles and proceed in pat as follows:

1st row: (RS). P1. (K1tbl. P1) **4 (5-5-6-6)** times. K1tbl. Work 1st row Panel Pat B across next 24 sts. (K1tbl. P1) **4 (5-5-6-6)** times. K1tbl. P1.

2nd row: **K9 (11-11-13-13)**. P1tbl. Work 2nd row Panel Pat B across next 24 sts. P1tbl. **K9 (11-11-13-13)**.

These 2 rows form pat. Panel Pat B is now in position.

Work a further 4 rows in pat.

Keeping cont of pat, inc 1 st each end of next and every following **4th (6th-4th-6th-6th)** row until there are **62 (68-56-76-80)** sts, taking inc sts into side pat.

Sizes 4 and 8 only: Inc1 st each end of every following 6th row from previous inc until there are **66 (72)** sts, taking inc sts into side pat.

All sizes: Cont even in pat until work from beg measures **11 (12½-13½-15-16)" [28 (32-34.5-38-40.5) cm]**, ending on a WS row.

Shape top: Keeping cont of pat, cast off **5 (6-6-7-8)** sts beg of next 2 rows. **56 (56-60-62-64)** sts. Dec 1 st each end of next and every following alt row **4 (6-7-8-8)** times more. **46 (42-44-44-46)** sts.

Dec 1 st each end of every row until there are **16 (16-18-18-18)** sts.

Cast off in pat, dec 4 sts evenly across.

FINISHING

Pin all pieces to measurements. Cover with a damp cloth, leaving cloth to dry. Sew shoulder seams.

Button and Buttonhole Band: With RS facing and circular needle, pick up and knit **53 (57-65-65-73)** sts up Right Front edge to first front dec and **29 (31-34-37-41)** sts up Right Front neck edge. K**41 (43-45-47-49)** from Back st holder, dec 6 sts evenly across. Pick up and knit **29 (31-34-37-41)** sts down Left Front neck edge to first front dec and **53 (57-65-65-73)** sts down Left Front edge. **199 (213-237-245-271)** sts.

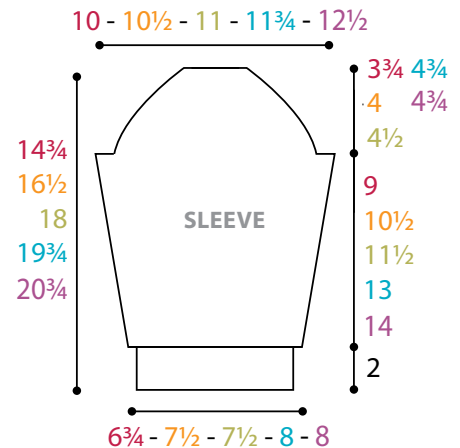
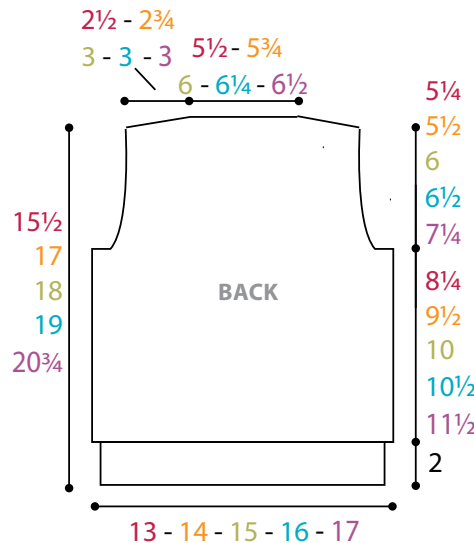
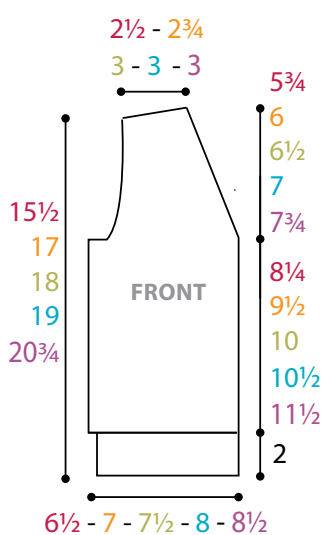
Do not join. Working back and forth across needle, knit 3 rows (garter st).

Her Version: Next row: (RS). K3. *Cast off 2 sts. K**10 (11-13-13-15)**. Rep from * 3 times more. Cast off 2 sts. Knit to end of row.

His Version: Next row: (RS). Knit to last **53 (57-65-65-73)** sts. *Cast off 2 sts. K**10 (11-13-13-15)**. Rep from * 3 times more. Cast off 2 sts. K3.

Both Versions: Next row: Knit, casting on 2 sts over cast off sts. Knit 3 rows (garter st). Cast off knitwise (WS).

Sew in sleeves. Sew side and sleeve seams. Sew buttons to correspond to buttonholes.



Patons®
Classic Wool
 DK SUPERWASH
...a part of your life.

P.O. Box 40, Listowel ON N4W 3H3

www.patonsyarns.com



BUS STOP CARDIGAN 3 of 3