



**Patons**  
**Canadiana**

**Patons**  
**DECOR**

## HAPPY FACES

### MEASUREMENT

To fit 5 x 7 inch [12.5 x 18 cm] frame

### MATERIALS

**Patons Canadiana** (100 g/3.5 oz) or  
**Patons Décor** (100 g/3.5 oz)

### GIRL

**Main Color (MC)** (Red) **1 ball**  
**Contrast A** (Brown) **1 ball**

Small amount of **Contrast B** (Black) for Hair and **Contrast C** (Aran) for name embroidery.

### BOY

**Main Color (MC)** (Blue) **1 ball**  
**Contrast A** (Pink) **1 ball**

Small amount of **Contrast B** (Orange) for Hair, **Contrast C** (Aran) for name embroidery and **Contrast D** (Red) for Mouth.

Size 4 mm (U.S. 6) knitting needles **or size needed to obtain tension**. Button eyes. 5 x 7 inch [12.5 x 18 cm] frame.

### TENSION

21 sts and 25 rows = 4 ins [10 cm] in stocking st.

## INSTRUCTIONS

**Note:** When working from chart, wind small balls of the colors to be used, one for each separate area of color in the design. Start new colors at appropriate points. To change colors, twist the two colors around each other where they meet, on WS, to avoid a hole.

With MC, cast on 25 sts.  
Work 10 rows in stocking st, ending with RS facing for next row.

**Next row:** K5. Work 1st row of Chart to end of row reading row from **right** to left. With MC, K5.

**Next row:** With MC, P5. Work 2nd row of Chart to end of row, reading row from **left** to right. With MC, P5.

Chart is now in position. Work Chart to end of Chart, ending with RS facing for next row.

With MC, work 10 rows in stocking st, ending with RS facing for next row. Cast off.

Sew button eyes in position. With MC for Girl and D for Boy embroider mouth with stem st as illustrated

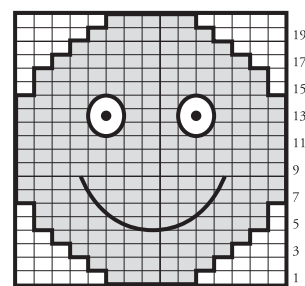
**Hair for Girl:** Cut 12 strands of B 12 ins [30.5 cm] long. Sew at top of head and 1½ ins [4 cm] down from

center at each side as illustrated. Braid rem length of yarn. Tie with MC at end of braid. Trim if necessary.

**Hair for Boy:** Knot Contrast B, at top of head as illustrated. Trim as desired. With Contrast C, embroider name with stem st

Glue outer edge of knitted square around cardboard from backing of frame. Insert into frame when glue is completely dry. Remove glass from frame.

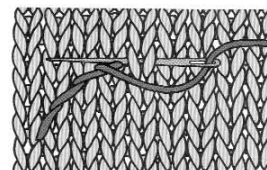
### CHART



### KEY

- = Main Color MC
- = Contrast A
- = Outline St in colors of choice

### STEM STITCH



ABBREVIATIONS: [www.patonsyarns.com/glossary](http://www.patonsyarns.com/glossary)

**Patons**

... a part of your life.

P.O. Box 40, Listowel ON N4W 3H3