



## INSTRUCTIONS

The instructions are written for smaller size. If changes are necessary for larger size the instructions will be written thus ( ). Numbers for each size are shown in the same color throughout the pattern. When only one number is given in black, it applies to both sizes.

**Note:** When working chart, carry yarn not in use loosely across WS of work but never over more than 5 sts. When it must pass over more than 5 sts, weave it over and under color in use on next st at center point of sts it passes over. The colors are never twisted around one another.

With smaller needles and MC, cast on **92 (104)** sts. Divide sts evenly on 4 needles. Join in rnd, placing a marker on first st.

**1st row:** \*K2, P2. Rep from \* around.

Rep last rnd of (K2, P2) ribbing for 3" [7.5 cm], inc 4 sts evenly around last rnd. **96 (108)** sts.

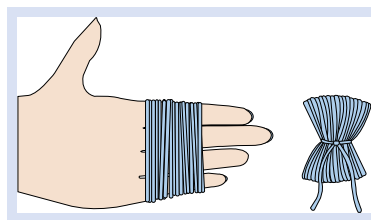
Change to larger needles and work rows 1 to 10 of Chart, *reading rnds from right to left*, noting 6-st rep will be worked **16 (18)** times.

Rep rnds 3 to 10 of Chart **3 (4)** times more.

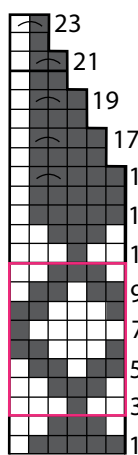
Cont working rnds 11 to 23 of Chart. **16 (18)** sts rem.

Break yarn, leaving a long end. Draw end tightly through rem sts and fasten securely.

**Pom-pom:** Wind 2 strands of A around 4 fingers approx 50 times. Tie tightly in the middle and leave a long end for attaching to Hat. Cut loops at both ends and trim to a smooth round shape. Sew to top of Hat.



## CHART



## KEY

- = Main Color (MC)
- = Contrast A
- K2tog = With A, K2tog
- K2tog = With MC, K2tog

Rep Rnds 3 to 10 of chart **4 (5)** times total.

6-st rep Start Here

## PATONS® ASTRA™ LATTICE FAIR ISLE HAT (TO KNIT)

### SIZES

To fit child **2/4 (6/8)** years.

### MATERIALS

Patons® Astra™ (50 g/1.75 oz; 147 m/161 yds)

Sizes	2/4	6/8	
<b>Girl's Version</b>			
<b>Main Color (MC)</b> Deep Pink (02210)	<b>1</b>	<b>1</b>	<b>ball</b>
<b>Contrast A</b> Hot Pink (08416)	<b>1</b>	<b>1</b>	<b>ball</b>
<b>Boy's Version</b>			
<b>Main Color (MC)</b> Hot Orange (08628)	<b>1</b>	<b>1</b>	<b>ball</b>
<b>Contrast A</b> Medium Grey (02728)	<b>1</b>	<b>1</b>	<b>ball</b>

Set of five sizes 3.75 mm (U.S. 5) and 4 mm (U.S. 6) double-pointed knitting needles or **size needed to obtain tension**. Stitch marker.

### TENSION

22 sts and 28 rows = 4" [10 cm] with larger needles in stocking st.

### STITCH GLOSSARY: [www.patonsyarns.com/abbreviations](http://www.patonsyarns.com/abbreviations)

<b>Cont</b> = Continue(ity)	<b>K2tog</b> = Knit next 2 stitches together	<b>Rnd(s)</b> = Round(s)
<b>Inc</b> = Increase 1 stitch by knitting into front and back of next stitch	<b>P</b> = Purl	<b>St(s)</b> = Stitch(es)
<b>K</b> = Knit	<b>Rem</b> = Remaining	<b>WS</b> = Wrong side
	<b>Rep</b> = Repeat	

**Patons®**  
**Astra™**

...a part of your life.

P.O. Box 40, Listowel ON N4W 3H3

[www.patonsyarns.com](http://www.patonsyarns.com)



LATTICE FAIR ISLE HAT

1 of 1