



Patons
Canadiana

Patons
DECOR

PLAYGROUND SET

MEASUREMENTS

BLANKET: Approx 32 x 38 ins [81.5 x 96.5 cm].

PILLOW: 14 ins [35.5 cm] diameter.

MATERIALS

Patons Canadiana (100 g/3.5 oz) or
Patons Décor (100 g/3.5 oz)

	Blanket	Pillow	
Main Color (MC) (Lt Aqua)	3	1	ball(s)
Contrast A (Dk Aqua)	1	1	ball
Contrast B (Brown)	1	1	ball
Contrast C (Blue)	3	1	ball(s)
Contrast D (Yellow)	3	1	ball(s)
Contrast E (Orange)	1	1	ball
Contrast F (Green)	3	1	ball(s)

Size 4.5 mm (U.S. 7) knitting needles
or size needed to obtain tension.
14 ins [35.5 cm] round pillow form.

TENSION

20 sts and 26 rows = 4 ins [10 cm] in
stocking st.

ABBREVIATIONS

MB = (Make Bobble). [(K1. P1) 3
times. K1] all in next st. **Turn.** P7.
Turn. Slip 6th, 5th, 4th, 3rd, 2nd and
1st st over 7th st. Bobble made.

INSTRUCTIONS

BLANKET

Note: When working from Charts I,
II and V, wind small balls of the colors
to be used, one for each separate area
of color in the design. Start new colors
at appropriate points. To change
colors, twist the two colors around
each other where they meet, on WS,
to avoid a hole.

STRIP 1

With MC, cast on 36 sts.
**Work 8 rows in stocking st.

Note: Work Chart I as follows:
Background = MC, Front of House =
C, Roof = A, Windows = F, Door = E.

Next row: (RS). With MC, K2. Work
1st row of Chart I in stocking st
reading row from **right** to left. With
MC, K2.

Next row: With MC, P2. Work 2nd
row of Chart I in stocking st reading
row from **left** to right. With MC, P2.
Chart I is now in position.
Work Chart I to end of chart.
With MC, beg with a purl row, work
11 rows in stocking st.**

Next row: (RS). With D, knit.

Next row: With D, purl.
With D, work 1st to 18th rows of
Panel Pat D twice, then 1st to 8th
rows once, ending with RS facing for
next row.

***With C, work 6 rows in stocking
st.

Next row: (RS). With C, K10. Work
1st row of Chart II reading row from
right to left. With C, K10.

Next row: With C, P10. Work 2nd
row of Chart II, reading row from **left**
to right. With C, P10. Chart II is now
in position.

Work Chart II to end of chart.
With C, beg with a purl row, work
7 rows in stocking st.***

Next row: (RS). With F, knit.

Next row: With F, purl.
With F, work 1st to 20th rows of
Panel Pat C twice, noting 10 st rep
will be worked 3 times, then 1st to
4th rows once, ending with RS facing
for next row.



ABBREVIATIONS: www.patonsyarns.com/glossary

Change to MC and work from ** to ** as given above.

Note: Work Chart I as follows:
Background = MC, Front of House = E, Roof = A, Windows = C, Door = D.
Cast off.

STRIP 2

With D, cast on 36 sts and work 1st to 4th rows of Panel Pat A 11 times, then 1st and 2nd rows once, ending with RS facing for next row.

With C, work in stocking st for 46 rows (for Chart IV embroidery).

Next row: (RS). With F, knit.

Next row: With F, purl.

With F, work 1st to 8th rows of Panel Pat B 5 times, noting 10 st rep will be worked 3 times, then 1st to 4th rows once, thus ending with RS facing for next row.

With MC, work in stocking st for 46 rows (for Chart III embroidery).

Next row: (RS). With D, knit.

Next row: With D, purl.

With D, work 1st to 4th rows of Panel Pat A 11 times, ending with RS facing for next row. Cast off.

Strip 3

With C, cast on 36 sts.

Work from *** to *** as given for Strip 1.

Next row: (RS). With F, knit.

Next row: With F, purl.

With F, work 1st to 20th rows of Panel Pat C twice, noting 10 st rep will be worked 3 times, then 1st and 2nd rows once, ending with RS facing for next row.

Work from ** to ** as given for Strip 1.

Note: Work Chart I as follows:

Background = MC, Front of House = D, Roof = A, Windows = C, Door = F.

Next row: (RS). With D, knit.

Next row: With D, purl.

With D, work 1st to 18th rows of Panel Pat D twice, then 1st to 6th rows once, thus ending with RS facing for next row.

Work from *** to *** as given for Strip 1. Cast off.

Strip 4

With F, cast on 36 sts.

With F, work 1st to 8th rows of Panel Pat B 5 times, noting 10 st rep will be worked 3 times, then 1st to 6th rows once, thus ending with RS facing for next row.

With MC, work in stocking st for 46 rows (for Chart III embroidery).

Next row: (RS). With D, knit.

Next row: With D, purl.

With D, work 1st to 4th rows of Panel Pat A 11 times, thus ending with RS facing for next row.

With C, work in stocking st for 46 rows (for Chart IV embroidery).

Next row: (RS). With F, knit.

Next row: With F, purl.

With F, work 1st to 8th rows of Panel Pat B 5 times, noting 10 st rep will be worked 3 times, then 1st to 4th rows once, thus ending with RS facing for next row. Cast off.

FINISHING

With D, embroider sun as shown on Chart III using stem st as illustrated.

With D or E embroider slide ladder and swing frame using stem st.

With D or E, embroider slide or swing seats with duplicate st.

With E, embroider apples randomly on tree of Chart II using french knots.

With F or C, embroider doorknobs on houses of Chart I using french knots.

With B, embroider cross on windows with straight st as illustrated.

Sew strips tog in the following sequence: Strip 1, Strip 2, Strip 3 and Strip 4.

Side Edging: With RS of work facing and MC, pick up and knit 144 sts up right side edge of blanket. Work 10 rows in garter st (knit every row) ending with WS facing for next row. Cast off knitwise.

With C, rep for left side edge.

Top and Bottom Edging: With RS of work facing and D pick up and knit 122 sts along top of blanket. Work 10 rows in garter st ending with WS facing for next row. Cast off knitwise.

With F, rep for bottom edge.

PILLOW

Front

With C, cast on 26 sts.

Work Chart V to end of chart reading **knit** rows from **right** to left and **purl** rows from **left** to right.

Back

Work as for Front omitting House motif.

Finishing

With B, embroider cross on windows. Sew front and back of Pillow tog leaving an opening to insert pillow form. Insert pillow form. Sew opening closed.

FRENCH KNOT

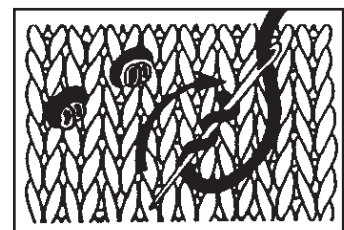
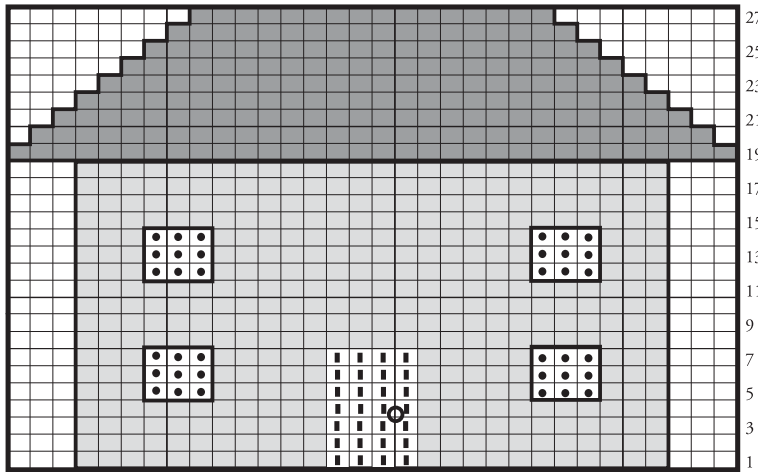


CHART I



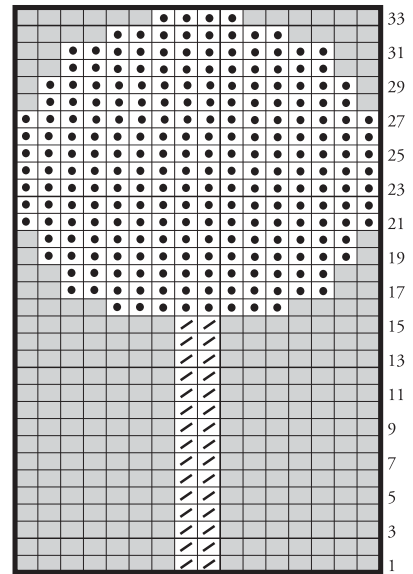
Key - House

- = Background
- = Front of House
- = Roof
- = Door
- = Window
- = French knot

Key - Tree

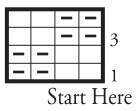
- = Contrast C
- = Contrast B
- = Contrast F

CHART II

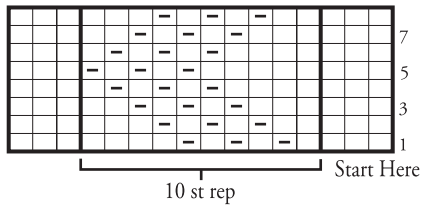


Start Here

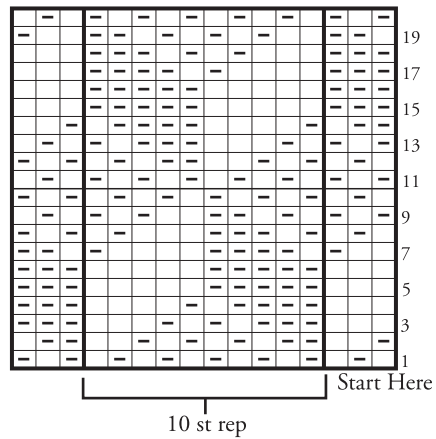
PANEL PATTERN A



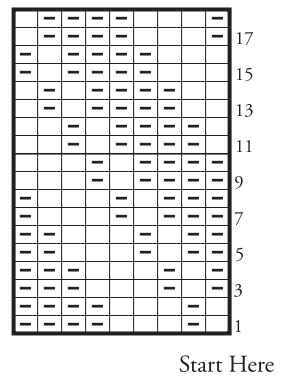
PANEL PATTERN B



PANEL PATTERN C



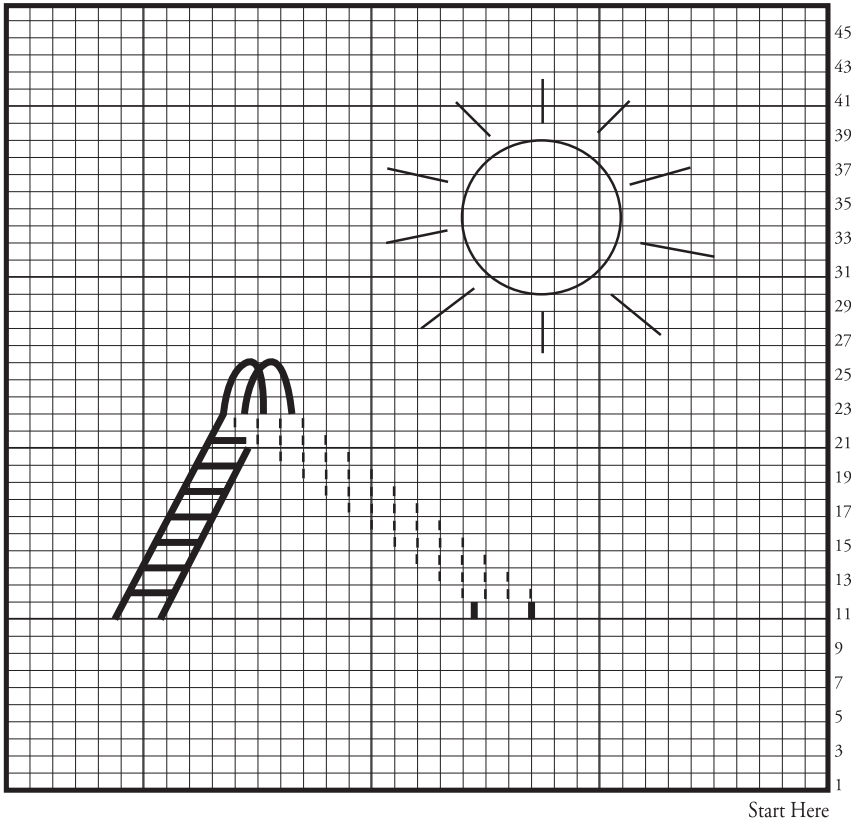
PANEL PATTERN D



Key for Panel Pats

- = With MC, knit on RS, purl on WS.
- = With MC, purl on RS, knit on WS.

CHART III



Key - Swings and Slide





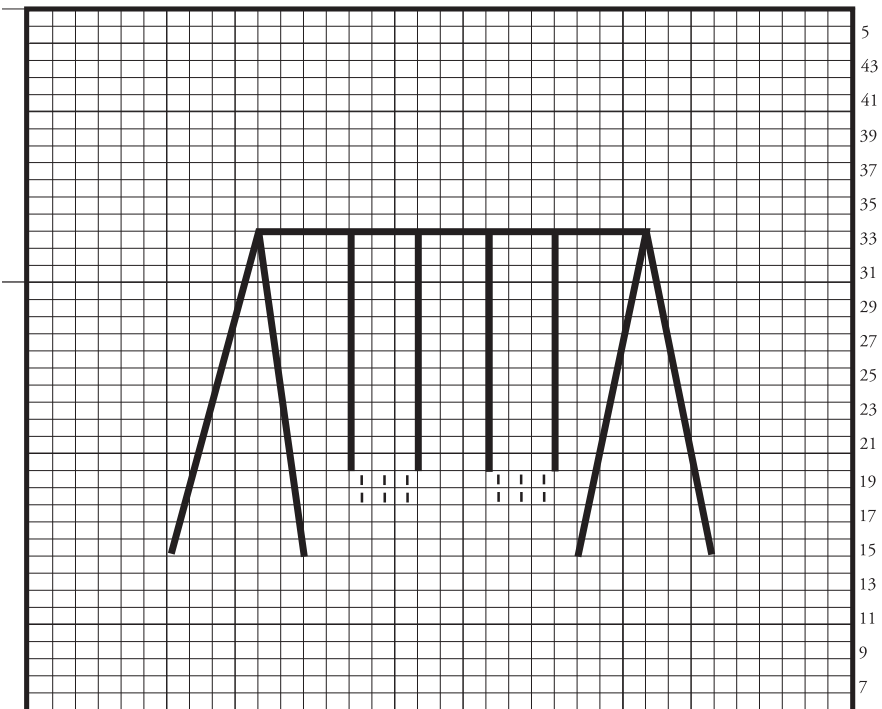
-  = Background
-  = Swing Seats/Slide. Duplicate st.
-  = Swing Frame/Ladder. Stem st.
-  = Sun. Stem st.

CHART IV



Key - Pillow









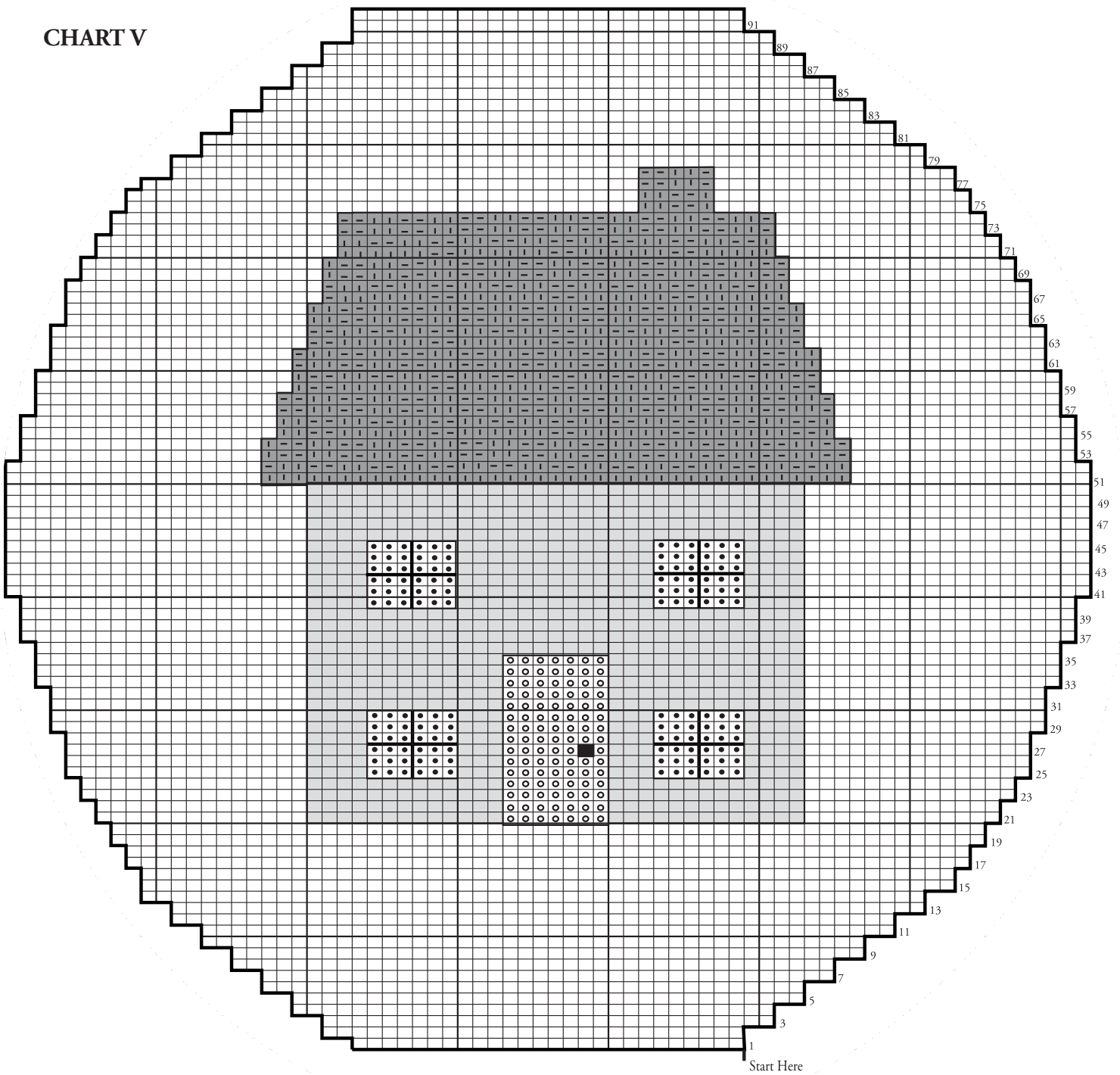
-  = Contrast C
-  = With MC, knit on RS, purl on WS.
-  = With MC, purl on RS, knit on WS.
-  = Contrast E
-  = Contrast D
-  = Contrast A
-  = Make Bobble using Contrast F
-  = Outline St with Contrast B

CHART V



Note: To work 2 st incs: Cast on 2 sts at beg of row as shown.
 To work 1 st inc: Inc 1 st in first st. Work to last 2 sts. Inc 1 st in next st. K1.
 To work 2 st decs: Cast off 2 sts at beg of row as shown.
 To work 1 st dec: Sl1. K1. pss0. Work to last 2 sts. K2tog.

Patons

... a part of your life.

P.O. Box 40, Listowel ON N4W 3H3