



Patons
DECOR

Patons
Canadiana

NURSERY SET

SIZE

Crib Catch-All: Approx 20 ins [51 cm] wide x 15 ins [38 cm] high.

Blanket: Approx 36 ins [91.5 cm] wide x 42½ ins [108 cm] long.

MATERIALS

Patons Canadiana (100 g/3.5 oz) or
Patons Décor (100 g/3.5 oz)

Crib Catch-All

Main Color (MC) (Dk Blue)

2	balls	
Contrast A (Blue)	1	ball
Contrast B (Yellow)	1	ball
Contrast C (White)	1	ball
Contrast D (Brown)	1	ball

Blanket

Main Color (MC) (Dk Blue)

4	balls	
Contrast A (Blue)	2	balls
Contrast B (Yellow)	2	balls
Contrast C (White)	1	ball
Contrast D (Brown)	1	ball

Size 4.5 mm (U.S. 7) circular knitting needle 36 ins [90 cm] long for Blanket.

Size 4.5 mm (U.S. 7) knitting needles for Blanket and Crib Catch-all **or size needed to obtain tension.**

TENSION

20 sts and 26 rows = 4 ins [10 cm] in stocking st.

ABBREVIATIONS

Sl1 wyib = slip next st purlwise with yarn at back of work.

INSTRUCTIONS

WOVEN PAT

1st and 3rd rows: (WS). Purl.

2nd row: P1. *Sl1 wyib. P1. Rep from * to end of row.

4th row: P2. *Sl1 wyib. P1. Rep from * to last st. P1.

These 4 rows form woven pat.

CRIB CATCH-ALL

With MC, cast on 101 sts. Proceed in woven pat until work from beg measures 15 ins [38 cm], ending with RS facing for next row. Cast off in pat.

POCKET A

With A, cast on 41 sts. Work 4 rows stocking st.

Next row: (RS). K5. Work 1st row of Chart I in stocking st, reading row from **right** to left. K4.

Next row: P4. Work 2nd row of Chart I in stocking st, reading row from **left** to right. P5.

Chart I is now in position.

Cont working Chart I in stocking st until chart is complete, ending with WS facing for next row.

With A, work 3 rows in stocking st.

Proceed in seed st pat as follows:

1st row: (RS). K1. *P1. K1. Rep from * to end of row.

This row forms seed st pat.

Work a further 5 rows in seed st pat. Cast off in pat.

POCKET B

With B, cast on 41 sts. Work 6 rows stocking st.

Next row: (RS). K10. Work 1st row of Chart II in stocking st, reading row from **right** to left. K11.



ABBREVIATIONS: www.patonsyarns.com/glossary

Next row: P11. Work 2nd row of Chart II in stocking st, reading row from **left** to right. P10.

Chart II is now in position.

Cont working Chart II in stocking st until chart is complete, ending with WS facing for next row.

With B, work 5 rows in stocking st.

Work 6 rows in seed st pat as given for Pocket A. Cast off in pat.

POCKET C

With B, cast on 41 sts. Work 4 rows stocking st.

Next row: (RS). K9. Work 1st row of Chart III in stocking st, reading row from **right** to left. K9.

Next row: P9. Work 2nd row of Chart III in stocking st, reading row from **left** to right. P9.

Chart III is now in position.

Cont working Chart III in stocking st until chart is complete, ending with WS facing for next row.

With B, work 5 rows in stocking st.

Work 6 rows in seed st pat as given for Pocket A. Cast off in pat.

POCKET D

With A, cast on 41 sts. Work 6 rows stocking st.

Next row: (RS). K4. Work 1st row of Chart IV in stocking st, reading row from **right** to left. K4.

Next row: P4. Work 2nd row of Chart IV in stocking st, reading row from **left** to right. P4.

Chart IV is now in position.

Cont working Chart IV in stocking st until chart is complete, ending with WS facing for next row.

With A, work 7 rows in stocking st.

Work 6 rows in seed st pat as given for Pocket A. Cast off in pat.

Sew pockets in position as illustrated. Sew short lengths of twisted cord to side edges and long lengths to top and bottom edges, creating tassels at corners as shown.

Twisted cord: Cut 5 strands of yarn 48 ins [122 cm] long for short cords and 62 ins [157.5 cm] long for long cords. For each cord, with all strands tog hold one end and with someone holding the other end, twist strands to the right until they begin to curl. Fold the 2 ends tog and tie in a knot so they will not unravel. The strands will now twist themselves tog. Adjust length if desired.

Ties: Cut 24 lengths of MC 36 ins [91.5 cm] long. With 3 strands, make twisted cords as before. Adjust length if desired. (8 ties). Sew 4 ties across top and 4 ties along bottom (these ties will tie onto crib railing).

BLANKET

STRIP A (make 2)

With B and pair of needles, cast on 41 sts.

**With B, work 4 rows stocking st.

Next row: (RS). K10. Work 1st row of Chart II in stocking st, reading row from **right** to left. K11.

Next row: P11. Work 2nd row of Chart II in stocking st, reading row from **left** to right. P10.

Chart II is now in position.

Cont working Chart II in stocking st until chart is complete, ending with WS facing for next row.

With B, work 2 rows in stocking st.

With MC, proceed in woven pat until work from beg of woven pat measures 5½ ins [14 cm], ending with RS facing for next row.

With B, work 8 rows stocking st.

Next row: (RS). K9. Work 1st row of Chart III in stocking st, reading row from **right** to left. K9.

Next row: P9. Work 2nd row of Chart III in stocking st, reading row from **left** to right. P9.

Chart III is now in position.

Cont working Chart III in stocking st until chart is complete, ending with WS facing for next row.

With B, work 4 rows in stocking st.**

With MC, proceed in woven pat until work from beg of woven pat measures 5½ ins [14 cm], ending with RS facing for next row.

Rep from ** to ** once more. Cast off purlwise (WS).

STRIP B (make 2)

With MC, cast on 41 sts.

***With MC, proceed in woven pat until work from beg of woven pat measures 5½ ins [14 cm], ending with RS facing for next row.

With A, work 8 rows stocking st.

Next row: (RS). K4. Work 1st row of Chart IV in stocking st, reading row from **right** to left. K4.

Next row: P4. Work 2nd row of Chart IV in stocking st, reading row from **left** to right. P4.

Chart IV is now in position.

Cont working Chart IV in stocking st until chart is complete, ending with WS facing for next row.

With A, work 8 rows in stocking st.

With MC, proceed in woven pat until work from beg of woven pat measures 5½ ins [14 cm], ending with RS facing for next row.***

With A, work 6 rows stocking st.

Next row: (RS). K5. Work 1st row of Chart I in stocking st, reading row from **right** to left. K4.

Next row: P4. Work 2nd row of Chart I in stocking st, reading row from **left** to right. P5.

Chart I is now in position.

Cont working Chart I in stocking st until chart is complete, ending with WS facing for next row.

With A, work 4 rows in stocking st.

Rep from *** to *** once more. Cast off.

Sew strips tog, alternating Strip A and B as illustrated.

Top and Bottom Edging: With MC and circular needle, pick up and knit 153 sts across top edge.

1st row: (WS). P1. *K1. P1. Rep from * to end of row.

2nd row: (RS). K1. Inc 1 st in next st purlwise. *K1. P1. Rep from * to last 3 sts. K1. Inc 1 st in next st purlwise. K1.

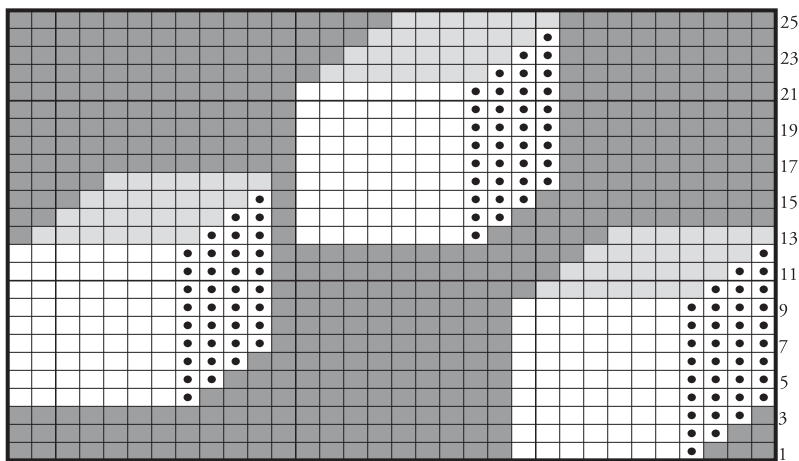
3rd row: P1. K2. *P1. K1. Rep from * to last 3 sts. K2. P1.

4th row: K1. Inc 1 st in next st purlwise. *P1. K1. Rep from * to last 3 sts. P1. Inc 1 st in next st purlwise. K1.

Rep last 4 rows until edging measures 2 ins [5 cm], ending with RS facing for next row. Cast off in ribbing. Rep for Bottom Edging.

Side Edging: With MC and circular needle, pick up and knit 185 sts along side edge. Work as given for Top and Bottom Edging. Rep along opposite side edge. Sew edgings tog at corners.






CHART I

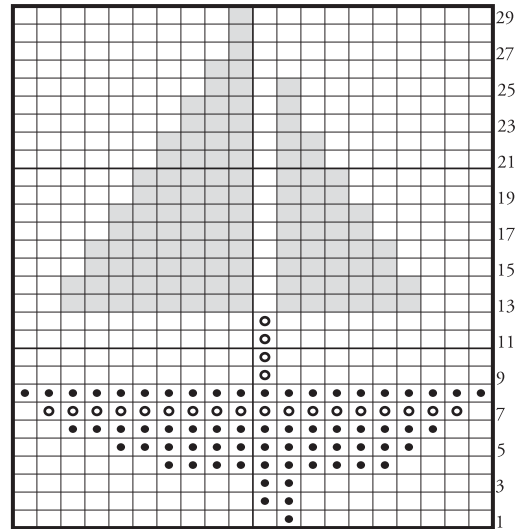


Start Here

CHART II

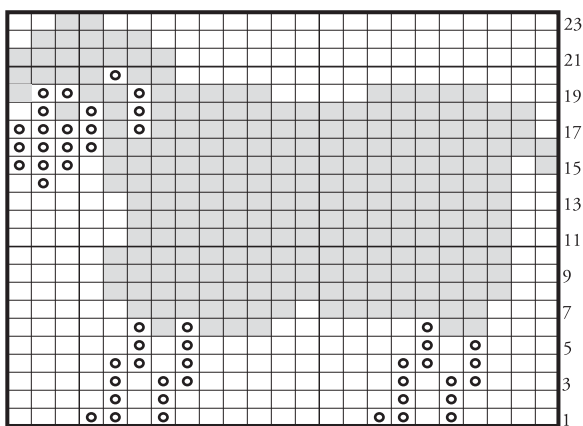
Key

-  = MC
-  = Contrast A
-  = Contrast B
-  = Contrast C
-  = Contrast D



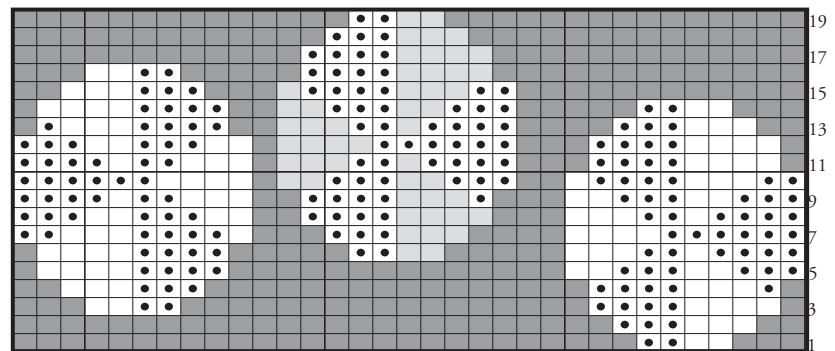
Start Here

CHART III



Start Here

CHART IV



Start Here

 Patons®

... a part of your life.

P.O. Box 40, Listowel ON N4W 3H3