



Julia Madill
Designer



KNIT | SKILL LEVEL: INTERMEDIATE

ABBREVIATIONS

Beg = Beginning
Cont = Continue(ity)
Decs = Decreases
K = Knit
K2tog = Knit next 2 stitches together
P = Purl
P2tog = Purl next 2 stitches together
P2togtbl = Purl next 2 stitches together through back loops

Rem = Remaining
Rep = Repeat
Rnd = Round
RS = Right side
Sl1P = Slip next st purlwise
Ssk = Slip next 2 stitches knitwise one at a time. Pass them back onto left-hand needle, then knit through back loops together
St(s) = Stitch(es)
WS = Wrong side

MATERIALS

Patons® Grace™ (1.75 oz/50 g; 136 yds/125 m)

Sizes	XS/S	M	L	XL	2/3XL	4/5XL	
Contrast A							
Cardinal (62705)	3	3	3	3	4	4	balls
Contrast B							
Blush (62416)	2	2	2	2	2	3	balls
Contrast C							
Natural (62008)	2	2	2	2	2	3	balls
Contrast D							
Night (62040)	3	3	4	4	5	5	balls

Sizes U.S. 4 (3.5 mm) and U.S. 6 (4 mm) knitting needles **or size needed to obtain gauge.** Size U.S. 4 (3.5 mm) circular knitting needle 16" [40.5 cm] long. Stitch holder. Stitch markers. Yarn needle.

SIZES

To fit bust measurement

XS/S 28-34" [71-86.5 cm]
M 36-38" [91.5-96.5 cm]
L 40-42" [101.5-106.5 cm]
XL 44-46" [112-117 cm]
2/3XL 48-54" [122-137 cm]
4/5XL 56-62" [142-157.5 cm]

Finished bust

XS/S 34" [86.5 cm]
M 38" [96.5 cm]
L 42" [106.5 cm]
XL 46" [117 cm]
2/3XL 54" [137 cm]
4/5XL 62" [157.5 cm]

GAUGE

24 sts and 32 rows = 4" [10 cm] with larger needles in stocking stitch.

INSTRUCTIONS

The instructions are written for smallest size. If changes are necessary for larger sizes the instructions will be written thus (.). Numbers for each size are shown in the same color throughout the pattern. When only one number is given in black, it applies to all sizes.

Intarsia Note: When working from charts, use separate ball of yarn for each separate area of color in the design. To change colors, wind the 2 colors around each where they meet, on WS, to avoid a hole

BACK

With smaller needles and A, cast on **127 (139-151-163-187-211) sts.

1st row: (RS). Sl1P. *P1. K1. Rep from * to end of row.

2nd row: Sl1P. *K1. P1. Rep from * to end of row.

Rep last 2 rows twice more.

Change to larger needles.

Note: Chart for sizes **XS/S, M, L** and **XL** is shown on pages 5 and 6. Chart for sizes **2/3XL** and **4/5XL** is shown on pages 7 and 8.

Beg following color changes in Chart, proceed as follows to create side slit edging:

1st row: (RS). Sl1P. P1. K1. P1. Knit to last 4 sts. (P1. K1) twice.

2nd row: Sl1P. K1. P1. K1. Purl to last 4 sts (K1. P1) twice.

Cont to follow color changes in Chart, rep last 2 rows, until row 26 of Chart is complete. Place markers at each end of last row.

Cont working Chart in stocking st, reading **knit** rows from **right** to left and **purl** rows from **left** to right, noting side decs until row 160 is complete. **103 (115-127-139-163-187)** sts. Break A, B and C.

With D, cont even in stocking st until work from beg measures 23" [58.5 cm], ending on a WS row.**

Shape armholes: Cast off **10 (7-8-9-12-12)** sts at beg of next **2 (4-4-4-4-6)** rows. **83 (87-95-103-115-115)** sts.

Next row: (RS). K2. ssk. Knit to last 4 sts. K2tog. K2.

Next row: (WS). P2. P2tog. Purl to last 4 sts. P2togtbl. P2.

Rep last 2 rows **4 (4-5-7-8-8)** times more. **63 (67-71-71-79-79)** sts.

Sizes M, 2/3XL and 4/5XL only:

Next row: (RS). K2. ssk. Knit to last 4 sts. K2tog. K2. **65 (77-77)** sts.

All sizes: Cont even in stocking st until armhole measures **6 (6½-7-7½-8-8½)" [15 (16.5-18-19-20.5-21.5) cm]**, ending on a WS row.

Shape Left Neck: (RS). K**16 (16-18-18-20-20)** and leave these sts on st holder for Right Neck. Cast off **31 (33-35-35-37-37)** sts. Knit to end of row.

Next row: (WS). Purl to last 4 sts. P2togtbl. P2.

Next row: (RS). K2. ssk. Knit to end of row.

Rep last 2 rows twice more. **10 (10-12-12-14-14)** sts.

Next row: (WS). Cast off **5 (5-6-6-7-7)**. Purl to end of row.

Next row: Knit.

Cast off rem **5 (5-6-6-7-7)** sts.

Shape Right Neck: With WS facing and larger needles, join D to **16 (16-18-18-20-20)** sts from st holder.

Next row: (WS). P2. P2tog. Purl to end of row.

Next row: (RS). Knit to last 4 sts. K2tog. K2.

Rep last 2 rows twice more. **10 (10-12-12-14-14)** sts.

Next row: Purl.

Next row: (RS). Cast off **5 (5-6-6-7-7)** Knit to end of row.

Next row: Purl.

Cast off rem **5 (5-6-6-7-7)** sts.

FRONT

Work from ** to ** as given for Back.

Shape armholes: Cast off **10 (7-8-9-12-12)** sts at beg of next **2 (4-4-4-4-6)** rows. **83 (87-95-103-115-115)** sts.

Next row: (RS). K2. ssk. Knit to last 4 sts. K2tog. K2.

Next row: (WS). P2. P2tog. Purl to last 4 sts. P2togtbl. P2.

Rep last 2 rows **2 (2-3-5-6-6)** times more. **71 (75-79-79-87-87)** sts.

Shape Right Neck: (RS). K2. ssk. **K16 (17-18-18-21-21)**. Slip last **19 (20-21-21-24-24)** sts onto st holder for Left Neck. Cast off **31 (33-35-35-37-37)** sts. **K16 (17-18-18-21-21)**. K2tog. K2.

Next row: (WS). P2. P2tog. Purl to last 4 sts. P2togtbl. P2.

Next row: (RS). K2. ssk. Knit to last 4 sts. K2tog. K2.

Next row: (WS). P2. P2tog. Purl to last 4 sts. P2togtbl. P2. **13 (14-15-15-18-18)** sts.

Sizes M, 2/3XL and 4/5XL only:
Next row: (RS) K2. ssk. Knit to last 4 sts. K2tog. K2.

Next row: Purl to last 4 sts. P2togtbl.

Next row: K2. ssk. Knit to end of row.

Sizes XS/S, L and XL only: **Next row:** (RS). K2. ssk. Knit to end of row.

Next row: Purl to last 4 sts. P2togtbl.

Next row: K2. ssk. Knit to end of row.

All sizes: 10 (10-12-12-14-14) sts. Cont even in stocking st until armhole measures same length as Back before shoulder cast off, ending with a RS row.

Next row: (WS). Cast off **5 (5-6-6-7-7)** sts. Purl to end of row.

Next row: Knit. Cast off rem **5 (5-6-6-7-7)** sts.

Shape Left Neck: With WS facing and larger needles, join D to rem **19 (20-21-21-24-24)** sts from st holder.

Next row: (WS). P2. P2tog. Purl to last 4 sts. P2togtbl. P2.

Next row: (RS). K2. ssk. Knit to last 4 sts. K2tog. K2.

Next row: (WS). P2. P2tog. Purl to last 4 sts. P2togtbl. P2. **13 (14-15-15-18-18)** sts.

Sizes M, 2/3XL and 4/5XL only:
Next row: (RS) K2. ssk. Knit to last 4 sts. K2tog. K2.

Next row: P2. P2tog. Purl to end of row.

Next row: Knit to last 4 sts. K2tog.

Sizes XS/S, L and XL only: **Next row:** (RS). Knit to last 4 sts. K2tog.
Next row: P2. P2tog. Purl to end of row.

Next row: Knit to last 4 sts. K2tog.

All sizes: 10 (10-12-12-14-14) sts. Cont even in stocking st until armhole measures same length as Back before shoulder cast off, ending on a WS row.

Next row: (RS). Cast off **5 (5-6-6-7-7)** sts. Knit to end of row.

Next row: Purl. Cast off rem **5 (5-6-6-7-7)** sts.

FINISHING

Sew side seams above side slit markers. Sew shoulder seams.

Neckband: With RS facing, smaller circular needle and D and beg at right shoulder seam, pick up and knit **174 (178-186-186-198-202)** sts evenly around neck opening. Join in rnd, placing marker on first st.

1st rnd: *K1. P1. Rep from * around. Rep last rnd (K1. P1) ribbing 5 times more. Cast off in ribbing.

Armbands: With RS facing, smaller circular needle and D and beg at side seam, pick up and knit **128 (140-152-164-184-212)** sts evenly around armhole. Join in rnd, placing marker on first st. Work 6 rnds (K1. P1) ribbing as given for Neckband. Cast off in ribbing.

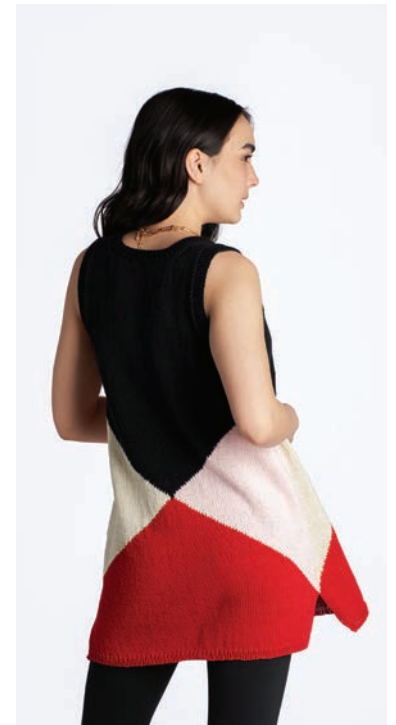
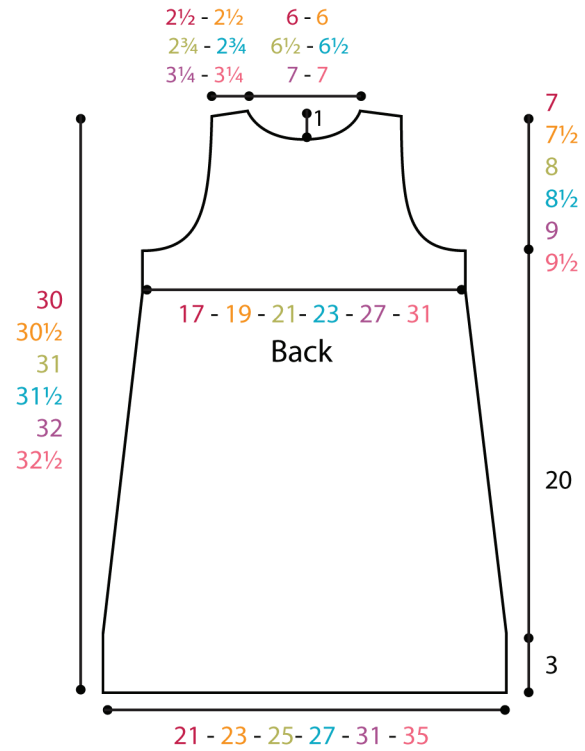
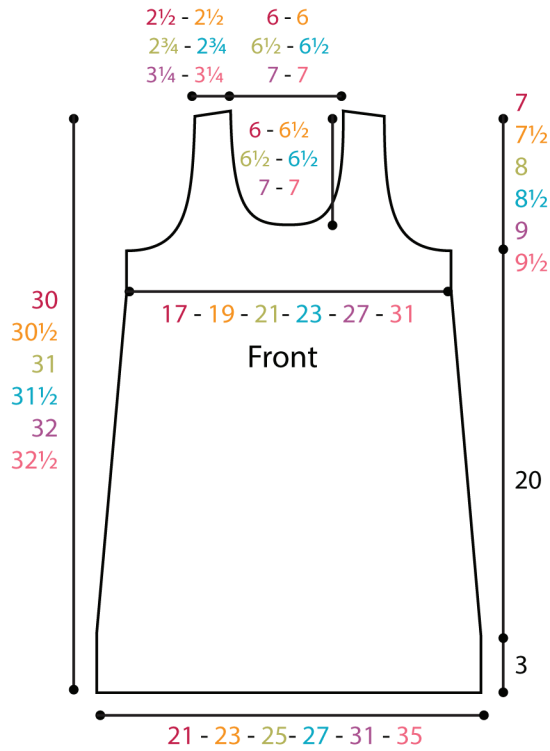




Chart Continued Sizes XS/S, M, L, XL

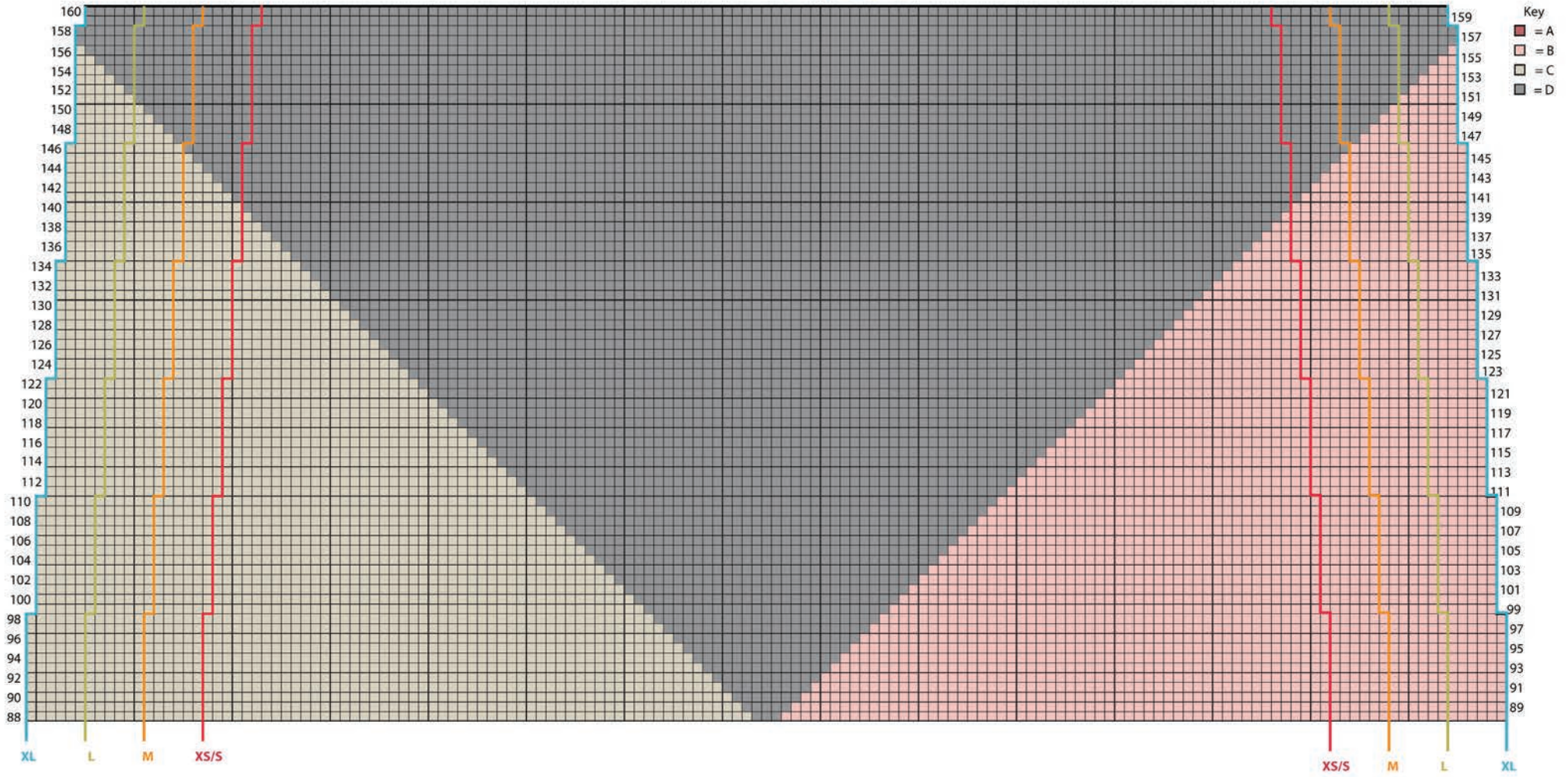


Chart Sizes 2/3XL, 4/5XL

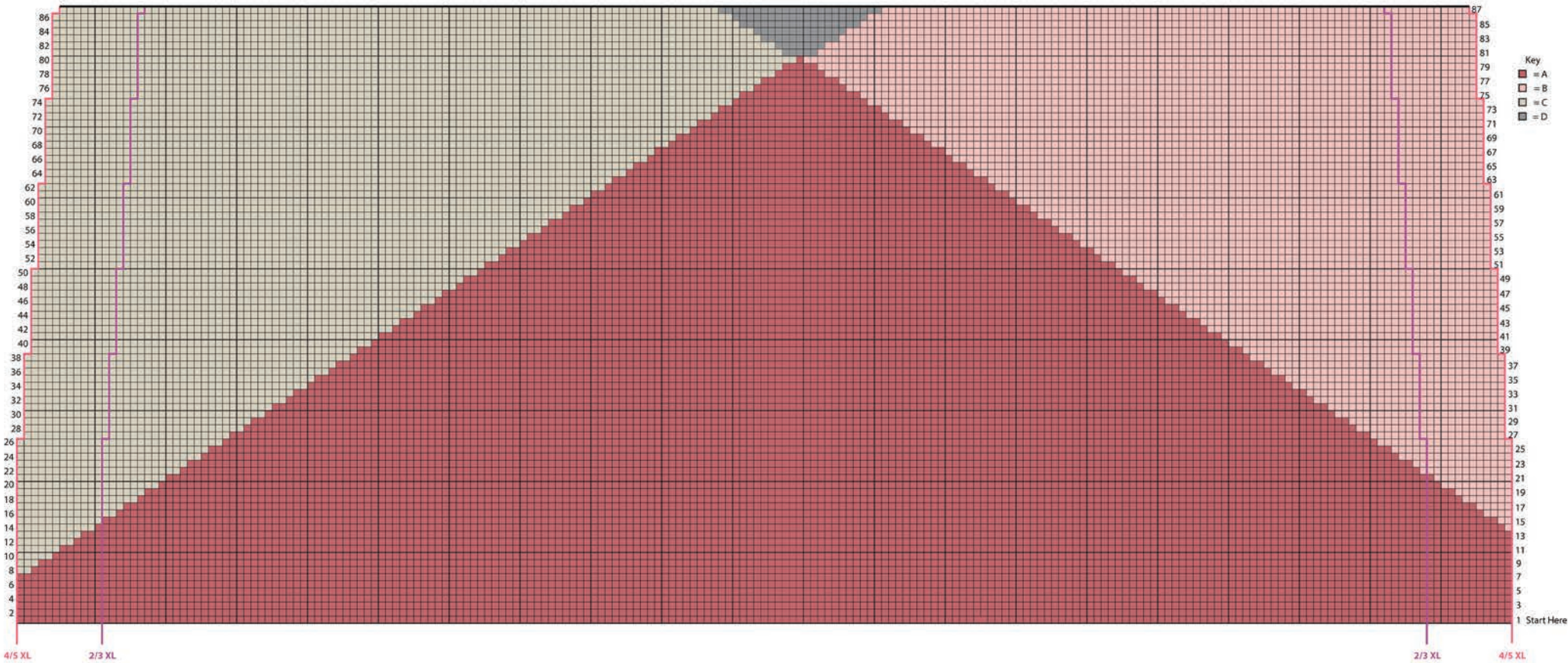


Chart Continued Sizes 2/3XL, 4/5XL

