



MEASUREMENTS

Approx 10 x 110" [25.5 x 279.5 cm], excluding fringe.

GAUGE

15 sts and 20 rows = 4" [10 cm] in stocking st.

INSTRUCTIONS

Cast on 36 sts.

Knit 3 rows (garter st), noting first row is RS.

Next row: (WS). K3. (Kfb. K2) 10 times. K3. 46 sts.

Beg Cable pat as follows:
(See chart on pg 2)

1st row: (RS). (K6. P2) twice. K1tbl. (C2B. C2F) 3 times. K1tbl. (P2. K6) twice.

2nd and alt rows: (P6. K2) twice. P1tbl. P12. P1tbl. (K2. P6) twice.

3rd row: (K6. P2) twice. K1tbl. (C2F. C2B) 3 times. K1tbl. (P2. K6) twice.

5th row: As 1st row.

7th rows: C6B. P2. K6. P2. K1tbl. (C2F. C2B) 3 times. K1tbl. P2. K6. P2. C6F.

9th to 30th rows: As 1st through 8th rows twice more, then rep 1st to 6th rows once.

31st row: C14B. P2. K1tbl. (C2F. C2B) 3 times. K1tbl. P2. C14F.

32nd row: (P6. K2) twice. P1tbl. P12. P1tbl. (K2. P6) twice.

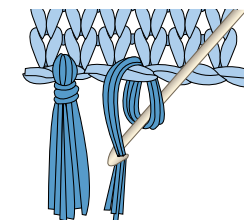
These 32 rows form Cable Pat. Cont in Cable Pat until work from beg measures approx 110" [279.5 cm], ending on a 29th row.

Next row: (WS). K3. (K2tog. K2) 10 times. K3. 36 sts.

Knit 3 rows (garter st).
Cast off.

Fringe

Cut strands of yarn 16" [40.5 cm] long. Taking 2 strands tog, fold in half and knot into fringe across ends of Scarf. Trim fringe evenly.



MATERIALS

Patons® Classic Wool Roving™ (3.5 oz/100 g; 120 yds/109 m)

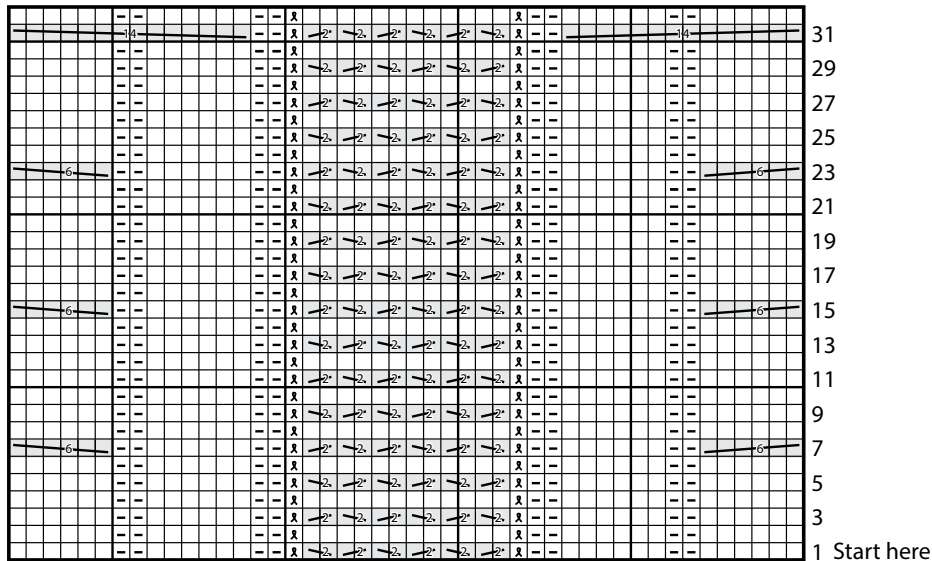
Pale Blush (77420)

or Yellow (77615)

or Aran (77008)

7 balls

Size U.S.10 (6 mm) knitting needles **or size needed to obtain gauge.**
Cable needle.



Key

- = Knit on RS rows, purl on WS rows
- = Purl on RS rows, knit on WS rows
- = K1tbl on RS rows, P1tbl on WS rows

= C2B

= C2F

= C6B

= C6F

= C14B

= C14F

ABBREVIATIONS: www.yarnspirations.com/abbreviations

Approx = Approximately

Alt = Alternate(ing)

Beg = Begin(ning)

C2B = Slip next stitch onto cable needle and leave at back of work.

K1, then K1 from cable needle

C2F = Slip next stitch onto cable needle and leave at front of front.

K1, then K1 from cable needle

C6B = Slip next 3 stitches onto cable needle and leave at back of work.

K3, then K3 from cable needle

C6F = Slip next 3 stitches onto cable needle and leave at front of work.

K3, then K3 from cable needle

C14B = Slip next 7 stitches onto cable needle and leave at back of work.

K6. P1. then P1. K6. from cable needle

C14F = Slip next 7 stitches onto cable needle and leave at front of work. K6. P1 then (P1. K6) from cable needle

Cont = Continue(ity)

K = Knit

K1tbl = Knit next stitch through back of loop

Kfb = Increase 1 stitch by knitting into front and back of next stitch

P = Purl

P1tbl = Purl next stitch through back of loop

Rep = Repeat

RS = Right side

St(s) = Stitch(es)

WS = Wrong side