

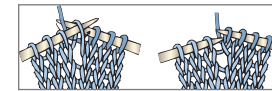


 KNIT | SKILL LEVEL: **INTERMEDIATE**

ABBREVIATIONS

2tog = Work next 2 stitches together: K2tog or P2tog to keep pattern continuity
Alt = Alternate(ing)
Approx = Approximately
Beg = Begin(ning)
C6B = Slip next 3 stitches onto cable needle and leave at back of work. K3, then K3 from cable needle
C6F = Slip next 3 stitches onto cable needle and leave at front of work. K3, then K3 from cable needle
C12B = Slip next 6 stitches onto cable needle and leave at back of work. K6, then K6 from cable needle

C12F = Slip next 6 stitches onto cable needle and leave at front of work. K6, then K6 from cable needle
Cont = Continue(ity)
Dec = Decrease(ing)
Inc = Increase(ing)
K = Knit
K2tog = Knit next 2 stitches together
M1 = Make 1 stitch by picking up horizontal loop lying before next stitch and knitting into back of loop



P = Purl
P2tog = Purl next 2 stitches together
Pat = Pattern
PM = Place marker
Rem = Remaining
Rep = Repeat
RS = Right side
St(s) = Stitch(es)
T5B = Slip next 2 stitches onto cable needle and leave at back of work. K3, then P2 from cable needle
T5F = Slip next 3 stitches onto cable needle and leave at front of work. P2, then K3 from cable needle
WS = Wrong side

MATERIALS

Patons® Shetland Chunky™ Tweeds (3 oz/85 g; 125 yds/114 m)

Sizes **XS/S** **M** **L** **XL** **2/3XL** **4/5XL**
 Med Blue Tweed (67108) **13** **14** **15** **16** **17** **19** **balls**

Sizes U.S. 9 (5.5 mm) and U.S. 10 (6 mm) knitting needles **or size needed to obtain gauge.** Cable needle. Stitch markers.

GAUGE

15 sts and 20 rows = 4" [10 cm] in stocking st with larger needles.



SIZES

To fit bust measurement

XS/S	28-34" [71-86.5 cm]
M	36-38" [91.5-96.5 cm]
L	40-42" [101.5-106.5 cm]
XL	44-46" [112-117 cm]
2/3XL	48-54" [122-137 cm]
4/5XL	56-62" [142-157.5 cm]

Finished bust measurement

XS/S	42" [106.5 cm]
M	45" [114.5 cm]
L	48" [122 cm]
XL	52" [132 cm]
2/3XL	60" [152.5 cm]
4/5XL	65" [165 cm]

INSTRUCTIONS

The instructions are written for smallest size. If changes are necessary for larger size(s) the instructions will be written thus (.). Numbers for each size are shown in the same color throughout the pattern. When only one number is given in black, it applies to all sizes.

Panel Pat A (worked over 18 sts). See chart on page 5.

1st row: C12F. K6.
2nd and alt rows: Purl.
3rd, 5th and 7th rows: Knit.
9th row: K6. C12B.

11th, 13th and 15th rows: Knit.
16th row: Purl.
 These 16 rows form Panel Pat A.

Panel Pat B (worked over 6 sts). See chart on page 5.

1st row: K6.
2nd and alt rows: P6.
3rd row: C6F.
5th and 7th rows: K6.
8th row: P6.
 These 8 rows form Panel Pat B.

Panel Pat C (worked over 6 sts). See chart on page 5.

1st row: K6.
2nd and alt rows: P6.
3rd row: C6B.
5th and 7th rows: K6.
8th row: P6.
 These 8 rows form Panel Pat C.

Panel Pat D (worked over 28 sts). See chart on page 5.

1st row: P6. C6F. P4. C6F. P6.
2nd and alt rows: Knit all knit sts and purl all purl sts as they appear.
3rd row: P4. (T5B. T5F) twice. P4.
5th row: P2. T5B. P4. C6B. P4. T5F. P2.
7th and 9th rows: P2. K3. P6. K6. P6. K3. P2.
11th row: P2. T5F. P4. C6B. P4. T5B. P2.

13th row: P4. (T5F. T5B) twice. P4.
14th row: As 2nd row.
 These 14 rows form Panel Pat D.

LEFT FRONT

With larger needles, cast on **44 (48-52-56-64-72)** sts.

1st row: (RS). K2. (P2. K2) **0 (1-2-3-5-7)** time(s). (P2. K6) 5 times. P2.
2nd and alt rows: Knit all knit sts and purl all purl sts as they appear.
3rd row: K2. (P2. K2) **0 (1-2-3-5-7)** time(s). (P2. C6F) 5 times. P2.
5th and 7th rows: As 1st row.
8th row: As 2nd row.
 Rep last 8 rows 8 times more, then 1st to 6th rows once. PM at end of last row.

Next row: (RS). K2. (P2. K2) **0 (1-2-3-5-7)** time(s). P2. [(K2. M1) twice. K2. P2] twice. K6. P2. [(K2. M1) twice. K2. P2] twice. **52 (56-60-64-72-80)** sts.

Next row: Knit all knit sts and purl all purl sts as they appear.

Proceed in pat as follows:

1st row: (RS). K2. (P2. K2) **0 (1-2-3-5-7)** time(s). P2. *Reading chart rows from right to left*, work 1st row of Panel Pat A. P2. Work 1st row of Panel Pat B. P2. Work 1st row of Panel Pat A. P2.

2nd row: K2. *Reading chart rows from left to right*, work 2nd row of Panel Pat A. K2. Work 2nd row of Panel Pat B. K2. Work 2nd row of Panel Pat A. K2. P2. (K2. P2) **0 (1-2-3-5-7)** time(s).

3rd row: K2. (P2. K2) **0 (1-2-3-5-7)** time(s). P2. Work 3rd row of Panel Pat A. P2. Work 3rd row of Panel Pat B. P2. Work 3rd row of Panel Pat A. P2.

4th row: K2. Work 4th row of Panel Pat A. K2. Work 4th row of Panel Pat B. K2. Work 4th row of Panel Pat A. K2. P2. (K2. P2) **0 (1-2-3-5-7)** time(s).

Panel Pats A and B are now in position.

Cont in pat until work from beg measures 26" [66 cm], ending on a WS row.

Shape V-neck and armhole:

1st row: (RS). Cast off **3 (4-6-6-8-11)** sts. Pat to last 4 sts. Work 2tog. P2. **48 (51-53-57-63-68)** sts.

2nd row: Work even in pat.

3rd row: Work 2tog. Pat to last 4 sts. Work 2tog. P2.

4th row: Pat to last 2 sts. Work 2tog. Rep last 2 rows **1 (1-1-1-2-2)** time(s) more. **42 (45-47-51-54-59)** sts.



Next row: (RS). Work 2tog. Pat to last 4 sts. Work 2tog. P2.

Next row: Work even in pat. Rep last 2 rows **3 (3-3-3-5-5)** times more. **34 (37-39-43-42-47)** sts.

Next row: (RS). Pat to last 4 sts. Work 2tog. P2.

Next row: Work even in pat. Rep last 2 rows (dec at neck edge only) until there are **19 (22-22-26-26-30)** sts, ending on a WS row.

Shape shoulder: Next row: Cast off **10 (11-11-13-13-15)** sts. Pat to end of row.

Next row: Work even in pat. Cast off rem **9 (11-11-13-13-15)** sts.

RIGHT FRONT

With larger needles, cast on **44 (48-52-56-64-72)** sts.

1st row: (RS). P2. (K6. P2) 5 times. K2. (P2. K2) **0 (1-2-3-5-7)** time(s).

2nd and alt rows: Knit all knit sts and purl all purl sts as they appear.

3rd row: P2. (C6B. P2) 5 times. K2. (P2. K2) **0 (1-2-3-5-7)** time(s).

5th and 7th rows: As 1st row.

8th row: As 2nd row.

Rep last 8 rows 8 times more, then 1st to 6th rows once. PM at end of last row.

Next row: (RS). P2. [(K2. M1) twice. K2. P2] twice. K6. P2. [(K2. M1) twice. K2. P2] twice. K2. (P2. K2) **0 (1-2-3-5-7)** time(s). **52 (56-60-64-72-80)** sts.

Next row: Knit all knit sts and purl all purl sts as they appear.

Proceed in pat as follows:

1st row: (RS). P2. Work 1st row of Panel Pat A. P2. Work 1st row of Panel Pat C, *reading row from right to left*. P2. Work 1st row of Panel Pat A. P2. K2. (P2. K2) **0 (1-2-3-5-7)** time(s).

2nd row: P2. (K2. P2) **0 (1-2-3-5-7)** time(s). K2. Work 2nd row of Panel Pat A. K2. Work 2nd row of Panel Pat C, *reading row from left to right*. K2. Work 2nd row of Panel Pat A. K2.

3rd row: P2. Work 3rd row of Panel Pat A. P2. Work 3rd row of Panel Pat C, P2. Work 3rd row of Panel Pat A. P2. K2. (P2. K2) **0 (1-2-3-5-7)** time(s).

4th row: P2. (K2. P2) **0 (1-2-3-5-7)** time(s). K2. Work 4th row of Panel Pat A. K2. Work 4th row of Panel Pat C. K2. Work 2nd row of Panel Pat A. K2.

Panel Pats A and B are now in position.

Cont in pat until work from beg measures 26" [66 cm], ending on a RS row. PM at beg of last row.

Shape V-neck and armhole:

1st row: (WS). Cast off **3 (4-6-6-8-11)** sts. Pat to end of row. **48 (51-53-57-63-68)** sts.

2nd row: P2. Work 2tog. Pat to last 2 sts. Work 2tog.

3rd row: Work 2tog. Pat to end of row. Rep last 2 rows **1 (1-1-1-2-2)** time(s) more. **42 (45-47-51-54-59)** sts.

Next row: (RS). P2. Work 2tog. Pat to last 2 sts. Work 2tog.

Next row: Pat even. Rep last 2 rows **3 (3-3-3-5-5)** times more. **34 (37-39-43-42-47)** sts.

Next row: (RS). P2. Work 2tog. Pat to end of row.

Next row: Pat even. Rep last 2 rows until there are **19 (22-22-26-26-30)** sts, ending on a RS row.

Shape shoulder: Next row: Cast off **10 (11-11-13-13-15)** sts. Pat to end of row.

Next row: Work even in pat. Cast off rem **9 (11-11-13-13-15)** sts.

BACK

With larger needles, cast on **96 (104-112-120-136-152)** sts.

1st row: (RS). K2. (P2. K2) **0 (1-2-3-5-7)** time(s). (P2. K6) 4 times. P6. K6. P4. K6. P6. (K6. P2) 4 times. K2. (P2. K2) **0 (1-2-3-5-7)** time(s).

2nd and alt rows: Knit all knit sts and purl all purl sts as they appear.

3rd row: K2. (P2. K2) **0 (1-2-3-5-7)** time(s). (P2. C6F) 4 times. P6. C6F. P4. C6F. P6. (C6B. P2) 4 times. K2. (P2. K2) **0 (1-2-3-5-7)** time(s).

5th and 7th rows: As 1st row.

8th row: As 2nd row.

Rep last 8 rows 8 times more, then 1st to 6th rows once. PM at each end of last row.

Next row: (RS). K2. (P2. K2) **0 (1-2-3-5-7)** time(s). P2. K6. P2. [(K2. M1) twice. K2. P2] twice. K6. P6. K6. P4. K6. P6. K6. P2. [(K2. M1) twice. K2. P2] twice. K6. P2. K2. (P2. K2) **0 (1-2-3-5-7)** time(s). **104 (112-120-128-144-160)** sts.



Next row: Knit all knit sts and purl all purl sts as they appear.

Proceed in pat as follows:

1st row: (RS). (K2. P2) **1 (2-3-4-6-7)** time(s). Work 1st row of Panel Pat B, *reading row from right to left*. P2. Work 1st row of Panel Pat A, *reading row from right to left*. P2. Work 1st row of Panel Pat B. Work 1st row of Panel Pat D, *reading row from right to left*. Work 1st row of Panel Pat C, *reading row from right to left*. P2. Work 1st row of Panel Pat A. P2. Work 1st row of Panel Pat C. (P2. K2) **1 (2-3-4-6-7)** time(s).

2nd row: (P2. K2) **1 (2-3-4-6-7)** time(s). Work 2nd row of Panel Pat C, *reading row from left to right*. K2. Work 2nd row of Panel Pat A, *reading row from left to right*. K2. Work 2nd row of Panel Pat C. Work 2nd row of Panel Pat D, *reading row from left to right*. Work 2nd row of Panel Pat B, *reading row from left to right*. K2. Work 2nd row of Panel Pat A. K2. Work 2nd row of Panel Pat B. (K2. P2) **1 (2-3-4-6-7)** time(s).

3rd row: (K2. P2) **1 (2-3-4-6-7)** time(s). Work 3rd row of Panel Pat B. P2. Work 3rd row of Panel Pat A. P2. Work 3rd row of Panel Pat B. Work 3rd row of Panel Pat D. Work 3rd row of Panel Pat C. P2. Work 3rd row of Panel Pat A. P2. Work 3rd row of Panel Pat C. (P2. K2) **1 (2-3-4-6-7)** time(s).

4th row: (P2. K2) **1 (2-3-4-6-7)** time(s). Work 4th row of Panel Pat C. K2. Work 4th row of Panel Pat A. K2. Work 4th row of Panel Pat C. Work 4th row of Panel Pat D. Work 4th row of Panel Pat B. K2. Work 4th row of Panel Pat A. K2. Work 4th row of Panel Pat B. (K2. P2) **1 (2-3-4-6-7)** time(s). Panel Pats A, B, C and D are now in position.

Cont in pat until work from beg measures 26" [66 cm], ending on a WS row.

Shape armhole: Keeping cont of pat, cast off **3 (4-6-6-8-11)** sts beg next 2 rows. **98 (104-108-116-128-138)** sts.

Dec 1 st each end of needle on next **5 (5-5-5-6-6)** rows, then every following alt row **3 (3-3-3-6-6)** times. **82 (88-92-100-104-114)** sts.

Cont even in pat until armhole measures same length as Front to shoulder, ending on a WS row.

Shape shoulders: Keeping cont of pat, cast off **10 (11-11-13-12-15)** sts beg next 2 rows, then **9 (11-11-13-13-15)** sts beg following 2 rows.

Cast off rem **44 (44-48-48-54-54)** sts.

SLEEVES

With smaller needles, cast on **42 (42-50-50-58-58)** sts.

1st row: (RS). P2. *K2. P2. Rep from * to end of row.

2nd row: K2. *P2. K2. Rep from * to end of row.

Rep last 2 rows of (P2. K2) ribbing for 6" [15 cm], ending on a WS row.

Change to larger needles and proceed as follows:

1st row: (RS). P2. Work 1st row of Panel Pat B. Rep from * to last 2 sts. P2.

2nd row: K2. Work 2nd row of Panel Pat B. Rep from * to last 2 sts. K2.

Panel Pat B is now in position.

Sizes XS/S, M, L and XL only: Cont in pat, inc 1 st each end of needle on next and every following 4th row until there are **68 (68-80-80)** sts, taking inc sts into pat.

Sizes 2/3XL and 4/5XL only: Cont in pat, inc 1 st each end of needle on next and every following alt row until there are **(68-94)** sts, then every following 4th row until there are **(86-96)** sts, taking inc sts into pat.

All sizes: Cont even in pat until work from beg measures **18 (18-18-18-17-16½)" [45.5 (45.5-45.5-45.5-43-42) cm]**, ending on a WS row.

Shape top: Keeping cont of pat, cast off **3 (3-5-5-7-9)** sts beg next 2 rows. **62 (62-70-70-72-78)** sts.

Dec 1 st each end of needle on 3rd row and following 4th row, then every following alt row **7 (7-7-7-9-9)** times, then every row **6 (6-8-8-8-10)** times. Cast off 3 sts beg next 2 rows. Cast off rem **26 (26-30-30-28-30)** sts.



FINISHING

Pin garment pieces to measurements. Cover with damp cloth, leaving cloth to dry.

PM 8" [20.5 cm] up from cast on edge on side edges of Fronts and Back for slits.

Sew shoulder seams. Sew in sleeves. Sew sleeve seams and side seams to markers, leaving slits open.

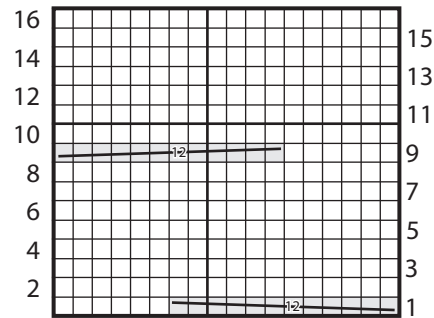
Neckband: With smaller needles, cast on 12 sts.

1st row: (RS). K2. *P1. K1. Rep from * to end of row.

2nd row: *P1. K1. Rep from * to end of row.

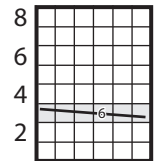
Rep last 2 rows of (K1. P1) ribbing until band measures length to fit up Left Front, across back neck edge and down Right Front, sewing in position as you work. Cast off.

Panel Pat A



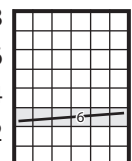
Start Here

Panel Pat B



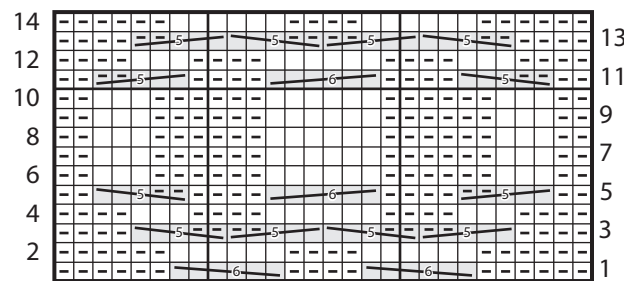
Start Here

Panel Pat C



Start Here

Panel Pat D



Start Here

Key

- = Knit on RS rows. Purl on WS rows
- ◻ = Purl on RS rows. Knit on WS rows



