

# Patons® Classic Wool

## Patons® DECOR



**COUNTRY JACKET**

### SIZES

#### Bust measurement

<b>Small</b>	30-32 ins [76-81 cm]
<b>Medium</b>	34-36 ins [86-91 cm]
<b>Large</b>	38-40 ins [97-102 cm]

#### Finished bust

<b>Small</b>	45 ins [114.5 cm]
<b>Medium</b>	48 ins [122 cm]
<b>Large</b>	51 ins [129.5 cm]

### TENSION

20 sts and 22 rows = 4 ins [10 cm]  
with larger needles in fair isle pat.

### MATERIALS

Patons Classic Wool (100 g/3.5 oz)  
or Patons Décor (100 g/3.5 oz)

Size	S	M	L	
<b>Main color (MC)</b> (Navy)	4	4	5	<b>balls</b>
<b>Contrast A</b> (Dk Green)	1	2	2	<b>ball(s)</b>
<b>Contrast B</b> (Beige)	3	3	3	<b>balls</b>
<b>Contrast C</b> (Lt Green)	1	1	1	<b>ball</b>
<b>Contrast D</b> (Red)	2	2	2	<b>balls</b>
<b>Contrast E</b> (Olive)	1	1	1	<b>ball</b>

Sizes 4 mm (U.S. 6) and 4.5 mm (U.S. 7) knitting needles **or size needed to obtain tension**. 2 st holders. Size 4 mm (U.S. 6) circular knitting needle 36 ins [90 cm] long. 5 buttons.

### INSTRUCTIONS

*The instructions are written for smallest size. If changes are necessary for larger sizes the instructions will be written thus ( ).*

**Note:** When working from charts, carry yarn not in use loosely across WS of work but never over more than 5 sts. When it must pass over more than 5 sts, weave it over and under color in use on

next st or at center point of sts it passes over. The colors are never twisted around one another.

### BACK

With MC and smaller needles cast on 110 (**118-126**) sts.

**1st row:** (RS). K2. \*P2. K2. Rep from \* to end of row.

**2nd row:** P2. \*K2. P2. Rep from \* to end of row.

Rep these 2 rows (K2. P2) ribbing for 2½ ins [6 cm] ending on a 2nd row and inc 3 (**3-1**) st(s) evenly across last row. 113 (**121-127**) sts.

Change to larger needles and work Chart I in stocking st to row 78 of chart reading **knit** rows from **right** to left and **purl** rows from **left** to right.

**Armhole shaping:** Keeping cont of chart, cast off 12 (**14-14**) sts beg next 2 rows. 89 (**93-99**) sts.

Cont working Chart I in stocking st to row 134 (**136-138**) of chart reading **knit** rows from **right** to left and **purl** rows from **left** to right.

**Shoulder shaping:** Cast off 9 (**10-10**) sts beg next 4 rows, then 10 (**9-11**) sts beg following 2 rows. Cast off rem 33 (**35-37**) sts.



ABBREVIATIONS: [www.patonsyarns.com/glossary](http://www.patonsyarns.com/glossary)

Patons®

... a part of your life.

P.O. Box 40, Listowel ON N4W 3H3

## **POCKET LININGS** (Make 2)

With MC and larger needles cast on 29 sts and work 32 rows in stocking st, ending with RS facing for next row and inc 1 st in center of last row. Leave these 30 sts on a spare needle.

### **LEFT FRONT**

With MC and smaller needles cast on 55 (59-63) sts.

**1st row:** (RS). K2. \*P2. K2. Rep from \* to last st. K1.

**2nd row:** K1. \*P2. K2. Rep from \* to last 2 sts. P2.

Rep these 2 rows ribbing for 2½ ins [6 cm] ending on a 2nd row and inc 1 (1-0) st in center of last row. 56 (60-63) sts.

Change to larger needles and work Chart I in stocking st to row 30 of chart reading **knit** rows from **right** to left and **purl** rows from **left** to right.

**Pocket placement: Next row:** Pat across 9 (11-14) sts. Slip next 30 sts onto a st holder. Pat across 30 sts from pocket lining. Pat to end of row.

Cont working Chart I in stocking st to row 78 of chart reading **knit** rows from **right** to left and **purl** rows from **left** to right.

**Armhole shaping:** Keeping cont of chart, cast off 12 (14-14) sts beg next row. 44 (46-49) sts.

Cont working Chart I in stocking st to row 86 of chart reading **knit** rows from **right** to left and **purl** rows from **left** to right.

**Neck shaping: Next row:** (RS). Pat to last 2 sts from chart. K2tog (neck edge).

Work 1 row even from chart.

Keeping cont of chart, dec 1 st at neck edge on next and following 11 alt rows, then on following 4th rows until there are 28 (29-31) sts.

Work 11 (9-7) rows even from chart, ending with RS facing for next row.

**Shoulder shaping:** Cast off 9 (10-10) sts beg next and following alt row. Work 1 row even. Cast off rem 10 (9-11) sts.

### **RIGHT FRONT**

With MC and smaller needles cast on 55 (59-63) sts.

**1st row:** (RS). K3. \*P2. K2. Rep from \* to end of row.

**2nd row:** \*P2. K2. Rep from \* to last 3 sts. P2. K1.

Rep these 2 rows ribbing for 2½ ins [6 cm] ending on a 2nd row and inc 1 (1-0) st in center of last row. 56 (60-63) sts.

Change to larger needles and work Chart I in stocking st to row 30 of chart reading **knit** rows from **right** to left and **purl** rows from **left** to right.

**Pocket placement: Next row:** Pat across 17 (19-19) sts. Slip next 30 sts onto a st holder. Pat across 30 sts from pocket lining. Pat to end of row.

Cont working Chart I in stocking st to row 79 of chart reading **knit** rows from **right** to left and **purl** rows from **left** to right.

**Armhole shaping:** Keeping cont of chart, cast off 12 (14-14) sts beg next row. 44 (46-49) sts.

Cont working Chart I in stocking st to row 86 of chart reading **knit** rows from **right** to left and **purl** rows from **left** to right.

**Neck shaping: Next row:** (RS). Work 2tog (neck edge). Pat from chart to end of row.

Work 1 row even from chart.

Keeping cont of chart, dec 1 st at neck edge on next and following 11 alt rows, then on following 4th rows until there are 28 (29-31) sts.

Work 12 (10-8) rows even from chart, ending with **WS** facing for next row.

**Shoulder shaping:** Cast off 9 (10-10) sts beg next and following alt row. Work 1 row even. Cast off rem 10 (9-11) sts.

## SLEEVES

With MC and smaller needles cast on 46 (46-50) sts. Work 4½ ins [11.5 cm] in (K2. P2) ribbing as given for Back ending on a 2nd row and inc 19 (21-21) sts evenly across last row. 65 (67-71) sts.

Change to larger needles and work Chart II in stocking st to end of chart reading **knit** rows from **right** to left and **purl** rows from **left** to right, noting side incs on 5th and following 4th rows until there are 101 (105-111) sts. Place markers on side edges of Sleeves 12 (14-14) rows down from cast off edge.

## FINISHING

Pin garment pieces to measurements and press lightly with a damp cloth leaving to dry on garment pieces.

**Collar:** With MC and circular needle cast on 366 (366-374) sts. **Do not join.** Working back and forth across needle, proceed as follows:

Beg on a 2nd row, work 4 rows in (K2. P2) ribbing as given for Back.

**5th row:** Rib across 3 sts. \*Cast off 2 sts. Rib across 22 (22-23) sts (including st on needle after cast off). Rep from \* 3 times more. Cast off 2 sts. Rib to end of row.

**6th row:** Rib, casting on 2 sts over cast off sts.

Work a further 4 rows ribbing.

**Shape collar:** Keeping cont of rib, cast off 103 sts beg next 2 rows. 160 (160-168) sts.

Dec 1 st each end of needle on next 6 rows, cast off 3 sts beg next 36 rows, then cast off 4 (4-6) sts beg next 2 rows. Cast off rem 32 (32-36) sts in ribbing.







Sew shoulder seams. Sew cast off edge of Collar to Cardigan sewing long cast off edges of Collar to front edges between lower edge and beg of front slope dec. Sew final cast off edge along back neck edge.

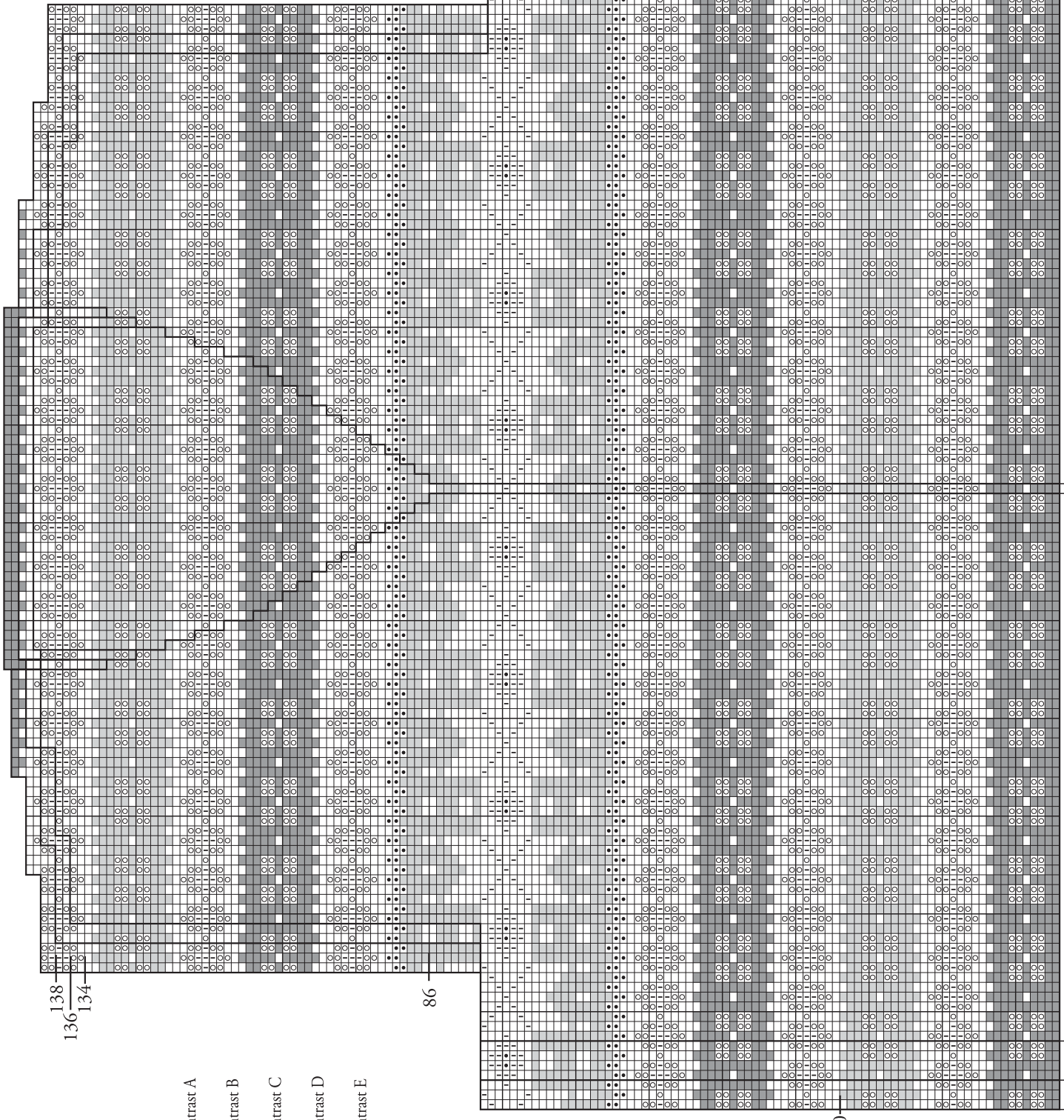
**Pocket Borders:** With RS of work facing MC and smaller needles, knit across 30 sts from pocket st holder.

Beg on a 2nd row, work 5 rows in (K2. P2) ribbing as given for Back. Cast off in ribbing.

Sew in sleeves placing rows below markers along armhole cast off edges to form a square armhole. Sew side and sleeve seams reversing seam for cuff turnback. Sew pocket borders in position on RS and pocket linings in position on wrong side. Sew buttons to correspond to buttonholes. Press seams.

# CHART I

- Key
-  = MC
  -  = Contrast A
  -  = Contrast B
  -  = Contrast C
  -  = Contrast D
  -  = Contrast E



L M S

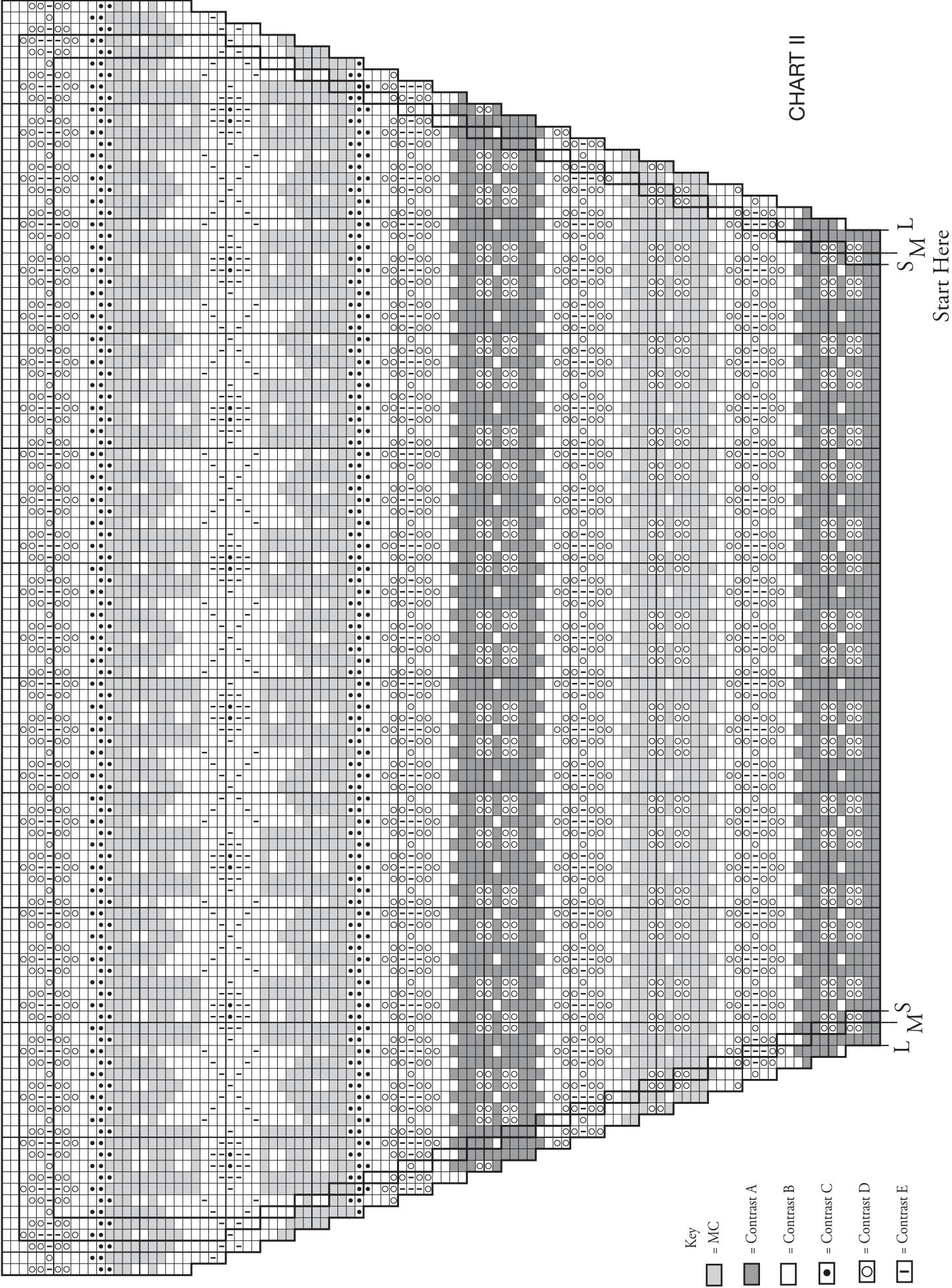
Right Front Edge: Start Here

Left Front Edge: Start Here

S M L

Back and Left Front: Start Here

CHART II



- Key
- MC
  - Contrast A
  - Contrast B
  - Contrast C
  - Contrast D
  - Contrast E

L M S

Start Here