

**Patons**  
Classic Wool

**Patons**  
DECOR



## SOFTLY IN FAIR ISLE

### SIZES

#### Bust measurement

Small	30-32 ins [76-81	cm ]
Medium	34-36 ins [86-91	cm ]
Large	38-40 ins [97-102	cm ]
Extra-Large	42-44 ins [107-112	cm ]

#### Finished bust

Small	38 ins [97	cm ]
Medium	41 ins [104	cm ]
Large	45 ins [114.5	cm ]
Extra-Large	47 ins [119.5	cm ]

### TENSION

21½ sts and 24 rows = 4 ins [10 cm]  
with larger needles in fair isle pat.

### MATERIALS

Patons Classic Wool (100 g/3.5 oz)  
or Patons Décor (100 g/3.5 oz)

Size	S	M	L	XL	
Main color (MC) (Dk Beige)	2	2	2	2	balls
Contrast A (Aran)	1	2	2	2	ball(s)
Contrast B (Blue)	1	1	1	1	ball
Contrast C (Peach)	1	1	1	1	ball

Sizes 4 mm (U.S. 6) and 4.5 mm (U.S. 7)  
knitting needles or size needed to  
obtain tension. 5 buttons.

### INSTRUCTIONS

*The instructions are written for smallest size. If changes are necessary for larger sizes the instructions will be written thus ( ).*

**Note:** When working from chart, carry yarn not in use loosely across WS of work but never over more than 5 sts. When it must pass over more than 5 sts, weave it over and under color in use on next st or at center point of sts it passes over. The colors are never twisted around one another.

#### BACK

With B and larger needles cast on 103 (111-121-127) sts.

Work Chart in stocking st to end of chart reading knit rows from right to left and purl rows from left to right. Cast off rem 35 (37-39-39) sts.

#### LEFT FRONT

\*\*With B and larger needles cast on 43 (47-52-55) sts.

Work Chart in stocking st to row 15 of chart reading knit rows from right to left and purl rows from left to right noting front curve shaping on row 3 and following 6 alt rows of chart until there are 50 (54-59-62) sts.\*\*

Cont working to row 60 of chart.

**Shape armholes and front:** Keeping cont of chart, cast off 7 (8-10-11) sts beg next row. Work 1 row even. Dec 1 st at armhole edge on next and following alt row. 41 (44-47-49) sts. Work 1 row even.

**Next row:** Work 2tog. Work chart to last 2 sts. Work 2tog (front edge).

Work 1 row even.

Rep last 2 rows 6 (7-9-9) times more. 27 (28-27-29) sts.

Dec 1 st at front edge only on next and following 3 (5-4-4) alt rows. 23 (22-22-24) sts. Dec 1 st at front edge only on following 4th rows from previous dec until there are 18 (19-19-21) sts. Cont even until row 112 (114-118-118) of chart is complete.

**Shoulder shaping:** Cast off 9 (10-10-11) sts beg next row. Work 1 row even. Cast off rem 9 (9-9-10) sts.

#### RIGHT FRONT

Work from \*\* to \*\* as given for Left Front.

Cont working to row 61 of chart.

**Shape armholes and front:** Keeping cont of chart, cast off 7 (8-10-11) sts beg next row. Dec 1 st at armhole edge on next and following alt row. 41 (44-47-49) sts. Work 1 row even.



ABBREVIATIONS: [www.patonsyarns.com/glossary](http://www.patonsyarns.com/glossary)

**Patons**

... a part of your life.

P.O. Box 40, Listowel ON N4W 3H3

**Next row:** Work 2tog (front edge). Work chart to last 2 sts. Work 2tog. Work 1 row even. Rep last 2 rows 6 (7-9-9) times more. 27 (28-27-29) sts.

Dec 1 st at front edge only on next and following 3 (5-4-4) alt rows. 23 (22-22-24) sts. Dec 1 st at front edge only on following 4th rows from previous dec until there are 18 (19-19-21) sts. Cont even until row 113 (115-119-119) of chart is complete.

**Shoulder shaping:** Cast off 9 (10-10-11) sts beg next row. Work 1 row even. Cast off rem 9 (9-9-10) sts.

## FINISHING

Pin garment pieces to measurements, cover with a damp cloth. Steam lightly with iron. Remove cloth when dry.

**Armbands:** Sew shoulder seams. With RS of work facing, MC and smaller needles pick up and knit 95 (99-105-107) sts evenly along armhole edge.

**1st row:** K1. \*P1. K1. Rep from \* to end of row.

Last row forms seed st pat.

Work a further 6 rows seed st pat. Cast off in pat.

**Button and Buttonhole Band:** Sew RS seam. With MC and smaller needles cast on 8 sts.

**1st row:** (K1. P1) 4 times.

**2nd row:** (P1. K1) 4 times.

These 2 rows form seed st pat.

Cont in seed st pat until band, when slightly stretched, measures length to fit across lower edge of Left Front and up curved edge to beg of front shaping, sewing in place as you work. Mark positions for 5 buttons on this band

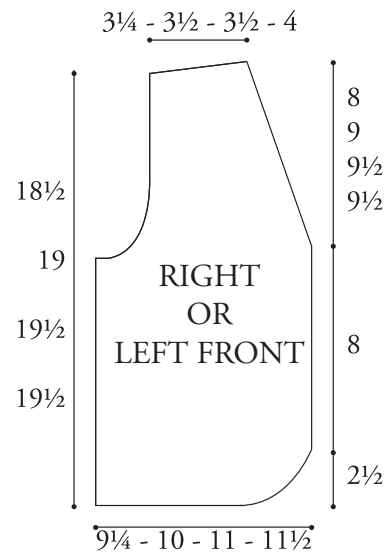
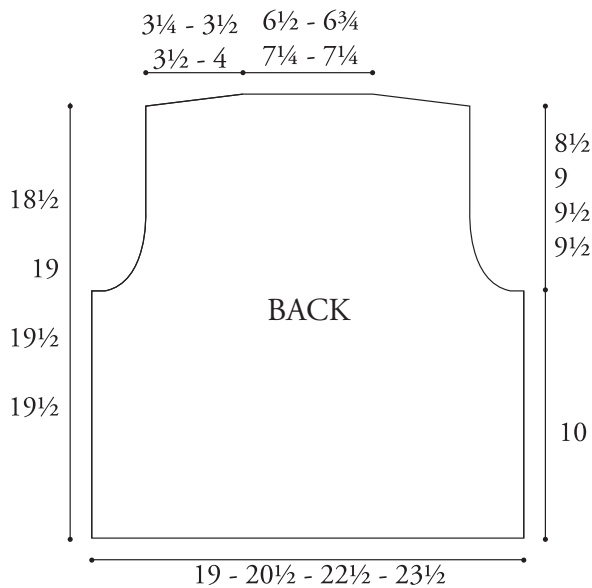
having top button ½ inch [1 cm] below first front dec, bottom button ½ inch [1 cm] above last front curve inc and rem 3 buttons spaced evenly between.

Cont in seed st pat until band measures length to fit around rem of Left Front neck edge, across Back neck edge and down Right Front neck edge to beg of front shaping. Work buttonholes to correspond to button positions as follows:





**1st row:** (RS). Pat across 3 sts. Cast off 2 sts. Pat to end of row.

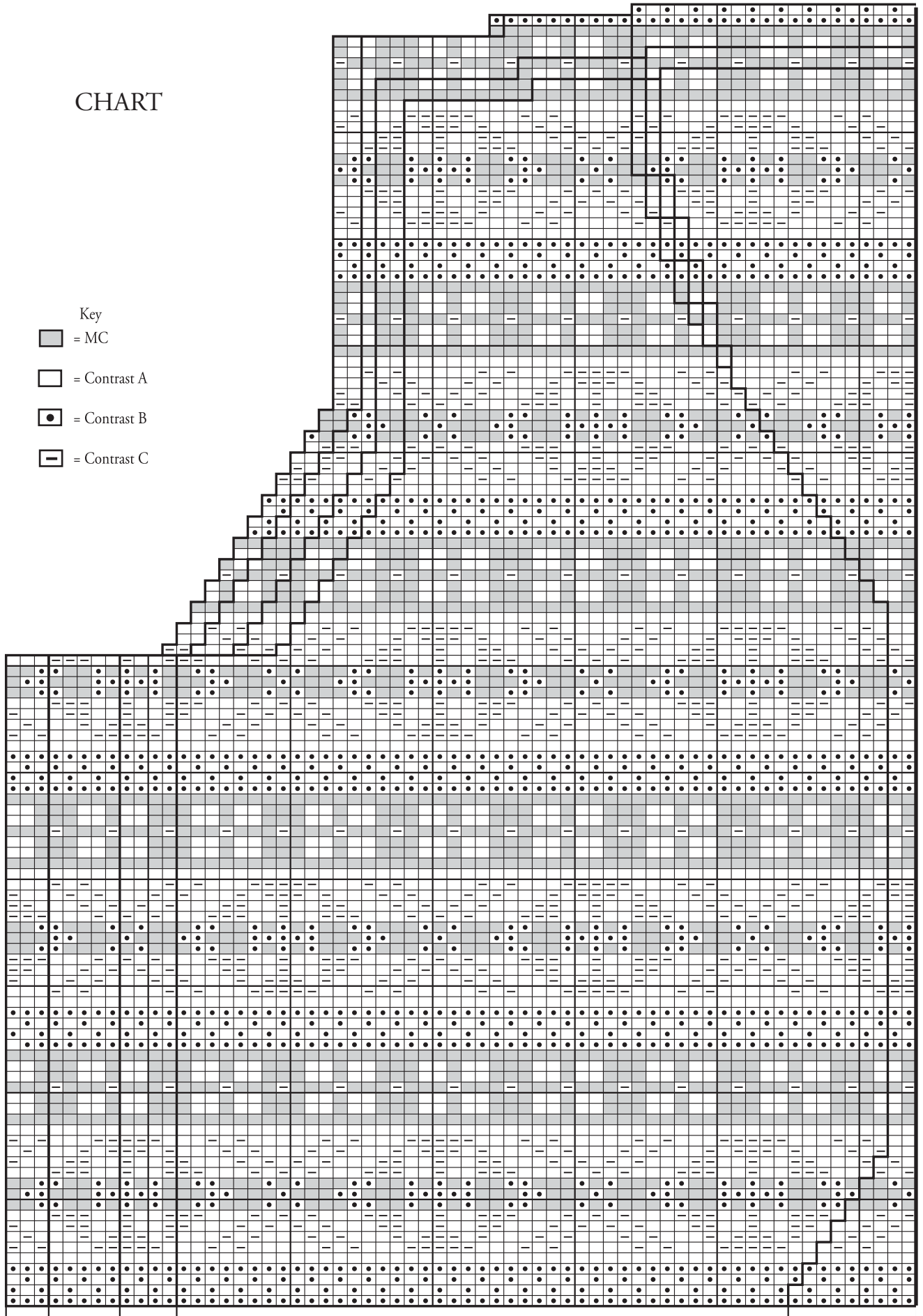
**2nd row:** Pat, casting on 2 sts over cast off sts.

Cont even in seed st pat until band measures length to fit around Right Front curve and lower edge then across lower edge of Back. Cast off in pat. Sew left side and band seam. Sew buttons to correspond to buttonholes.



# CHART

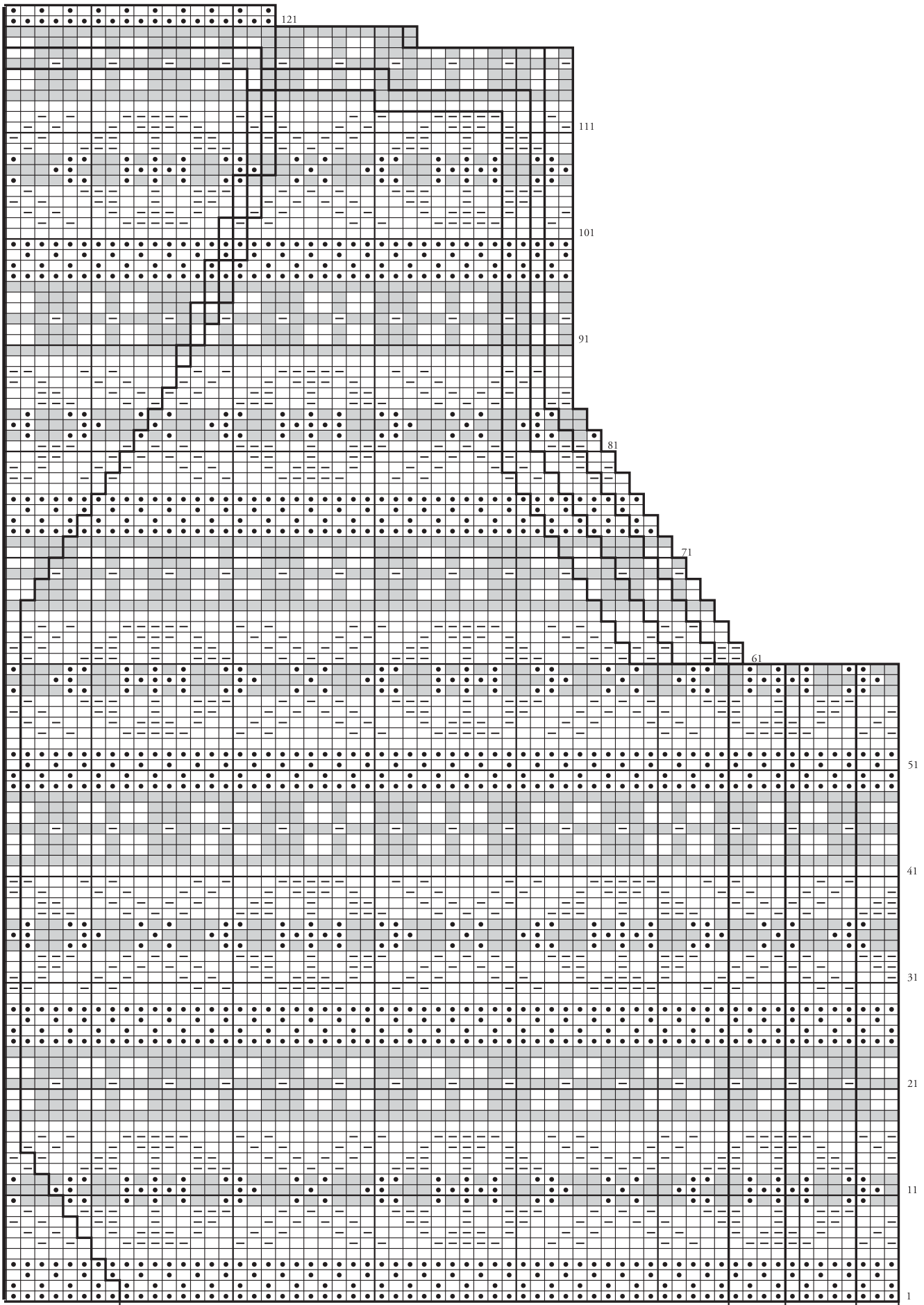
- Key
-  = MC
  -  = Contrast A
  -  = Contrast B
  -  = Contrast C



XL L M S

Right Front:  
Start Here

Chart continued on next page



Left Front  
Edge

S M L XL

Back and Left Front  
Start Here