

# 4 Long Vest



INTERMEDIATE

## SIZES


To fit bust measurement
<b>Extra-Small/Small</b> 28-34 ins [ 71-86.5 cm ]
<b>Medium</b> 36-38 ins [ 91.5-96.5 cm ]
<b>Large</b> 40-42 ins [ 101.5-106.5 cm ]
<b>Extra-Large</b> 44-46 ins [ 112-117 cm ]
<b>2 Extra-Large/3 Extra-Large</b> 48-54 ins [ 122-137 cm ]
<b>4 Extra-Large/5 Extra-Large</b> 56-62 ins [ 142-157.5 cm ]

Finished bust
<b>X-Small/Small</b> 35½ ins [ 90 cm ]
<b>Medium</b> 40 ins [ 101.5 cm ]
<b>Large</b> 44½ ins [ 113 cm ]
<b>X-Large</b> 49 ins [ 124.5 cm ]
<b>2/3X Large</b> 56½ ins [ 143.5 cm ]
<b>4/5X Large</b> 65 ins [ 165 cm ]

## TENSION

20 sts and 26 rows = 4 ins [10 cm]  
with larger needles in stocking st.

## Materials

Patons® classic Wool (100 g/3.5 oz)							
	Xs/s	M	I	XI	2/3XI	4/5XI	
 00202 (Aran)	5	6	6	7	8	8	balls

Sizes 4 mm (U.S. 6) and 4.5 mm (U.S. 7) knitting needles. Size 4 mm (U.S. 6) circular knitting needle 24 ins [60 cm] long **or size needed to obtain tension.** Cable needle. 4 buttons.

### stitch glossary

**alt** = Alternate.

**Beg** = Beginning.

**c6B** = Slip next 3 stitches onto a cable needle and leave at back of work.

K3, then K3 from cable needle.

**c6F** = Slip next 3 stitches onto a cable needle and leave at front of work.

K3, then K3 from cable needle.

**cont** = Continue(ity).

**Dec** = Decrease(ing).

**inc** = Increase 1 stitch by knitting into front and back of next stitch.

**K** = Knit.

**K2tog** = Knit next 2 stitches together.

**M1P** = Make one stitch by picking up horizontal loop lying before next stitch and purling into back of loop. (See page 26).

**P** = Purl.

**P2tog** = Purl next 2 stitches together.

**Pat** = Pattern.

**rem** = Remaining.

**rep** = Repeat.

**rs** = Right side.

**st(s)** = Stitch(es).

**Ws** = Wrong side.

## Instructions

*The instructions are written for smallest size. If changes are necessary for larger sizes the instructions will be written thus ( ). Numbers for each size are shown in the same color throughout the pattern. When only one number is given in black, it applies to all sizes.*

**Panel Pat a** (worked over 9 sts).

(See page 21).

**1st row:** (RS). K3. C6F.

**2nd and alt rows:** P9.

**3rd and 5th rows:** K9.

**7th row:** As 1st row.

**9th row:** As 3rd row.

**11th row:** C6B. K3.

**13th and 15th rows:** As 3rd row.

**17th row:** As 11th row.

**19th row:** As 3rd row.

**20th row:** As 2nd row.

These 20 rows form Panel Pat A.

**Panel Pat B** (worked over 9 sts).  
(See page 21).

**1st row:** (RS). C6B. K3.

**2nd and alt rows:** P9.

**3rd and 5th rows:** K9.

**7th row:** As 1st row.

**9th row:** As 3rd row.

**11th row:** K3. C6F.

**13th and 15th rows:** As 3rd row.

**17th row:** As 11th row.

**19th row:** As 3rd row.

**20th row:** As 2nd row.

These 20 rows form Panel Pat B.

## LEFT FRONT

With larger needles, cast on **49** (**55-61-67-79-91**) sts.

**1st row:** (RS). K3. (P3. K3) **5** (**6-7-8-10-12**) times. P1. (K3. P3) twice. K3.

**2nd row:** P3. (K3. P3) twice. K1. (P3. K3) **5** (**6-7-8-10-12**) times. P3.

Rep last 2 rows of ribbing until work from beg measures 4 ins [10 cm], ending with a WS row.

**Sizes 2/3XL and 4/5XL only: Next row:** [P(**26-10**). P2tog. P(**26-10**)] (**1-3**) time(s). K9. P1. K9. P6. (**78-88**) sts.

**Next row:** K6. P9. K1. P9. Knit to end of row.

**All sizes:** Proceed in pat as follows:

**1st row:** (RS). P**24** (**30-36-42-53-63**).

Work 1st row of Panel Pat A. P1.

Work 1st row of Panel Pat B. Purl to end of row.

**2nd row:** K6. Work 2nd row of Panel Pat B. K1. Work 2nd row of Panel Pat A. Knit to end of row.

Panel Pats A and B are now in position.

Cont even in pat until work from beg measures 6 ins [15 cm], ending with a WS row.

**Shape sides: Next row:** P2. P2tog. Pat to end of row.

Work 11 rows even.

Rep last 12 rows 4 times more. **44** (**50-56-62-73-83**) sts.

Cont even until work from beg measures 17 ins [43 cm], ending with a WS row.

**Shape Front and sides: Next row:** P2. M1P. P**14** (**20-26-32-43-53**). P2tog. P1. Pat to end of row.

Keeping cont of pat, inc 1 st at side edge, as before, on every following **12th** (**12th-12th-12th-22nd-22nd**) row from previous inc **2** (**2-2-2-1-1**) time(s) more, AT SAME TIME, dec 1 st for front edge (before Cable Pat) on 2nd and every following alt row **1** (**5-7-6-6-3**) time(s) more, then every following 4th row **7** (**5-4-5-5-6**) times. **37** (**41-46-52-62-74**) sts.

Work **3** (**3-3-1-1-3**) row(s) even.

**Sizes XS/S, M, L and 4/5XL only:**  
**Next row:** (RS). Cast off **5 (5-8-19)** sts.  
Pat to last 3 sts. P2tog. P1. **31 (35-37-54)** sts.

**Next row:** Work even in pat.

**Sizes XL and 2/3XL only: Next row:**  
(RS). Cast off **(11-15)** sts. Pat to end  
of row. **(41-47)** sts.

**Next row:** Work even in pat.

**All sizes:** Keeping cont of pat, dec 1 st  
at armhole edge on next **5 (7-9-9-13-19)**  
rows, then every following alt row  
**4 (5-4-5-5-5)** times, AT SAME TIME,  
dec 1 st at front edge (on last 3 sts) on  
every following 4th row from previous  
dec **11 (12-12-13-13-13)** times. **11 (11-12-14-16-17)** sts.

Work 3 rows even.

**Shape shoulders:** Cast off **6 (6-6-7-8-9)**  
sts beg of next row. Work 1 row  
even. Cast off rem **5 (5-6-7-8-8)** sts.

## RIGHT FRONT

With larger needles, cast on **49 (55-61-67-79-91)** sts.

**1st row:** (RS). K3. (P3. K3) twice. P1.  
(K3. P3) **5 (6-7-8-10-12)** times. K3.

**2nd row:** P3. (K3. P3) **5 (6-7-8-10-12)**  
times. K1. (P3. K3) twice. P3.

Rep last 2 rows of ribbing until work  
from beg measures 4 ins [10 cm],  
ending with a WS row.

**Sizes 2/3XL and 4/5XL only: Next  
row:** P6. K9. P1. K9. [P**(26-10)**. P2tog.  
P**(26-10)**] **(1-3)** time(s). **(78-88)** sts.

**Next row:** Knit to last 25 sts. K6. P9.  
K1. P9.

**All sizes:** Proceed in pat as follows:

**1st row:** (RS). P6. Work 1st row of  
Panel Pat B. P1. Work 1st row of Panel  
Pat A. Purl to end of row.

**2nd row:** **K24 (30-36-42-53-63)**. Work  
2nd row of Panel Pat A. K1. Work 2nd  
row of Panel Pat B. Knit to end of row.  
Panel Pats A and B are now in position.

Cont even in pat until work from beg  
measures 6 ins [15 cm], ending with  
a WS row.

**Shape sides: Next row:** Pat to last  
4 sts. P2tog. P2.

Work 11 rows even.

Rep last 12 rows 4 times more. **44 (50-56-62-73-83)** sts.

Cont even until work from beg  
measures 17 ins [43 cm], ending with  
a WS row.

**Shape Front and sides: Next row:**  
Pat across next 25 sts. P1. P2tog. Purl  
to last 2 sts. M1P. P2.

Keeping cont of pat, inc 1 st at side  
edge, as before, on every following

**12th (12th-12th-12th-22nd-22nd) row 2 (2-2-2-1-1) time(s) more, AT SAME TIME, dec 1 st at front edge (after Cable Pat) on 2nd and every following alt row 1 (5-7-6-6-3) time(s) more, then every following 4th row 7 (5-4-5-5-6) times. 37 (41-46-52-62-74) sts.**

Work **3 (3-3-2-2-3)** row(s) even.

**Sizes XS/S, M, L and 4/5XL only:**

**Next row:** (RS). P1. P2tog. Pat to end of row.

**Next row:** Cast off **5 (5-8-19)** sts. Pat to end of row. **31 (35-37-54)** sts.

**Sizes XL and 2/3XL only:**

**Next row:** (WS). Cast off **(11-15)** sts. Pat to end of row. **(41-47)** sts.

**All sizes:** Keeping cont of pat, dec 1 st at armhole edge on next **5 (7-9-9-13-19)** rows, then every following alt row **4 (5-4-5-5-5)** times, AT SAME TIME, dec 1 st at front edge (across first 3 sts) on every following 4th row from previous dec **11 (12-12-13-13-13)** times. **11 (11-12-14-16-17)** sts. Work 2 rows even.

**Shape shoulders:** Cast off **6 (6-6-7-8-9)** sts beg of next row. Work 1 row even. Cast off rem **5 (5-6-7-8-8)** sts.

**BACK**

With larger needles, cast on **97 (109-121-133-157-181)** sts.

**1st row:** (RS). (P3. K3) **8 (9-10-11-13-15)** times. P1. (K3. P3) **8 (9-10-11-13-15)** times.

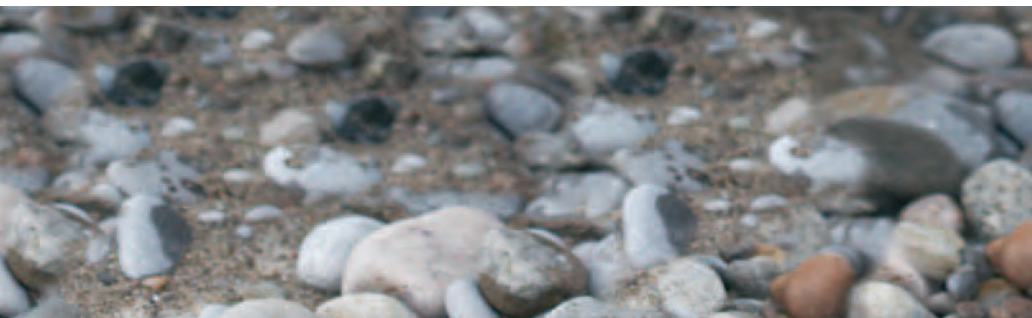
**2nd row:** (K3. P3) **8 (9-10-11-13-15)** times. K1. (P3. K3) **8 (9-10-11-13-15)** times.

Rep last 2 rows of ribbing until work from beg measures 4 ins [10 cm], ending with RS facing for next row.

**Sizes 2/3XL and 4/5XL only: Next row:** [P**(33-12)**. P2tog. P**(34-13)**] **(1-3)** time(s). K9. P1. K9. [P**(34-13)**. P2tog. P**(34-12)**] **(1-3)** time(s). **(155-175)** sts.

**Next row:** K**(68-78)**. P9. K1. P9. K**(68-78)**.

**All sizes:** Proceed in pat as follows:  
**1st row:** (RS). P**39 (45-51-57-68-78)**. Work 1st row of Panel Pat A. P1. Work 1st row of Panel Pat B. Purl to end of row.



**2nd row:** K39 (45-51-57-68-78). Work 2nd row of Panel Pat B. K1. Work 2nd row of Panel Pat A. Knit to end of row. Panel Pats A and B are now in position.

Cont even in pat until work from beg measures 6 ins [15 cm], ending with RS facing for next row.

**Shape sides: Next row:** P2. P2tog. Pat to last 4 sts. P2tog. P2.

Work 11 rows even.

Rep last 12 rows 4 times more. 87 (99-111-123-145-165) sts.

Cont even until work from beg measures 17 ins [43 cm], ending with RS facing for next row.

**Next row:** P2. M1P. Pat to last 2 sts. M1P. P2.

Work 11 (11-11-11-21-21) rows even.

**Sizes XS/S, M, L and XL only:** Rep last 12 rows once more.

**All sizes: Next row:** (RS). P2. M1P. Pat to last 2 sts. M1P. P2. 93 (105-117-129-149-169) sts.

Cont even until work from beg measures same length as Fronts to armhole shaping, ending with RS facing for next row.

**Shape armholes:** Cast off 5 (5-8-11-15-19) sts beg next 2 rows. 83 (95-101-107-119-131) sts.

**Next row:** (RS). P2. P2tog. Pat to last 4 sts. P2tog. P2.

**Next row:** K2. K2tog. Pat to last 4 sts. Sl1. K1. pss0. K2.

Dec 1 st each end of needle as before, on every row to 75 (83-85-91-95-97) sts, then every following alt row 5 (6-5-6-6-6) times. 65 (71-75-79-83-85) sts.

Cont even until armhole measures same length as fronts before shoulder shaping, ending with RS facing for next row.

**Shape back neck: Next row:** Cast off 6 (6-6-7-8-9) sts. Pat 5 (5-6-7-8-8) sts (including st after cast off). P2tog. **Turn.** Leave rem sts on a spare needle.



**Next row:** K2tog. Pat to end of row.  
Cast off rem **5 (5-6-7-8-8)** sts.

With RS of work facing, rejoin yarn to rem sts: cast off **39 (45-47-47-47-47)** sts. Pat to end of row.

**Next row:** (WS). Cast off **6 (6-6-7-8-9)** sts. Pat to last 2 sts. K2tog.

**Next row:** P2tog. Pat to end of row.  
Cast off rem **5 (5-6-7-8-8)** sts.

## FINISHING

Pin garment pieces to measurements. Cover with a damp cloth, leaving cloth to dry.

**Front and neck edge:** Sew shoulder seams. With RS of work facing and circular needle beg at bottom of right front, pick up and knit 89 sts to beg of V-neck shaping, **71 (77-77-79-79-79)** sts to shoulder, **43 (49-49-51-51-51)** sts across center back, **71 (77-77-79-79-79)** sts down to beg of V-neck shaping, 89 sts down left front edge to bottom edge. **363 (381-381-387-387-387)** sts.

**\*\*1st row:** (WS). P3. \*K3. P3. Rep from \* to end of row.

**2nd row:** K3. \*P3. K3. Rep from \* to end of row.

Rep last 2 rows of (K3. P3) ribbing once more, then 1st row once.\*\*

**Next row:** (RS). (Buttonhole row). Rib 49 sts. [Cast off 2 sts. Rib 10 sts (including st after cast off)] 3 times. Cast off 2 sts. Rib to end of row.

**Next row:** Work in ribbing, casting on 2 sts over cast off sts.

Work 5 rows more in (K3. P3) ribbing. Cast off in rib.

**Armhole bands:** With RS of work facing and circular needle beg at side edge, pick up and knit **87 (93-93-105-117-123)** sts.

Work 6 rows of (K3. P3) ribbing as given for Front and neck edge. Cast off in rib. Sew side seams.

## BELT

With smaller needles, cast on 11 sts.

**1st row:** (RS). K4. C6F. K1.

**2nd and alt rows:** K1. P9. K1.

**3rd row:** Knit.

**5th row:** K1. C6B. K4.


**7th row:** Knit.

**8th row:** As 2nd row.

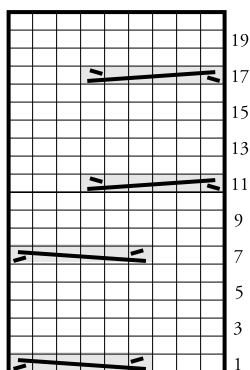
Rep last 8 rows until work from beg measures 60 ins [152.5 cm], ending with RS facing for next row. Cast off.

**Belt loops:** (Make 2).

With smaller needles, cast on 14 sts. Cast off.

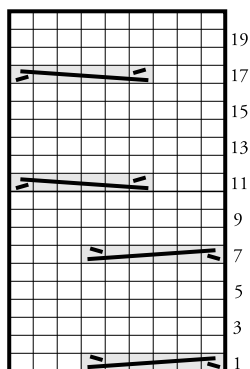
Try on Vest and mark position of Belt Loops at side seams. Sew on loops. 

## PANEL PAT A




Start Here

## PANEL PAT B



Start Here

## KEY

 = Knit on RS  
and purl on WS

 = C6F

 = C6B





$2\frac{1}{4} - 2\frac{1}{4} - 2\frac{1}{2}$

$2\frac{3}{4} - 3\frac{1}{4} - 3\frac{1}{2}$

