



KNIT | SKILL LEVEL: **INTERMEDIATE**

ABBREVIATIONS

Beg = Begin(ning)

C8B = Slip next

4 stitches onto cable
needle and leave at
back of work. K4, then

K4 from cable needle

C8F = Slip next

4 stitches onto cable
needle and leave at
front of work. K4, then

K4 from cable needle

Cont = Continue(ity)

Dec = Decrease(ing)

Inc = Increase(ing)

K = Knit

K2tog = Knit next

2 stitches together

K1tbl = Knit next stitch

through back of loop

MB (Make Bobble)

= [(K1. yo) twice.

K1] all in next stitch.

5 sts. Turn. P5. Turn.

K5. Turn. P2tog. P1.

P2togtbl. 3 sts. Turn.

Sl1. K2tog. pss0. 1 st

remains. Bobble

complete. Push

Bobble to RS of work

P = Purl

Pat = Pattern

P1tbl = Purl next

stitch through back of

loop

P2tog = Purl next

2 stitches together

Pat = Pattern

Pss0 = Pass slipped

stitch over

Rem = Remaining

Rep = Repeat

RS = Right side

Sl1 = Slip next stitch
knitwise

St(s) = Stitch(es)

Tog = Together

WS = Wrong side

Yo = Yarn over

MATERIALS

Patons® Classic Wool Worsted™ (3.5 oz/100 g; 210 yds/192 m)

Sizes XS/S M L XL 2/3XL 4/5XL

Natural Mix (00229) 7 8 9 10 12 14 balls

Sizes U.S. 6 (4 mm) and U.S. 7 (4.5 mm) knitting needles **or size needed to obtain gauge.** Cable needle. Stitch markers. 2 stitch holders. Spare knitting needle size U.S. 7 (4.5 mm).

SIZES

To fit bust measurement

XS/S 28-34" [71-86.5 cm]

M 36-38" [91.5-96.5 cm]

L 40-42" [101.5-106.5 cm]

XL 44-46" [112-117 cm]

2/3XL 48-54" [122-137 cm]

4/5XL 56-62" [142-157.5 cm]

Finished bust

XS/S 43" [109 cm]

M 46" [117 cm]

L 48" [122 cm]

XL 52" [132 cm]

2/3XL 58" [147.5 cm]

4/5XL 64" [162.5 cm]



Gayle Bunn
Designer

GAUGE

20 sts and 26 rows = 4" [10 cm] in stocking st with larger needles.

INSTRUCTIONS

The instructions are written for smallest size. If changes are necessary for larger size(s) the instructions will be written thus (.). Numbers for each size are shown in the same color throughout the pattern. When only one number is given in black, it applies to all sizes.

CABLE PANEL (worked over 20 sts)
See chart on page 4.

1st row: (RS). P2. K4. P3. K2. P3. K4. P2.

2nd row: K2. P4. K3. P2. K3. P4. K2.

3rd to 8th rows: Rep 1st and 2nd rows twice more.

9th row: P2. C8F. C8B. P2.

10th row: K2. P16. K2.

These 10 rows form Cable Panel.

FLANGES (make 2)

With smaller needles, cast on **121 (127-133-143-159-173)** sts.

1st row: (RS). *K1tbl. P1. Rep from * to last st. K1tbl.

2nd row: *P1tbl. K1. Rep from * to last st. P1tbl.

Rep last 2 rows twisted rib for 2" [5 cm], ending on a 2nd row. Leave sts on st holder.

BACK

With smaller needles, cast on **109 (115-121-131-147-161) sts.

1st row: (RS). *K1tbl. P1. Rep from * to last st. K1tbl.

2nd row: *P1tbl. K1. Rep from * to last st. P1tbl.

Rep last 2 rows twisted rib for 3¼" [8.5 cm], ending on a 2nd row.

Change to larger needles and proceed in stocking st until work from beg measures 17" [43 cm], ending on a purl row and inc 12 sts evenly across last row. **121 (127-133-143-159-173)** sts.

Join Flange: 1st row: Place WS of Flange against RS of Back (Flange is on top of work). Working into sts of both pieces at same time (using 3rd larger needle), knit across all sts. **121 (127-133-143-159-173)** sts

2nd row: (WS). Knit.

Proceed in Bodice Pat as follows:

1st row: (RS). **K16 (19-20-25-31-38)**. Work 1st row of Cable Panel across next 20 sts. **K49 (49-53-53-57-57)**. Work 1st row of Cable Panel across next 20 sts. **K16 (19-20-25-31-38)**.

2nd row: **P16 (19-20-25-31-38)**. Work 2nd row of Cable Panel across next 20 sts. **P49 (49-53-53-57-57)**. Work 2nd row of Cable Panel across next 20 sts. **P16 (19-20-25-31-38)**.

3rd row: **K1 (4-1-2-4-3)**. (MB. K3) **3 (3-4-5-6-8)** times. MB. K2. Work 3rd row of Cable Panel across next 20 sts. K2. (MB. K3) **11 (11-12-12-13-13)** times. MB. K2. Work 3rd row of Cable Panel across next 20 sts. K2. (MB. K3) **3 (3-4-5-6-8)** times. MB. **K1 (4-1-2-4-3)**.

4th row: **P16 (19-20-25-31-38)**. Work 4th row of Cable Panel across next 20 sts. **P49 (49-53-53-57-57)**. Work 4th row of Cable Panel across next 20 sts. **P16 (19-20-25-31-38)**.

5th row: **K16 (19-20-25-31-38)**. Work 5th row of Cable Panel across next 20 sts. **K49 (49-53-53-57-57)**. Work 5th row of Cable Panel across next 20 sts. **K16 (19-20-25-31-38)**.

6th row: **P16 (19-20-25-31-38)**. Work 6th row of Cable Panel across next 20 sts. **P49 (49-53-53-57-57)**. Work 6th row of Cable Panel across next 20 sts. **P16 (19-20-25-31-38)**.

7th row: **K3 (2-3-4-2-5)**. (MB. K3) **2 (3-3-4-5-7)** times. MB. K4. Work 7th row of Cable Panel across next 20 sts. K4. (MB. K3) **10 (10-11-11-12-12)** times. MB. K4. Work 7th row of Cable Panel across next 20 sts. K4. (MB. K3) **2 (3-3-4-6-7)** times. MB. **K3 (2-3-4-2-5)**.

8th row: **P16 (19-20-25-31-38)**. Work 8th row of Cable Panel across next 20 sts. **P49 (49-53-53-57-57)**. Work 8th row of Cable Panel across next 20 sts. **P16 (19-20-25-31-38)**.

Rep last 8 rows for Bobble Pat. Cable Panel pats are now in position.**

Cont in pat until work from joining row measures **10½ (10½-10½-11-11-12)" [26.5 (26.5-26.5-28-28-30.5) cm]**, ending on a WS row.

Shape shoulders and back neck:

1st row: (RS). Cast off **9 (10-11-12-14-15)** sts. Pat across **34 (36-37-41-46-52)** sts (including st on needle after cast off) (neck edge). **Turn.** Leave rem sts on a st holder. **2nd row:** P2tog. Pat to end of row. **3rd row:** Cast off **9 (10-11-12-14-15)** sts. Pat to last 2 sts. K2tog.



4th and 5th rows: As 2nd and 3rd rows.

6th row: P2tog. Pat to end of row. Cast off rem **11** (11-10-12-13-17) sts.

With RS facing, slip next **35** (35-37-37-39-39) sts onto st holder.

1st row: Join yarn to rem sts and pat to end of row.

2nd row: (WS). Cast off **9** (10-11-12-14-15) sts. Pat to last 2 sts. P2tog.

3rd row: K2tog. Pat to end of row.

4th and 5th rows: As 2nd and 3rd rows.

6th row: As 2nd row.

7th row: Work even in pat. Cast off rem **11** (11-10-12-13-17) sts.

FRONT

Work from ** to ** as given for Back. Cont in pat until work from joining row measures **8½** (8½-8½-9-9-10)" [**21.5** (21.5-21.5-23-23-25.5) cm], ending on a WS row.

Shape neck: 1st row: (RS). Pat across **47** (50-52-57-64-71) sts (neck edge). **Turn.** Leave rem sts on a st holder.

Keeping cont of pat, dec 1 st at neck edge on next 4 rows, then on RS rows only 4 times more. **39** (42-44-49-56-63) sts.

Next row: Work even in pat.

Shape shoulder: Next row: (RS). Cast off **9** (10-11-12-14-15) sts. Pat to last 2 sts. K2tog.

Next row: Work even in pat.

Next row: Cast off **9** (10-11-12-14-15) sts. Pat to end of row.

Rep last 2 rows once more.

Next row: Work even in pat. Cast off rem **11** (11-10-12-13-17) sts.

With RS facing, slip next **27** (27-29-29-31-31) sts onto st holder.

Rejoin yarn to rem sts and pat to end of row.

Keeping cont of pat, dec 1 st at neck edge on next 4 rows, then on RS rows only 4 times more. **39** (42-44-49-56-63) sts.

Next row: (WS). Work even in pat.

Next row: K2tog. Pat to end of row.

Shape shoulder: Next row: (WS). Cast off **9** (10-11-12-14-15) sts. Pat to end of row.

Next row: Work even in pat. Rep last 2 rows twice more. Cast off rem **11** (11-10-12-13-17) sts.

SLEEVE

With smaller needles, cast on **45** (45-47-47-51-53) sts.

1st row: (RS). *K1tbl. P1. Rep from * to last st. K1tbl.

2nd row: *P1tbl. K1. Rep from * to last st. P1tbl.

Rep last 2 rows twisted rib for 2¼" [5.5 cm], ending on a 2nd row and inc **3** (3-5-9-9-11) sts evenly across last row. **48** (48-52-56-60-64) sts.

Change to larger needles and work 4 rows in stocking st.

Inc 1 st each end of next and following **4th** (4th-4th-4th-2nd-2nd) rows until there are **70** (82-92-96-68-72) sts.

Sizes XS/S, M, 2/3XL and 5/XL only: Inc 1 st each end of following **6th** (6th-4th-4th) rows until there are **84** (88-100-104) sts.

All sizes: Cont even until Sleeve from beg measures **17½** (17-16½-16½-16-16)" [**44.5** (43-42-42-40.5-40.5) cm], ending on a purl row. Cast off.

FINISHING

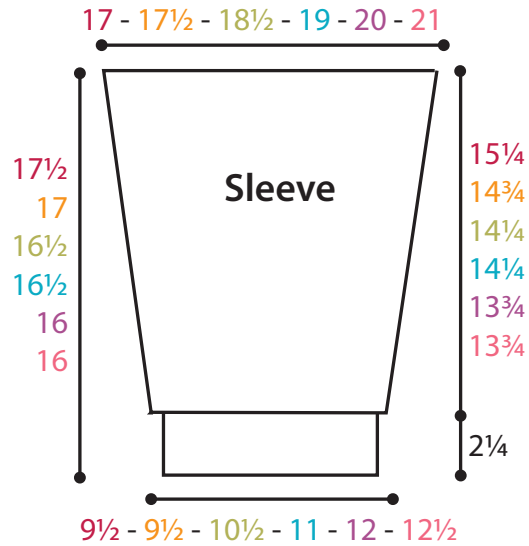
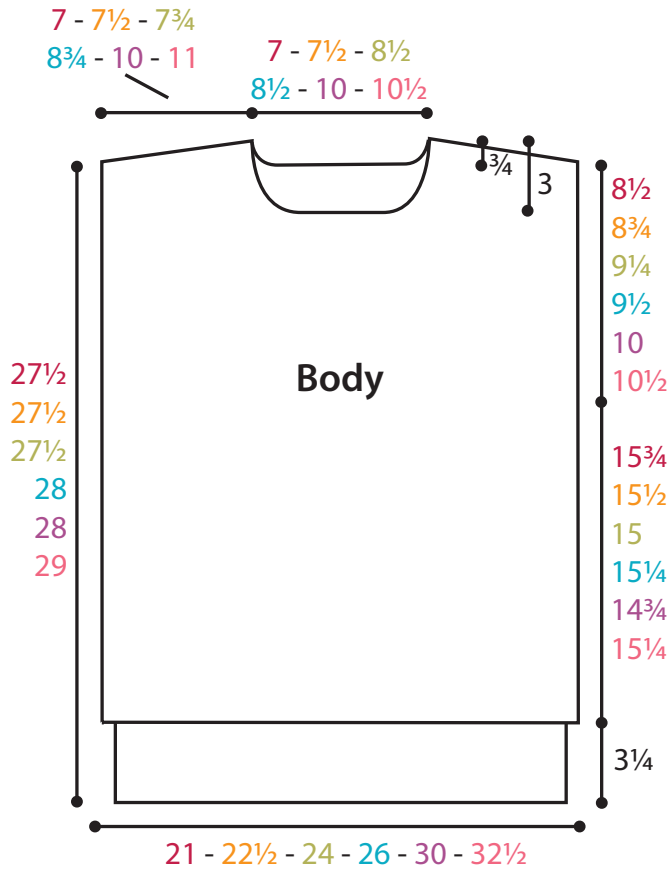
Pin all pieces to measurements. Cover with a damp cloth and leave cloth to dry.

Collar: Sew right shoulder seam. With RS facing and smaller needles, pick up and knit 22 sts down left front neck edge. **K27** (27-29-29-31-31) from Front st holder, dec 2 sts evenly across. Pick up and knit 22 sts up right front neck edge and 7 sts down right back neck edge. **K35** (35-37-37-39-39) from Back st holder, dec 3 sts evenly across. Pick up and knit 7 sts up left back neck edge. **115** (115-119-119-123-123) sts.

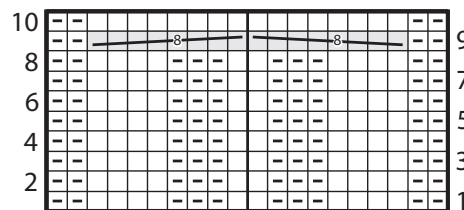
Beg on a 2nd row, work 5" [12.5 cm] in twisted rib as given for Back, ending on a WS row. Cast off in ribbing.

Sew left shoulder and Collar seam.

Place markers on side edges of Front and Back **8½** (8¾-9¼-9½-10-10½)" [**21.5** (22-23.5-24-25.5-26.5) cm] down from shoulders. Sew in sleeves between markers. Sew side and sleeve seams. Sew sides of Flanges tog at side seams.



Cable Panel



Start Here

Key

- ☐ = Knit on RS rows. Purl on WS rows
- ◻ = Purl on RS rows. Knit on WS rows

