



Gayle Bunn
Designer

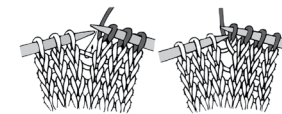


KNIT | SKILL LEVEL: INTERMEDIATE

ABBREVIATIONS

Alt = Alternate
Approx = Approximately
Beg = Beginning
C4F = Slip next 2 stitches onto a cable needle and leave at front of work. K2, then K2 from cable needle.
C4B = Slip next 2 stitches onto a cable needle and leave at back of work. K2, then K2 from cable needle.
C6F = Slip next 3 stitches onto a cable needle and leave at front of work. K3, then K3 from cable needle.
C6B = Slip next 3 stitches onto a cable needle and leave at back of work. K3, then K3 from cable needle.

Cont = Continue(ity)
Dec = Decrease(ing)
Inc = Increase(ing)
K = Knit
M1 = Make 1 stitch by picking up horizontal loop lying before next stitch and knitting into back of loop.



P = Purl
Pat = Pattern
Rem = Remaining
Rep = Repeat
RS = Right side
St(s) = Stitch(es)
T3F = Slip next 2 stitches onto a cable needle and leave at front of work. P1, then K2 from cable needle.

T3B = Slip next stitch onto a cable needle and leave at back of work. K2, then P1 from cable needle.
Tw4R = Slip next 2 stitches onto a cable needle and leave at back of work. K2, then (P1. K1) from cable needle.
Tw4L = Slip next 2 stitches onto a cable needle and leave at front of work. (K1. P1), then K2 from cable needle.
WS = Wrong side

MATERIALS

Patons® Classic Wool Worsted™ (3.5 oz/100 g; 194 yds/177 m)

Sizes	XS/S	M	L	
Blue Fog (77770)	8	9	10	balls
	1400/1274	1620/1474	1880/1710	yds/m
Sizes	XL	2/3XL	4/5XL	
Blue Fog (77770)	11	13	15	balls
	2050/1866	2400/2184	2780/2530	yds/m

Sizes U.S. 6 (4 mm) and U.S. 7 (4.5 mm) Susan Bates® Silvalume® knitting needles **or size needed to obtain gauge.** 2 Susan Bates® stitch holders. Susan Bates® cable needle. Susan Bates® yarn needle.

SIZES

To fit chest measurement

XS/S	28-34" [71-86.5 cm]
M	36-38" [91.5-96.5 cm]
L	40-42" [101.5-106.5 cm]
XL	44-46" [112-117 cm]
2/3XL	48-54" [122-137 cm]
4/5XL	56-62" [142-157.5 cm]

Finished chest

XS/S	41" [96.5 cm]
M	44" [101.5 cm]
L	47" [119.5 cm]
XL	50" [127 cm]
2/3XL	58" [147.5 cm]
4/5XL	62" [157.5 cm]

GAUGE

20 sts and 26 rows = 4" [10 cm] in stocking st with larger needles.

INSTRUCTIONS

The instructions are written for **XS/S** size. If changes are necessary for larger sizes the instructions will be written **XS/S (M-L-XL-2/3XL-4/5XL)**. Numbers for each size are shown in the same color throughout the pattern. When only one number is given in black, it applies to all sizes.

Panel Pat A (worked over 24 sts)

See chart on page 4.

1st row: (RS). P1. (T3F. T3B. P2) twice. T3F. T3B. P1.

2nd row: K2. (P4. K4) twice. P4. K2.

3rd row: P2. (C4F. P4) twice. C4F. P2.

4th row: As 2nd row.

5th row: P1. (T3B. T3F. P2) twice. T3B. T3F. P1.

6th row: K1. (P2. K2) 5 times. P2. K1.

7th to 12th rows: As 1st to 6th rows.

13th row: (T3B. P2. T3F) 3 times.

14th row: P2. (K4. P4) twice. K4. P2.

15th row: K2. (P4. C4B) twice. P4. K2.

16th row: As 14th row.

17th row: K2. P3. (T3B. T3F. P2) twice. P1. K2.

18th row: P2. K3. (P2. K2) 4 times. K1. P2.

19th row: K2. P3. (T3F. T3B. P2) twice. P1. K2.

20th row: As 14th row.

21st row: As 15th row.

22nd row: As 14th row.

23rd row: (T3F. P2. T3B) 3 times.

24th row: As 6th row.

These 24 rows form Panel Pat A.

Panel Pat B (worked over 17 sts).

See chart on page 4.

1st row: (RS). P4. Tw4R. P1. Tw4L. P4.

2nd row: K4. P2. (K1. P1) twice. K1. P2. K4.

3rd row: P3. T3B. (K1. P1) twice. K1. T3F. P3.

4th row: K3. P2. (K1. P1) 3 times. K1. P2. K3.

5th row: P2. T3B. (K1. P1) 3 times. K1. T3F. P2.

6th row: K2. P2. (K1. P1) 4 times. K1. P2. K2.

7th row: P1. T3B. (K1. P1) 4 times. K1. T3F. P1.

8th row: K1. P2. (K1. P1) 5 times. K1. P2. K1.

9th row: T3B. (K1. P1) 5 times. K1. T3F.

10th row: P2. (K1. P1) 6 times. K1. P2.

11th row: T3F. (P1. K1) 5 times. P1. T3B.

12th row: As 8th row.

13th row: P1. T3F. (P1. K1) 4 times. P1. T3B. P1.

14th row: As 6th row.

15th row: P2. T3F. (P1. K1) 3 times. P1. T3B. P2.

16th row: As 4th row.

17th row: P3. T3F. (P1. K1) twice. P1. T3B. P3.

18th row: As 2nd row.

19th row: P4. C4F. P1. C4B. P4.

20th row: K4. P4. K1. P4. K4.

21st row: P4. C4B. P1. C4F. P4.

22nd row: As 20th row.

23rd row: P4. K4. P1. K4. P4.

24th to 27th rows: Rep last 4 rows once more.

28th row: As 20th row.

These 28 rows form Panel Pat B.

Panel Pat C (worked over 9 sts)

See chart on page 4.

1st row: (RS). Knit.

2nd and every alt row: Purl.

3rd row: C6F. K3.

5th and 7th rows: Knit.

9th row: K3. C6B.

11th row: Knit.

12th row: Purl.

These 12 rows form Panel Pat C.

BACK

With smaller needles, cast on **130 (138-146-154-174-186) sts.

1st row: (RS). K2. *P2. K2. Rep from * to end of row.

2nd row: P2. *K2. P2. Rep from * to end of row.

Rep last 2 rows for 2" [5 cm], ending on a 1st row.

Next row (inc row): (WS). *Rib across **8 (8-7-7-8-9)** sts. M1. Rep from * **13 (15-17-19-19-17)** times more. Rib to end of row. **144 (154-164-174-194-204)** sts.

Change to larger needles and proceed as follows:

1st row: (RS). K2. (P2. K3) **0 (1-2-3-5-6)** time(s). P2. *Work 1st row of Panel Pat C. P2. K3. P2. Work 1st row of Panel Pat B. P2. K3. P2. Work 1st row of Panel Pat C. P2.* K3. P2. Work 1st row of Panel Pat A. P2. K3. P2. Rep from * to * once more. (K3. P2) **0 (1-2-3-5-6)** time(s). K2.

2nd row: P2. (K2. P3) **0 (1-2-3-5-6)** time(s). K2. *Work 2nd row of Panel Pat C. K2. P3. K2. Work 2nd row of Panel Pat B. K2. P3. K2. Work 2nd row of Panel Pat C. K2.* P3. K2. Work 2nd row of Panel Pat A. K2. P3. K2. Rep from * to * once more. (P3. K2) **0 (1-2-3-5-6)** time(s). P2. Panel Pats are now in position.

Cont in pat, keeping cont of Panel Pats and (K3. P2) ribbing at side edges as placed in last 2 rows, until work from beg measures 15½" [39.5 cm], ending on a WS row.

Armhole shaping: Keeping cont of pat, cast off **4 (7-7-9-14-14)** sts beg next 2 rows. **136 (140-150-156-166-176)** sts.**

Cont even in pat until armholes measure **9½ (10-10½-10½-11-11)" [24 (25.5-26.5-26.5-28-28)** cm], ending on a WS row.

Shoulder shaping: Cast off **15 (15-17-18-19-20)** sts beg next 4 rows, then **16 (16-17-17-18-21)** sts beg following 2 rows. Leave rem **44 (46-48-50-54-54)** sts on a st holder.

FRONT

Work from ** to ** as given for Back. Cont even in pat until armholes measure **6 (6½-7-7-7½-7½)" [15 (16.5-18-18-19-19)** cm], ending on a WS row.

Left Neck shaping: Next row: (RS). Pat across **55 (56-60-62-65-70)** sts (neck edge). **Turn.** Leave rem sts on a spare needle.

Dec 1 st at neck edge on next 9 rows. **46 (47-51-53-56-61)** sts.

Cont even in pat until left armhole measures same length as Back to beg of shoulder shaping, ending on a WS row.

Shoulder shaping: Cast off **15 (15-17-18-19-20)** sts beg next and following alt row. Work 1 row even. Cast off rem **16 (16-17-17-18-21)** sts.

Right Neck shaping: With RS facing slip next **26 (28-30-32-36-36)** sts from spare needle onto a st holder. Join yarn to rem sts and pat to end of row.

Dec 1 st at neck edge on next 9 rows. **46 (47-51-53-56-61)** sts.

Cont even in pat until right armhole measures same length as Back to beg of shoulder shaping, ending on a RS row.

Shoulder shaping: Cast off **15 (15-17-18-19-20)** sts beg next and following alt row. Work 1 row even. Cast off rem **16 (16-17-17-18-21)** sts.

SLEEVES

With smaller needles cast on **58 (58-62-62-66-66)** sts.

Work 2" [5 cm] in (K2. P2) ribbing as given for Back ending on a 1st row.

Next row (inc row): (WS). *Rib across **2 (2-3-3-4-4)** sts. M1. Rep from * **22 (22-18-18-14-14)** times more. Rib to end of row. 81 sts.

Change to larger needles and proceed as follows:

1st row: (RS). P2. (K3. P2) twice. Work 1st row of Panel Pat B. P2. K3. P2. Work 1st row of Panel Pat C. P2. K3. P2. Work 1st row of Panel Pat B. (P2. K3) twice. P2.

2nd row: K2. (P3. K2) twice. Work 2nd row of Panel Pat B. K2. P3. K2. Work 2nd row of Panel Pat C. K2. P3. K2. Work 2nd row of Panel Pat B. (K2. P3) twice. K2. Panel Pats are now in position.

Cont in pat, keeping cont of Panel Pats and (K3. P2) ribbing at side edges as placed in last 2 rows, inc 1 st each end of needle on next and every RS row to **89 (103-103-107-119-119)** sts, then every following 4th row until there are **133 (137-143-143-147-147)** sts, taking inc sts into (K3. P2) ribbing at sides.

Cont even in pat until Sleeve from beg measures **18½ (19-20-20-19-19)" [47 (48-51-51-48-48) cm]**, ending on a WS row. Cast off. Place markers on side edges of Sleeves **¾ (1-1-1½-2-2)" [2 (2.5-2.5-3-5-5) cm]** down from cast off edge.

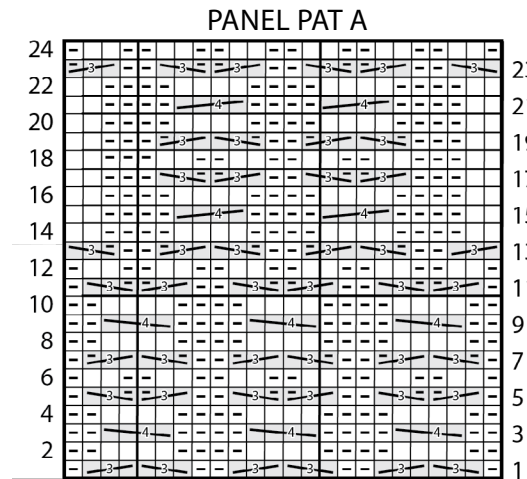
FINISHING

Pin all garment pieces to measurements and cover with a damp cloth, leaving cloth to dry.

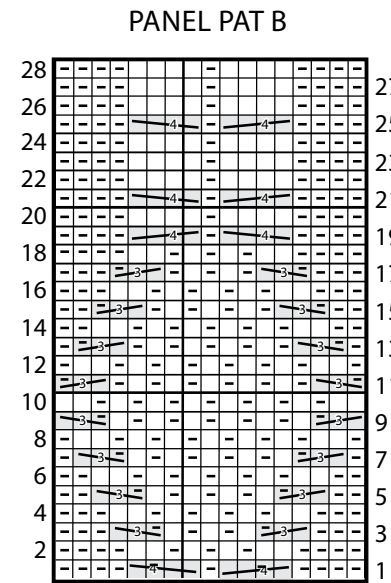
Neckband: Sew right shoulder seam. With RS facing and smaller needles, pick up and knit 22 sts down left front neck edge. **K26 (28-30-32-36-36)** from front st holder, dec 3 sts evenly across. Pick up and knit 22 sts up right front neck edge. **K44 (46-48-50-54-54)** from back st holder, dec 5 sts evenly across. **106 (110-114-118-126-126)** sts.

Beg and ending on a 2nd row work 3½" [9 cm] in (K2. P2) ribbing as given for Back. Cast off loosely in ribbing. Sew left shoulder and neckband seam. Fold neckband in half to WS and sew loosely in position.

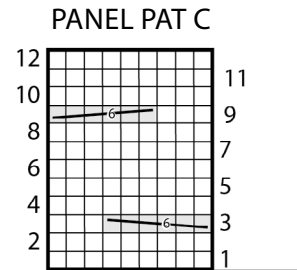
Sew in sleeves placing rows above markers along cast off sts at armholes to form square armholes. Sew side and Sleeve seams.



Start Here



Start Here



Start Here

Key

- = Knit on RS rows. Purl on WS rows
- ▣ = Purl on RS rows. Knit on WS rows

