



Katherine Poole-Fournier  
Designer



KNIT | SKILL LEVEL: INTERMEDIATE

## ABBREVIATIONS

**Alt** = Alternate(ing)  
**Approx** = Approximately  
**Beg** = Beginning  
**Cont** = Continue  
**K** = Knit  
**K2tog** = Knit next 2 stitches together  
**P** = Purl  
**P2tog** = Purl next 2 stitches together

**P2togtbl** = Purl next 2 stitches together through back loops.  
**PM** = Place marker  
**Rem** = Remain(ing)  
**Rep** = Repeat  
**Rnd(s)** = Round(s)  
**RS** = Right side  
**Sl1** = Slip next stitch knitwise  
**SM** = Slip marker

**Ssk** = Slip next 2 stitches knitwise one at a time. Pass them back onto left-hand needle, then knit through back loops together  
**St(s)** = Stitch(es)  
**WS** = Wrong side  
**Yo** = Yarn over

## MATERIALS

Patons® Linen™ (3.5 oz/100 g; 275 yds/251 m)

Sizes	XS/S	M	L	XL	2/3XL	4/5XL	
Cedar (14003)	5	6	7	8	9	10	<b>balls</b>

Sizes U.S. 4 [3.5 mm] and U.S. 6 [4 mm] Susan Bates® Silvalume® circular knitting needles 16" [40.5 cm] and 24" [60 cm] long. Set of 4 size U.S. 4 [3.5 mm] double-pointed Susan Bates® Silvalume® knitting needles **or size needed to obtain gauge**. Susan Bates® yarn needle. Susan Bates® stitch markers. Waste yarn or stitch holders. Safety pin.

## SIZES

### To fit chest measurement

<b>XS/S</b>	<b>28-34" [71-86.5 cm]</b>
<b>M</b>	<b>36-38" [91.5-96.5 cm]</b>
<b>L</b>	<b>40-42" [101.5-106.5 cm]</b>
<b>XL</b>	<b>44-46" [112-117 cm]</b>
<b>2/3XL</b>	<b>48-54" [122-137 cm]</b>
<b>4/5XL</b>	<b>56-62" [142-157.5 cm]</b>

### Finished chest measurement

<b>XS/S</b>	<b>37" [94 cm]</b>
<b>M</b>	<b>39" [99 cm]</b>
<b>L</b>	<b>43" [109 cm]</b>
<b>XL</b>	<b>47" [119.5 cm]</b>
<b>2/3XL</b>	<b>54" [137 cm]</b>
<b>4/5XL</b>	<b>60" [152.5 cm]</b>

## GAUGE

24 sts and 32 rows = 4" [10 cm] in stocking st with larger needles.

## INSTRUCTIONS

*The instructions are written for smallest size. If changes are necessary for larger sizes the instructions will be written thus ( ). When only one number is given, it applies to all sizes.*

**Note:** Body is worked in one piece.

## BODY

With smaller 24" [60 cm] circular needle, cast on 144 sts. Join in rnd. PM for beg of rnd.

**1st to 8th rnds:** \*K1. P1. Rep from \* around.

Change to larger circular needle and proceed in Lace Pat as follows:  
**1st rnd:** \*K1. yo. K35. yo. PM. Rep from \* around. 152 sts.

**2nd rnd:** [P1. K1. \*yo. ssk. K1. K2tog. yo. K1. Rep from \* to next marker. SM] 4 times.

**3rd and alt rnds:** \*K1. yo. Knit to next marker. yo. SM. Rep from \* around.

**4th rnd:** [P1. K2. \*yo. K1. Sl1. K2tog. pssso. K1. yo. K1. Rep from \* to 1 st before marker. K1. SM] 4 times. 160 sts.

**6th rnd:** [P1. yo. K2tog. K1. \*ssk. yo. K1. yo. K2tog. K1. Rep from \* to 2 sts before marker. ssk. yo. SM] 4 times. 168 sts.

**8th rnd:** [P1. K1. yo. K1. Sl1. K2tog. pssso. \*(K1. yo) twice. K1. Sl1. K2tog. pssso. Rep from \* to 2 sts before marker. K1. yo. K1. SM] 4 times. 176 sts.

**10th rnd:** [P1. K2. K2tog. yo. K1. \*yo. ssk. K1. K2tog. yo. K1. Rep from \* to 4 sts before marker. yo. ssk. K2. SM] 4 times. 184 sts.

**12th rnd:** [P1. \*yo. K1. Sl1. K2tog. pssso. K1. yo. K1. Rep from \* to 5 sts before marker. yo. K1. Sl1. K2tog. pssso. K1. yo. SM] 4 times. 192 sts.

**14th rnd:** [P1. K1. \*ssk. yo. K1. yo. K2tog. K1. Rep from \* to marker. SM] 4 times. 200 sts.

**16th rnd:** [P1. K1. K2tog. \*(K1. yo) twice. K1. Sl1. K2tog. pssso. Rep from \* to 6 sts before marker. (K1. yo) twice. K1. ssk. K1. SM] 4 times. 208 sts.

**18th rnd:** [P1. K2tog. yo. K1. \*yo. ssk. K1. K2tog. yo. K1. Rep from \* to 2 sts before marker. yo. ssk. SM] 4 times. 216 sts.

**20th rnd:** [P1. K1. K2tog. yo. K1. \*yo. K1. Sl1. K2tog. pssso. K1. yo. K1. Rep from \* to 3 sts before marker. yo. ssk. K1. SM] 4 times. 224 sts.

**22nd rnd:** [P1. K2. yo. K2tog. K1. \*ssk. yo. K1. yo. K2tog. K1. Rep from \* to 4 sts before marker. ssk. yo. K2. SM] 4 times. 232 sts.

**24th rnd:** [P1. K2tog. \*(yo. K1) twice. Sl1. K2tog. pssso. K1. Rep from \* to 3 sts before marker. yo. K1. yo. ssk. SM] 4 times. 240 sts.

**26th rnd:** As 2nd rnd. 248 sts.

**28th rnd:** As 4th rnd. 256 sts.

**30th rnd:** As 6th rnd. 264 sts.

**32nd rnd:** As 8th rnd. 272 sts.

**34th rnd:** As 10th rnd. 280 sts.

**36th rnd:** As 12th rnd. 288 sts.

**38th rnd:** As 14th rnd. 296 sts.

**40th rnd:** As 16th rnd. 304 sts.

**41st rnd:** \*K1. yo. K37. M1. K38. yo. SM. Rep from \* around. 316 sts.

**42nd rnd:** \*P1. Knit to next marker. SM. Rep from \* around.

**43rd rnd:** \*K1. yo. Knit to next marker. yo. SM. Rep from \* around. Rep last 2 rnds until there are **524 (580-636-684-732-836)** sts. [**130 (144-158-170-182-196)** sts between center sts].

## Divide for Body and Sleeves

**Next rnd:** [P1. **K78 (84-92-100-108-122)**. Slip next **105 (121-133-141-149-149)** sts on to scrap yarn, keeping marker in place. Cast on **4 (6-6-8-8-10)** sts, placing a marker between 2 center sts (side seam). Knit to marker. SM] twice. **322 (350-382-418-450-510)** sts for Body.

**Note:** Beg of rnd is now at Center Back.

Proceed with Body as follows:

**1st rnd:** (K1. yo. Knit to 2 sts before marker. K2tog. SM. ssk. Knit to next marker. yo) twice.

**2nd rnd:** \*P1. Knit to next marker. SM. Knit to next marker. SM. Rep from \* around.

Rep these 2 rnds until work from beg at neck measures approx **18 (19-20-20-20-21)" [45.5 (48-51-51-51-53.5)** cm] along center Back (following V-line), ending on a 2nd rnd.

**Note:** Side shaping is worked in rows. Right Side is shaped first, then Left Side.

**Shape Right Side: 1st row:** (RS). K1. Slip last worked st onto a safety pin. ssk. Knit to 2 sts before side marker. K2tog. SM. ssk. Knit to 2 sts before marker. K2tog. **Turn.** Leave rem sts on a spare needle. **156 (170-186-204-220-250).**

**2nd row:** P2tog. Purl to 2 sts before marker. P2togtbl. SM. P2tog. Purl to last 2 sts. P2togtbl.

**3rd row:** ssk. Knit to 2 sts before marker. K2tog. SM. ssk. Knit to last 2 sts. K2tog.

**4th row:** Sl1. Purl to end of row.

**5th row:** As 3rd row. **144 (158-174-192-208-238)** sts.

Rep 2nd to 5th rows until **12 (14-6-12-16-10)** sts rem, ending on a 5th row.

**Size XS/S and XL only: 1st row:** (WS). (P2tog. P2. P2togtbl) twice. 8 sts.

**2nd row:** (ssk. K2tog) twice. 4 sts.

**3rd row:** Sl1. P3.

**4th row:** (K2tog) twice. 2 sts.

**5th row:** P2tog. Fasten off.

**Sizes M only: 1st row:** (WS). P2tog. Purl to 2 sts before marker. P2togtbl. Sm. P2tog. Purl to last 2 sts P2togtbl. 10 sts.

**2nd row:** (ssk. K1. K2tog) twice. 6 sts.

**3rd row:** Sl1. P5.

**4th row:** ssk. (K2tog) twice. 3 sts.

**5th row:** P3tog. Fasten off.

**Sizes L only:**

**1st row:** (WS). (P3tog) twice. 2 sts.

**2nd row:** K2tog. Fasten off.

**Size 2/3XL only: 1st row:** (WS). (P2tog. P4. P2togtbl) twice. 12 sts.

**2nd row:** (ssk. K2. K2tog) twice. 8 sts.

**3rd row:** Sl1. P7.

**4th row:** (K2tog) 4 times. 4 sts.

**5th row:** Sl1. K3tog. pssso. Fasten off.

**Size 4/5XL only: 1st row:** (WS). (P2tog. P1. P2togtbl) twice. 6 sts.

**2nd row:** (Sl1. K2tog. pssso) twice. 2 sts.

**3rd row:** P2tog. Fasten off.

**All sizes:** Rep shaping for Left Side.

## SLEEVES

Slip **105 (121-133-141-149-149)** sts from scrap yarn onto larger 16" [40.5 cm] circular needle, maintaining placement of st marker. Pick up and knit **4 (6-6-8-8-10)** sts, PM between 2 center sts (beg of rnd - underarm seam). **109 (127-139-149-157-159)** sts.

**1st rnd:** K2tog. Knit to 2 sts before outer marker. yo. SM. K1. yo. Knit to last 2 sts. ssk.

**2nd rnd:** Knit to outer marker. SM. P1. Knit to end of rnd.

Rep these 2 rnds for 1" [2.5 cm] along center of Sleeve (following V-line), ending on a 1st rnd.

**Foundation row:** (RS). Knit to outer marker. K1. Slip last worked st onto a safety pin. Turn. Proceed in rows as follows:

**1st row:** (WS). Sl1. Purl to 2 sts before underarm marker. P2togtbl. SM. P2tog. Purl to end of row. **106 (124-136-146-154-156)** sts.

**2nd row:** ssk. Knit to 2 sts before marker. K2tog. SM. ssk. Knit to last 2 sts. K2tog.

**3rd row:** P2tog. Purl to 2 sts before underarm marker. P2togtbl. SM. P2tog. Purl to last 2 sts. P2togtbl.

**4th row:** As 2nd row.

Rep 1st to 4th rows until **8 (12-10-6-14-16)** sts rem, ending on a 4th row.

**Size XS/S only: 1st row:** (WS). Sl1. P1. P2togtbl. Sm. P2tog. Purl to end of row. 6 sts.

**2nd row:** (ssk. K2tog. pssso) twice. 2 sts.

**3rd row:** P2tog. Fasten off.

**Size M only: 1st row:** (WS). Sl1. P3. P2togtbl. Sm. P2tog. Purl to end of row. 10 sts.

**2nd row:** (ssk. K1. K2tog) twice. 6 sts.

**3rd row:** (P3tog) twice. 2 sts.

**4th row:** K2tog. Fasten off.

**Size L only: 1st row:** (WS). Sl1. P2. P2togtbl. Sm. P2tog. Purl to end of row. 8 sts.

**2nd row:** (ssk. K2tog) twice. 4 sts.

**3rd row:** (P2tog) twice. 2 sts.

**4th row:** K2tog. Fasten off.

**Sizes XL only: 1st row:** (WS). Sl1. P2togtbl. Sm. P2tog. Purl to end of row. 4 sts.

**2nd row:** ssk. K2tog. 2 sts.

**3rd row:** P2tog. Fasten off.

**Size 2/3XL only: 1st row:** (WS). S11. P4. P2togtbl. Sm. P2tog. Purl to end of row. 12 sts.

**2nd row:** (ssk. K2. K2tog) twice. 8 sts.

**3rd row:** (P2tog. P2togtbl) twice. 4 sts.

**4th row:** ssk. K2. K2tog. 2 sts.

**5th row:** P2tog. Fasten off.

**Size 4/5XL only: 1st row:** (WS). S11. P5. P2togtbl. Sm. P2tog. Purl to end of row. 14 sts.

**2nd row:** (ssk. K3. K2tog) twice. 10 sts.

**3rd row:** (P2tog. P1. P2togtbl) twice. 6 sts.

**4th row:** (S11. K2tog. pss) twice. 2 sts.

**5th row:** P2tog. Fasten off.

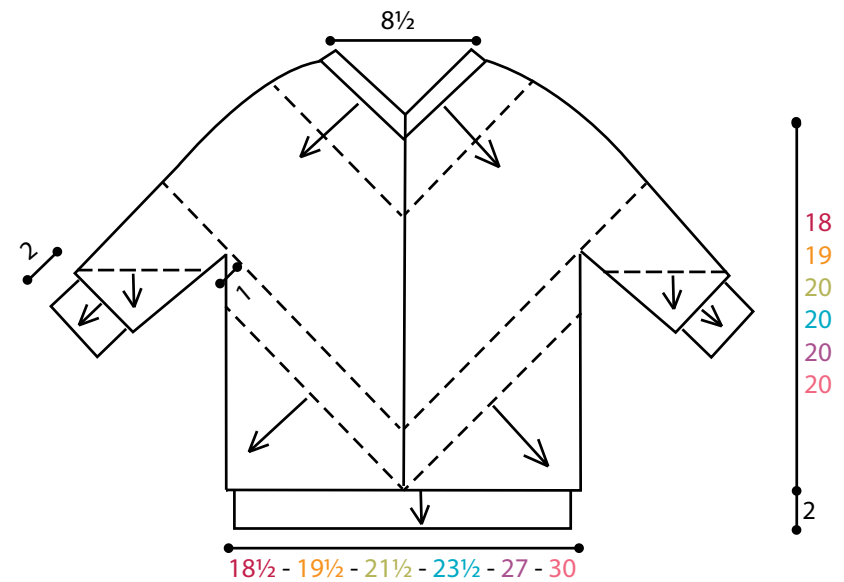
**All Sizes:** Work 2nd Sleeve in same manner.

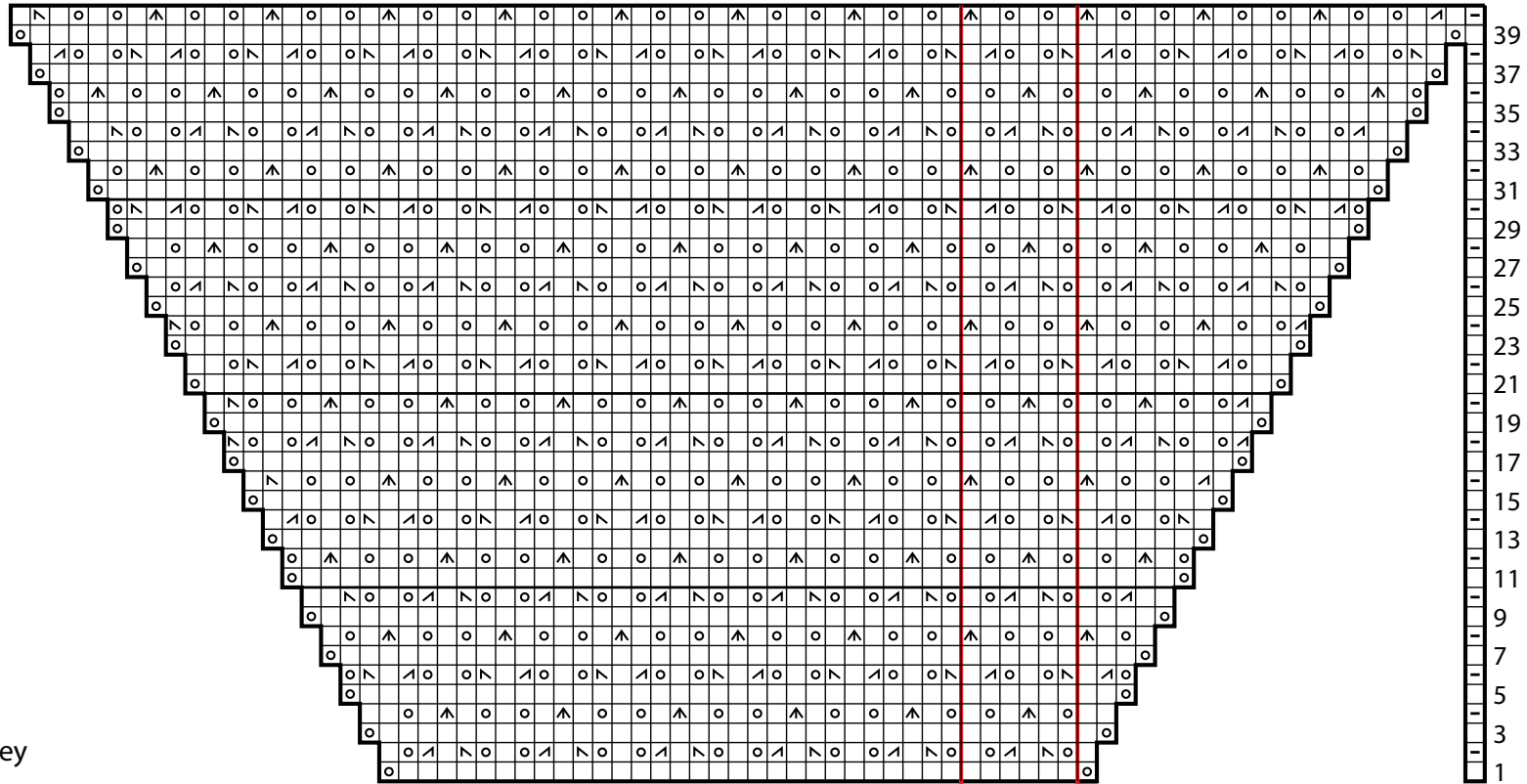
**Bottom Ribbing:** With smaller 24" [60 cm] circular knitting needle, beg at side of Body, pick up and knit **222** (**234-258-282-306-348**) sts evenly around lower edge. Join in rnd. PM for beg of rnd.

Work 2" [5 cm] in (K1. P1) ribbing as given for neck. Cast off in ribbing.

**Sleeve Ribbing:** With double-pointed needles, beg at side of Sleeve pick up and knit **72** (**74-78-82-84-88**) sts evenly around lower edge of sleeve. Divide sts onto 3 needles. Join in rnd. PM for beg of rnd.

Work 2" [5 cm] in (K1. P1) ribbing as given for neck. Cast off in ribbing.





Key

- Knit
- Purl
- K2tog
- ssk
- S1. K2tog. pss0
- Yo

Start here