



Nicole Winer
Designer



KNIT 1 SKILL LEVEL: INTERMEDIATE

ABBREVIATIONS

Alt = Alternate(ing)

Approx = Approximately

Beg = Beginning

Cont = Continue(ity)

Dec = Decrease

K = Knit

K1tbl = Knit next stitch through back loop

K2tog = Knit next 2 stitches together

K2togtbl = Knit next 2 stitches together through back loops

M1 = Make 1 stitch by picking up horizontal loop lying before next stitch and knitting into back of loop

P = Purl

P1tbl = Purl next stitch through back loop

P2tog = Purl next 2 stitches together

P2togtbl = Purl next 2 stitches together through back loops

Pat = Pattern

Pss = Pass slipped stitch over

Rem = Remaining

Rep = Repeat

RS = Right side

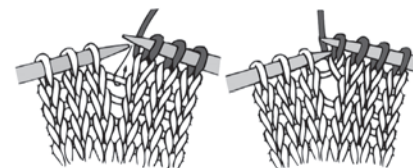
SI1 = Slip next stitch knitwise

Ssk = Slip next 2 stitches one at a time. Pass them back onto left-hand needle, then knit through the back loops together.

St(s) = Stitch(es)

WS = Wrong side

Yo = Yarn over



MATERIALS

Patons® Grace™ (1.75 oz/50g; 136 yds/125 m)

Sizes	XS/S	M	L	XL	2/3XL	4/5XL	
Natural (62008)	10	11	11	12	13	14	balls

Sizes U.S. 4 (3.5 mm) and U.S. 6 (4 mm) knitting needles **or size needed to obtain gauge.** Yarn needle. 6 buttons approx ½" [1 cm] diameter.

SIZES

To fit bust measurement

XS/S	28-34" [71-86.5 cm]
M	36-38" [91.5-96.5 cm]
L	40-42" [101.5-106.5 cm]
XL	44-46" [112-117 cm]
2/3XL	48-54" [122-137 cm]
4/5XL	56-62" [142-157.5 cm]

Finished bust

XS/S	41" [104 cm]
M	44" [112 cm]
L	49" [124.5 cm]
XL	52" [132 cm]
2/3XL	60" [152.5 cm]
4/5XL	68" [172.5 cm]

GAUGE

24 sts and 32 rows = 4" [10 cm] with larger needles in pat.

INSTRUCTIONS

The instructions are written for smallest size. If changes are necessary for larger sizes the instructions will be written thus (). When only one number is given, it applies to all sizes. For ease in working, circle all numbers pertaining to your size.

BACK

With smaller needles, cast on **109** (**119-131-143-167-189**) sts.
1st row: (RS). *K1tbl. P1. Rep from * to last st. K1tbl.
2nd row: *P1tbl. K1. Rep from * to last st. P1tbl.
 Rep last 2 rows (K1tbl. P1) Twisted ribbing for 3" [7.5 cm], ending on a WS row.

Change to larger needles and proceed as follows:

Next row: (RS). K**9** (**10-5-11-12-10**). M1. *K**7** (**9-8-11-13-13**) M1. Rep from * to last **9** (**10-6-11-12-10**) sts. K**9** (**10-6-11-12-10**). **123** (**131-147-155-179-203**) sts.

Next row: Purl.

**Proceed in pat as follows (see chart on page 4):

1st row: K3. *K2tog. yo. K1. yo. ssk. K3. Rep from * to end of row.
2nd and alt rows: Purl.
3rd row: K2. *K2tog. yo. K3. yo. ssk. K1. Rep from * to last st. K1.
5th row: K3. *yo. ssk. K1. K2tog. yo. K3. Rep from * to end of row.
7th row: K4. *yo. Sl1. K2tog. pssso. yo. K5. Rep from * to last 7 sts. yo. Sl1. K2tog. pssso. yo. K4.

9th row: K2. *yo. ssk. K3. K2tog. yo. K1. Rep from * to last st. K1.

11th row: K3. *yo. ssk. K1. K2tog. yo. K3. Rep from * to end of row.

13th row: K2. *K2tog. yo. K3. yo. ssk. K1. Rep from * to last st. K1.

15th row: K1. K2tog. yo. *K5. yo. Sl1. K2tog. pssso. yo. Rep from * to last 8 sts. K5. yo. ssk. K1.

16th row: As 2nd row.

These 1st to 16th rows form Lace Pat.

Cont in Lace Pat until work from beg measures approx 12" [30.5 cm], ending on an 8th row.**

Shape armholes: Keeping cont of pat, cast off **8** (**8-9-10-9-10**) sts beg next **2** (**2-2-2-4-4**) rows. **107** (**115-129-135-143-163**) sts.

1st row: (RS). K1. ssk. Pat to last 3 sts. K2tog. K1.

2nd row: P1. P2tog. Purl to last 3 sts. P2togtbl. P1.

Rep last 2 rows **3** (**3-5-5-6-11**) times more. **91** (**99-105-111-115-115**) sts.

1st row: (RS). K1. ssk. Pat to last 3 sts. K2tog. K1.

2nd row: Purl.

Rep last 2 rows **3** (**5-6-7-5-2**) times more. **83** (**87-91-95-103-109**) sts.

Cont even in pat until armhole measures **8½** (**9-9½-9½-10-10**)" [**21.5** (**23-24-24-25.5-25.5**) cm], ending on a WS row.

Shape shoulders: Keeping cont of pat, cast off **10** (**11-11-12-14-14**) sts beg next 2 rows, then **11** (**11-12-13-14-15**) sts beg following 2 rows. Cast off rem **41** (**43-45-45-47-51**) sts.

LEFT FRONT

***With smaller needles, cast on **53** (**59-65-71-83-93**) sts.

1st row: (RS). *K1tbl. P1. Rep from * to last st. K1tbl.

2nd row: *P1tbl. K1. Rep from * to last st. P1tbl.

Rep last 2 rows (K1tbl. P1) Twisted ribbing for 3" [7.5 cm], ending on a WS row.

Change to larger needles and proceed as follows:

Next row: (RS). K**6** (**5-5-8-6-9**). M1. *K**8** (**7-6-5-10-15**) M1. Rep from * to last **7** (**5-6-8-7-9**) sts. K**7** (**5-6-8-7-9**). **59** (**67-75-83-91-99**) sts.

Next row: Purl.

Work from ** to ** as given for Back.***

Shape armhole: 1st row: (RS). Keeping cont of pat, cast off **8 (8-9-10-9-10)** sts. Pat to end of row. **51 (59-66-73-82-89)** sts.

2nd row: Purl.

Sizes 2/3XL and 4/5XL only:

3rd row: Cast off **(9-10)** sts. Pat to end of row. **(73-79)** sts.

4th row: Purl.

All sizes: Shape armhole and

V-neck: 1st row: (RS). K1. ssk. Pat to last 3 sts. K2tog. K1 (neck edge).

2nd row: Purl to last 3 sts. P2tog. P1. Rep last 2 rows **3 (3-5-5-6-11)** times more. **39 (47-48-55-52-43)** sts.

1st row: (RS). K1. ssk. Pat to last 3 sts. K2tog. K1 (neck edge).

2nd row: Purl

Rep last 2 rows **3 (5-6-7-5-2)** times more. **31 (35-34-39-40-37)** sts.

Sizes M and XL only: 1st row: (RS).

Pat to last 3 sts. K2tog. K1 (neck edge).

2nd row: Purl.

Rep last 2 rows **(1-5)** time(s) more. 33 sts.

All sizes: Keeping cont of pat, dec 1 st at neck edge on every following 4th row from previous dec to **21 (22-23-25-28-29)** sts.

Cont even in pat until armhole measures **8½ (9-9½-9½-10-10)" [21.5 (23-24-24-25.5-25.5) cm]**, ending on a WS row.

Shape shoulder: 1st row: (RS). Cast off **10 (11-11-12-14-14)** sts. Pat to end of row.

2nd row: Purl.

Cast off rem **11 (11-12-13-14-15)** sts.

RIGHT FRONT

Work from *** to *** as given for Left Front.

Shape armhole: 1st row: (RS). Pat to end of row.

2nd row: Cast off **8 (8-9-10-9-10)** sts. Purl to end of row. **51 (59-66-73-82-89)** sts.

Sizes 2/3XL and 4/5XL only:

3rd row: (RS). Pat to end of row.

4th row: Cast off **(9-10)** sts. Purl to end of row. **(73-79)** sts.

All sizes: Shape armhole and V-neck: 1st row: K1. K2tog (neck edge). Pat to last 3 sts. ssk. K1.

2nd row: P1. P2tog. Purl to end of row.

Rep last 2 rows **3 (3-5-5-6-11)** times more. **39 (47-48-55-52-43)** sts.

1st row: (RS). K1. K2tog (neck edge). Pat to last 3 sts. ssk. K1.

2nd row: Purl .

Rep last 2 rows **3 (5-6-7-5-2)** times more. **31 (35-34-39-40-37)** sts.

Sizes M and XL only: 1st row: (RS).

K1. K2tog (neck edge). Pat to end of row.

2nd row: Purl.

Rep last 2 rows **(1-5)** time(s) more. 33 sts.

All sizes: Keeping cont of pat, dec 1 st at neck edge on every following 4th row from previous dec to **21 (22-23-25-28-29)** sts.

Cont even in pat until armhole measures **8½ (9-9½-9½-10-10)" [21.5 (23-24-24-25.5-25.5) cm]**, ending on a RS row.

Shape shoulder: 1st row: (WS). Cast off **10 (11-11-12-14-14)** sts. Purl to end of row.

2nd row: Pat to end of row.

Cast off rem **11 (11-12-13-14-15)** sts.

SLEEVES

With smaller needles, cast on **35 (39-41-43-45-47)** sts.

Work in (K1tbl. P1) Twisted ribbing as given for Back for 3" [7.5 cm], ending on a WS row.

Change to larger needles and proceed as follows:

1st row: (RS). **K2 (2-4-2-1-1)**. M1. *K1. M1. Rep from * to last **2 (2-4-2-1-1)** st(s). **K2 (2-4-2-1-1)**. **67 (75-75-83-89-93)** sts.

2nd row: Purl, inc **0 (0-0-0-2-6)** sts evenly across. **67 (75-75-83-91-99)** sts.

Work in Lace Pat as given for Back until Sleeve measures approx 18" [45.5 cm], ending on an 8th row.

Shape top: Keeping cont of pat, cast off **8 (8-8-10-8-9)** sts beg next **2 (2-2-2-4-4)** rows. **51 (59-59-63-59-63)** sts.

1st row: (RS). K1. ssk. Pat to last 3 sts. K2tog. K1.

2nd row: Purl.

3rd row: Pat to end of row.

4th row: Purl.

Rep last 4 rows **8 (9-9-9-10-10)** times more. **33 (39-39-43-37-41)** sts.

1st row: K1. ssk. Pat to last 3 sts. K2tog. K1.

2nd row: P1. P2tog. Purl to last 3 sts. P2togtbl. P1.

Rep last 2 rows **4 (6-6-6-4-5)** times more, then 1st row **1 (0-0-0-1-0)** time(s) more.

Cast off rem **11 (11-11-15-15-17)** sts.

FINISHING

Pin all pieces to measurements. Cover with a damp cloth leaving cloth to dry. Sew shoulder seams. Sew in Sleeves. Sew side and Sleeve seams.

Button and Buttonhole Band:

With smaller needles, cast on 7 sts.

1st row: (RS). K2. (P1. K1) twice. K1.

2nd row: K1. (P1. K1) 3 times.

Rep last 2 rows until band, when slightly stretched, measures length to fit up Left Front, sewing in place as you go. Place markers on band for 6 buttons, having bottom button ½" [1.5 cm] up from bottom edge,

top button ½" [1.5 cm] below first front dec and rem 4 buttons spaced evenly between.

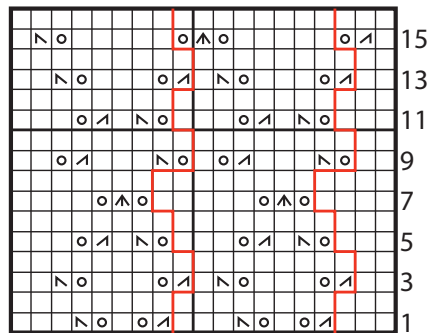
Work buttonholes as follows:

1st row: (RS). Rib 3 sts. Cast off 2 sts. Rib 2 sts.

2nd row: Rib, casting on 2 sts over cast off sts.

Cont in ribbing to fit up neck edge, across back neck edge and down to end of Right Front, noting position of buttonholes. Cast off in ribbing. Sew buttons to correspond to buttonholes.

Lace Pattern



Key * 8-st rep * Start Here

- = Knit on RS rows. Purl on WS rows.
- ▣ = K2tog
- ▢ = ssk
- ▣ = Sl1. K2tog. pss0
- ⊠ = yo

