



KNIT
SKILL LEVEL: INTERMEDIATE



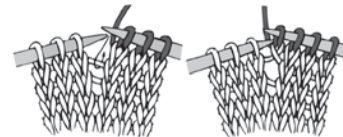
Katherine Poole-Fournier
Designer

ABBREVIATIONS

Beg = Beginning
Cont = Continue
K = Knit
K2tog = Knit next 2 stitches together
M1 = Make 1 stitch by picking up horizontal loop lying before next stitch and knitting into back of loop

P = Purl
Pat = Pattern
P2tog = Purl next 2 stitches together
P2togtbl = Purl next 2 stitches together through back loops
Rem = Remaining
Rep = Repeat
Rnd(s) = Round(s)
RS = Right side

Ssk = Slip next 2 stitches knitwise one at a time. Pass them back onto left-hand needle, then knit through back loops together
St(s) = Stitch(es)
WS = Wrong side



MATERIALS

Patons® Classic Wool Worsted™ (3.5 oz/100 g; 194 yds/177 m)

Sizes	XS/S	M	L	XL	2/3XL	4/5XL	
Main Color (MC)							
Natural Mix (00229)	2	3	4	6	7	8	balls
Contrast A							
Basil (77763)	1	1	1	1	1	1	ball
Contrast B							
Honey (77756)	1	1	2	2	2	2	ball(s)
Contrast C							
Peach Blush (77748)	1	1	2	2	2	2	ball(s)

Sizes U.S. 6 (4 mm) and U.S. 7 (4.5 mm) circular knitting needles 16" [40.5 cm] and 36" [91.5 cm] long **or size needed to obtain gauge.** Stitch marker. 2 stitch holders. Yarn needle.

SIZES

To fit bust measurement

XS/S	28-34" [71-86.5 cm]
M	36-38" [91.5-96.5 cm]
L	40-42" [101.5-106.5 cm]
XL	44-46" [112-117 cm]
2/3XL	48-54" [122-137 cm]
4/5XL	56-62" [142-157.5 cm]

Finished bust

XS/S	36" [91.5 cm]
M	39½" [100.5 cm]
L	43" [109 cm]
XL	50½" [128.5 cm]
2/3XL	57½" [146 cm]
4/5XL	65" [165 cm]

GAUGE

20 sts and 26 rows = 4" [10 cm] in stocking st on larger needles.

INSTRUCTIONS

The instructions are written for smallest size. If changes are necessary for larger size(s) the instructions will be written thus (.). Numbers for each size are shown in the same color throughout the pattern. When only one number is given in black, it applies to all sizes.

Notes: Body is worked in the round to armholes then worked in rows to shape back and front.

When working from chart use Fair Isle technique. Carry yarn not in use loosely across WS of work but never over more than 5 sts. When it must pass over more than 5 sts, weave it over and under color in use on next st or at center point of sts it passes over. The colors are never twisted around one another.

BODY

With MC and smaller circular needle, cast on **180** (**196-216-252-288-324**) sts. Join to work in rnd, placing marker on first st.

1st rnd: *K2. P2. Rep from * around. Rep 1st rnd (K2. P2) ribbing for 2" [5 cm].

Change to larger circular needle and proceed as follows:

Size M only: Next rnd: (K98. M1) twice. 198 sts.

All sizes: Knit **6** (**5-6-6-6-6**) rnds (stocking st).

Work chart to end of chart, reading chart from right to left and noting 9-st rep will be worked **20** (**22-24-28-32-36**) times. See Chart on page 4.

With MC, knit even until work from beg measures 14" [35.5 cm].

Divide for armholes, front, and back:

Next rnd: Cast off first **6** (**6-6-8-8-10**) sts of rnd. K**78** (**87-96-110-128-142**) (including st rem on needle after cast-off). Place **78** (**87-96-110-128-142**) sts just worked onto scrap yarn for Front. Cast off next **12** (**12-12-16-16-20**) sts. K**78** (**87-96-110-128-142**) (including st rem on needle after cast-off). Cast off last **6** (**6-6-8-8-10**) sts of rnd. **78** (**87-96-110-128-142**) sts rem for Back.

BACK

With RS facing, join MC to Back sts. Proceed in rows, working back and forth across needle, as follows:

1st row: (RS). K2. ssk. Knit to last 4 sts. K2tog. K2. **76** (**85-94-108-126-140**) sts.

2nd row: P2. P2tog. Purl to last 4 sts. P2togtbl. P2. **74** (**83-92-106-124-138**) sts.

Rep last 2 rows **1** (**2-3-4-8-10**) time(s) more. **70** (**75-80-90-92-98**) sts.

Next row: K2. ssk. Knit to last 4 sts. K2tog. K2.

Next row: Purl.

Rep last 2 rows **0** (**3-3-7-8-8**) times more. **68** (**67-72-74-74-80**) sts.

Cont even until armhole measures **8** (**8½-9-9½-9½-10**)" [**20.5** (**21.5-23-24-24-25.5**) cm].

Shape shoulders: Cast off **8** (**8-9-9-9-10**) sts beg of next 4 rows.

Leave rem **36** (**35-36-38-38-40**) sts on st holder for back neck.

FRONT

With RS facing, join MC to Front and proceed as follows:

1st row: (RS). K2. ssk. Knit to last 4 sts. K2tog. K2. **76** (**85-94-108-126-140**) sts.

2nd row: P2. P2tog. Purl to last 4 sts. P2togtbl. P2. **74** (**83-92-106-124-138**) sts.

Rep last 2 rows **1** (**2-3-4-6-7**) time(s) more. **70** (**75-80-90-100-110**) sts.

Left Front

Sizes XS/S, M, L and XL only: Shape Armhole and Neck:

Next row: K2. ssk. K**18** (**20-22-28**). K2tog. K2. Turn. **24** (**26-28-34**) sts.

Place rem sts on scrap yarn.

Next row: Purl.

Sizes M, L and XL only: Next row: K2. ssk. Knit to last 4 sts. K2tog. K2.

Next row: Purl.

Rep last 2 rows (**2-2-6**) times more. (**20-22-20**) sts.

Sizes XS/S, M, L and XL only: Next row: (RS). Knit to last 4 sts.

K2tog. K2. **23** (**19-21-21**) sts.

Next row: Purl.

Rep last 2 rows **7** (**3-3-3**) times more. **16** (**16-18-18**) sts.

Sizes 2/3XL and 4/5XL only: Shape Armhole and Neck:

1st row: K2. ssk. K**34** (**37**). K2tog. K2. Turn. **40** (**43**) sts. Place rem sts on scrap yarn.

2nd row: Purl to last 4 sts. P2tog. P2. **39** (**42**) sts.

3rd row: K2. ssk. Knit to last 4 sts. K2tog. K2. **37 (40)** sts.

4th row: Purl to last 4 sts. P2tog. P2. **36 (39)** sts
Rep last 2 rows **0 (1)** time more. 36 sts.

Next row: K2. ssk. Knit to last 4 sts. K2tog. K2.

Next row: Purl.
Rep last 2 rows **8 (7)** times more. **18 (20)** sts.

All sizes: Cont even until armhole measures same length as Back, ending on a purl row.

Shape shoulder: Next row: Cast off **8 (8-9-9-9-10)** sts. Knit to end of row.

Next row: Purl.
Cast off rem **8 (8-9-9-9-10)** sts.

Right Front

Place next **18 (19-20-18-16-20)** sts (center front) onto a st holder. With RS facing, join MC to Right Front and proceed as follows:

Sizes XS/S, M, L, and XL only: Shape Armhole and Neck:

Next row: K2. ssk. K**18 (20-22-28)**. K2tog. K2. **24 (26-28-34)** sts.

Next row: Purl.

Sizes M, L and XL only: Next row: K2. ssk. Knit to last 4 sts. K2tog. K2.

Next row: Purl.
Rep last 2 rows (**2-2-6**) times more. (**20-22-20**) sts.

Sizes XS/S, M, L and XL only: Next row: (RS). K2. ssk. Knit to end of row. **23 (19-21-21)** sts.

Next row: Purl.
Rep last 2 rows **7 (3-3-3)** times more. **16 (16-18-18)** sts.

Sizes 2/3XL and 4/5XL only: Shape Armhole and Neck:

1st row: K2. ssk. K**34 (37)**. K2tog. K2. Turn. **40 (43)** sts.

2nd row: P2. P2tog. Purl to end of row. **39 (42)** sts.

3rd row: K2. ssk. Knit to last 4 sts. K2tog. K2. **37 (40)** sts.

4th row: P2. P2tog. Purl to end of row. **36 (39)** sts

Rep last 2 rows **0 (1)** time more. 36 sts.

Next row: K2. ssk. Knit to last 4 sts. K2tog. K2.

Next row: Purl.
Rep last 2 rows **8 (7)** times more.

18 (20) sts.

All sizes: Cont even until armhole measures same length as Back, ending on a knit row.

Next row: (WS). Cast off **8 (8-9-9-9-10)** sts. Purl to end of row.

Next row: Knit.
Cast off rem **8 (8-9-9-9-10)** sts.

FINISHING

Sew shoulder seams.

Neckband: With smaller circular needle and MC, K**36 (35-36-38-38-40)** from back neck st holder. Pick up and knit **35 (39-36-38-41-42)** sts down left front neck edge. K**18 (19-20-18-16-20)** from front neck st holder. Pick up and knit **35 (39-36-38-41-42)** sts up right front neck edge. Join in rnd, placing marker on first st. **124 (132-128-132-136-144)** sts.

Next rnd: *K2. P2. Rep from * around.

Rep last rnd (K2. P2) ribbing for 1½" [4 cm].

Cast off in ribbing.

Armbands: With smaller circular needle, MC and beg at center of cast off sts at armhole, pick up and knit **96 (100-108-116-120-128)** sts evenly around armhole. Join in rnd, placing marker on first st.

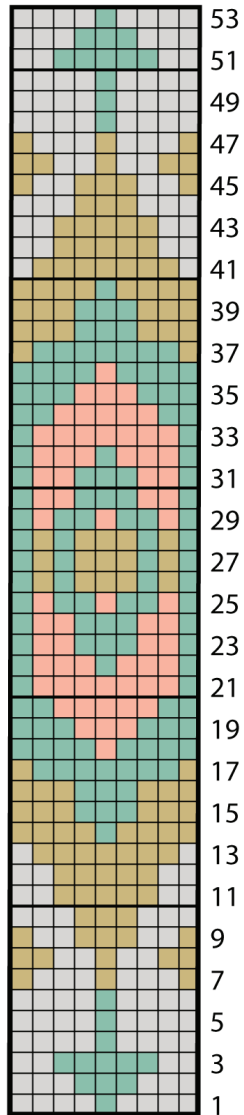
Next rnd: *K2. P2. Rep from * around.

Rep last rnd (K2. P2) ribbing for 1½" [4 cm].

Cast off in ribbing.

Pin to measurements on a flat surface. Cover with a damp cloth, leaving cloth to dry.





9-st rep Start here

- Key
- = Main Color (MC)
 - = Contrast A
 - = Contrast B
 - = Contrast C

