



Svetlana Avrakh
Designer



KNIT | SKILL LEVEL: INTERMEDIATE

ABBREVIATIONS

Alt = Alternate(ing)

Approx = Approximately

Beg = Beginning

C3B = Slip next stitch onto cable needle and leave at back of work. K2, then K1 from cable needle

C3F = Slip next 2 stitches onto cable needle and leave at front of work. K1, then K2 from cable needle

C6B = Slip next 3 stitches onto cable needle and leave at back of work. K3, then K3 from cable needle

C6F = Slip next 3 stitches onto cable needle and leave at front of work. K3, then K3 from cable needle

Cont = Continue(ity)

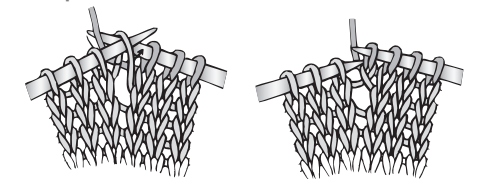
Dec = Decreasing

Inc = Increasing

K = Knit

K1tbl = Knit next stitch through back loop

M1 = Make 1 stitch by picking up horizontal loop lying before next stitch and knitting into back of loop.



M1P = Make 1 stitch by picking up horizontal loop lying before next stitch and purling into back of loop.

Pat = Pattern

P = Purl

P1tbl = Purl next stitch through back loop

MATERIALS

Patons® Alpaca Blend™ (3.5 oz/100 g; 155 yds/142 m)

Sizes XS/S M L XL 2/3XL 4/5XL

Tiger Eye (01013) 7 7 8 8 9 10 balls

Sizes U.S. 9 (5.5 mm) and U.S. 10 (6 mm) knitting needles or size needed to obtain gauge. Cable needle. Stitch markers.

P2tog = Purl next 2 stitches together
PM = Place marker
Rep = Repeat
RS = Right side
Sm = Slip marker
St(s) = Stitch(es)
T5B = Slip next 2 stitches onto cable needle and leave at back of work. K3, then P2 from cable needle
T5F = Slip next 3 stitches onto cable needle and leave at front of work. P2, then K3 from cable needle
WS = Wrong side

SIZES

To fit bust measurement

XS/S 28-34" [71-86.5 cm]
M 36-38" [91.5-96.5 cm]
L 40-42" [101.5-106.5 cm]
XL 44-46" [112-117 cm]
2/3XL 48-54" [122-137 cm]
4/5XL 56-62" [142-157.5 cm]

Finished bust

XS/S 42" [106.5 cm]
M 44" [112 cm]
L 48" [122 cm]
XL 52" [132 cm]
2/3XL 60" [152.5 cm]
4/5XL 64" [162.5 cm]

GAUGE

15 sts and 20 rows = 4" [10 cm] in stocking st with larger needles

INSTRUCTIONS

The instructions are written for smallest size. If changes are necessary for larger size(s) the instructions will be written thus (). Numbers for each size are shown in the same color throughout the pattern. When only one number is given in black, it applies to all sizes.

Cable Panel (worked over 17 sts)

See chart on page 4

1st row: (RS). P1. T5F. T5B. T5F. P1.

2nd and alt rows: Knit all knit sts and purl all purl sts as they appear.

3rd row: P3. C6F. P4. K3. P1.

5th row: P1. T5B. T5F. T5B. P1.

7th row: P1. K3. P4. C6B. P3.

8th row: As 2nd row.

These 8 rows form Cable Panel.

BACK and FRONT (make alike)

With smaller needles, cast on **82** (82-90-98-118-122) sts.

1st row: (RS). K2. *P2. K2. Rep from * to end of row.

2nd row: P2. *K2. P2. Rep from * to end of row.

Rep last 2 rows of (K2. P2) ribbing

for 3" [7.5 cm], ending on a RS row.

Next row: (WS). Knit.

Next row: Purl.

Next row: K8 (7-11-7-0-10). M1. [K5 (4-4-5-8-6). M1] 13 (17-17-17-14-17) times. Knit to end of row. 96 (100-108-116-132-140) sts.

Change to larger needles and proceed as follows:

Next row: (Set up row-RS). K19 (21-25-29-37-41). P1. K6. P1. K1. P1. K3. P4. K6. P3. K6. P1. K3. P4. K6. P3. K1. P1. K6. P1. K19 (21-25-29-37-41).

Next row: (Set up row-WS). (P1. K1) 10 (11-13-15-19-21) times. Knit all knit sts and purl all purl sts as they appear to last 20 (22-26-30-38-42) sts. (K1. P1) 10 (11-13-15-19-21) times.

Proceed in pat as follows:

1st row: (RS). K19 (21-25-29-37-41). P1. C3B. C3F. P1. K1tbl. Work 1st row of Cable Panel. C3B. C3F. Work 1st row of Cable Panel. K1tbl. P1. C3B. C3F. P1. K19 (21-25-29-37-41).

2nd row: (P1. K1) 10 (11-13-15-19-21) times. P6. K1. P1tbl. Work 2nd row of Cable Panel. P6. Work 2nd row of Cable Panel. P1tbl. K1. P6. (K1. P1) 10 (11-13-15-19-21) times.

3rd row: (RS). K19 (21-25-29-37-41). P1. C3B. C3F. P1. K1tbl. Work 3rd row of Cable Panel. C3B. C3F. Work 3rd row of Cable Panel. K1tbl. P1. C3B. C3F. P1. K19 (21-25-29-37-41).

4th row: (P1. K1) 10 (11-13-15-19-21) times. P6. K1. P1tbl. Work 4th row of Cable Panel. P6. Work 4th row of Cable Panel. P1tbl. K1. P6. (K1. P1) 10 (11-13-15-19-21) times.

Last 4 rows form Broken Rib pat, (K1tbl. P1) ribbing and (C3B. C3F) cable pat. Cable Panel is now in position.

Cont in pat until work from beg measures approx 15½ (15½-15½-15½-16-16)" [39.5 (39.5-39.5-39.5-40.5-40.5) cm], ending on a WS row.

Keeping cont of pat, divide Cables as follows:

1st row: (RS). K19 (21-25-29-37-41). P1. PM. C3B. C3F. P1. K1tbl. Work appropriate row of Cable Panel. C3B. PM. M1P. PM. C3F. Work appropriate row of Cable Panel. K1tbl. P1. C3B. C3F. PM. P1. K19 (21-25-29-37-41). 97 (101-109-117-133-141) sts.

2nd row: (Pat to marker. Sm) twice. K1. Sm. Pat to marker. Sm. Pat to end of row.

3rd row: Pat to 2 sts before marker. P2tog. Sm. Pat to next marker. Sm. M1P. K1. M1P. Sm. Pat to next marker. Sm. P2tog. Pat to end of row.

4th row: Pat to marker. (Pat to marker. Sm) twice. K3. Sm. Pat to marker. Sm. Pat to end of row.

5th row: Pat to 2 sts before marker. P2tog. Sm. Pat to next marker. Sm. M1P. K3. M1P. Sm. Pat to next marker. Sm. P2tog. Pat to end of row.

6th row: Pat to marker. (Pat to marker. Sm) twice. (K1. P1) twice. K1. Sm. Pat to marker. Sm. Pat to end of row.

7th row: Pat to 2 sts before marker. P2tog. Sm. Pat to next marker. Sm. M1P. K5. M1P. Sm. Pat to next marker. Sm. P2tog. Pat to end of row.

8th row: Pat to marker. (Pat to marker. Sm) twice. (K1. P1) 3 times. K1. Sm. Pat to marker. Sm. Pat to end of row. Panel Pat, (K1tbl. P1) ribbing and (C3B. C3F) cable pat are now in position.

Keeping cont of pat as established, working P2tog each side of (C3B. C3F) cable pat and taking inc sts into Broken Rib pat until there are 39 (43-53-61-61-61) sts at center between C3B and C3F cables.

Sizes XS/S and M only: 1st row: P2tog. Remove marker. Pat to next marker. Sm. M1P. Knit to next marker. M1P. Sm. Pat to last 2 sts. Remove marker. P2tog.

2nd row: Pat to marker. Sm. *K1. P1. Rep from * to last st before next marker. K1. Sm. Pat to end of row. Rep last 2 rows 4 (3) times more. 49 (51) sts at center between C3B and C3F cables.

All sizes: Note: Work from beg will measure approx 25 (25-26-27-28-28)" [63.5 (63.5-66-68.5-71-71) cm].

Shape shoulders and Collar: Keeping cont of pat, cast off 8 (8-9-11-13-14) sts beg next 6 (4-4-4-6-6) rows, then 0 (9-10-10-0-0) sts beg following 0 (2-2-2-0-0) rows. 49 (51-53-53-55-57) sts.

Dec 1 st each end of needle on next 3 rows. 43 (45-47-47-49-51) sts.

Work 4 rows even in pat. Cast off.

SLEEVES

Cable insert: With larger needles, cast on 17 sts.

Work in Cable Panel until work from beg measures approx 10 (10-10-11-11-11)" [25.5 (25.5-25.5-28-28-28) cm], ending on a WS row. Cast off. **Do not** break yarn.

Ribbing: Turn Cable Insert sidewise. With smaller needles and RS facing, pick up and knit 38 (38-38-42-42-42) sts evenly across long side of work.

Next row: (WS). Knit.

Next row: Purl.

Next row: Knit.

Work in K2. P2 ribbing as given for Back for 3" [7.5 cm], ending on a WS row. Cast off in ribbing.

Body of Sleeve: Turn work sidewise. With larger needles and RS facing, pick up and knit 41 (41-43-45-45-45) sts evenly across opposite long side of Cable Insert. **1st row:** (WS). *P1. K1. Rep from * to last st. P1.

2nd row: Knit.

Last 2 rows form Broken Rib pat. Cont in Broken Rib pat, inc 1 st each end of needle on next and every following 6th (6th-4th-4th-2nd-2nd) row to 45 (45-57-61-49-57) sts, then every following 8th (8th-6th-6th-4th-4th) row to 57 (57-65-65-69-73) sts, taking inc sts into Broken Rib pat.

Cont even in pat until work from lower edge of cuff measures 18" [45.5 cm], ending on a WS row.

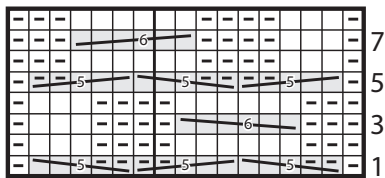
Shape top: Cast off 3 sts at beg of next 14 (14-18-18-20-22) rows. Cast off rem 15 (15-11-11-9-7) sts.

FINISHING

Pin pieces to measurements. Cover with a damp cloth leaving cloth to dry.





Sew shoulder and neck seams. PM **8½** (**8½-9½-9½-10-10½**)" [**21.5** (**21.5-24-24-25.5-26.5**) cm] down from shoulders on Back and Front. Sew in sleeves between markers. Sew side and sleeve seams.

Cable Panel



Start Here

Key

- = Knit on RS rows. Purl on WS rows.
- = Purl on RS rows. Knit on WS rows.
-  = C6B
-  = C6F
-  = T5B
-  = T5F

