



Gayle Bunn
Designer

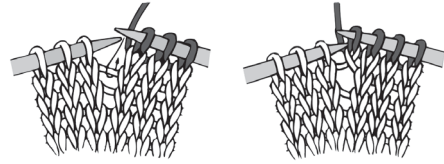


KNIT | SKILL LEVEL: **INTERMEDIATE**

ABBREVIATIONS

- Beg** = Beginning
- Dec** = Decrease(ing)
- Inc** = Increase(ing)
- K** = Knit
- K2tog** = Knit next 2 stitches together
- M1** = Increase 1 stitch by picking up loop lying before next stitch and knitting into back of loop.

- Ssk** = Slip next 2 stitches knitwise one at a time. Pass them back onto left-hand needle, then knit through back loops together
- St(s)** = Stitch(es)
- Tog** = Together
- WS** = Wrong side
- WTK** = Slip next stitch purlwise onto right-hand needle. Bring yarn to front. Slip stitch back onto left-hand needle. Bring yarn to back of work, ready to purl next row. Turn.
- WTP** = With yarn in front, slip next stitch purlwise to right-hand needle. Bring yarn to back. Slip stitch back onto left-hand needle. Bring yarn to front of work, ready to knit next row. Turn.



- P** = Purl
- Rem** = Remaining
- Rep** = Repeat
- Rnd(s)** = Round(s)
- RS** = Right side

MATERIALS

Patons® Alpaca Blend™ (3.5 oz/100 g; 155 yds/142 m)

Sizes	XS/S	M/L	XL/2XL	3/5XL	
Main Color (MC) Onyx (01001)	5	6	7	8	balls
Contrast A Birch (01019)	2	2	3	3	balls

Sizes U.S. 9 (5.5 mm) and U.S. 10 (6 mm) circular knitting needles 36" [91.5 cm] long. Set of four sizes U.S. 9 (5.5 mm) and U.S. 10 (6 mm) double-pointed knitting needles **or size needed to obtain gauge.** Stitch marker. 4 st holders.

SIZES

To fit bust measurement

XS/S	28-34" [71-86.5 cm]
M/L	36-42" [91.5-106.5 cm]
XL/2XL	44-50" [112-127 cm]
3/5XL	52-62" [132-157.5 cm]

Finished bust

XS/S	42" [106.5 cm]
M/S	48" [122 cm]
XL/2XL	56" [142 cm]
3/5XL	63" [160 cm]

GAUGE

15 sts and 20 rows = 4" [10 cm] in stocking st with larger needles.

INSTRUCTIONS

The instructions are written for smallest size. If changes are necessary for larger size(s) the instructions will be written thus (). Numbers for each size are shown in the same color throughout the pattern. When only one number is given in black, it applies to all sizes.

Notes:

- Pullover is worked from neck edge down with very deep yoke.
- After working Cowl Neck, there are short-turn rows to establish front neck shaping.

- When working from charts, carry yarn not in use loosely across WS of work but never over more than 5 sts. When it must pass over more than 5 sts, weave it over and under color in use on next st or at center point of sts it passes over. The colors are never twisted around one another.

BODY

Cowl Neck: With MC and set of 4 smaller needles, beg at neck edge cast on **76 (76-80-80)** sts. Divide sts onto 3 needles. Join in rnd, placing marker on first st (center back).

1st rnd: *K2. P2. Rep from * around.

Rep last rnd 3 times more, inc 4 sts evenly around last rnd. **80 (80-84-84)** sts.

Change to set of larger needles. Work Chart I to end of chart, noting 4-st rep will be worked **20 (20-21-21)** times.

Charts are shown on page 3.

Next rnd: With A, *K**8 (8-7-7)**. M1. Rep from * around. **90 (90-96-96)** sts.

Shape front neck - Short-turn rows: **Next row:** With A, K**36 (36-37-37)**. WTK. **Turn.**

Next row: Slip first wrapped st. P**72 (72-74-74)**. WTP. **Turn.**

Next row: Slip first wrapped st. K**69 (69-71-71)**. WTK. **Turn.**

Next row: Slip first wrapped st. P**66 (66-68-68)**. WTP. **Turn.**

Next row: Slip first wrapped st. Knit to marker.

Note: When knitting into wrapped sts on next rnd, lift 'wrap' onto needle and knit the 'wrap' tog with wrapped st to tighten work and avoid any gaps.

Next rnd: Knit, working all wrapped sts as described in Note.

Next rnd: With A, *K**3 (3-2-2)**. M1. Rep from * around. **120 (120-144-144)** sts.

Work Chart II to end of chart, noting 4-st rep will be worked **30 (30-36-36)** times.

Next rnd: With MC, knit.

Next rnd: With MC, *K**3 (3-4-2)**. M1. Rep from * around. **160 (160-180-216)** sts.

Next rnd: With MC, knit.

Work Chart III to end of chart, noting 4-st rep will be worked **40 (40-45-54)** times.

Next rnd: With A, knit.

Next rnd: With A, *K**4 (3-3-3)**. M1. Rep from * to last **0 (4-0-0)** sts. (K2. M1) **0 (2-0-0)** time(s). **200 (214-240-288)** sts.

Next rnd: With A, knit inc **0 (2-8-0)** sts evenly around. **200 (216-248-288)** sts.

Work Chart IV to end of chart, noting 8-st rep will be worked **25 (27-31-36)** times.

Next rnd: With A, knit.

Next rnd: With A, *K**3 (3-3-4)**. M1. Rep from * to last **8 (0-2-0)** sts. K**8 (0-2-0)**. **264 (288-330-360)** sts.

Next rnd: With A, knit, inc **0 (0-6-0)** sts evenly around. **264 (288-336-360)** sts.

Work Chart V to end of chart, noting 24-st rep will be worked **11 (12-14-15)** times.

Next rnd: With A, knit.

Divide Body and Sleeves: **Next rnd:** With A, K**40 (44-53-58)**. Cast on 4 sts. Slip next **52 (56-62-64)** sts onto contrast color length of yarn for Sleeve. K**80 (88-**

106-116 (Front). Cast on 4 sts. Slip next **52 (56-62-64)** sts onto contrast color length of yarn for Sleeve. **K40 (44-53-58). 168 (184-220-240)** sts for Body.

Next rnd: With A, knit, dec **0 (0-4-0)** sts evenly around. **168 (184-216-240)** sts.

Work Chart VI to end of chart, noting 8-st rep will be worked **21 (23-27-30)** times. Break A.

Next rnd: With MC, knit dec **8 (4-8-4)** sts evenly around. **160 (180-208-236)** sts.

Knit even until work from cast on sts at underarm measures **12 (12-13-14)" [30.5 (30.5-33-35.5) cm]**.

Next rnd: *K2. P2. Rep from * around.

Rep last rnd for 2" [5 cm].

Next rnd: Knit.

Cast off knitwise.

SLEEVES

With RS facing, set of larger needles and A, beg in center of 4 sts cast on edge, pick up and knit 2 sts. **K52 (56-62-64)** from length of yarn. Pick up and knit 2 sts across rem half of cast on edge. **56 (60-66-68)** sts. Divide

sts onto 3 needles. Join in rnd, placing marker on first st.

Next rnd: With A, knit dec **0 (4-2-4)** sts evenly around. **56 (56-64-64)** sts.

Work Chart VI to end of chart, noting 8-st rep will be worked **7 (7-8-8)** times. Break A.

Next rnd: With MC, knit dec 4 sts evenly around. **52 (52-60-60)** sts.

Knit 6 rnds even.

Next rnd: K2tog. Knit to last 2 sts. ssk.

Rep last 7 rnds 5 times more. **40 (40-48-48)** sts.

Knit even until work from cast on sts at underarm measures 13" [33 cm].

Change to set of smaller needles.

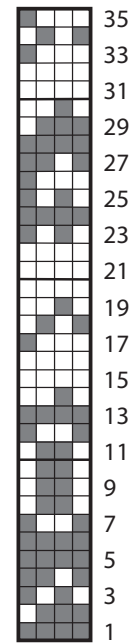
Next rnd: *K2. P2. Rep from * around.

Rep last rnd for 1½" [4 cm].

Next rnd: Knit.

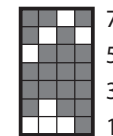
Cast off knitwise.

Chart I



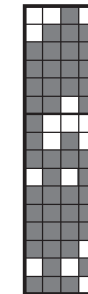
4-st rep Start Here

Chart II



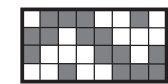
4-st rep Start Here

Chart III



4-st rep Start Here

Chart IV



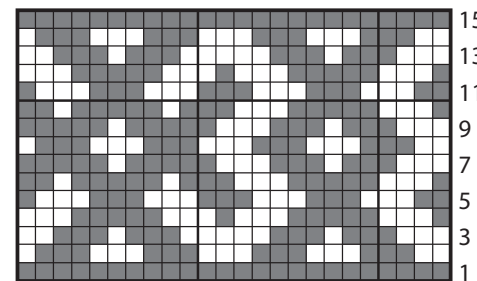
8-st rep Start Here

Key

■ = MC

□ = Contrast A

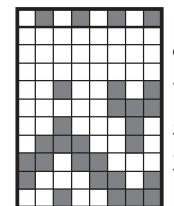
Chart V



24-st rep

Start Here

Chart VI



8-st rep Start Here

