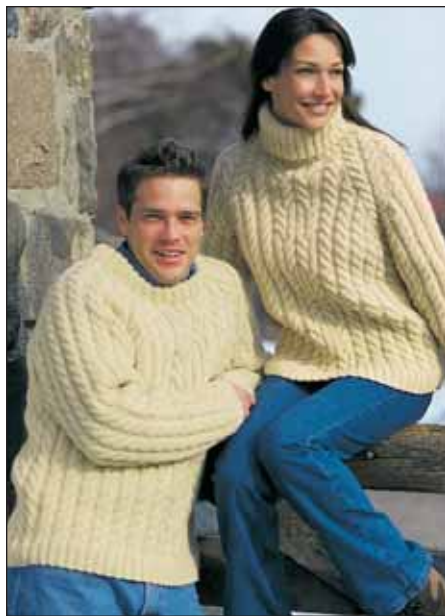


# Patons® Classic Wool

## Patons® DECOR



### ROPE-TWIST RAGLAN

#### SIZES

#### Bust/chest measurement

Small	30-32 ins	[76-81	cm ]
Medium	34-36 ins	[86-91	cm ]
Large	38-40 ins	[97-102	cm ]
Extra-Large	42-44 ins	[107-112	cm ]

#### Finished bust/chest

Small	43½ ins	[110.5	cm ]
Medium	45 ins	[114.5	cm ]
Large	49 ins	[124.5	cm ]
Extra-Large	50½ ins	[128.5	cm ]

#### MATERIALS

Patons Classic Wool (100 g/3.5 oz)  
or Patons Décor (100 g/3.5 oz)

Size	S	M	L	XL
	10	10	11	11 balls

Sizes 4 mm (U.S. 6) and 5 mm (U.S. 8) knitting needles **or size needed to obtain tension**. 2 st holders. Cable needle.

#### TENSION

18 sts and 24 rows = 4 ins [10 cm] in stocking st.

#### ABBREVIATIONS

**C6F** = slip next 3 sts onto a cable needle and leave at front of work. K3, then K3 from cable needle.

**C6B** = slip next 3 sts onto a cable needle and leave at back of work. K3, then K3 from cable needle.

#### INSTRUCTIONS

*The instructions are written for smallest size. If changes are necessary for larger sizes, the instructions will be written thus: ( ).*

**PANEL PAT A** (worked over 9 sts).

**1st row:** (RS). K6. P3.

**2nd and alt rows:** K3. P6.

**3rd row:** C6F. P3.

**5th row:** As 1st row.

**6th row:** As 2nd row.

These 6 rows form Panel Pat A.

**PANEL PAT B** (worked over 22 sts).

**1st row:** (RS). K2. (P2. K6) twice. P2. K2.

**2nd row:** P2. (K2. P6) twice. K2. P2.

**3rd row:** K2. P2. C6F. P2. C6B. P2. K2.

**4th row:** As 2nd row.

**5th row:** As 1st row.

**6th row:** As 2nd row.

**7th to 18th rows:** Rep 1st to 6th rows twice more.

**19th row:** K6. P2. (K2. P2) twice. K6.

**20th row:** P6. K2. (P2. K2) twice. P6.

**21st row:** C6B. (P2. K2) twice. P2. C6F.

**22nd row:** As 20th row.

**23rd row:** As 19th row.

**24th row:** As 20th row.

**25th to 36th rows:** Rep 19th to 24th rows twice more.

These 36 rows form Panel Pat B.

**PANEL PAT C** (worked over 9 sts).

**1st row:** P3. K6.

**2nd and alt rows:** P6. K3.

**3rd row:** P3. C6B.

**5th row:** As 1st row.

**6th row:** As 2nd row.

These 6 rows form Panel Pat C.

#### FRONT

\*\*With smaller needles, cast on 122 (124-138-140) sts.

**1st row:** (RS). P2 (3-2-3). \*K2. P2. Rep from \* to last 4 (5-4-5) sts. K2. P2 (3-2-3).

**2nd row:** K2 (3-2-3). \*P2. K2. Rep from \* to last 4 (5-4-5) sts. P2. K2 (3-2-3).

Rep last 2 rows (K2. P2) ribbing 4 more times, then work 1st row once.

**Next row:** (WS). (Inc 1 st in next st knitwise) 1 (2-1-2) time(s). K1. (P6. Inc 1 st in next st knitwise. K1) 6 (6-7-7) times. P2. (K2. P6) twice. K2. P2. (Inc 1 st in next st knitwise. K1. P6) 6 (6-7-7) times. K1. (Inc 1 st in next st knitwise) 1 (2-1-2) time(s). 136 (140-154-158) sts.



ABBREVIATIONS: [www.patonsyarns.com/glossary](http://www.patonsyarns.com/glossary)

Change to larger needles and proceed in pat as follows:

**1st row:** P3 (5-3-5). (Work 1st row of Panel Pat A) 6 (6-7-7) times. Work 1st row of Panel Pat B. (Work 1st row of Panel Pat C) 6 (6-7-7) times. P3 (5-3-5).

**2nd row:** K3 (5-3-5). (Work 2nd row of Panel Pat C) 6 (6-7-7) times. Work 2nd row of Panel Pat B. (Work 2nd row of Panel Pat A) 6 (6-7-7) times. K3 (5-3-5).

Panel pats are now in position.

Cont in pat, keeping cont of panel pats, until work from beg measures 13½ (14-14½-15) ins [34.5 (35.5-37-38) cm], ending with RS facing for next row.

**Shape raglans:** Keeping cont of pat, cast off 1 (3-1-3) st(s) beg next 2 rows. 134 (134-152-152) sts.

**1st row:** (RS). P2. Work 6 cable sts in pat as established. P2tog. Pat to last 10 sts. P2tog. Work 6 cable sts in pat as established. P2.

**2nd row:** K2. P6. Sl1. K1. pssso. Pat to last 10 sts. K2tog. P6. K2.

Rep last 2 rows 13 (12-19-19) times more. 78 (82-72-72) sts.\*\*

**Next row:** P2. Work 6 cable sts in pat. P2tog. Pat to last 10 sts. P2tog. Work 6 cable sts in pat. P2.

**2nd row:** K2. P6. K1. Pat to last 9 sts. K1. P6. K2.

Rep last 2 rows 10 (12-6-6) times more. 56 (56-58-58) sts.

**Neck shaping: 1st row:** (RS). P2. Work 6 cable sts in pat. P2tog. Pat across next 7 (7-8-8) sts (neck edge).

**Turn.**

**2nd row:** Work 2tog. Pat to last 9 sts. K1. P6. K2.

**3rd row:** P2. Work 6 cable sts in pat. P2tog. Pat to last 2 sts. Work 2tog.

**4th row:** As 2nd row.

**5th row:** P2. Work 6 cable sts in pat. P1. Pat to last 2 sts. Work 2tog.

**6th row:** Pat to last 9 sts. K1. P6. K2.

**7th row:** P2. Work 6 cable sts in pat. P1 (1-2-2). P2tog.

**8th row:** As 6th row. 10 (10-11-11) sts.

**Sizes L and XL only: Next row:** P2. Work 6 cable sts in pat. P1. P2tog.

**Next row:** K2. P6. K2.

**All Sizes: Next row:** P2. Work 6 cable sts in pat. P2tog.

**Next row:** K1. P6. K2.

**Next row:** P2tog. Work 6 cable sts in pat. P1.

**Next row:** K1. P6. K1.

**Next row:** P1. (K2tog) 3 times. P1.

**Next row:** K1. P3tog. K1.

**Next row:** Sl1. K2tog. pssso. Fasten off.

With RS of work facing, slip next 22 sts for center front neck onto a st holder. Join yarn to rem sts.

**1st row:** (RS). Pat to last 10 sts. P2tog. Work 6 cable sts in pat. P2.

**2nd row:** K2. P6. K1. Pat to last 2 sts. Work 2tog.

**3rd row:** Work 2tog. Pat to last 10 sts. P2tog. Work 6 cable sts in pat. P2.

**4th row:** As 2nd row.

**5th row:** Work 2tog. Pat to last 9 sts. P1. Work 6 cable sts in pat. P2.

**6th row:** K2. P6. K1. Pat to end of row.

**7th row:** P2tog. P1 (1-2-2). Work 6 cable sts in pat. P2.

**8th row:** As 6th row. 10 (10-11-11) sts.

**Sizes L and XL only: Next row:** P2tog. P1. Work 6 cable sts in pat. P2.

**Next row:** K2. P6. K2.

**All Sizes: Next row:** P2tog. Work 6 cable sts in pat. P2.

**Next row:** K2. P6. K1.

**Next row:** P1. Work 6 cable sts in pat. P2tog.

**Next row:** K1. P6. K1.

**Next row:** P1. (K2tog) 3 times. P1.

**Next row:** K1. P3tog. K1.

**Next row:** Sl1. K2tog. pssso. Fasten off.

## BACK

Work from \*\* to \*\* as given for Front.

**Next row:** (RS). P2. Work 6 cable sts in pat. P2tog. Pat to last 10 sts. P2tog. Work 6 cable sts in pat. P2.

**2nd row:** K2. P6. K1. Pat to last 9 sts. K1. P6. K2.

Rep last 2 rows 17 (19-14-14) times more. Leave rem 42 sts on a st holder.

## RIGHT SLEEVE

\*\*\*With smaller needles, cast on 54 (54-58-58) sts.

**1st row:** (RS). P2. \*K2. P2. Rep from \* to end of row.

**2nd row:** K2. \*P2. K2. Rep from \* to end of row.

These 2 rows form (K2. P2) ribbing. Work a further 10 rows in (K2. P2) ribbing, inc 21 (21-26-26) sts evenly across last row. 75 (75-84-84) sts.\*\*\*

Change to larger needles and proceed in pat as follows:

**1st row:** (RS). P3. \*Work 1st row of Panel Pat A. Rep from \* to end of row.

**2nd row:** \*Work 2nd row of Panel Pat A. Rep from \* to last 3 sts. K3.

Panel Pat A is now in position.

\*\*\*\*Cont in pat inc 1 st each end of needle on next and every following 4th row to 105 (105-112-116) sts, then on following 6th rows to 111 (115-120-124) sts, taking inc sts into pat.

Cont even in pat until work from beg measures 17½ (18-18½-19) ins [44.5 (45.5-47-48.5) cm], ending with RS facing for next row.

**Shape raglans:** Keeping cont of pat, cast off 1 (3-1-3) st(s) beg next 2 rows. 109 (109-118-118) sts.

**1st row:** P2. Work 6 cable sts in pat. P2tog. Pat to last 10 sts. P2tog. Work 6 cable sts in pat. P2.

**2nd row:** K2. P6. Sl1. K1. pss0. Pat to last 10 sts. K2tog. P6. K2.

Rep last 2 rows 13 (11-12-12) times more. 53 (61-66-66) sts.

**Next row:** P2. Work 6 cable sts in pat. P2tog. Pat to last 10 sts. P2tog. Work 6 cable sts in pat. P2.

**2nd row:** K2. P6. K1. Pat to last 9 sts. K1. P6. K2.

Rep last 2 rows 17 (21-22-22) times more. Leave rem 17 (17-20-20) sts on a st holder.\*\*\*\*

### LEFT SLEEVE

Work from \*\*\* to \*\*\* as given for Right Sleeve.

Proceed in pat as follows:

**1st row:** (RS). \*Work 1st row Panel Pat C. Rep from \* to last 3 sts. P3.

**2nd row:** K3. \*Work 2nd row of Panel Pat C. Rep from \* to end of row.

Panel Pat C is now in position.

Work from \*\*\*\* to \*\*\*\* as given for Right Sleeve.

### FINISHING

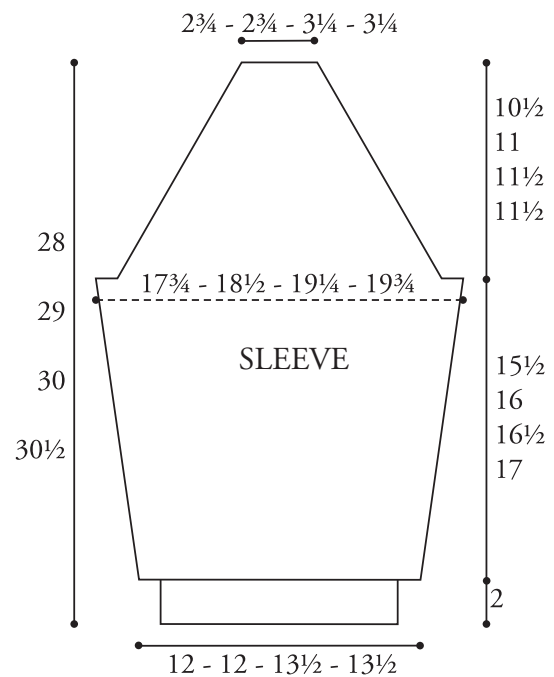
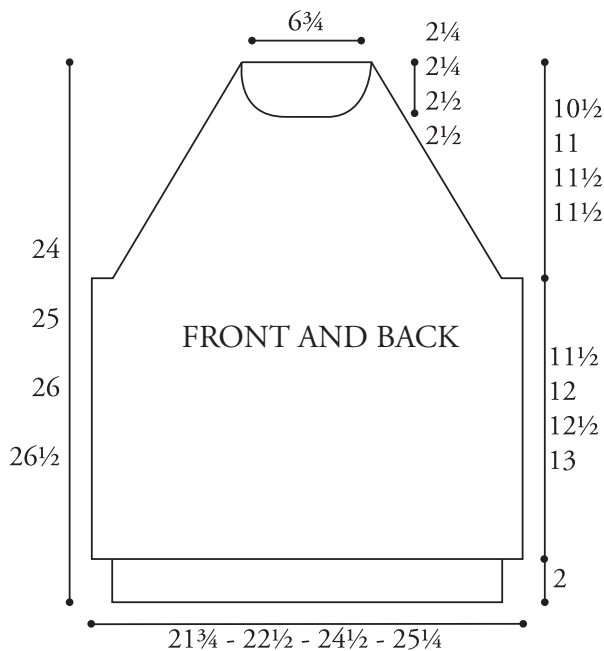
Pin garment pieces to measurements. Cover with a damp cloth leaving to dry. Sew raglan seams leaving left back raglan seam open.

**Neckband:** With RS of work facing and smaller needles, K17 (17-20-20) from left sleeve st holder dec 8 sts evenly. Pick up and knit 15 (15-16-16) sts down left front neck edge. Rib across 22 sts from front st holder and keep

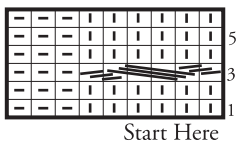
cont of rib pat throughout neckband. Pick up and knit 15 (15-16-16) sts up right front neck edge. K17 (17-20-20) sts from right sleeve st holder dec 8 sts evenly. K42 from back st holder, dec 8 sts evenly across. 104 (104-112-112) sts.

**1st row:** (WS). \*K2. P2. Rep from \* to end of row.

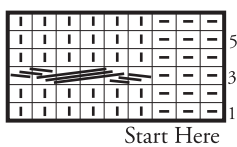
Rep last row until work from beg measures 7 ins [18 cm] for Her Version or 3 ins [8 cm] for His Version, ending with RS facing for next row. Cast off in ribbing. Sew left back raglan and neckband seam, reversing seam on Her Version for fold-back. Sew side and sleeve seams. Fold neckband in half to WS and sew loosely in position for His Version.



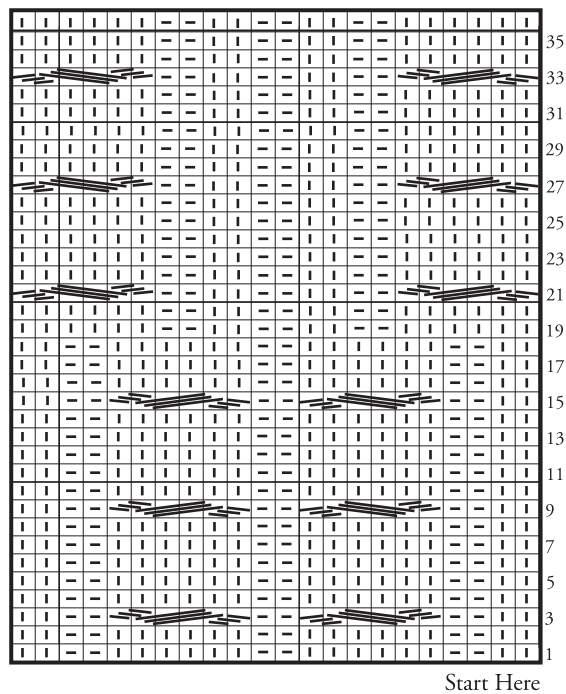
### PANEL PAT A




### PANEL PAT C




### PANEL PAT B



### Key

 = Knit on RS rows and purl on WS rows.

 = Purl on RS rows and knit on WS rows.

 = C6B

 = C6F

 Patons®

... a part of your life.

P.O. Box 40, Listowel ON N4W 3H3