



FAIR ISLE PLAID CARDIGAN

SIZES

Bust measurement

Small	30-32	ins [76-81	cm]
Medium	34-36	ins [86-91	cm]
Large	38-40	ins [97-102	cm]
Extra-Large	42-44	ins [107-112	cm]

Finished bust

Small	37	ins [94	cm]
Medium	41	ins [104	cm]
Large	45	ins [114.5	cm]
Extra-Large	49	ins [124.5	cm]

MATERIALS

Patons Astra (50 g/1.75 oz)

Size S M L XL

Main Color (MC) (Blue)

3 3 4 5 balls

Contrast A (White)

1 1 2 2 balls

Contrast B (Lt Blue)

2 2 2 2 balls

Contrast C (Lilac)

2 2 2 2 balls

Contrast D (Dk Blue)

2 2 2 2 balls

Contrast E (Dark Purple)

2 2 2 2 balls

Sizes 3.5 mm (U.S. 4) and 4 mm (U.S. 6) knitting needles **or size needed to obtain tension.** 7 buttons.

TENSION

22 sts and 30 rows = 4 ins [10 cm] with larger needles in stocking st.

INSTRUCTIONS

The instructions are written for smallest size. If changes are necessary for larger sizes the instructions will be written thus ().

Note: When working from charts carry yarn not in use loosely across WS of work, but never over more than 5 sts. When it must pass over more than 5 sts, weave it over and under color in use on next st or at center of sts it passes over.

BACK

With MC and smaller needles, cast on 108 (120-132-144) sts.

Knit 5 rows (garter st), noting that first row is WS.

Change to larger needles and proceed as follows:

Work Chart I in stocking st to end of chart, reading **knit** rows from **right** to left and **purl** rows from **left** to right, noting the 12 st rep will be worked 9 (10-11-12) times.

Next row: (WS). With E, purl.

Proceed in ribbing pat as follows:

1st row: (RS). With A, K3 (0-6-3). *P3. K6. Rep from * to last 6 (3-0-6) sts. P3 (3-0-3). K3 (0-0-3).

2nd row: With E, P3 (0-0-3). K3 (3-0-3). *P6. K3. Rep from * to last 3 (0-6-3) sts. P3 (0-6-3).

These 2 rows establish (K6. P3) ribbing pat.

Cont in (K6. P3) ribbing pat as follows:

With D, work 4 rows.

With C, work 2 rows.

With B, work 2 rows.

With MC, work 2 rows.

With E, work 1 row.

With A, work 1 row.

With D, work 4 rows.

With C, work 4 rows.

With E, work 1 row.

With MC, work 3 rows.

With B, work 2 rows.

With A, work 1 row.

With E, work 1 row.

Last 28 rows form stripe ribbing pat.

Cont in stripe ribbing pat until work from beg measures 13½ ins [34.5 cm], ending with RS facing for next row.



ABBREVIATIONS: www.patonsyarns.com/glossary

Armhole shaping: Keeping cont of pat, cast off 6 sts beg next 2 rows. 96 (108-120-132) sts.

Cont even in pat until armhole measures 8 (8½-9-9½) ins [20.5 (21.5-23-24) cm], ending with RS facing for next row.

Shoulder shaping: Cast off 9 (11-12-14) sts beg next 4 rows. Cast off 9 (11-13-15) sts beg next 2 rows. Leave rem 42 (42-46-46) sts on a spare needle.

RIGHT FRONT

**With MC and smaller needles, cast on 54 (60-66-72) sts. Knit 5 rows, noting first row is WS.

Change to larger needles and proceed as follows:

Work Chart II in stocking st to end of chart, reading **knit** rows from **right** to left and **purl** rows from **left** to right, noting the 12 st rep will be worked 4 (5-5-6) times.

Next row: (WS). With E, purl.**

Proceed in ribbing pat as follows:

1st row: (RS). With A, K3. *P3. K6. Rep from * to last 6 (3-0-6) sts. P3 (3-0-3). K3 (0-0-3).

2nd row: With E, P3 (0-0-3). K3 (3-0-3). *P6. K3. Rep from * to last 3 sts. P3.

These 2 rows form (K6. P3) rib pat. Cont in stripe ribbing pat as given for Back until work from beg measures 13½ ins [34.5 cm], ending with **WS** facing for next row.

Armhole shaping: Next row: Cast off 6 sts. Pat to end of row. 48 (54-60-66) sts. Cont even in pat until armhole measures 6 (6½-7-7½) ins [15 (16.5-18-19) cm], ending with RS facing for next row.

Neck shaping: Next row: Cast off 7 (7-9-9) sts. Pat to end of row.

Keeping cont of pat, dec 1 st at neck edge on next 14 rows. 27 (33-37-43) sts. Cont even in pat until work from beg measures same length as Back to beg of shoulder shaping ending with **WS** facing for next row.

Shoulder shaping: Cast off 9 (11-12-14) sts beg next and following alt row. Work 1 row even in pat. Cast off rem 9 (11-13-15) sts.

LEFT FRONT

Work from ** to ** as given for Right Front.

Proceed in ribbing as follows:

1st row: (RS). With A, K3 (0-0-3). P3 (3-0-3). *K6. P3. Rep from * to last 3 sts. K3.

2nd row: With E, P3. *K3. P6. Rep from * to last 6 (3-0-6) sts. K3 (3-0-3). P3 (0-0-3).

These 2 rows establish (K6. P3) rib pat. Cont in stripe ribbing pat as given for Back, until work from beg measures 13½ ins [34.5 cm], ending with RS facing for next row.

Armhole shaping: Next row: Cast off 6 sts. Pat to end of row. 48 (54-60-66) sts.

Cont even in pat until armhole measures 6 (6½-7-7½) ins [15 (16.5-18-19) cm], ending with **WS** facing for next row.

Neck shaping: Next row: Cast off 7 (7-9-9) sts. Pat to end of row.

Keeping cont of pat, dec 1 st at neck edge on next 14 rows. 27 (33-37-43) sts.

Cont even in pat until work from beg measures same length as Back to beg of shoulder shaping ending with RS facing for next row.

Shoulder shaping: Cast off 9 (11-12-14) sts beg next and following alt row. Work 1 row even in pat. Cast off rem 9 (11-13-15) sts.

SLEEVES

With MC and smaller needles, cast on 60 sts. Work 5 rows garter st, noting that first row is WS.

Change to larger needles and proceed as follows:

Work Chart III in stocking st to end of chart, reading **knit** rows from **right** to left and **purl** rows from **left** to right, working 12 st rep 5 times and noting side incs on rows 3, 5 and 7, then every following 6th row from previous inc until there are 78 sts. .

Next row: (WS). With E, purl, inc 3 sts evenly across. 81 sts.

Proceed in ribbing pat as follows:

1st row: (RS). With A, K3. P3. *K6. P3. Rep from * to last 3 sts. K3.

2nd row: With E, P3. K3. *P6. K3. Rep from * to last 3 sts. P3.

These 2 rows establish (K6. P3) rib pat.

Cont in stripe ribbing pat as given for Back, **AT THE SAME TIME**, inc 1 st at each end of needle on every 6th row from previous inc to 95 (101-107-113) sts, taking incs into ribbing pat.

Cont even in pat until work from beg measures 19 (20-21-21½) ins [48 (51-53.5-54.5) cm], ending with RS facing for next row. Cast off.

FINISHING

Pin garment pieces to measurements. Cover with a damp cloth leaving to dry.

Neckband: Sew shoulder seams. With RS of work facing, smaller needles and MC, pick up and knit 25 (25-28-28) sts up Right Front neck edge. K42 (42-46-46) from Back st holder. Pick up and knit 25 (25-28-28) sts down Left Front neck edge. 92 (92-102-102) sts. Knit 4 rows. Cast off knitwise (WS).

Button Band: With RS of work facing, smaller needles and E, pick up and knit 114 (120-126-132) sts along left front edge, including side edge of neckband. Beg with row 2, work Chart II in stocking st until row 7 of chart is complete, reading **purl** rows from **left** to right and **knit** rows from **right** to left, noting the 12 st rep will be worked 9 (10-10-11) times.

Next row: (WS). With E, purl, dec 6 sts evenly across. 108 (114-120-126) sts.

With MC, work 8 rows stocking st. Cast off.

Buttonhole Band: With RS of work facing, smaller needles and E, pick up and knit 114 (120-126-132) sts along Right Front edge, including side edge of neckband.

Work rows 2 and 3 of Chart II.

Next row: (WS). Working row 4 of Chart, pat across 5 sts.

*Cast off 2 sts. Pat across 15 (16-17-18) sts (including st on needle after cast off). Rep from * 5 times more. Cast off 2 sts. Work chart to end of row.

Next row: Working row 5 of chart, knit casting on 2 sts over cast off sts.

Work rows 6 and 7 of Chart II.

Next row: (WS). With E, purl dec 6 sts evenly across. 108 (114-120-126) sts.

With MC, work 3 rows stocking st.

Next row: (WS). P5. *Cast off 2 sts. P14 (15-16-17) (including st on needle after cast off). Rep from * 5 times more. Cast off 2 sts. Purl to end of row.

Next row: Knit, casting on 2 sts over cast off sts.

Work a further 3 rows stocking st.

Cast off.

Sew side and sleeve seams. Sew in sleeves. Fold button and buttonhole bands in half and sew in position. Stitch around buttonhole openings. Sew buttons to correspond to buttonholes.

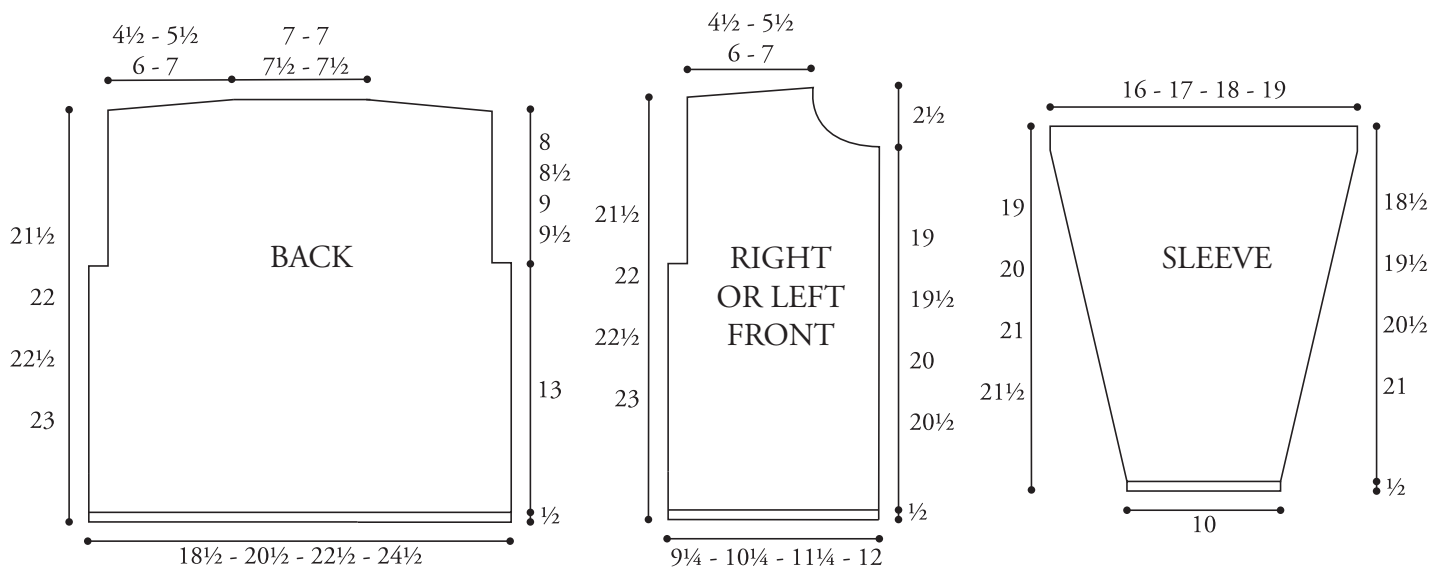


CHART III

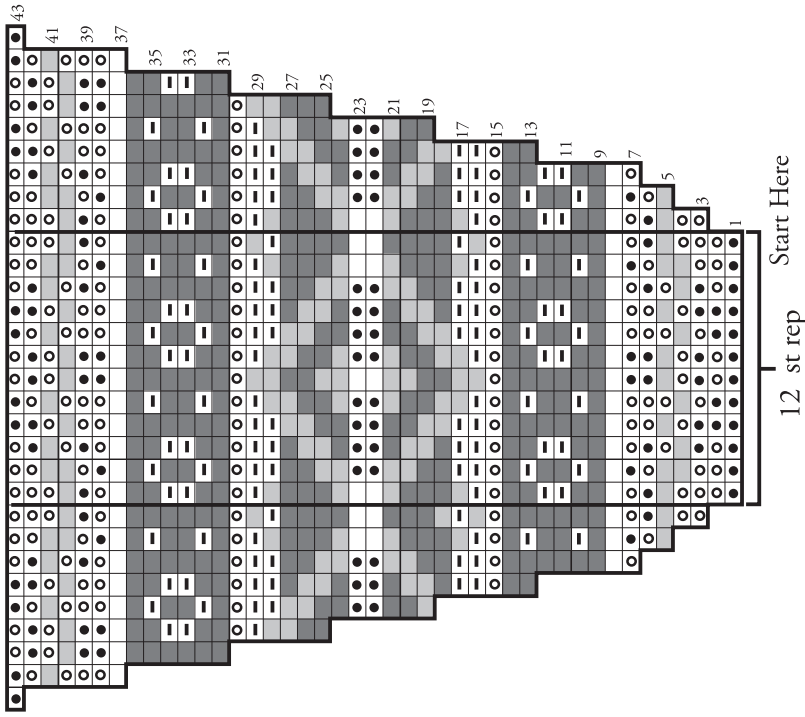


CHART II

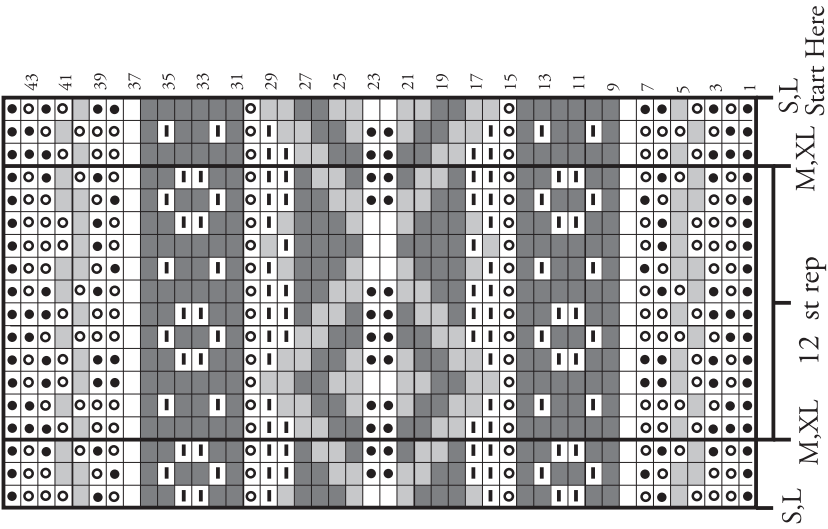
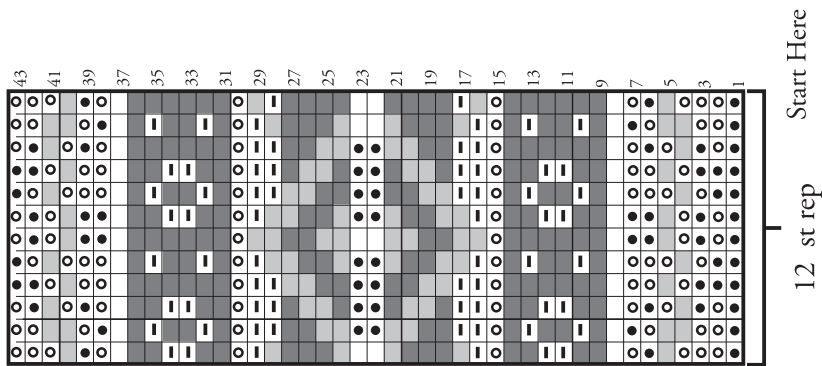








CHART I



Key

-  = MC
-  = Contrast A
-  = Contrast B
-  = Contrast C
-  = Contrast D
-  = Contrast E