



## BOLD DIAMONDS

### SIZES

#### Bust measurement

Small	30-32 ins [76-81 cm ]
Medium	34-36 ins [86-91 cm ]
Large	38-40 ins [97-102cm ]
Extra-Large	42-44 ins [107-112cm]

#### Finished bust

Small	39 ins [99 cm ]
Medium	43½ ins [110.5 cm ]
Large	48 ins [122 cm ]
Extra-Large	52 ins [132 cm ]

### MATERIALS

Patons Astra (50 g/1.75 oz)

Size S M L XL

Main Color (MC) (Blue)

9 9 10 11 balls

Contrast A (White)

3 3 3 3 balls

Contrast B (Light Beige)

2 2 2 2 balls

Contrast C (Deep Navy)

2 2 2 2 balls

Sizes 3.75 mm (U.S. 5) and 4 mm (U.S. 6) knitting needles **or size needed to obtain tension.** 2 st holders.

### TENSION

22 sts and 30 rows = 4 ins [10 cm] with larger needles in stocking st.

### INSTRUCTIONS

*The instructions are written for smallest size. If changes are necessary for larger sizes the instructions will be written thus ( ).*

**Note:** When working Chart I, carry yarn not in use loosely across WS of work but never over more than 5 sts. When it must pass over more than 5 sts, weave it over and under color in use on next st or at center point of sts it passes over. The colors are never twisted around one another.

When working Chart II wind small balls of the colors to be used, one for each separate area of color in the design. Start new colors at appropriate points. To change colors, twist the two colors around each other where they meet, on WS, to avoid a hole.

#### FRONT

\*\*With MC and smaller needles, cast on 108 (120-132-144) sts.

Work 1 inch [2.5 cm] in stocking st ending with RS facing for next row.

**Next row:** With B, knit.

**Next row:** (Fold line). With B, knit.

With MC, work 2 rows in stocking st, inc 10 (10-10-12) sts evenly across last row. 118 (130-142-156) sts.

Work rows 1 to 6 of Chart I reading **knit** rows from **right** to left and **purl** rows from **left** to right noting the 16 sts rep will be worked 7 (8-8-9) times.

Change to larger needles and cont working Chart I to end of chart.

**Next row:** With MC, knit, dec 11 (11-11-13) sts evenly across. 107 (119-131-143) sts.

**Next row:** Purl.

Work Chart II, reading **knit** rows from **right** to left and **purl** rows from **left** to right until row 72 (76-80-84) of chart is complete.

**Armhole shaping:** Keeping cont of Chart II, cast off 3 (4-4-5) sts beg next 2 rows. 101 (111-123-133) sts.

**Next row:** (RS). With MC, K2. Sl1. K1. pssso. Work appropriate row of Chart II to last 4 sts. With MC, K2tog. K2.

**Next row:** With MC, P2. P2tog. Work appropriate row of Chart XIV to last 4 sts. With MC, P2togtbl. P2.

Rep last 2 rows 4 times more. 81 (91-103-113) sts.



ABBREVIATIONS: [www.patonsyarns.com/glossary](http://www.patonsyarns.com/glossary)



... a part of your life.

P.O. Box 40, Listowel ON N4W 3H3

Cont working Chart II until row 120 of chart is complete.\*\*

Cont even until armhole measures 6½ (6½- 6½-6¾) ins [16 (16.5-16.5-17) cm] ending with RS facing for next row.

**Neck shaping: Next row:** (RS). With MC, K28 (32-37-41). K2tog. K2. (neck edge). **Turn.** Leave rem sts on a spare needle.

**Next row:** P2. P2tog. Purl to end of row.

**Next row:** Knit to last 4 sts. K2tog. K2. Rep last 2 rows twice more.

**Next row:** Purl.

**Next row:** Knit to last 4 sts. K2tog. K2. Rep last 2 rows to 23 (26-30-34) sts.

Cont even until armhole measures 9½ (9¾-10-10½) ins [24 (25-25.5-26.5) cm] ending with RS facing for next row.

**Shoulder shaping:** Cast off 8 (9-10-11) sts beg next and following alt row. Work 1 row even. Cast off rem 7 (8-10-12) sts.

With RS of work facing, slip next 17 (19-21-23) sts from spare needle onto a st holder. Join MC to rem sts and knit to end of row.

**Next row:** (WS). Purl to last 4 sts. P2togtbl. P2.

**Next row:** K2. Sl1. K1. pss0. Knit to end of row.

Rep last 2 rows twice more.

**Next row:** Purl.

**Next row:** K2. Sl1. K1. pss0. Knit to end of row.

Rep last 2 rows to 23 (26-30-34) sts.

Cont even until armhole measures 9½ (9¾-10-10½) ins [24 (25-25.5-26.5) cm] ending with WS facing for next row.

**Shoulder shaping:** Cast off 8 (9-10-11) sts beg next and following alt row. Work 1 row even. Cast off rem 7 (8-10-12) sts.

## BACK

Work from \*\* to \*\* as given for Front.

Cont even until armhole measures 9½ (9¾-10-10½) ins [24 (25-25.5-26.5) cm] ending with RS facing for next row.

**Shoulder shaping:** Cast off 8 (9-10-11) sts beg next 4 rows, then 7 (8-10-12) sts beg following 2 rows. Leave rem 35 (39-43-45) sts on a st holder.

## SLEEVES

With MC and smaller needles, cast on 54 sts.

Work 1 inch [2.5 cm] in stocking st ending with RS facing for next row.

**Next row:** With B, knit.

**Next row:** (Fold line). With B, knit. With MC, work 2 rows in stocking st, inc 4 sts evenly across last row. 58 sts.

Work rows 1 to 6 of Chart I in stocking st noting 16 st rep will be worked 3 times, and inc 1 st each end of needle on 3rd and 5th rows. 62 sts.

Change to larger needles and cont working Chart I to end of chart, inc 1 st each end of needle on following alt rows to 82 (82-94-94) sts, then every 4th row to 94 (94-100-100) sts.

**Next row:** (RS). With MC, knit, dec 5 sts evenly across. 89 (89-95-95) sts.

**Next row:** Purl.

Work Chart II in stocking st, reading **knit** rows from **right** to left and **purl** rows from **left** to right, inc 1 st each end of needle on 5th and following 4th rows to 109 (113-115-119) sts. Place a marker at each end of last row.

**Shape top: Next row:** (RS). K2. Sl1. K1. pss0. Knit to last 4 sts. K2tog. K2. **Next row:** P2. P2tog. Purl to last 4 sts. P2togtbl. P2.

Rep last 2 rows 4 times more ending with RS facing for next row. 87 (91-93-97) sts. Cast off.

Place markers on side edges of Sleeves ½ (¾-¾-1) inch [1.5 (2-2-2.5) cm] down from markers.

## FINISHING

Pin garment pieces to measurements. Cover with a damp cloth leaving to dry.

**Neckband:** Sew right shoulder seam. With RS of work facing, MC and smaller needles, pick up and knit 24 (25-26-26) sts down left front neck edge. K17 (19-21-23) from front st holder. Pick up and knit 24 (25-26-26) sts up right front neck edge. K35 (39-43-45) from back st holder. 100 (108-116-120) sts.

Purl 1 row.

Work rows 1 to 4 of Chart III noting the 4 st rep will be worked 25 (27-29-30) times.

With MC, beg with a knit row, work 2 rows in stocking st.

**Next row:** With B, knit.

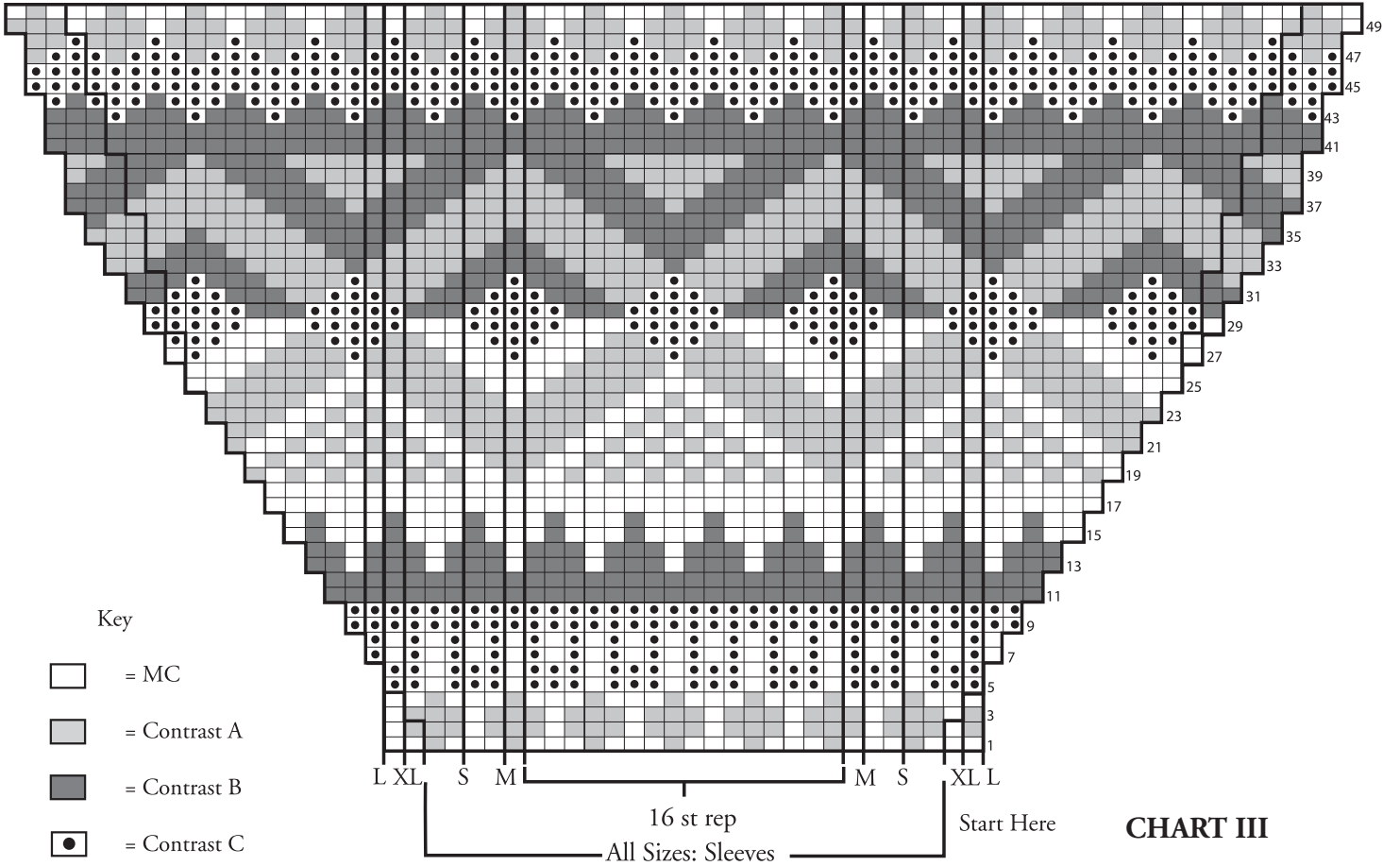
**Next row:** (Fold line). With B, knit.

With MC, beg with a knit row, work 8 rows in stocking st.

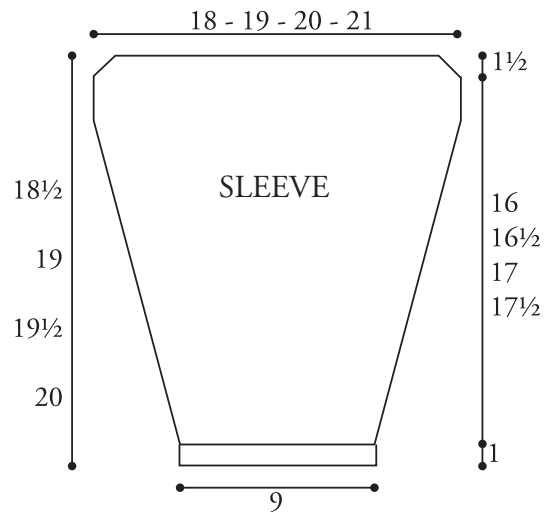
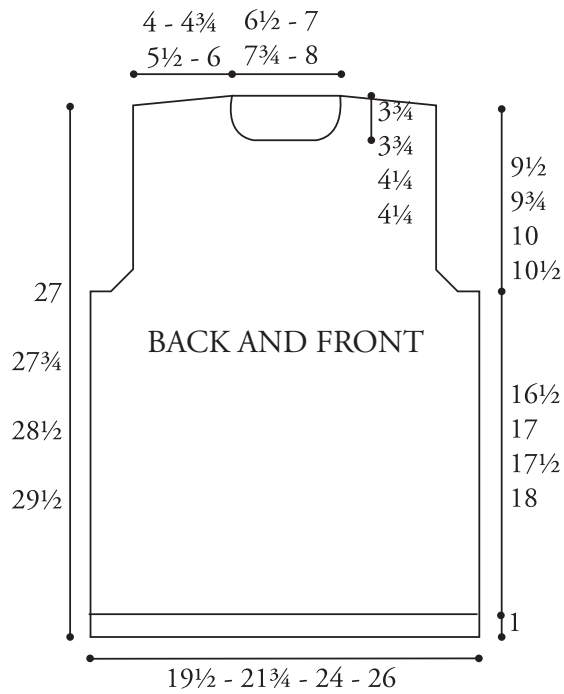
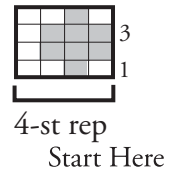
Cast off loosely.

Sew left shoulder and neckband seam. Sew in sleeves placing rows between 2 sets of markers along cast off sts at armhole of Front and Back. Sew side and sleeve seams. Turn bottom edge, sleeve edges and neckband along fold lines to WS and sew in position.

# CHART I



# CHART III



# CHART II

