

**Patons**  
Classic Wool

**Patons**  
DECOR



## SNOWFLAKE PULLOVER

### SIZES

#### Bust measurement

<b>Small</b>	30-32 ins	[76-81 cm ]
<b>Medium</b>	34-36 ins	[86-91 cm ]
<b>Large</b>	38-40 ins	[97-102cm ]

#### Finished bust

<b>Small</b>	40 ins	[101.5 cm ]
<b>Medium</b>	42 ins	[106.5 cm ]
<b>Large</b>	45 ins	[114.5 cm ]

### TENSION

20 sts and 26 rows = 4 ins [10 cm]  
with larger needles in stocking st.

### MATERIALS

**Patons Classic Wool** (100 g/3.5 oz) or **Patons Decor** (100 g/3.5 oz)

**Size S M L**

#### LONG VERSION

**Main Color (MC)**  
6 6 7 balls

**Contrast A**  
1 1 2 ball(s)

#### SHORT VERSION

**Main Color (MC)**  
5 6 6 balls

**Contrast A**  
1 1 2 ball(s)

Sizes 4 mm (U.S. 6) and 4.5 mm (U.S. 7) knitting needles **or size needed to obtain tension.**  
Two st holders.

### ABBREVIATIONS

**M1P** = make 1 st by picking up horizontal loop lying before next st and purling into back of loop.

### INSTRUCTIONS

*The instructions are written for smallest size. If changes are necessary for larger sizes the instructions will be written thus ( ).*

**Note:** When working from charts, carry yarn not in use loosely across WS of work but never over more than 5 sts. When it must pass over more than 5 sts, weave it over and under color in use on next st or at centre point of sts it passes over. The colors are never twisted around one another.

### BACK

\*\*With MC and smaller needles, cast on 95 (101-107) sts.

**1st row:** (RS). K1. \*P1. K1. Rep from \* to end of row.

**2nd row:** P1. \*K1. P1. Rep from \* to end of row.

Rep these 2 rows (K1. P1) ribbing for 2 ins [5 cm] ending on a 2nd row and inc 5 sts evenly across last row. 100 (106-112) sts.

Change to larger needles and proceed as follows:

**1st row:** K2 (5-2). (Work 1st row of Chart I in stocking st, reading row from **right** to left) 8 (8-9) times. K2 (5-2).

**2nd row:** P2 (5-2). (Work 2nd row of Chart I in stocking st, reading row from **left** to right) 8 (8-9) times. P2 (5-2).

Chart I is now in position. Rows 1 to 10 of Chart I form pat.

**Long Version only:** Cont in pat until work from beg measures approx 16½ ins [42 cm] ending on a 4th row of chart pat.

**Short Version only:** Cont in pat until work from beg measures approx 11½ ins [29 cm] ending on a 4th row of chart pat.

**Both Versions:** With MC, work 2 rows in stocking st, ending with RS facing for next row.

**Armhole shaping: Next row:** Cast off 5 sts. Knit to end row. 95 (101-107) sts.

**Next row:** Cast off 5 sts. With MC, P5 (8-7) (including st after cast off). \*M1P. P9 (9-10). Rep from \* to last 4 (10-14) sts. P4 (10-14). 99 (105-111) sts.



ABBREVIATIONS: [www.patonsyarns.com/glossary](http://www.patonsyarns.com/glossary)

Work Chart II in stocking st to end of chart reading **knit** rows from **right** to left and **purl** rows from **left** to right.

**Next row:** (WS). With MC, purl dec 7 sts evenly across. 92 (98-104) sts.

With MC, work 4 more rows in stocking st, ending with a WS row.

Proceed as follows:

**1st row:** K4 (1-4). (Work 1st row of Chart II in stocking st reading row from **right** to left) 7 (8-8) times. K4 (1-4).

**2nd row:** P4 (1-4). (Work 2nd row of Chart II in stocking st reading row from **left** to right) 7 (8-8) times. P4 (1-4).

Chart II is now in position. Rows 1 to 10 of Chart II form pat.\*\*

Cont in chart pat until armhole measures 9 (9½-10) ins [23 (24-25.5) cm] ending with RS facing for next row.

**Shoulder shaping:** Cast off 10 (11-11) sts beg next 4 rows, then 10 (10-12) sts beg following 2 rows. Leave rem 32 (34-36) sts on a st holder.

## FRONT

Work from \*\* to \*\* as given for Back.

Cont in chart pat until armhole measures 6¼ (6¾-7¼) ins [16 (17-18.5) cm] ending with a WS row.

**Neck shaping: Next row:** Pat across 35 (37-39) sts (neck edge).

**Turn.** Leave rem sts on a spare needle.

Work 1 row even in pat.

Dec 1 st at neck edge on next and following alt rows 4 times. 30 (32-34) sts.

Cont even in pat until armhole measures 9 (9½-10) ins [23 (24-25.5) cm] ending with a WS row.

**Shoulder shaping:** Cast off 10 (11-11) sts beg next and following alt row. Work 1 row even. Cast off rem 10 (10-12) sts.

With RS of work facing slip next 22 (24-26) sts from spare needle onto a st holder. Join yarn to rem sts and pat to end of row.

Work 1 row even in pat.

Dec 1 st at neck edge on next and following alt rows 4 times. 30 (32-34) sts.

Cont even in pat until armhole measures 9 (9½-10) ins [23 (24-25.5) cm] ending with **WS** facing for next row.

**Shoulder shaping:** Cast off 10 (11-12) sts beg next and following alt row. Work 1 row even. Cast off rem 10 (10-12) sts.

## SLEEVES

With MC and smaller needles cast on 51 (51-55) sts. Work 2 ins [5 cm] in (K1. P1) ribbing as given for Back, ending on a 2nd row and inc 5 sts evenly across last row. 56 (56-60) sts.

Change to larger needles and proceed as follows:

**1st row:** (RS). K4 (4-0). (Work 1st row of Chart I in stocking st reading row from **right** to left) 4 (4-5) times. K4 (4-0).

**2nd row:** P4 (4-0). (Work 2nd row of Chart I in stocking st reading row from **left** to right) 4 (4-5) times. P4 (4-0).

Chart I is now in position. Rows 1 to 10 of Chart I form pat.

Cont in pat, working side incs on next and following 6th rows until there are 90 (94-100) sts, taking inc sts into pat.

Cont even in pat until work from beg measures 19 (19¾-20½) ins [48 (50-52) cm] ending with RS facing for next row. Cast off.

Place markers on side edges of Sleeves 6 rows down from cast off edge.

## FINISHING

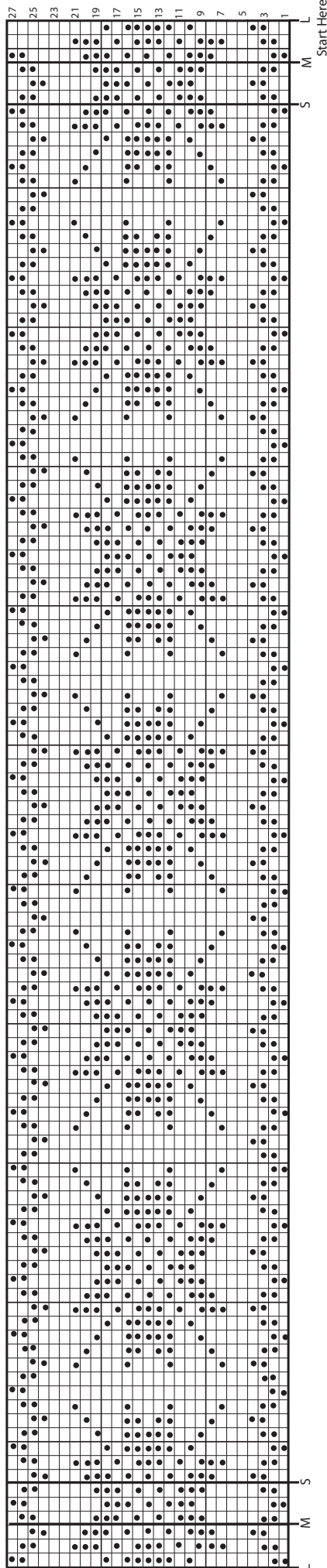
Pin garment pieces to measurements. Cover with damp cloth leaving to dry.

**Neckband:** Sew right shoulder seam. With RS of work facing and smaller needles, pick up and knit 15 sts down left front neck edge. Knit across 22 (24-26) sts from front st holder. Pick up and knit 15 sts up right front neck edge. Knit across 32 (34-36) sts from back st holder, dec 1 st at centre. 83 (87-91) sts.

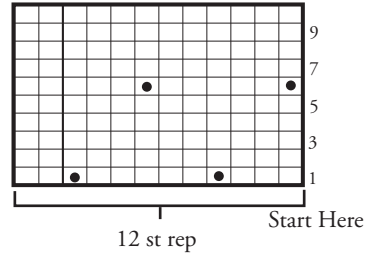
Beg and ending on a 2nd row work 3½ ins [9 cm] in (K1. P1) ribbing as given for Back. Cast off loosely in ribbing. Sew left shoulder and neckband seam.

Sew in sleeves placing rows above markers along cast off sts at armholes to form square armholes. Sew side and sleeve seams.

# CHART II



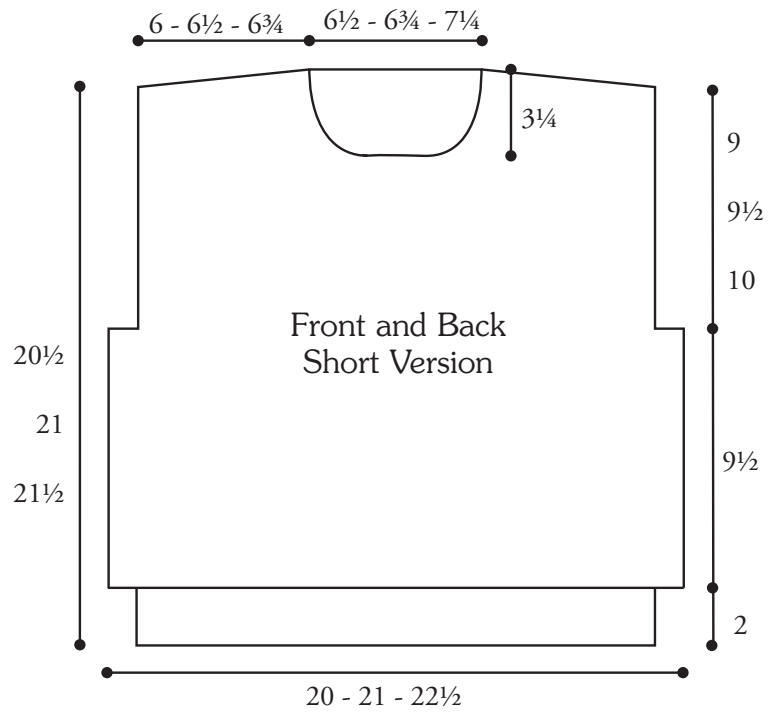
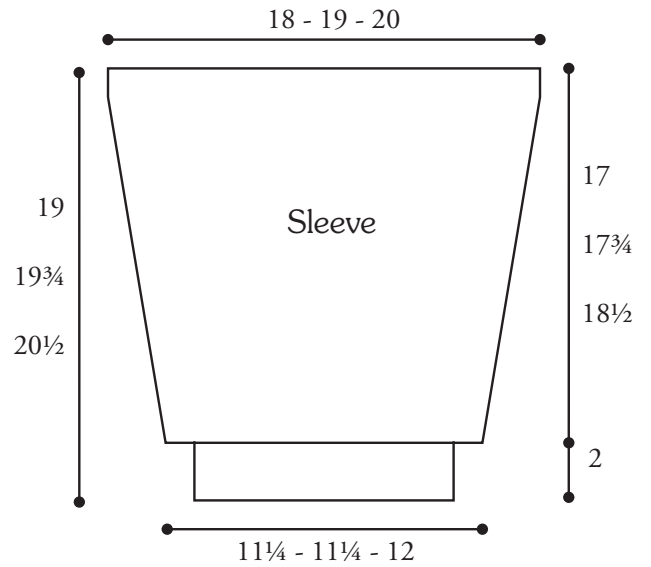
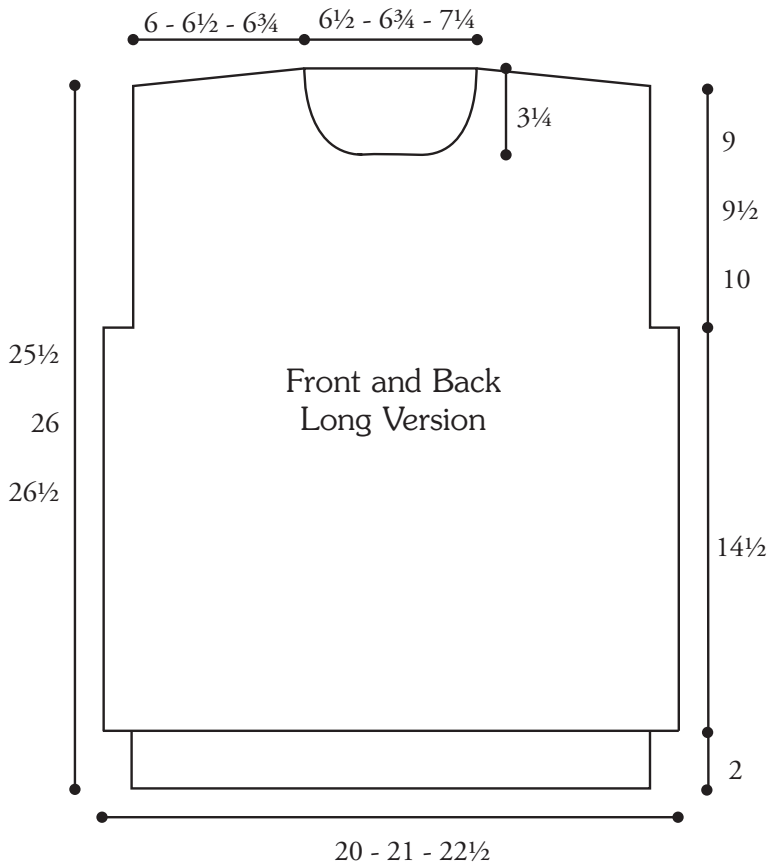
# CHART I



### Key

□ = MC

● = Contrast A



 Patons

*... a part of your life.*

P.O. Box 40, Listowel ON N4W 3H3