

 KNIT | SKILL LEVEL: **INTERMEDIATE**

## ABBREVIATIONS

**Alt** = Alternate(ing)  
**Beg** = Beginning  
**Cont** = Continue(ity)  
**Dec** = Decreasing  
**Inc** = Increasing  
**K** = Knit  
**K2tog** = Knit next 2 stitches together

**P** = Purl  
**Rem** = Remaining  
**Rep** = Repeat  
**RS** = Right side  
**St(s)** = Stitch(es)  
**WS** = Wrong side

## SIZES

### Bust/chest measurement

**S** 30-32" [76-81 cm]  
**M** 34-36" [86-91 cm]  
**L** 38-40" [97-102 cm]  
**XL** 42-44" [107-112 cm]

### Finished bust/chest

**S** 42½" [108 cm]  
**M** 45½" [116.5 cm]  
**L** 49" [124.5 cm]  
**XL** 52" [132 cm]

## GAUGE

20 sts and 26 rows = 4" [10 cm]  
 with larger needles in stocking st.

## INSTRUCTIONS

*The instructions are written for smallest size. If changes are necessary for larger sizes the instructions will be written thus (.).*

**Note:** When working from charts, carry yarn not in use loosely across WS of work but never over more than 5 sts. When it must pass over more than 5 sts, weave it over and under color in use on next st or at centre point of sts it passes over. The colors are never twisted around one another.

## BACK

\*\*With A and smaller needles, cast on **106 (114-122-130)** sts.

## MATERIALS

Patons® Canadiana™ (3.5 oz/100 g; 205 yds/187 m)

| Sizes                | S | M | L | XL |
|----------------------|---|---|---|----|
| Main Color (MC) Gray | 4 | 5 | 5 | 6  |
| Contrast A Blue      | 3 | 3 | 3 | 3  |
| Contrast B Red       | 1 | 1 | 1 | 1  |

Sizes 4 mm (U.S. 6) and 4.5 mm (U.S. 7) knitting needles **or size needed to obtain gauge.** 1 st holder.

**1st row:** (RS). K2. \*P2. K2. Rep from \* to end of row.

**2nd row:** P2. \*K2. P2. Rep from \* to end of row.

Rep these 2 rows (K2. P2) ribbing for 2" [5 cm] ending on a 2nd row and inc 11 sts evenly across last row. **117 (125-133-141)** sts.

Change to larger needles and proceed as follows: Work Chart I in stocking st to end of chart, *reading knit rows from right to left and purl rows from left to right*, noting the 6 st rep will be worked **19 (20-22-23)** times. See Chart I on page 4.

**Next row:** (RS). With MC, knit, dec 11 sts evenly across. **106 (114-122-130)** sts.

Cont in stocking st until work from beg measures **14 (15-16-16½)" [35.5 (38-40.5-42) cm]** ending with RS facing for next row and inc 11 sts evenly across last row. **117 (125-133-141)** sts.

Work Chart II in stocking st to end of chart, *reading knit rows from right to left and purl rows from left to right*. See Chart II on page 4.

**Next row:** (WS). Purl, dec 10 sts evenly across. **107 (115-123-131)** sts.\*\*

With A, cont in stocking st until work from beg measures **25 (26-27-28)" [63.5 (66-68.5-71) cm]** ending with RS facing for next row.

**Shoulder shaping:** Cast off **11 (12-13-15)** sts beg next 4 rows, then **12 (13-14-14)** sts beg following 2 rows. Leave rem **39 (41-43-43)** sts on a st holder.

## FRONT

Work from \*\* to \*\* as given for Back.

**Shape neck: Next row:** With A, K**53 (57-61-65)** (neck edge).

**Turn.** Leave rem sts on a spare needle.

Dec 1 st at neck edge on next **10 (10-12-14)** rows, then on following alt rows until there are **34 (37-40-44)** sts.

Cont even until work from beg measures **25 (26-27-28)" [63.5 (66-68.5-71) cm]** ending with RS facing for next row.

**Shoulder shaping:** Cast off **11 (12-13-15)** sts beg next and following alt row.

Work 1 row even. Cast off rem **12 (13-14-14)** sts.

With RS of work facing slip next st from spare needle onto a safety pin. Join A to rem sts and knit to end of row.

Dec 1 st at neck edge on next **10 (10-12-14)** rows, then on following alt rows until there are **34 (37-40-44)** sts. Cont even in stocking st until work from beg measures **25 (26-27-28)" [63.5 (66-68.5-71) cm]** ending with **WS** facing for next row.

**Shoulder shaping:** Cast off **11 (12-13-15)** sts beg next and following alt row.

Work 1 row even.

Cast off rem **12 (13-14-14)** sts.

## SLEEVES

With A and smaller needles cast on **50 (54-58-62)** sts.

Work 2" [5 cm] in (K2. P2) ribbing as given for Back, ending on a 2nd row and inc **9 (9-11-13)** sts evenly across last row. **59 (63-69-75)** sts.

Change to larger needles and work Chart III in stocking st to end of chart *reading knit rows from right to left and purl rows from left to right*, working 6 st rep **9 (10-11-12)** times and noting side incs on 3rd and following 4th rows. **63 (67-73-79)** sts. See Chart III on page 4.

**Next row:** (RS). With MC, inc 1 st in first st. K**10 (9-10-11)**. [K2tog. K**8 (9-10-11)**] 5 times. Inc 1 st in next st. K**1. 60 (64-70-76)** sts.

Cont in stocking st, inc 1 st each end of needle on every 4th row from previous inc until there are **88 (94-102-110)** sts.

**Next row:** (WS). Purl, inc 7 sts evenly across. **95 (101-109-117)** sts.

Work Chart II in stocking st to end of chart, noting side incs. **105 (111-115-123)** sts.

**Next row:** (WS). With A, purl dec 8 sts evenly across. **97 (103-107-115)** sts.

With A, cont even until work from beg measures **18½ (19-19½-20)" [47 (48-49.5-51) cm]** ending with a WS row. Cast off.

## FINISHING

Pin garment pieces to measurements. Cover with a damp cloth leaving to dry.

**Neckband:** Sew right shoulder seam. With RS work facing, smaller needles and A, pick up and knit **46 (46-46-50)** sts down left front neck edge. K1 from safety pin and mark as centre st. Pick up and knit **46 (46-46-50)** sts up right front neck edge. Knit across **39 (41-43-43)** sts from back st holder dec **1 (3-1-1)** st(s) evenly across. **131 (131-135-143)** sts.

**1st row:** (WS). P2. \*K2. P2. Rep from \* to centre 5 sts. P2tog. P1. P2togtbl. Rib to end of row.

**2nd row:** Rib to centre 5 sts. P2tog. K1. P2togtbl. Rib to end of row.

**3rd row:** Rib to centre 5 sts. Sl1. K1. pss0. P1. K2tog. Rib to end of row.

**4th row:** Rib to centre 5 sts. Sl1. K1. pss0. K1. K2tog. Rib to end of row.

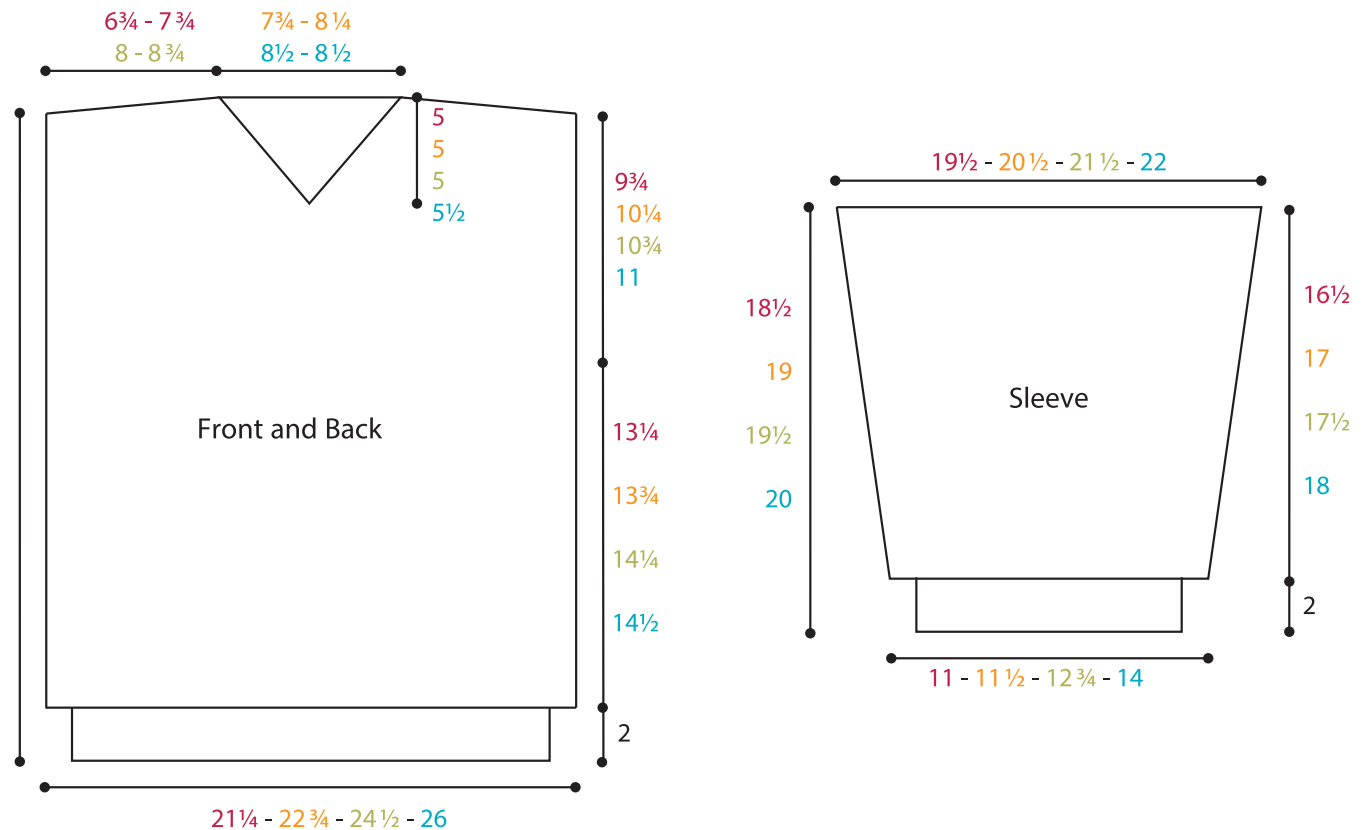
**5th row:** As 1st row.

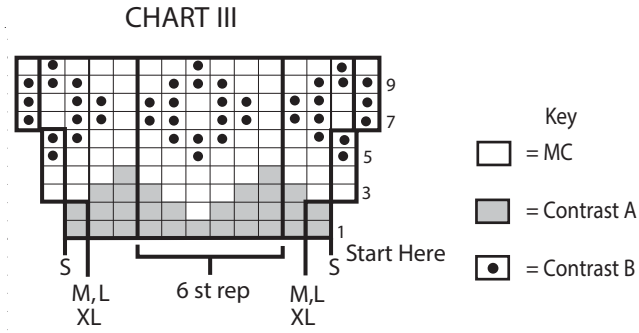
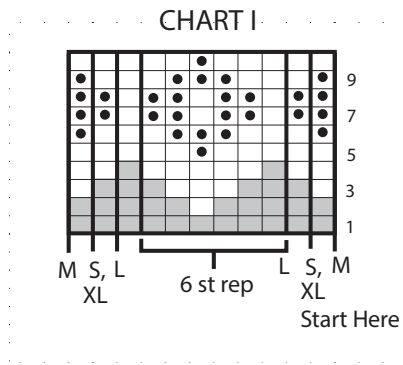
**6th row:** As 2nd row.

**7th row:** As 3rd row.

Cast off. Sew left shoulder and neckband seam.

Place markers on Front and Back side edges **9¾ (10¼-10¾-11)** " [**25 (26-27.5-28)** cm] down from shoulder seams. Sew in sleeves between markers. Sew side and sleeve seams.





### CHART II

