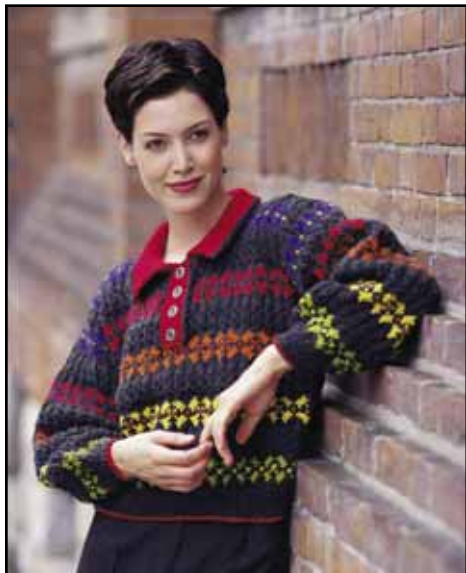


Patons
Classic Wool

Patons
DECOR



COLORFUL POLO NECK

SIZES

Bust measurement

Small	30-32 ins	[76-81 cm]
Medium	34-36 ins	[86-91 cm]
Large	38-40 ins	[97-102 cm]

Finished bust

Small	37 ins	[94 cm]
Medium	40 ins	[102 cm]
Large	44 ins	[112 cm]

TENSION

20 sts and 26 rows = 4 ins [10 cm] with larger needles in stocking st

MATERIALS

Patons Classic Wool (100 g/3.5 oz)
or **Patons Decor** (100 g/3.5 oz)

Size	S	M	L	
Main Color (MC) (Dk Grey)	5	5	6	balls
Contrast A (Green)	1	1	1	ball
Contrast B (Yellow)	1	1	1	ball
Contrast C (Orange)	1	1	1	ball
Contrast D (Red)	1	1	1	ball
Contrast E (Purple)	1	1	1	ball

Sizes 3.75 mm (U.S. 5) and 4.5 mm (U.S. 7) knitting needles **or size needed to obtain tension**. 3 stitch holders. 4 buttons.

ABBREVIATIONS

p2sso = pass slipped st over last 2 knit sts.
yb = take yarn to back of work.
yf = take yarn to front of work.

INSTRUCTIONS

Chart and Texture Pat [worked over 99 (107-115) sts]

Note: St number varies throughout pat. Always count lower st number when working shaping in pat.

1st to 14th rows: **Work rows 1 to 14 of Chart I in stocking st, reading **knit** rows from **right** to left and **purl** rows from **left** to right, using Contrast A for Color 1 and Contrast B for Color 2.

15th row: (RS). With MC, P2. *K1. yfwd. K1. P2. Rep from * to last st. P1. 123 (133-143) sts.

16th row: K3. P3. *K2. P3. Rep from * to last 2 sts. K2.

17th row: P2. *Sl1. K2. p2sso. P2. Rep from * to last st. P1. 99 (107-115) sts.

18th row: K3. *P2. K2. Rep from * to end of row.

19th to 22nd rows: Rep last 4 rows once more. **

23rd to 44th rows: Rep from ** to ** once more using Contrast B for Color 1 and Contrast C for Color 2 in Chart I.

45th to 66th rows: Rep from ** to ** once more using Contrast C for Color 1 and Contrast D for Color 2 in Chart I.

67th to 88th rows: Rep from ** to ** once more using Contrast D for Color 1 and Contrast E for Color 2 in Chart I.

89th to 110th rows: Rep from ** to ** once more using Contrast E for Color 1 and Contrast A for Color 2 in Chart I. These 110 rows form Chart and Texture Pat.

FRONT

***With D and smaller needles, cast on 97 (105-113) sts. Break D.

1st row: (RS). With MC, K1. *P1. K1. Rep from * to end of row.

2nd row: P1. *K1. P1. Rep from * to end of row.

Rep these 2 rows (K1. P1) ribbing for 2 ins [5 cm] ending with RS facing for next row and inc 2 sts evenly across last row. 99 (107-115) sts.

Change to larger needles and proceed in Chart and Texture Pat until work from beg measures 10½ ins [26.5 cm], ending with RS facing for next row.***



ABBREVIATIONS: www.patonsyarns.com/glossary

Armhole shaping: Next row: Keeping cont of pat, cast off 6 (7-8) sts. Pat across next 48 (51-54) sts (including st on needle after cast off). **Turn.** Leave rem sts on a spare needle.

Placket opening: Next row: Cast off 9 sts. Pat to end of row. 39 (42-45) sts. Cont even in pat until work from beg measures 17½ (17¾-18¼) ins [44.5 (45-46.5) cm], ending with RS facing for next row.

Shape neck: Next row: Pat to last 6 (7-7) sts (neck edge). **Turn.** Slip last 6 (7-7) sts onto a st holder.

Dec 1 st at neck edge on next 4 rows, then on following alt rows 3 (3-4) times. 26 (28-30) sts.

Cont even in pat until work from beg measures 20 (20½-21) ins [51 (52-53.5) cm], ending with RS facing for next row.

Shoulder shaping: Next row: Cast off 8 (9-10) sts beg next and following alt row.

Work 1 row even. Cast off rem 10 sts. With RS of work facing, join yarn to rem sts on spare needle. Pat to end of row.

Armhole shaping: Next row: Cast off 6 (7-8) sts. Pat to end of row. 39 (42-45) sts.

Cont even in pat until work from beg measures 17½ (17¾-18¼) ins [44.5 (45-46.5) cm], ending with **WS** facing for next row.

Shape neck: Next row: Pat to last 6 (7-7) sts (neck edge). **Turn.** Slip last 6 (7-7) sts onto a st holder.

Dec 1 st at neck edge on next 4 rows, then on following alt rows 3 (3-4) times. 26 (28-30) sts.

Cont even in pat until work from beg measures 20 (20½-21) ins [51 (52-53.5) cm], ending with **WS** facing for next row.

Shoulder shaping: Next row: Cast off 8 (9-10) sts beg next and following alt row.

Work 1 row even. Cast off rem 10 sts.

BACK

Work from *** to *** as given for Front.

Armhole shaping: Cast off 6 (7-8) sts beg next 2 rows. 87 (93-99) sts.

Cont in pat until work from beg measures same length as Front to beg of shoulder shaping, ending with RS facing for next row.

Shoulder shaping: Cast off 8 (9-10) sts beg next 4 rows, then cast off 10 sts beg following 2 rows. Leave rem 35 (37-39) sts on a st holder.

SLEEVES

With D and smaller needles, cast on 49 (51-55) sts. Break D.

With MC, work 2 ins [5 cm] in (K1. P1) ribbing as given for Front, ending with RS facing for next row and inc 16 (18-18) sts evenly across last row. 65 (69-73) sts.

Change to larger needles and proceed as follows:

1st to 14th rows: Work rows 1 to 14 of Chart I in stocking st, reading **knit** rows from **right** to left and **purl** rows from **left** to right, using Contrast A for

Color 1 and Contrast B for Color 2, noting side incs on 5th and following 4th rows. 71 (75-79) sts.

15th row: (RS). P2. *K1. yfwd. K1. P2. Rep from * to last st. K1. 88 (93-98) sts.

16th row: P1. K2. *P3. K2. Rep from * to end of row.

17th row: Inc 1 st in first st. P1. *Sl1. K2. p2sso. P2. Rep from * to last st. Inc 1 st in last st. 73 (77-81) sts.

18th row: *P2. K2. Rep from * to last st. P1.

Pat is now in position.

Cont in Chart and Texture pat, noting side incs on following 4th rows until there are 101 (107-111) sts, taking inc sts into pat.

Cont even in Chart and Texture pat until work from beg measures 18½ (19¼-20) ins [47 (49-51) cm], ending with RS facing for next row. Cast off.

Place markers on side edges of Sleeves 6 (8-10) rows down from cast off edge.

FINISHING

Pin garment pieces to measurements and cover with damp cloth leaving to dry.

Buttonhole Band: With RS of work facing, smaller needles and D, beg at lower edge of Right Front Placket opening, pick up and knit 36 sts to neck edge.

1st row: *K1. P1. Rep from * to end of row.

Rep last row 3 times more, thus ending with **WS** facing for next row.

Next row: Rib across 4 sts. *yfwd. Work 2tog. Rib across 7 sts. yfwd. Work 2tog.* Rib across 6 sts. Rep from * to * once more. Rib to end of row.

Next row: *K1. P1. Rep from * to end of row.

Rep last row 4 times more.

With MC, work 1 row in (K1. P1) ribbing.

Cast off in ribbing.

Button Band: Work to correspond to buttonhole band omitting all reference to buttonholes and picking up sts along Left Front Placket opening from neck edge to lower edge.

Collar: Sew shoulder seams. With RS of work facing, D and smaller needles, beg at center of top edge of buttonhole band, pick up and knit 42 (42-44) sts to shoulder. Knit across 35 (37-39) sts from back neck st holder. Pick up and knit 42 (42-44) sts down left front to center of top edge of button band. 119 (121-127) sts.

1st row: (WS). P1. *K1. P1. Rep from * to end of row.

2nd row: (K1. P1) 38 (39-41) times. yb. Sl1. yf. Slip st back onto left hand needle.

Turn.

3rd row: K1. (P1. K1) 17 (18-19) times. yb. Sl1. yf. Slip st back onto left hand needle. **Turn.**

4th row: P1. (K1. P1) 14 (15-16) times. yb. Sl1. yf. Slip st back onto left hand needle. **Turn.**

5th row: K1. (P1. K1) 11 (12-13) times. yb. Sl1. yf. Slip st back onto left hand needle. **Turn.**

6th row: Rib to end of row.

Work a further 4 rows in (K1. P1) ribbing.

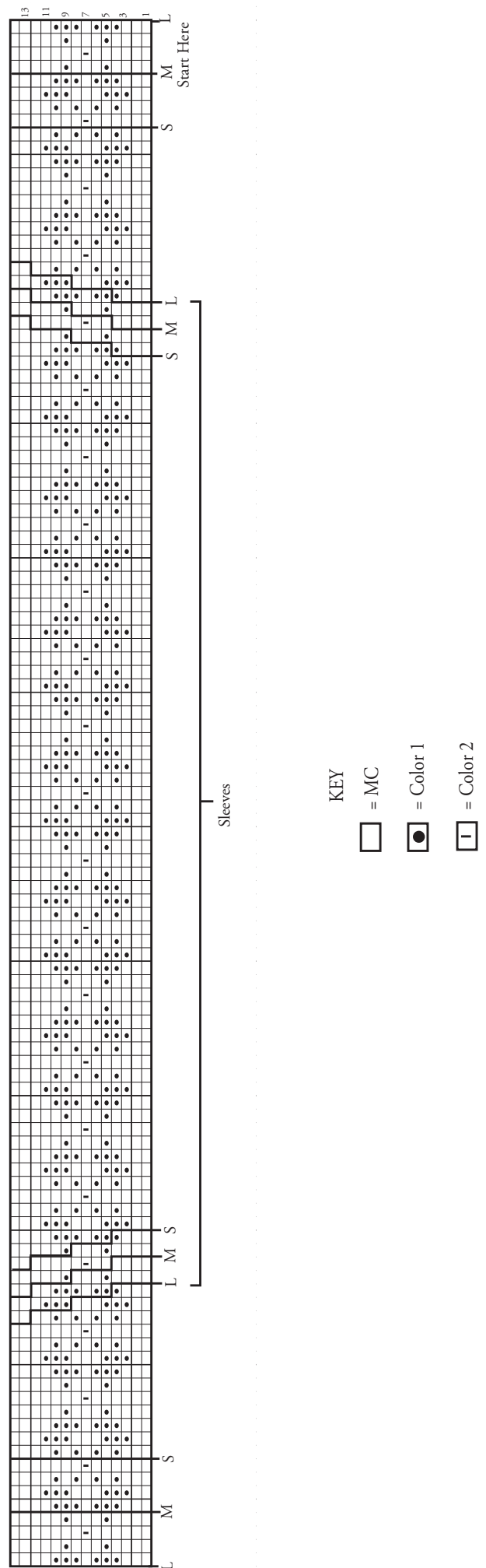
Change to larger needles and cont in (K1. P1) ribbing for a further 18 rows.

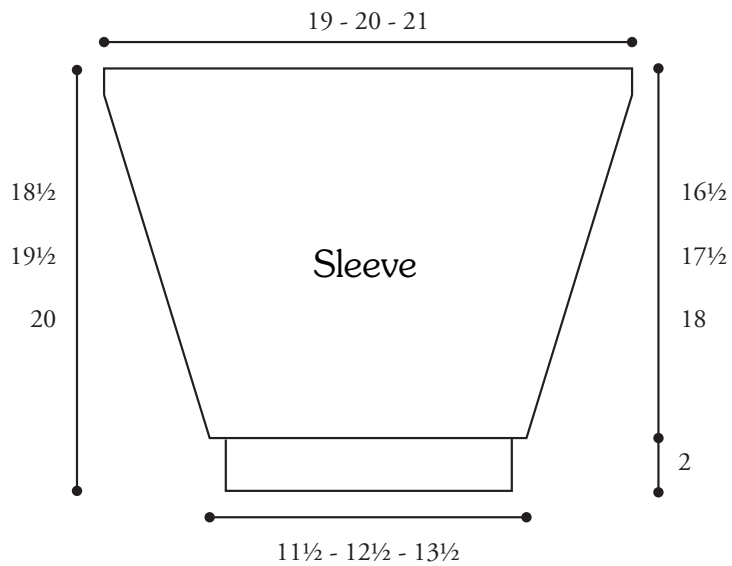
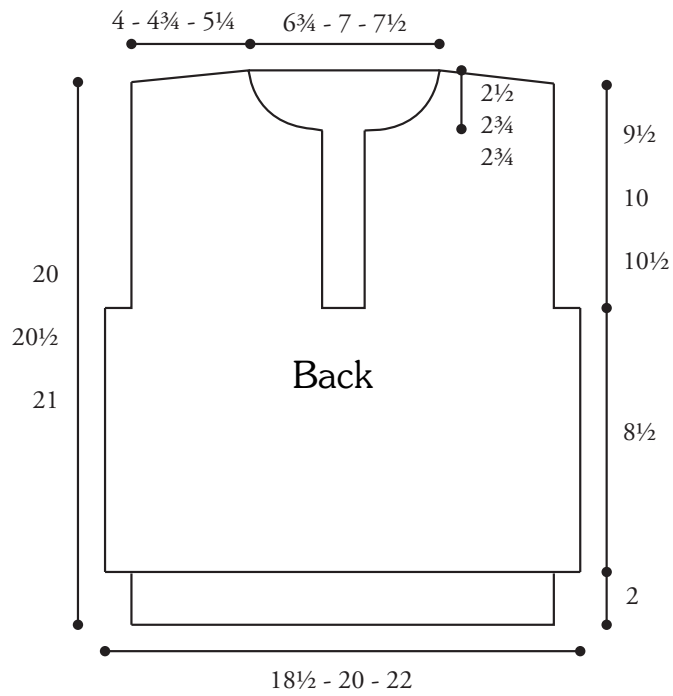
With MC, work 1 row in (K1. P1) ribbing.

Cast off in ribbing.

Sew in Sleeves placing rows above markers along armhole cast off edges to form square armholes. Sew side and sleeve seams. Sew buttons on Placket to correspond to buttonholes.

CHART I





 Patons

... a part of your life.

P.O. Box 40, Listowel ON N4W 3H3